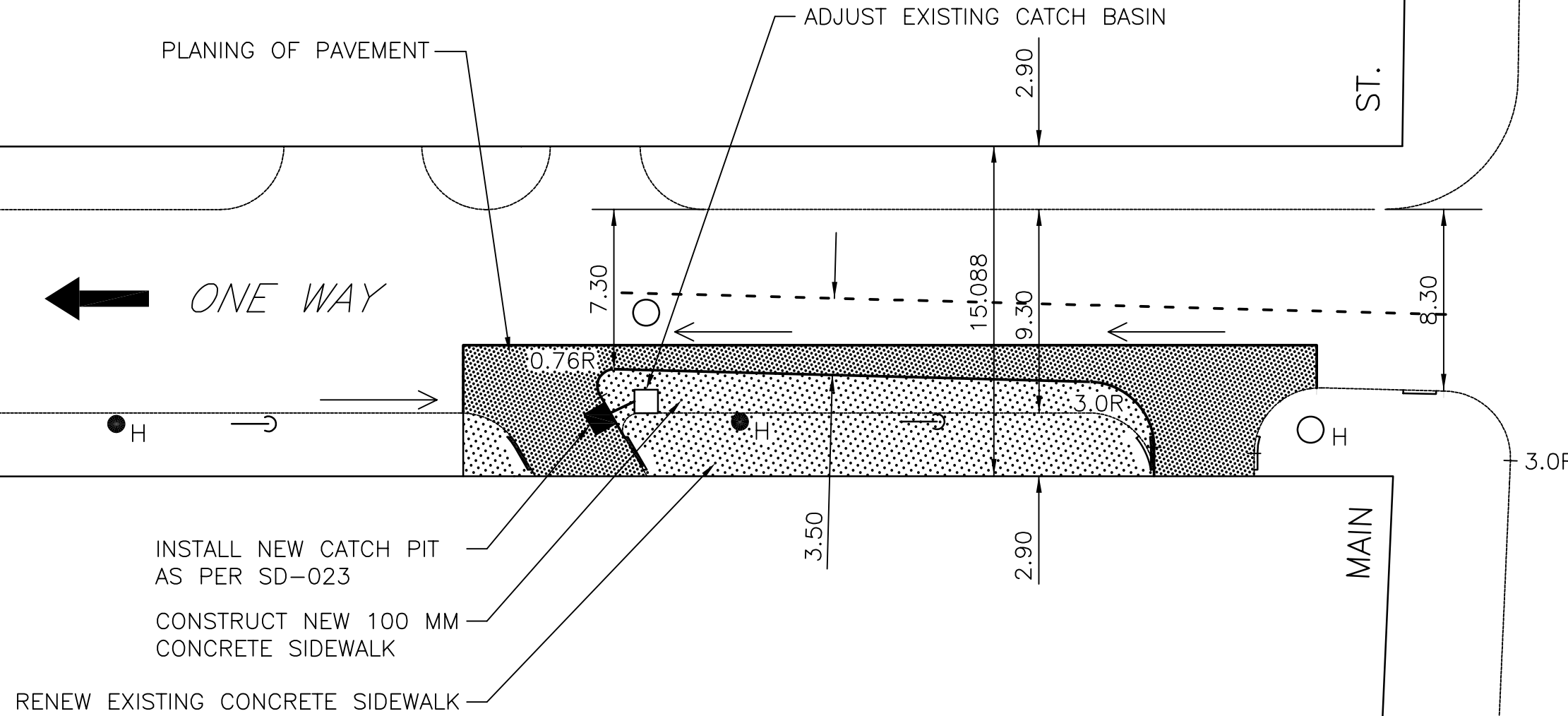
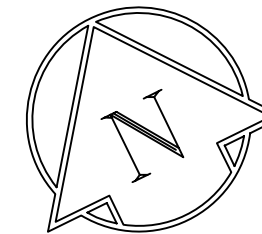


ALEXANDER AVENUE



INSTALL NEW CATCH PIT
AS PER SD-023

CONSTRUCT NEW 100 MM
CONCRETE SIDEWALK

RENEW EXISTING CONCRETE SIDEWALK

- CONSTRUCTION NOTES**
- 1) CURB REPLACEMENT AS DIRECTED BY THE CONTRACT ADMINISTRATOR
 - 2) ALL STREET RADIUS CURB UNDER 15M RADIUS SHALL BE REPLACED AS MODIFIED OR AS DIRECTED BY THE CONTRACT ADMINISTRATOR
 - 3) PAVEMENT REPAIRS SHOWN ARE ONLY A REPRESENTATIVE SAMPLE OF THE TENDERED QUANTITIES
 - 4) ASPHALT TIE-INS TO BE DETERMINED IN THE FIELD BY THE CONTRACT ADMINISTRATOR.
 - 5) SIDEWALK REPLACEMENT AS DIRECTED BY THE CONTRACT ADMINISTRATOR.
 - 6) BOULEVARD REPLACEMENT AS DIRECTED BY THE CONTRACT ADMINISTRATOR.

WARNING

IF POWER EQUIPMENT OR EXPLOSIVES ARE TO BE USED FOR EXCAVATION ON THIS PROJECT THE CONTRACTOR MUST:

- 1) OBTAIN CLEARANCE FROM THE GAS UTILITY PRIOR TO EXCAVATION.
- 2) TAKE PRECAUTION TO AVOID DAMAGE TO GAS UTILITY INSTALLATIONS.

SEE PROVINCIAL REGULATION 210/72 FOR DETAILS

METRIC
WHOLE NUMBERS INDICATE MILLIMETRES
DECIMALIZED NUMBERS INDICATE METRES

BID OPPORTUNITY NO. 491-2007

EXISTING	LEGEND - PLAN	PROPOSED	EXISTING	LEGEND - PLAN	PROPOSED	EXISTING	LEGEND - PROFILE	PROPOSED
150 WM	WATERMAIN	150 WM	HYDRO	150 WM	WATERMAIN	300 LDS	WATERMAIN	300 LDS
+	HYDRANT	+	MTS	+	SEWER	+	SEWER	+
o	VALVE	o	CONCRETE	o		o		o
300 LDS	LAND DRAINAGE SEWER	300 LDS	LIMIT OF ASPHALT	300 LDS		300 LDS		300 LDS
250 CS	COMBINED SEWER	250 CS	CURB RENEWAL	250 CS		250 CS		250 CS
o	MANHOLE	o	ASPHALT	o		o		o
□	CATCH BASIN	□	ELEVATIONS	□	SOUTH/EAST R	□		□
△	CURB INLET	△	PROPERTY LINE	△	NORTH/WEST R	△		△
☆	WOOD POLES	☆	SURVEY BAR	☆	Q PROFILE	☆		☆
o-o	LAMP STANDARD	o-o	CURB STOP	o-o	SOUTH/EAST GUTTER	o-o		o-o
o	GAS	o	RAMP CURB	o	NORTH/WEST GUTTER	o		o

LOCATION APPROVED
UNDERGROUND STRUCTURES

SUPR. U/G STRUCTURES DATE COMMITTEE

NOTE:
LOCATION OF UNDERGROUND STRUCTURES AS SHOWN ARE BASED ON THE BEST INFORMATION AVAILABLE. BUT NO GUARANTEE IS GIVEN THAT ALL EXISTING UTILITIES ARE SHOWN OR THAT THE GIVEN LOCATIONS ARE EXACT. CONFIRMATION OF EXISTENCE AND EXACT LOCATION OF ALL SERVICES MUST BE OBTAINED FROM THE INDIVIDUAL UTILITIES BEFORE PROCEEDING WITH CONSTRUCTION.

NO.	REVISIONS	DATE	BY

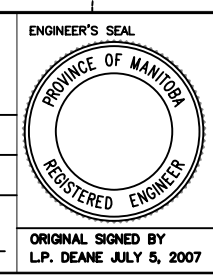
TRANSPORTATION ENGINEERING DIVISION
TECHNOLOGY SERVICES BRANCH
106 - 1155 PACIFIC AVE

DESIGNED BY G.C.
CHECKED BY D.K.

DRAWN BY R.W. / G.C.
APPROVED BY K.T.

SCALE: 1 : 250

DATE 2007/05/11



THE CITY OF WINNIPEG
PUBLIC WORKS DEPARTMENT

ALEXANDER AVENUE
FROM KING STREET TO MAIN STREET
ROADWAY IMPROVEMENTS

CITY DRAWING NUMBER SE-07-35
SHEET 2 OF 2

2