

# ALEXANDER AVENUE

ST.

ST.

PLANING OF PAVEMENT

5.0 7.69

7.00

15.087

2.90

9.30

2.90

← ONE WAY

EXISTING ASPHALT

8.0R

6.0R

PRINCESS

CONSTRUCT NEW 100 MM CONCRETE SIDEWALK

REMOVE INTERLOCKING PAVING STONE SIDEWALK. INSTALL CONCRETE SIDEWALK

PUBLIC LANE

ADJUST CURB INLET

KING

2.59

### WARNING

IF POWER EQUIPMENT OR EXPLOSIVES ARE TO BE USED FOR EXCAVATION ON THIS PROJECT THE CONTRACTOR MUST:  
 1) OBTAIN CLEARANCE FROM THE GAS UTILITY PRIOR TO EXCAVATION.  
 2) TAKE PRECAUTION TO AVOID DAMAGE TO GAS UTILITY INSTALLATIONS.  
 SEE PROVINCIAL REGULATION 210/72 FOR DETAILS

### CONSTRUCTION NOTES

- 1) CURB REPLACEMENT AS DIRECTED BY THE CONTRACT ADMINISTRATOR
- 2) ALL STREET RADIUS CURB UNDER 15M RADIUS SHALL BE REPLACED AS MODIFIED OR AS DIRECTED BY THE CONTRACT ADMINISTRATOR
- 3) PAVEMENT REPAIRS SHOWN ARE ONLY A REPRESENTATIVE SAMPLE OF THE TENDERED QUANTITIES
- 4) ASPHALT TIE-INS TO BE DETERMINED IN THE FIELD BY THE CONTRACT ADMINISTRATOR.
- 5) SIDEWALK REPLACEMENT AS DIRECTED BY THE CONTRACT ADMINISTRATOR.
- 6) BOULEVARD REPLACEMENT AS DIRECTED BY THE CONTRACT ADMINISTRATOR.

METRIC  
 WHOLE NUMBERS INDICATE MILLIMETRES  
 DECIMALIZED NUMBERS INDICATE METRES

BID OPPORTUNITY NO. 491-2007

150 WM	WATERMAIN	150 WM	HYDRO	150 WM	WATERMAIN	150 WM	WATERMAIN
300 LDS	LAND DRAINAGE SEWER	300 LDS	CONCRETE	300 LDS	SEWER	300 LDS	SEWER
250 CS	COMBINED SEWER	250 CS	LIMIT OF ASPHALT				
○	MANHOLE		CURB RENEWAL				
□	CATCH BASIN	± 31.000	ASPHALT				
△	CURB INLET		ELEVATIONS	[31.000]			
☆	WOOD POLES		PROPERTY LINE				
○	LAMP STANDARD		SURVEY BAR				
○	GAS		CURB STOP				
			RAMP CURB				
EXISTING	LEGEND - PLAN	PROPOSED	EXISTING	LEGEND - PLAN	PROPOSED	EXISTING	LEGEND - PROFILE

LOCATION APPROVED  
 UNDERGROUND STRUCTURES

SUPR. U/G STRUCTURES DATE COMMITTEE

NOTE:  
 LOCATION OF UNDERGROUND STRUCTURES AS SHOWN ARE BASED ON THE BEST INFORMATION AVAILABLE. BUT NO GUARANTEE IS GIVEN THAT ALL EXISTING UTILITIES ARE SHOWN OR THAT THE GIVEN LOCATIONS ARE EXACT. CONFIRMATION OF EXISTENCE AND EXACT LOCATION OF ALL SERVICES MUST BE OBTAINED FROM THE INDIVIDUAL UTILITIES BEFORE PROCEEDING WITH CONSTRUCTION.

NO.	REVISIONS	DATE	BY

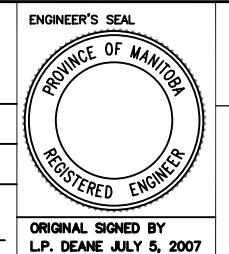
TRANSPORTATION ENGINEERING DIVISION  
 TECHNOLOGY SERVICES BRANCH  
 106 - 1155 PACIFIC AVE

DESIGNED BY G.C.  
 CHECKED BY D.K.

DRAWN BY R.W. / G.C.  
 APPROVED BY K.T.

SCALE: 1 : 250

DATE 2007/05/11



THE CITY OF WINNIPEG  
 PUBLIC WORKS DEPARTMENT

ALEXANDER AVENUE  
 FROM PRINCESS STREET TO KING STREET  
 ROADWAY IMPROVEMENTS

CITY DRAWING NUMBER SE-07-34  
 SHEET 1 OF 2

1