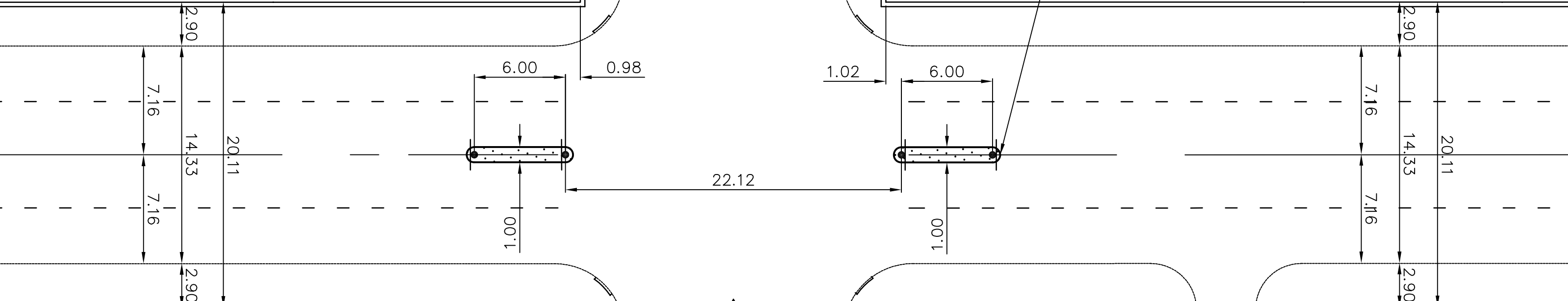


ADELAIDE STREET

BANNATYNE AVE

CONSTRUCT MONOLITHIC CONCRETE MEDIAN SLAB AS PER SD-226A (TYP)



ONE WAY

- CONSTRUCTION NOTES**
- 1) CURB REPLACEMENT AS DIRECTED BY THE CONTRACT ADMINISTRATOR
 - 2) ALL STREET RADIUS CURB UNDER 15M RADIUS SHALL BE REPLACED AS MODIFIED OR AS DIRECTED BY THE CONTRACT ADMINISTRATOR
 - 3) PAVEMENT REPAIRS SHOWN ARE ONLY A REPRESENTATIVE SAMPLE OF THE TENDERED QUANTITIES
 - 4) ASPHALT TIE-INS TO BE DETERMINED IN THE FIELD BY THE CONTRACT ADMINISTRATOR.
 - 5) SIDEWALK REPLACEMENT AS DIRECTED BY THE CONTRACT ADMINISTRATOR.
 - 6) BOULEVARD REPLACEMENT AS DIRECTED BY THE CONTRACT ADMINISTRATOR.

WARNING

IF POWER EQUIPMENT OR EXPLOSIVES ARE TO BE USED FOR EXCAVATION ON THIS PROJECT THE CONTRACTOR MUST:

- 1) OBTAIN CLEARANCE FROM THE GAS UTILITY PRIOR TO EXCAVATION.
- 2) TAKE PRECAUTION TO AVOID DAMAGE TO GAS UTILITY INSTALLATIONS.

SEE PROVINCIAL REGULATION 210/72 FOR DETAILS

METRIC
WHOLE NUMBERS INDICATE MILLIMETRES
DECIMALIZED NUMBERS INDICATE METRES

BID OPPORTUNITY NO. 491-2007

| | | | | | | | | | |
|----------|---------------------|----------|------------------|---------------|-----------|----------|------------------|----------|-----------|
| 150 WM | WATERMAIN | 150 WM | HYDRO | 150 WM | WATERMAIN | 150 WM | WATERMAIN | 150 WM | WATERMAIN |
| 300 LDS | LAND DRAINAGE SEWER | 300 LDS | CONCRETE | 300 LDS | SEWER | 300 LDS | SEWER | 300 LDS | SEWER |
| 250 CS | COMBINED SEWER | 250 CS | LIMIT OF ASPHALT | 250 CS | SEWER | 250 CS | SEWER | 250 CS | SEWER |
| ○ | MANHOLE | ○ | CURB RENEWAL | ○ | SEWER | ○ | SEWER | ○ | SEWER |
| □ | CATCH BASIN | □ | ASPHALT | □ | SEWER | □ | SEWER | □ | SEWER |
| △ | CURB INLET | △ | ELEVATIONS | △ | SEWER | △ | SEWER | △ | SEWER |
| ☆ | WOOD POLES | ☆ | PROPERTY LINE | ☆ | SEWER | ☆ | SEWER | ☆ | SEWER |
| ○ | LAMP STANDARD | ○ | SURVEY BAR | ○ | SEWER | ○ | SEWER | ○ | SEWER |
| ○ | GAS | ○ | CURB STOP | ○ | SEWER | ○ | SEWER | ○ | SEWER |
| ○ | GAS | ○ | RAMP CURB | ○ | SEWER | ○ | SEWER | ○ | SEWER |
| EXISTING | LEGEND - PLAN | PROPOSED | EXISTING | LEGEND - PLAN | PROPOSED | EXISTING | LEGEND - PROFILE | PROPOSED | EXISTING |

LOCATION APPROVED
UNDERGROUND STRUCTURES

SUPR. U/G STRUCTURES DATE COMMITTEE

NOTE:
LOCATION OF UNDERGROUND STRUCTURES AS SHOWN ARE BASED ON THE BEST INFORMATION AVAILABLE. BUT NO GUARANTEE IS GIVEN THAT ALL EXISTING UTILITIES ARE SHOWN OR THAT THE GIVEN LOCATIONS ARE EXACT. CONFIRMATION OF EXISTENCE AND EXACT LOCATION OF ALL SERVICES MUST BE OBTAINED FROM THE INDIVIDUAL UTILITIES BEFORE PROCEEDING WITH CONSTRUCTION.

| | | | |
|-----|-----------|------|----|
| NO. | REVISIONS | DATE | BY |
| | | | |
| | | | |

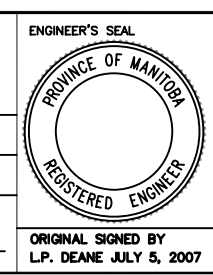
TRANSPORTATION ENGINEERING DIVISION
TECHNOLOGY SERVICES BRANCH
106 - 1155 PACIFIC AVE

DESIGNED BY: D.B.T. / G.C. CHECKED BY: G.C.

DRAWN BY: D.B.T. / G.C. APPROVED BY: D.K.

SCALE: 1 : 250

DATE: 2007/05/11



THE CITY OF WINNIPEG
PUBLIC WORKS DEPARTMENT

Winnipeg

ADELAIDE STREET AND BANNATYNE AVENUE

INTERSECTION ROADWAY IMPROVEMENTS

CITY DRAWING NUMBER: SE-07-33
SHEET 1 OF 1

1