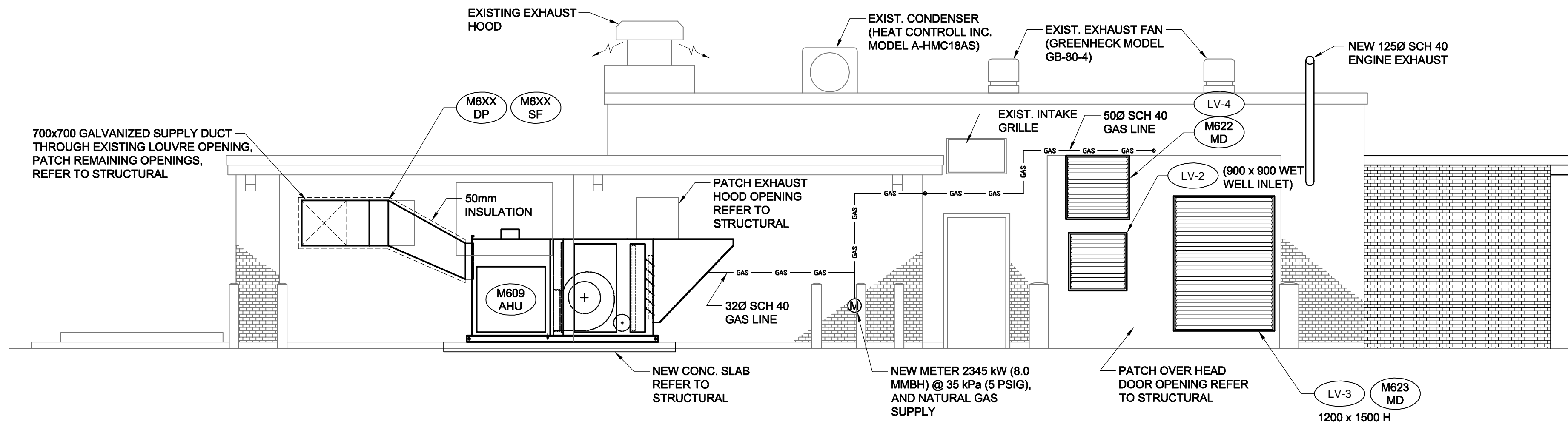


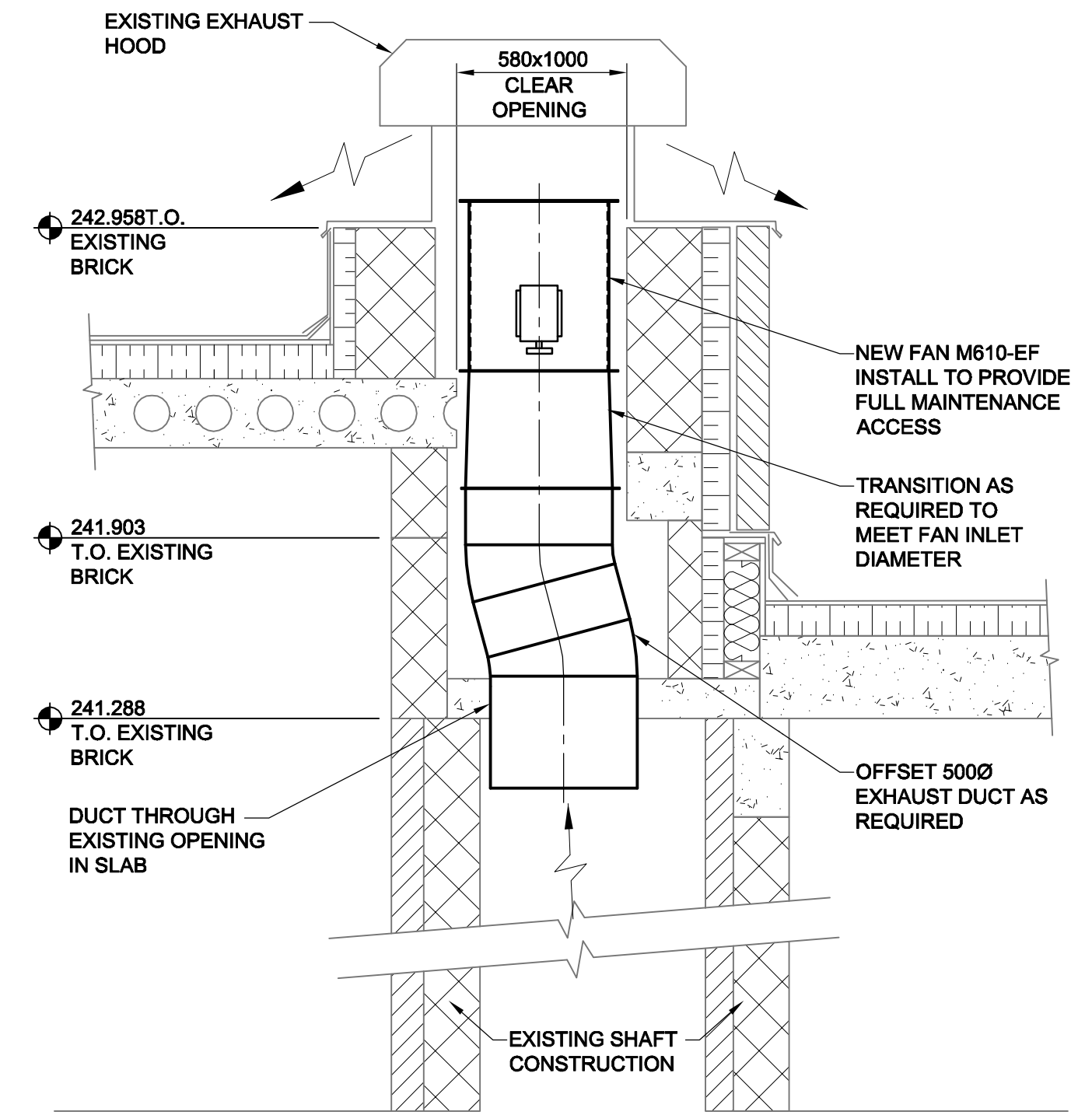
D SIZE 22" x 34" (559mm x 864mm)

PLOT: 18/12/2007 10:34:56 AM

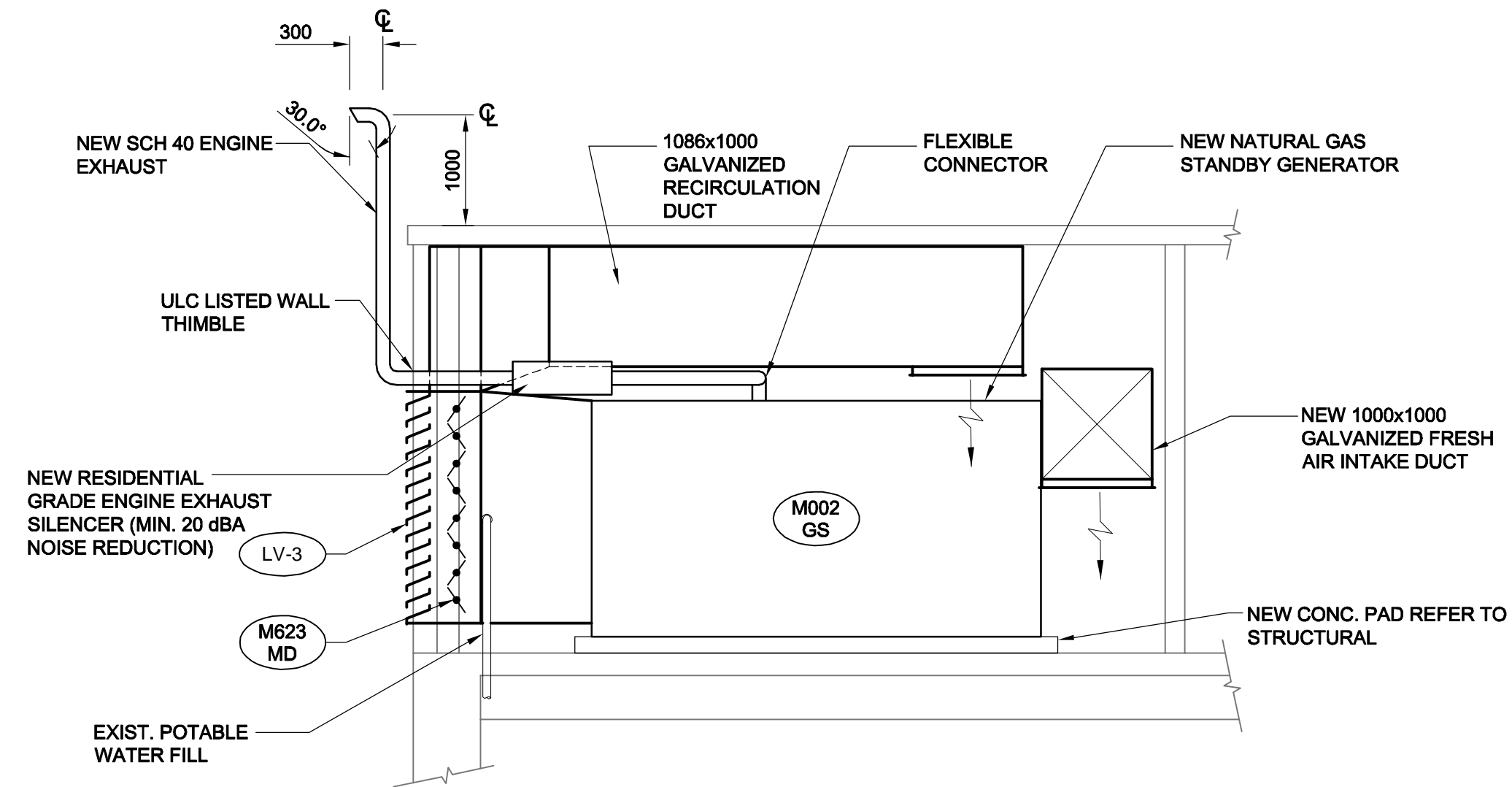
UMA FILE NAME: D265-202-02_01-M-0012_RX.dwg Saved By: [redacted]



WEST ELEVATION B
M0010
SCALE 1:50
NEW AIR HANDLING UNIT AH-1



SECTION C
M0010
SCALE 1:20
SECTION AT EXISTING EXHAUST HOOD
ALL DUCTING 304 SS



SECTION D
M0010
SCALE 1:50
NEW STANDBY GENERATOR GS-1

DRAWING NOTES

- USE LONG SWEEP ELBOWS
- PROVIDE CEILING HUNG SUPPORTS FOR EXHAUST PIPING.
- APPLY 38mm MINERAL WOOL, RIGID TYPE INSULATION RATED 649°C TO ALL INSIDE PIPING AND SILENCERS.
- APPLY STAINLESS STEEL JACKETING WITH LAPPED JOINTS.
- PROVIDE SHOP DRAWINGS FOR PROPOSED EXHAUST SYSTEM, IDENTIFYING ALL SUPPORTS AND EXPANSION JOINTS AS REQUIRED.
- EXTERIOR PIPING TO BE COATED WITH MIN. 405°C RATED INORGANIC ZINK PRIMER WITH SILOXANE TOPCOAT, ALUMINUM COLOUR.

APEGM
Certificate of Authorization
UMA Engineering Ltd. (MB)
No. 256 Date: 07/12/14

RS	ALS	CC	CC	BP
DRN	CHK	DES	ENG	IDR
UMA REVIEW				

B.M. ELEV.	FIELD BOOK #:	UMA AECOM		ENGINEER'S SEAL
POSTED TO LBIS		DESIGNED BY: CAC	CHECKED BY: -----	ISSUE / REVISION ISSUED FOR BID WAS SEALED BY CLAUDE COURCHAINE AND DATED 07/12/14
		DRAWN BY: RJP	APPROVED BY: -	
D ISSUED FOR BID	07/12/14	RS		
C ISSUED FOR 100% REVIEW	07/11/09	RS		
B ISSUED FOR ZONING	07/08/21	ALS		
A ISSUED FOR 80% REVIEW	07/06/18	RJP		
NO. REVISIONS	DATE	BY	FILENAME: D265-202-02_01-M-0012_RX.dwg	

THE CITY OF WINNIPEG
WATER AND WASTE DEPARTMENT

PERIMETER ROAD PUMPING STATION UPGRADES
Contract B - Building Upgrades

Mechanical - New Construction
ELEVATIONS, SECTIONS AND DETAILS

CITY DRAWING NUMBER: 1-01111L-M0012
SHEET: 001
REV: D
SIZE: D