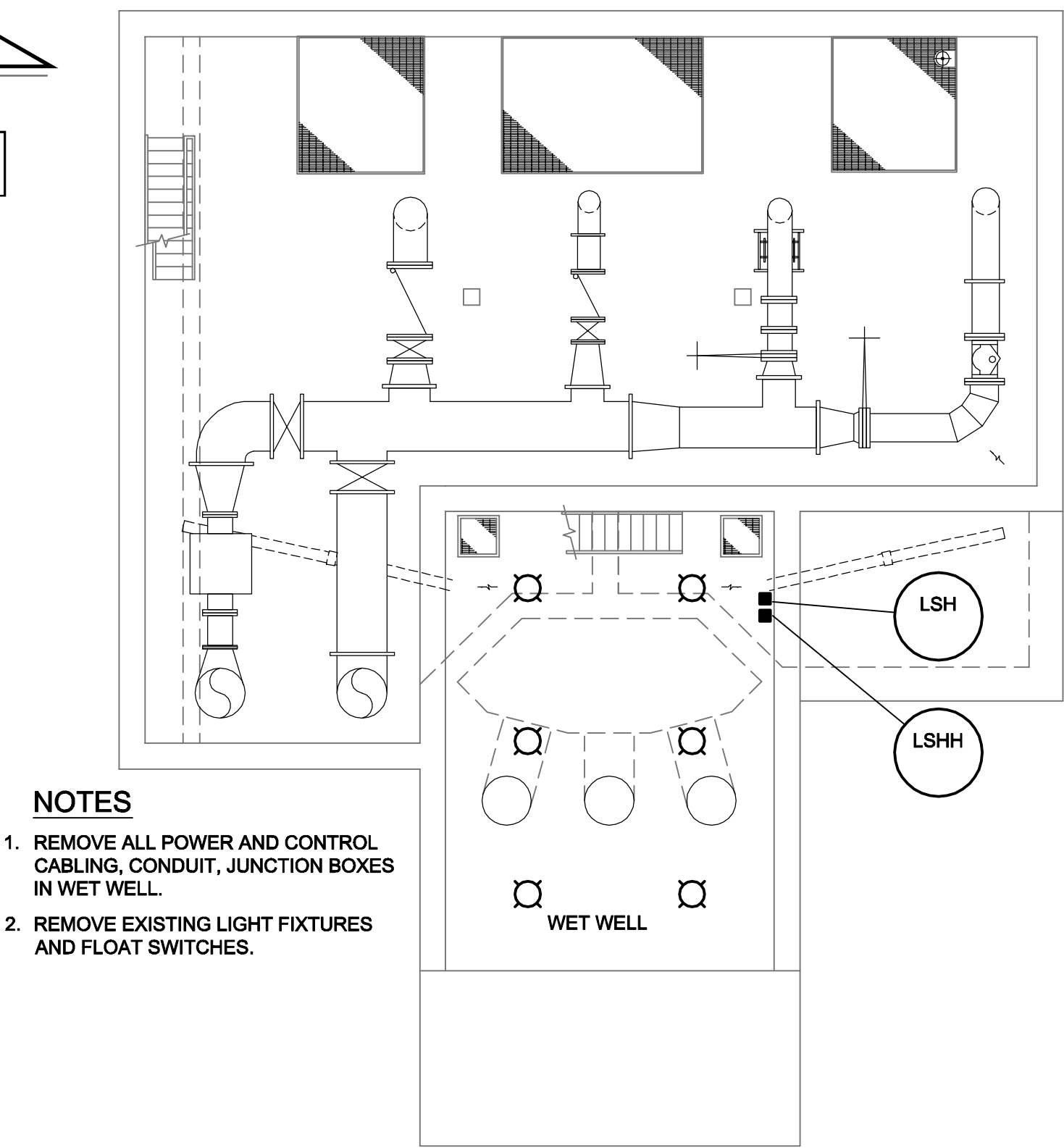
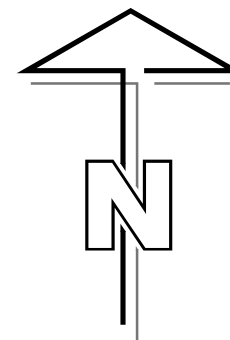


D SIZE 22" x 34" 659mm x 864mm

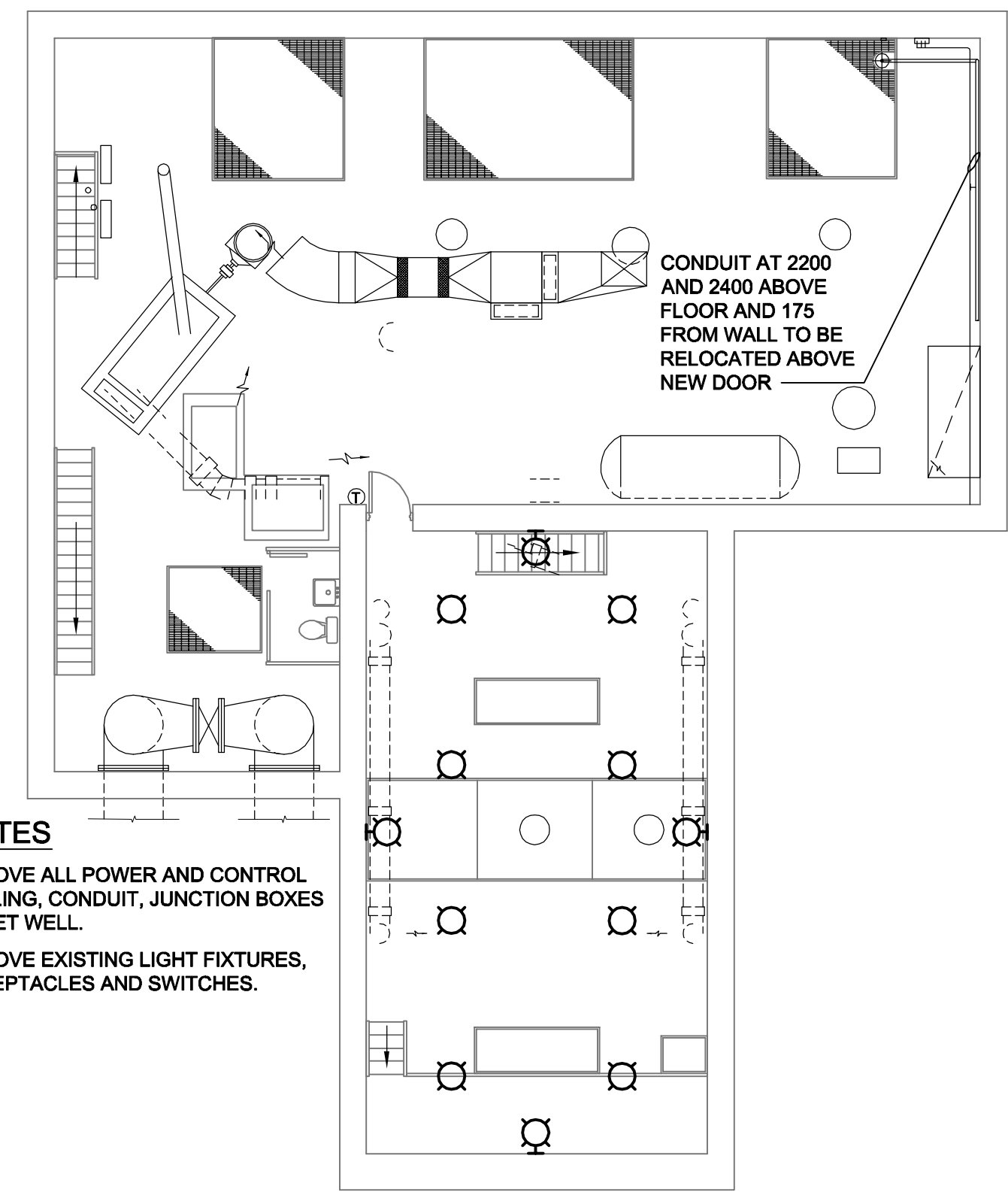
PLOT: 07/12/18 8:28:07 AM

UMA FILE NAME: D265-202-02_00-E-0006_RX.dwg Saved By: djl



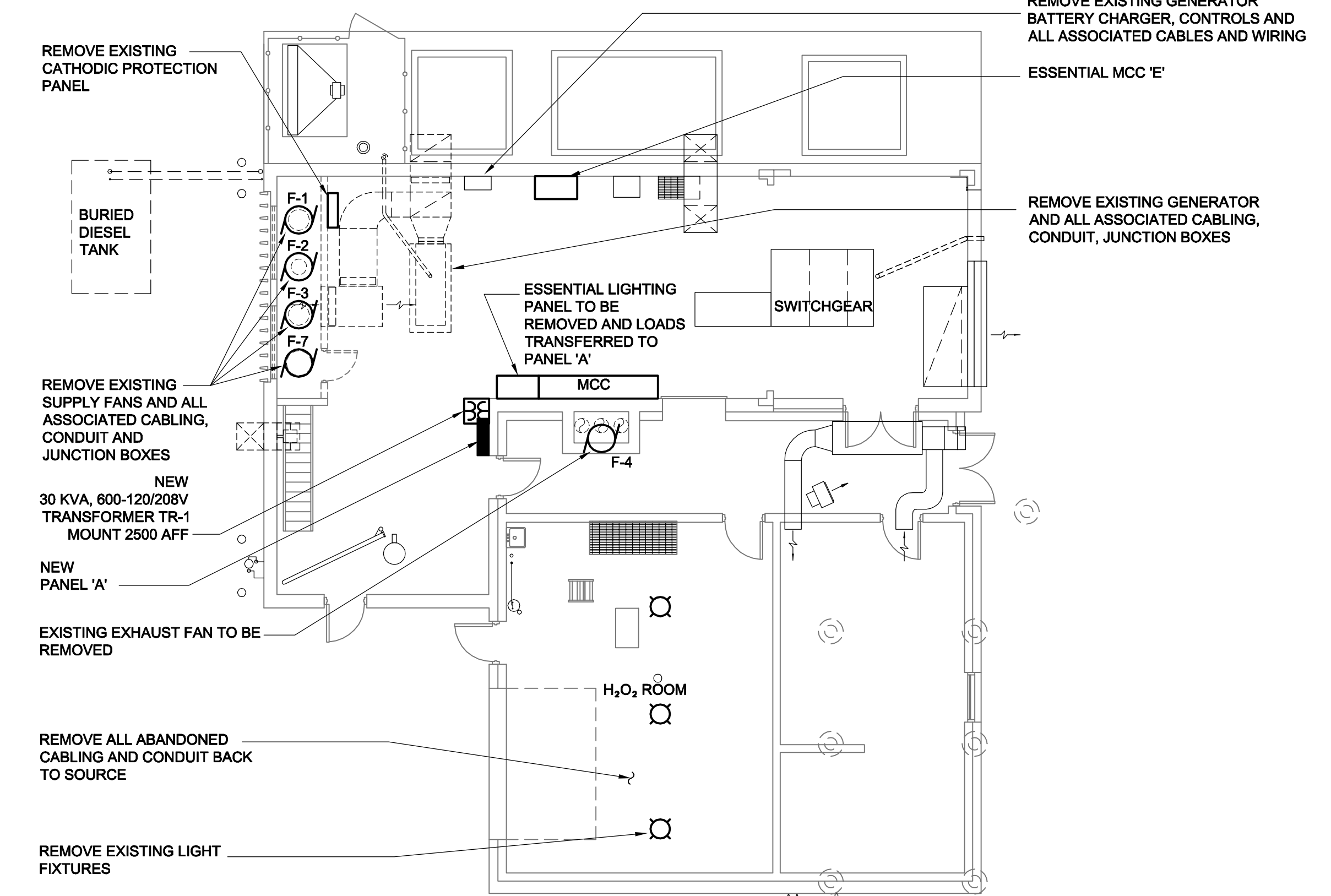
- NOTES**
1. REMOVE ALL POWER AND CONTROL CABLING, CONDUIT, JUNCTION BOXES IN WET WELL.
 2. REMOVE EXISTING LIGHT FIXTURES AND FLOAT SWITCHES.

PLAN LEVEL 200 ①
SCALE 1:100



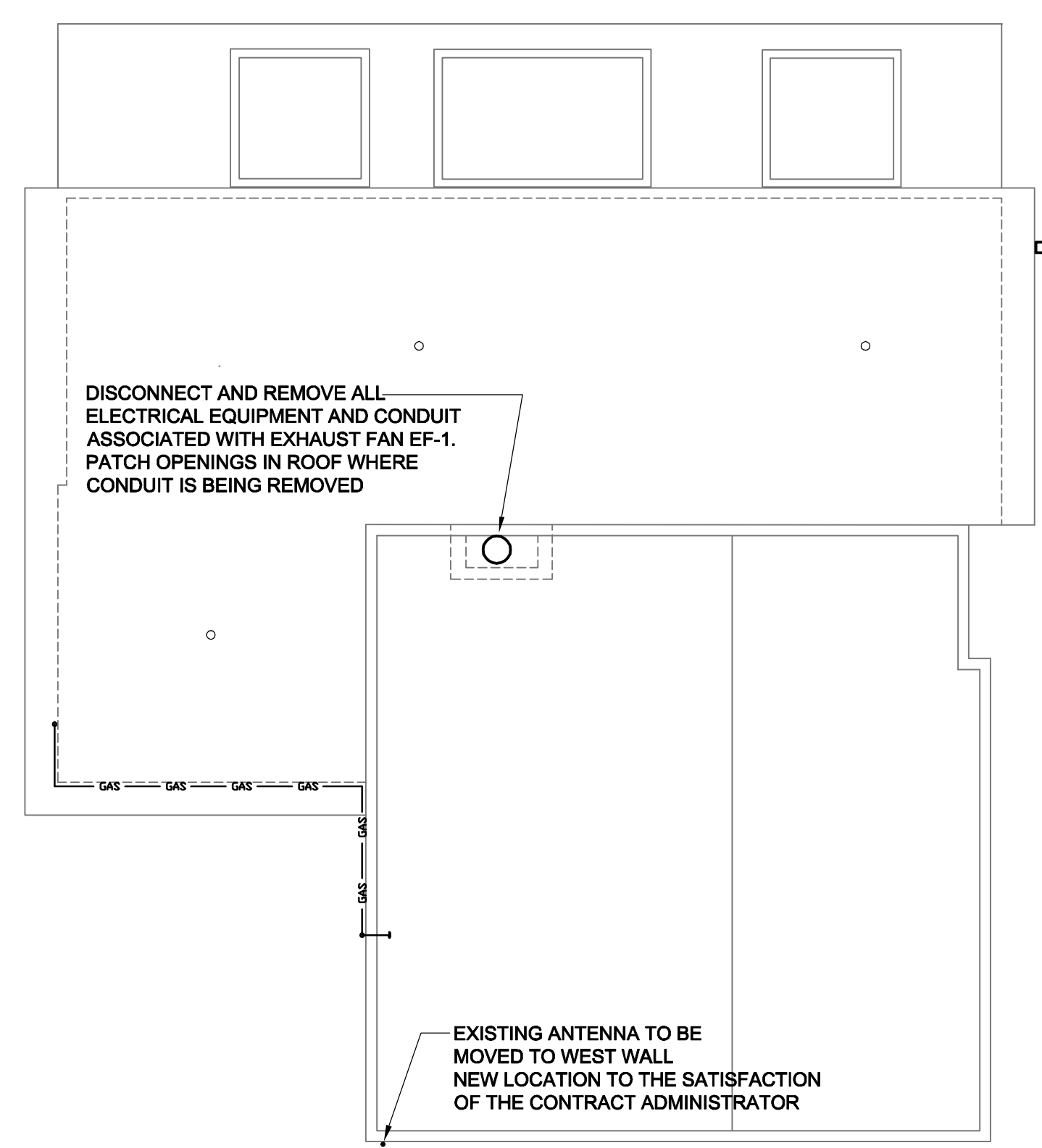
- NOTES**
1. REMOVE ALL POWER AND CONTROL CABLING, CONDUIT, JUNCTION BOXES IN WET WELL.
 2. REMOVE EXISTING LIGHT FIXTURES, RECEPTACLES AND SWITCHES.

PLAN LEVEL 300 ②
SCALE 1:100



- REMOVE EXISTING CATHODIC PROTECTION PANEL
- REMOVE EXISTING GENERATOR BATTERY CHARGER, CONTROLS AND ALL ASSOCIATED CABLES AND WIRING
- ESSENTIAL MCC 'E'
- REMOVE EXISTING GENERATOR AND ALL ASSOCIATED CABLING, CONDUIT, JUNCTION BOXES
- ESSENTIAL LIGHTING PANEL TO BE REMOVED AND LOADS TRANSFERRED TO PANEL 'A'
- SWITCHGEAR
- REMOVE EXISTING SUPPLY FANS AND ALL ASSOCIATED CABLING, CONDUIT AND JUNCTION BOXES
- NEW 30 KVA, 600-120/208V TRANSFORMER TR-1 MOUNT 2500 AFF
- NEW PANEL 'A'
- EXISTING EXHAUST FAN TO BE REMOVED
- REMOVE ALL ABANDONED CABLING AND CONDUIT BACK TO SOURCE
- REMOVE EXISTING LIGHT FIXTURES
- H₂O₂ ROOM

PLAN LEVEL 400 ③
SCALE 1:100



DISCONNECT AND REMOVE ALL ELECTRICAL EQUIPMENT AND CONDUIT ASSOCIATED WITH EXHAUST FAN EF-1. PATCH OPENINGS IN ROOF WHERE CONDUIT IS BEING REMOVED

EXISTING CAMERA TO BE RELOCATED ONTO NEW STAIRWELL. NEW LOCATION TO THE SATISFACTION OF CONTRACT ADMINISTRATOR

EXISTING ANTENNA TO BE MOVED TO WEST WALL. NEW LOCATION TO THE SATISFACTION OF THE CONTRACT ADMINISTRATOR

ROOF PLAN ④
SCALE 1:100

IMPORTANT: ASBESTOS NOTIFICATION AND ACKNOWLEDGMENT

Every effort has been made to identify known asbestos containing materials within the areas of the proposed work and where in direct conflict or where posing a hazard, to remove it by proper controlled means before construction. As a precautionary measure, where material is encountered by trades and contractors that is suspect or suspicious, the Trade/Contractor/Subcontractor is to contact the Water And Waste Department who will have samples taken and tested to confirm its composition.

Mo. Reg. 53-88 (Workplace Health Hazard Regulation), Mo. Reg. 100-86R (Fibrosis and Silicosis Regulation) and associated Guidelines apply to all maintenance and renovation work that may disturb asbestos or suspect asbestos-containing materials in the Workplace. Such regulations and guidelines state that any disturbance of asbestos-containing materials may only be performed by workers or by an outside contractor who have first received the required training in asbestos-related precautions.

WORKING WITH ASBESTOS CAN BE DANGEROUS. INHALING ASBESTOS FIBERS CAN CAUSE VARIOUS TYPES OF LUNG DISEASE INCLUDING CANCER. SMOKING INCREASES THE RISK OF LUNG CANCER FROM ASBESTOS EXPOSURE.

ACKNOWLEDGMENT:

In undertaking the work of this project, we the trade or contractor agree to perform our work in such a manner so as NOT to disturb any asbestos-containing materials without:

1. giving notice to the appropriate supervisor, individual manager and/or project coordinator at the Water And Waste Department that known or suspected asbestos-containing material(s) will be needed to be disturbed, or
2. halting work and giving notice to the appropriate individual manager and/or project coordinator at the Water And Waste Department when unforeseen suspected asbestos-containing materials are uncovered during the provisions of services/materials.

APECM
Certificate of Authorization
UMA Engineering Ltd. (MB)
No. 256 Date: 07/12/14

QL	RS	BM	BM	BF
DRN	CHK	DES	ENG	IDR
UMA REVIEW				

B.M. ELEV.	FIELD BOOK #:	UMA AECOM	
POSTED TO LBIS		© 2009 UMA ENGINEERING LTD. ALL RIGHTS RESERVED.	
		DESIGNED BY BM	CHECKED BY -----
		DRAWN BY SCK	APPROVED BY -
D ISSUED FOR BID	07/12/14	LJV	
C ISSUED FOR 100% REVIEW	07/11/09	SCK	
B ISSUED FOR ZONING	07/08/21	SCK	
A ISSUED FOR 80% REVIEW	07/06/18	SCK	
NO. REVISIONS	DATE	BY	FILENAME: D265-202-02_00-E-0006_RX.dwg

ENGINEER'S SEAL
ISSUE / REVISION D
ISSUED FOR BID
WAS SEALED BY
B.L. MOORE
AND DATED
07/12/14

THE CITY OF WINNIPEG
WATER AND WASTE DEPARTMENT
Winnipeg

PERIMETER ROAD PUMPING STATION UPGRADES
Contract B - Building Upgrades

Electrical - Demolition
LEVEL 200, 300, 400 & ROOF

CITY DRAWING NUMBER	SHEET	REV.	SIZE
1-0111L-E0005	001	D	D