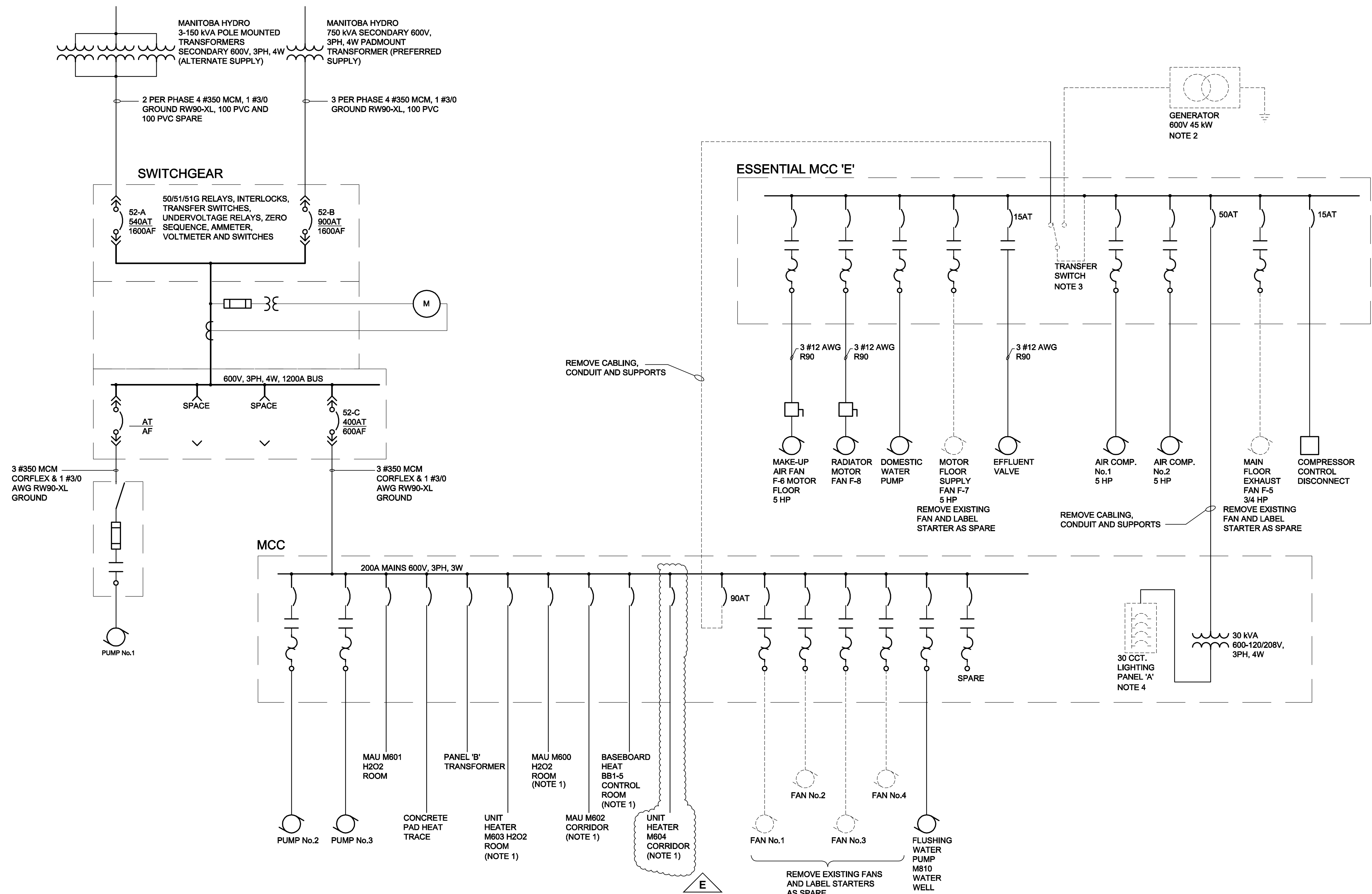


SIZE: 22" X 34" (559mm X 859mm)

PLOT: 08/01/24 10:55:51 AM

UMA FILE NAME: D265-202-02\_00-E-0005\_RX.dwg Saved By: djf



- NOTES**
- EXISTING EQUIPMENT TO BE RE-FED FROM ESSENTIAL MCC 'E'. REMOVE POWER AND CONTROL CABLING AND CONDUIT FROM MCC TO EQUIPMENT. LABEL BREAKER AS SPARE.
  - REMOVE GENERATOR AND ALL ASSOCIATED CABLING, CONDUIT AND JUNCTION BOXES.
  - REMOVE TRANSFER SWITCH AND PROVIDE NEW BLANK DOOR FOR MCC 'E'.
  - LIGHTING PANEL TO BE ABANDONED. RELOCATE ALL CIRCUITS TO NEW PANEL 'A'. REMOVE CABLE AND CONDUITS TO CLOSEST JUNCTION BOX AND EXTEND CABLING AND CONDUIT TO NEW PANEL. PROVIDE ALL NEW CIRCUIT BREAKERS AS REQUIRED.
  - CONTRACTOR TO MARK CIRCUIT BREAKER AND STARTER RATING OF ALL EQUIPMENT LEFT AS SPARE ON AS-BUILT DRAWINGS.

**LEGEND**  
 ----- EQUIPMENT/WIRES TO BE REMOVED

**SINGLE LINE DIAGRAM (EXISTING)**  
 SCALE: N.T.S.

**APEGM**  
 Certificate of Authorization  
 UMA Engineering Ltd. (MB)  
 No. 256 Date: 07/12/14

QL	RS	LK	BM	SS
DRN	CHK	DES	ENG	IDR
UMA REVIEW				

B.M. ELEV.	FIELD BOOK #:	UMA   AECOM	
POSTED TO LBIS		DESIGNED BY: BLM	CHECKED BY: -----
		DRAWN BY: SK	APPROVED BY: --
<b>E</b> ISSUED FOR ADDENDUM 3	08/01/23	QL	
<b>D</b> ISSUED FOR BID	07/12/14	LJV	
<b>C</b> ISSUED FOR 100% REVIEW	07/11/09	SCK	
<b>B</b> ISSUED FOR ZONING	07/08/21	SCK	
<b>A</b> ISSUED FOR 80% REVIEW	07/06/18	SCK	
NO. REVISIONS	DATE	BY	FILENAME: D265-202-02_00-E-0005_RX.dwg

ENGINEER'S SEAL  
 ISSUE / REVISION D  
 ISSUED FOR BID  
 WAS SEALED BY  
 B.L. MOORE  
 AND DATED  
 07/12/14



**PERIMETER ROAD PUMPING STATION UPGRADES**  
 Contract B - Building Upgrades

Electrical  
 SINGLE LINE DIAGRAM - DEMOLITION

CITY DRAWING NUMBER	SHEET	REV.	SIZE
1-0111L-E0004	001	E	D