

FILE NAME:

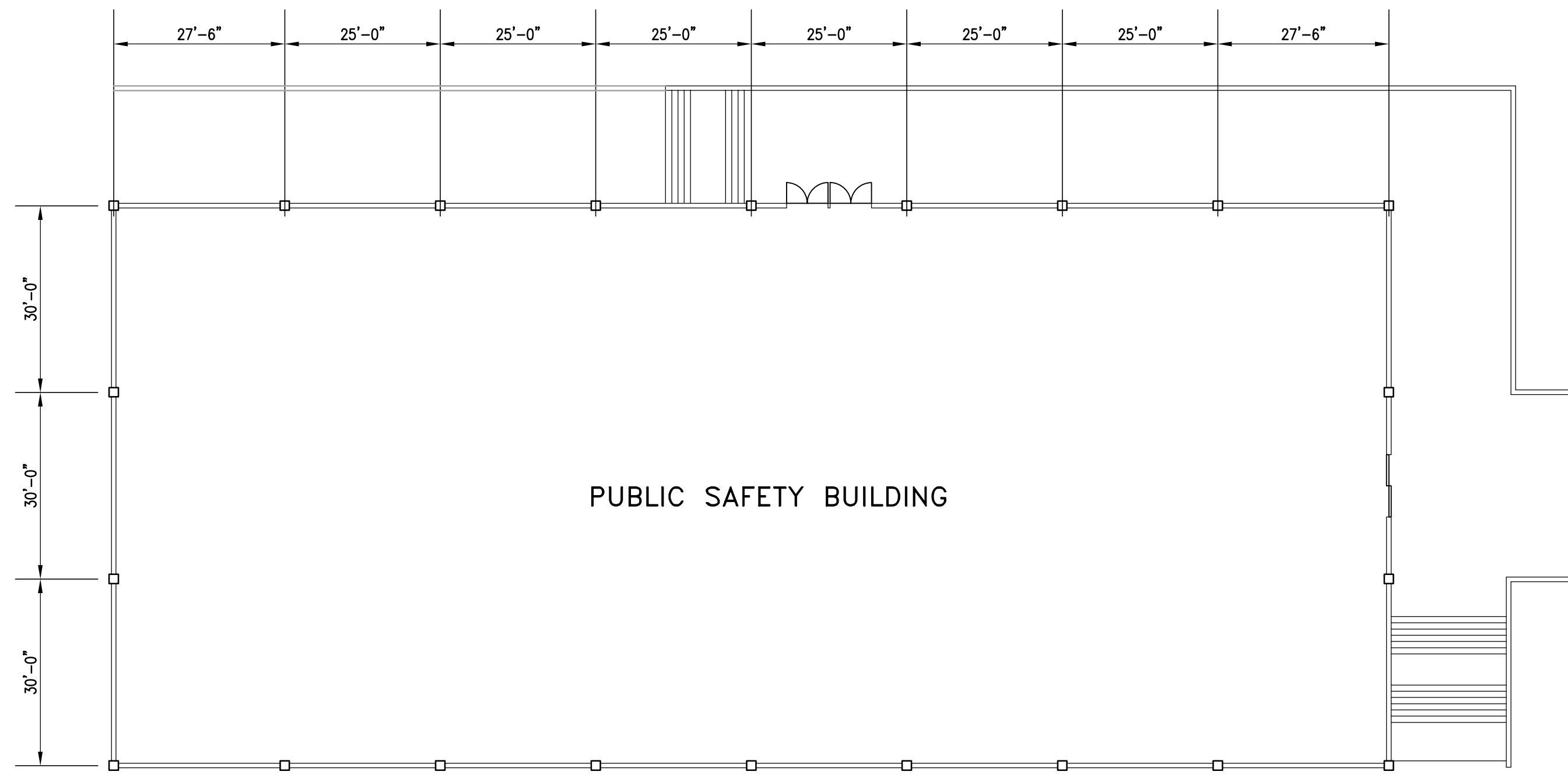
DATE:

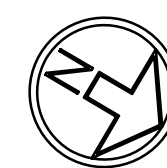
DESCRIPTION:

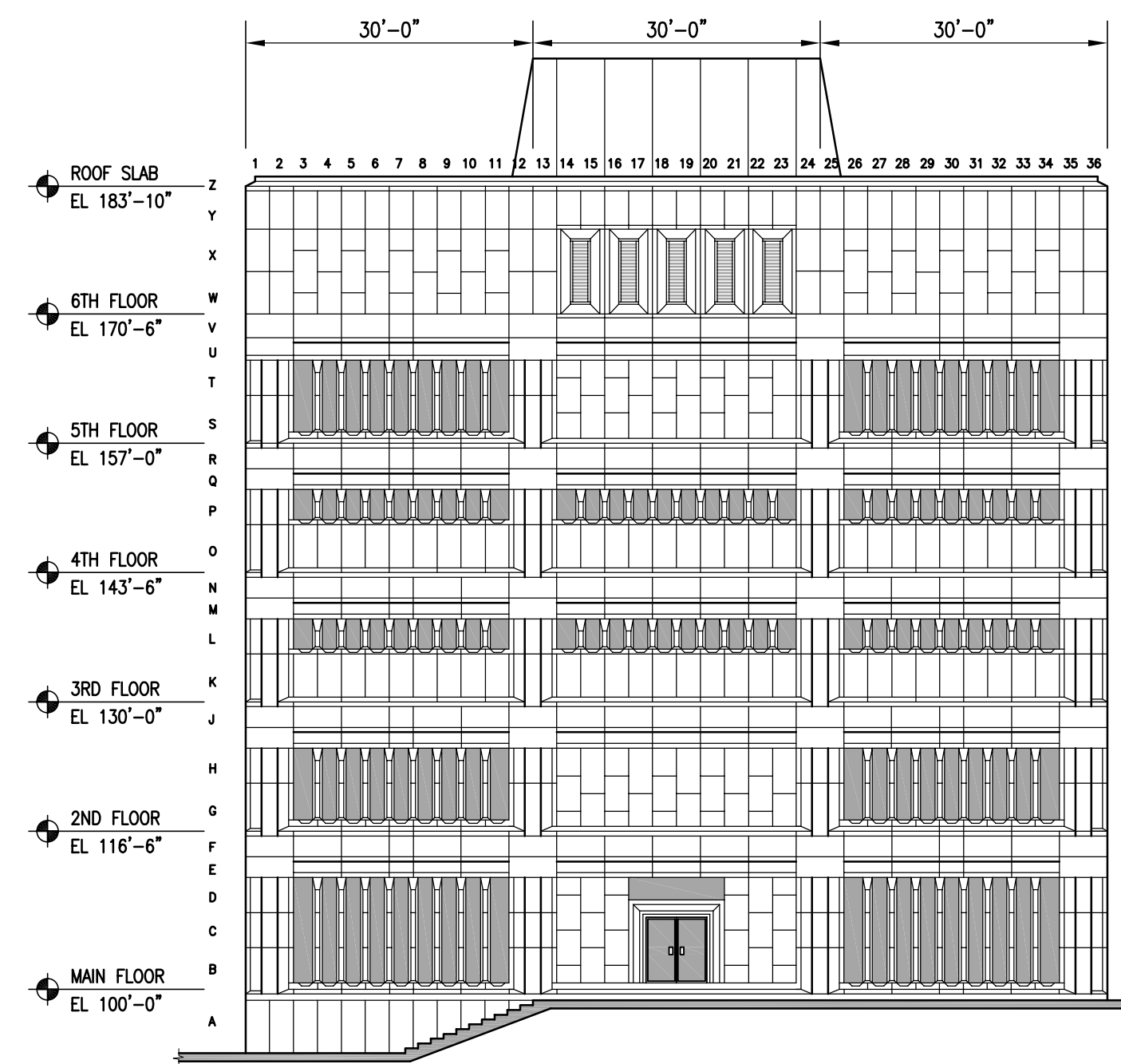
PROJECT No:

ADDRESS:

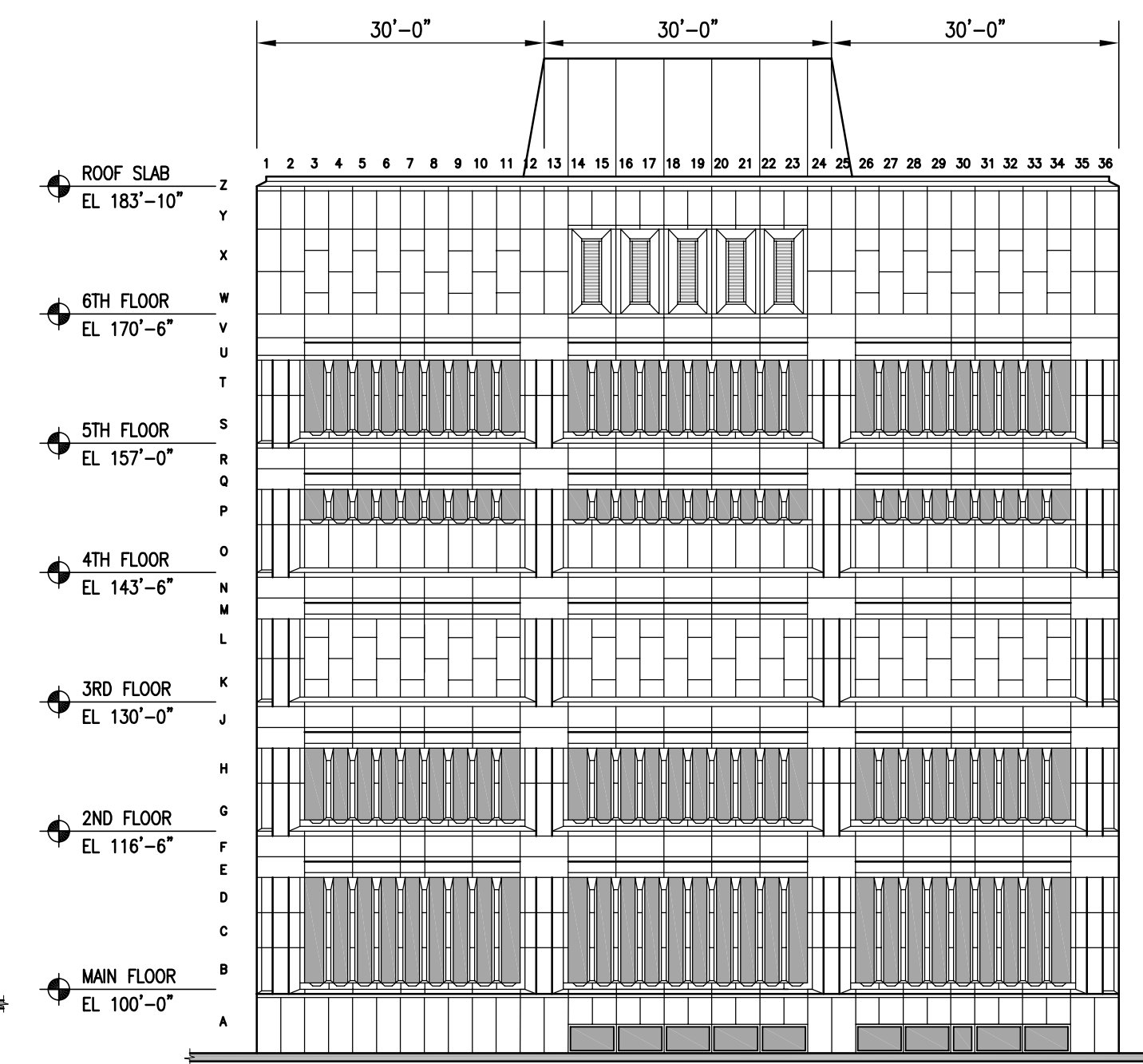
NOTES :



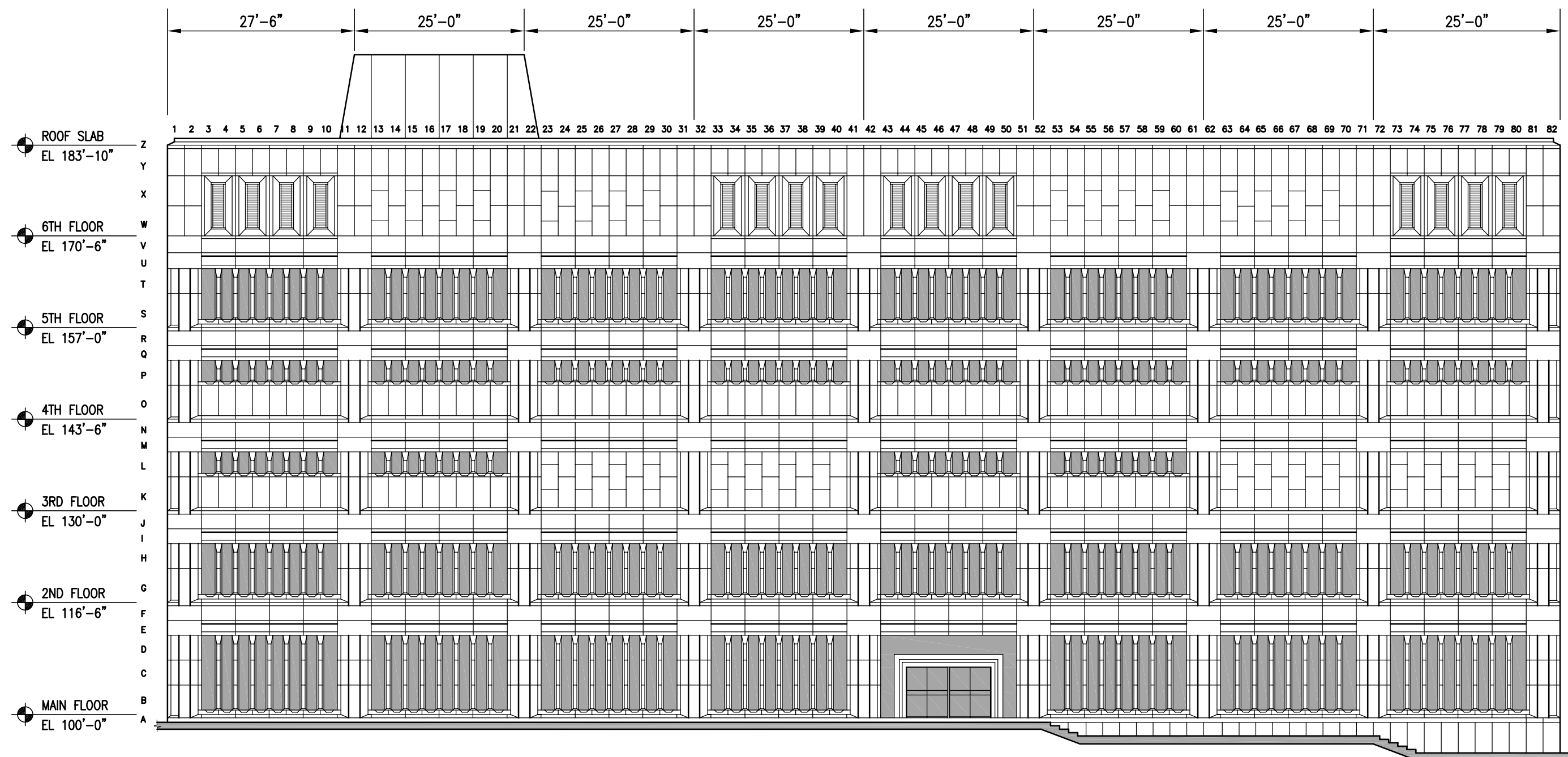
 **BUILDING PLAN**
1/16" = 1'-0"



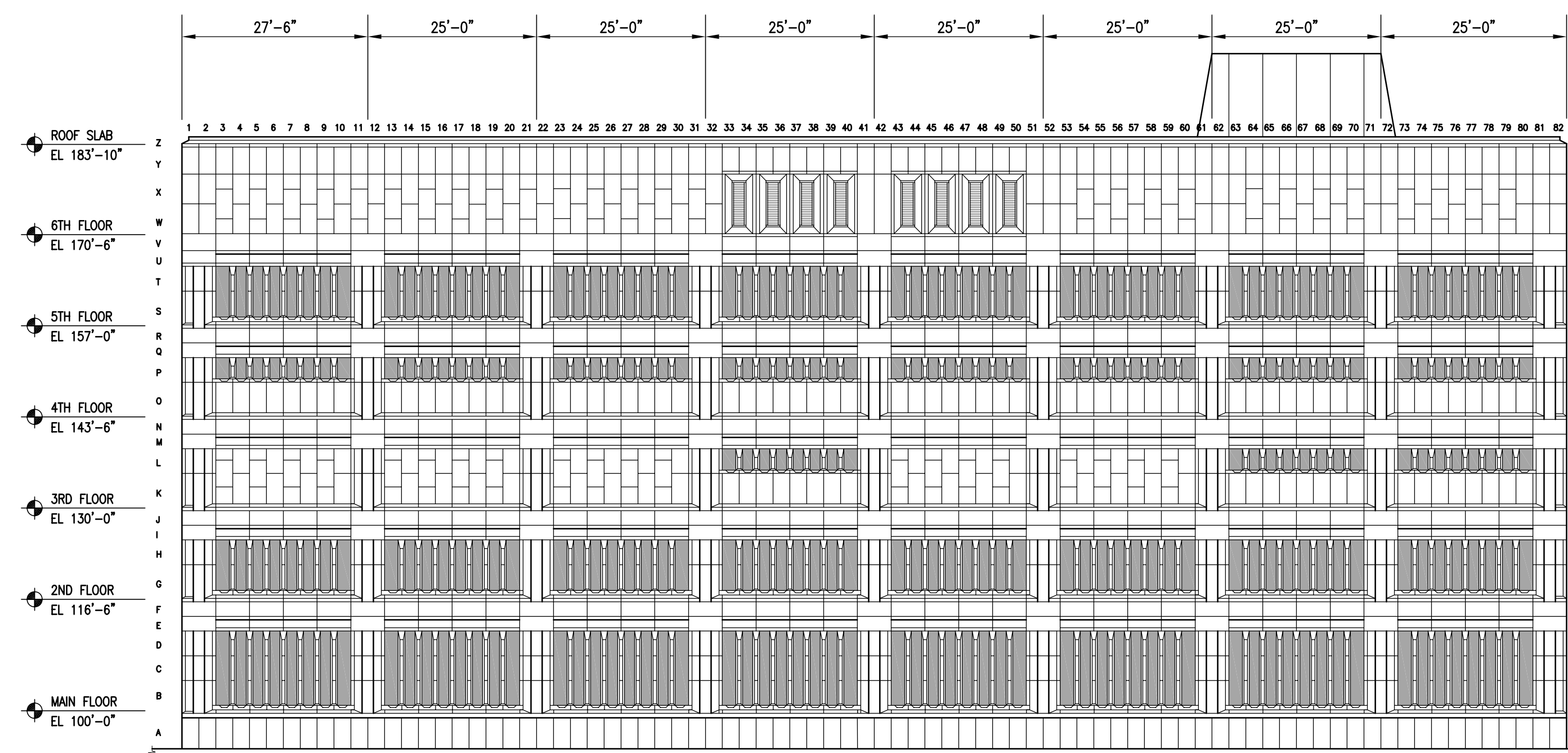
NORTH ELEVATION
1/16" = 1'-0"



SOUTH ELEVATION
1/16" = 1'-0"



WEST ELEVATION
1/16" = 1'-0"




EAST ELEVATION
1/16" = 1'-0"

 **CROSIER KILGOUR & PARTNERS LTD.** 2007-494
Consulting Structural Engineers
300-275 Carlton Street, Winnipeg, MB R3C 5S6
Tel: (204) 943-7501 Fax: (204) 943-7507

NO.	REVISION/DESCRIPTION	BY	DATE
SEALS			

DRAWN BY	CHECKED BY	APPROVED
TW	USER APPROVAL	

 **CITY OF WINNIPEG**
PLANNING, PROPERTY & DEVELOPMENT DEPARTMENT
CIVIC ACCOMMODATIONS DIVISION
300 - 65 GARRY ST. R3C 4K4

PROJECT
PUBLIC SAFETY BUILDING
151 PRINCESS STREET
2006 CLADDING STABILIZATION
WINNIPEG, MANITOBA

SHEET TITLE
PLAN VIEW & ELEVATION

SCALE	PROJECT NO.	SHEET NO.
AS NOTED	2007-494	SK-1

DRAWING SHEET SIZE: 24x36 PLOT 1:1