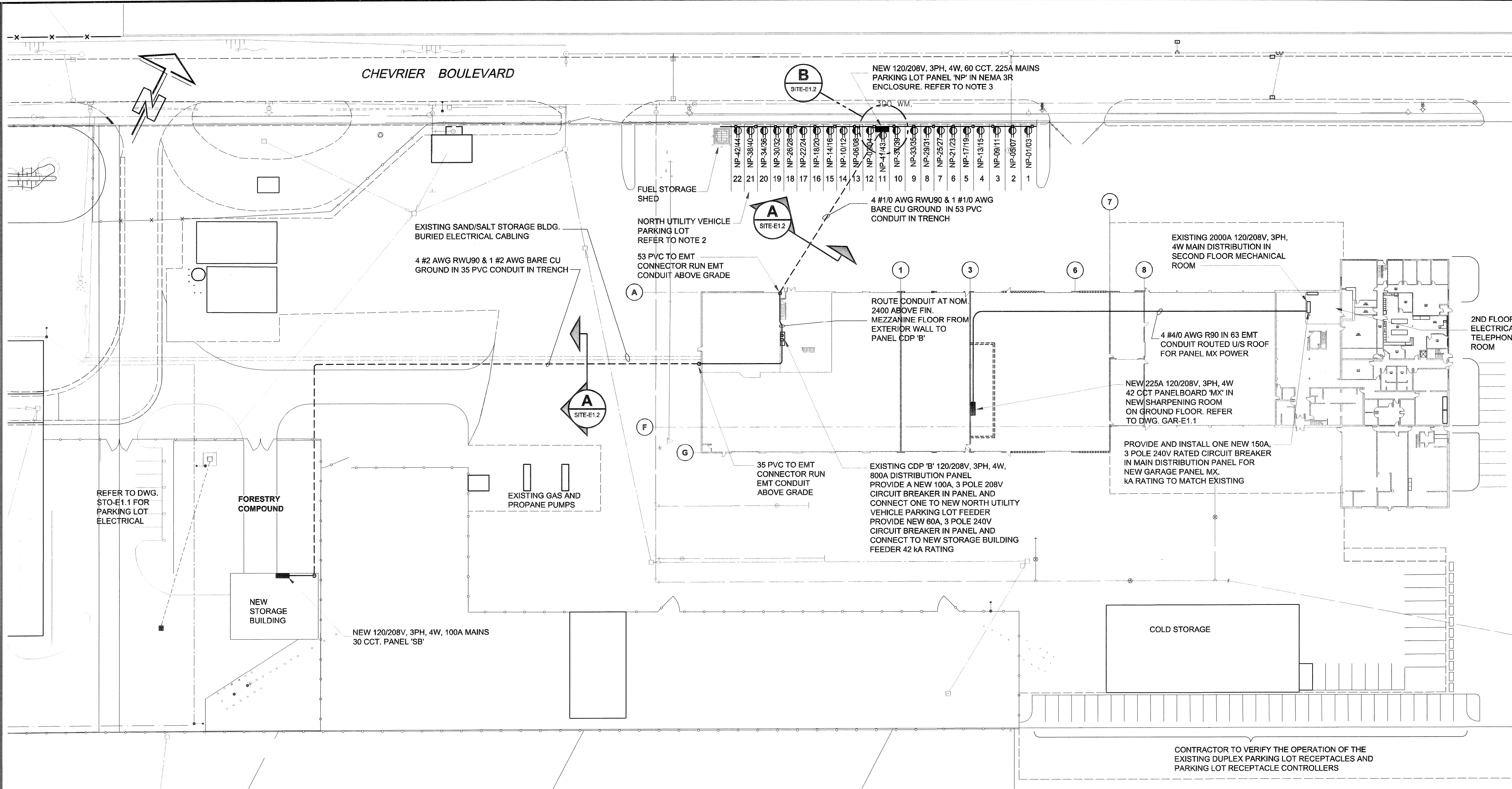
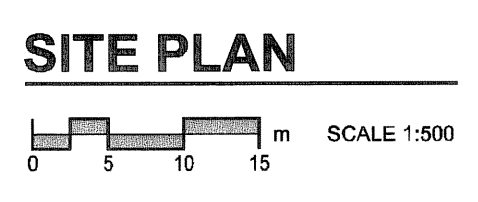


FILE NAME: E0001.DWG DATE: YEAR.MM.DD DESCRIPTION: SITE PLAN PROJECT NO: XXX-XXX-XX ADDRESS: 1539 Waverley Street, Winnipeg, MB.



- NOTES :
- LOCATION OF UNDERGROUND STRUCTURES AS SHOWN ARE BASED ON THE BEST INFORMATION AVAILABLE, NO GUARANTEE IS GIVEN THAT ALL EXISTING UNDERGROUND STRUCTURES ARE SHOWN OR THAT THE GIVEN LOCATIONS ARE EXACT. CONFIRMATION OF EXISTING AND EXACT LOCATION OF ALL SERVICES MUST BE OBTAINED FROM THE INDIVIDUAL UTILITIES BEFORE PROCEEDING WITH CONSTRUCTION. ELECTRONICALLY SWEEP AREAS TO BE TRENCHED BEFORE EXCAVATING.
 - PARKING SPACE TO ALLOW 2 "STACKED" VEHICLES PER STALL.
 - FOR BRANCH CIRCUITS ALL CONDUIT TO INCLUDE MIN. #12 AWG INSULATED GROUND FROM PANEL GROUND BUS TO GROUND LUG OF EACH WIRING DEVICE.



LEGEND

- | | | | | | |
|-------|---|-----|---------------------------------|----|----------------------------|
| — | SURFACE MOUNTED CONDUIT | ⊕ | SINGLE RECEPTACLE | C | MOUNTED ABOVE COUNTER |
| - - - | CONDUIT IN TRENCH | ⊕ | SPLIT FED DUPLEX RECEPTACLE | D | DEMOLISH |
| □ | DISTRIBUTION PANEL | ⊕ | HARD WIRE CONNECTION | E | EXISTING TO REMAIN |
| □ | FLUORESCENT LUMINAIRE, TYPE 1 | ⊕ | MAGNETIC STARTER | ER | EXISTING REUSED/RE-FED |
| ⊙ | CEILING MOUNTED LUMINAIRE, TYPE 1 | ⊕ | MOTOR AND DISCONNECT SWITCH | NL | NON-SWITCHED NIGHT LIGHT |
| ⊙ | WALL MOUNTED LUMINAIRE, TYPE 1 | ⊕ | DISCONNECT SWITCH | R | RELOCATED LOCATION OF ITEM |
| EXIT | EXIT SIGN | ⊕ | PULL STATION | WP | WEATHER PROOF |
| ⊕ | SINGLE EMERGENCY LIGHTING HEAD | ⊕ | HORN | | |
| ⊕ | DOUBLE EMERGENCY LIGHTING HEADS | ⊕ | BELL | | |
| ⊕ | DOUBLE EMERGENCY LIGHTING HEADS WITH BATTERY BANK | ⊕ | SMOKE DETECTOR | | |
| ⊕ | LIGHTING SWITCH LINE VOLTAGE | ⊕ | HEAT DETECTOR | | |
| 3 | THREE WAY | ⊕ | END OF LINE RESISTOR | | |
| T | TOGGLE LIT IN OFF POSITION | ⊕ | DUCT SMOKE DETECTOR | | |
| ⊕ | PHOTOCELL | F | FIXED TEMPERATURE HEAT DETECTOR | | |
| ⊕ | DUPLEX RECEPTACLE | R/R | RATE OF RISE HEAT DETECTOR | | |
| ⊕ | GFI: GROUND FAULT INTERRUPT | ⊕ | DATA OUTLET | | |
| ⊕ | NEW POWER POLE | ⊕ | VOICE OUTLET | | |
| | | ⊕ | VOICE/DATA COMBINATION OUTLET | | |

D	ISSUED FOR TENDER	SCK	07/11/02
C	ISSUED FOR FINAL REVIEW	SCK	07/10/03
B	ISSUED FOR 100% REVIEW	SCK	07/09/03
A	ISSUED FOR CLIENT REVIEW	QL	07/08/07
NO.	REVISION/DESCRIPTION	BY	DATE

SEALS

DRAWN BY: SCK CHECKED BY: USER APPROVAL APPROVED - DATE: 2007.05.09

CITY OF WINNIPEG
PLANNING, PROPERTY & DEVELOPMENT DEPARTMENT
CIVIC ACCOMMODATIONS DIVISION
300 - 65 GARRY ST. R3C 4K4

PROJECT
FORESTRY & LANDSCAPE DEVELOPMENT
FACILITY ENHANCEMENT PROJECT

PROJECT ADDRESS
SHEET TITLE

ELECTRICAL
SITE PLAN - STORAGE BUILDING
PARKING LOT RECEPTACLES

UMA AECOM REVIEW

UMA Engineering Ltd. (MB)
No. 256 Date: Nov 21 07

SCALE: 1:500 PROJECT NO: 0265-395-02 SHEET NO: SITE-E1.1
DRAWING SHEET SIZE: A1 (841mm x 594mm) PLOT 1:1

