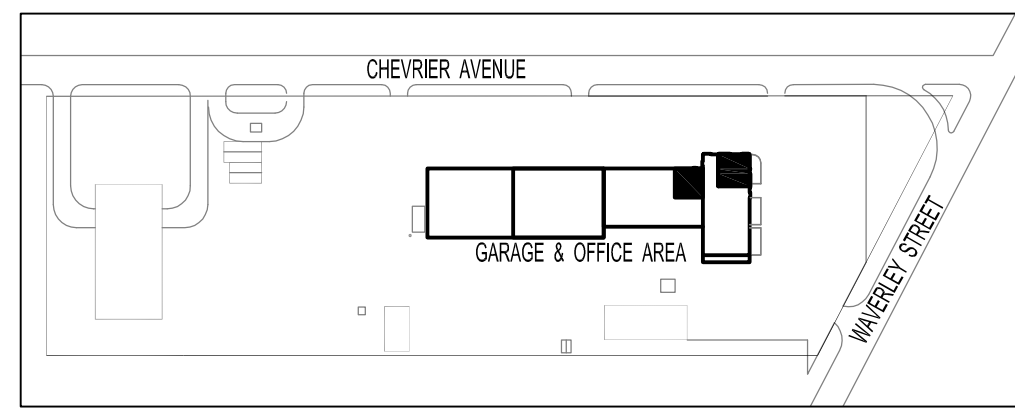
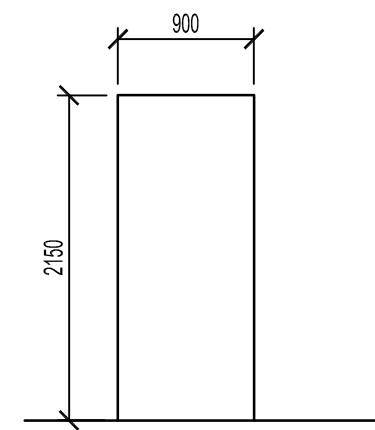
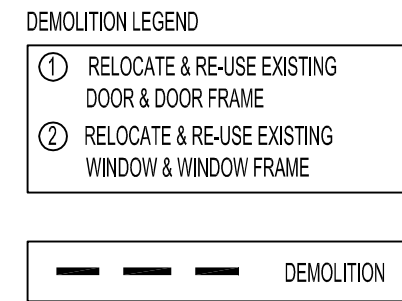


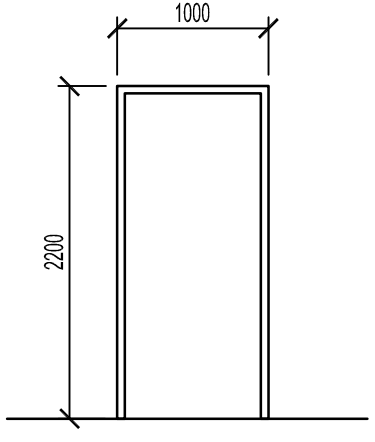
PROJECT No: 06063 ADDRESS: 1539 Waverley Street, Winnipeg, MB DESCRIPTION: OFFICE - MAIN & SECOND FLOOR PLANS, RCP, MILLWORK & SCHEDULES DATE: 2007 Apr 12 FILE NAME: 06063-OFF-A2.1.dwg



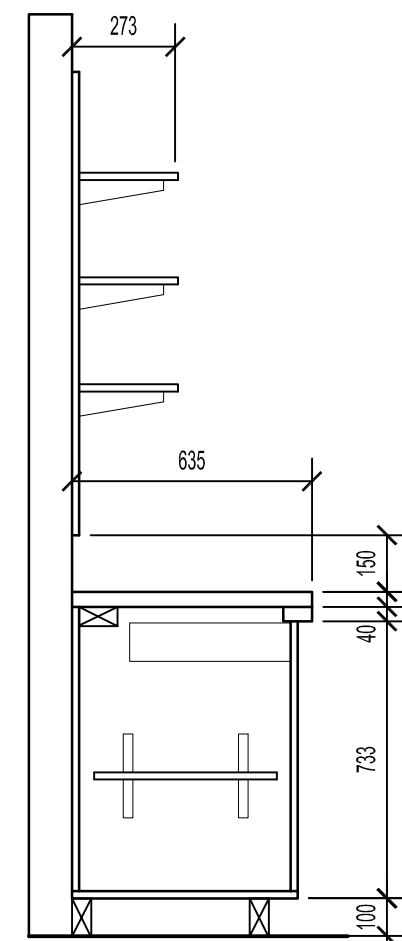
KEY PLAN
SCALE: NTS



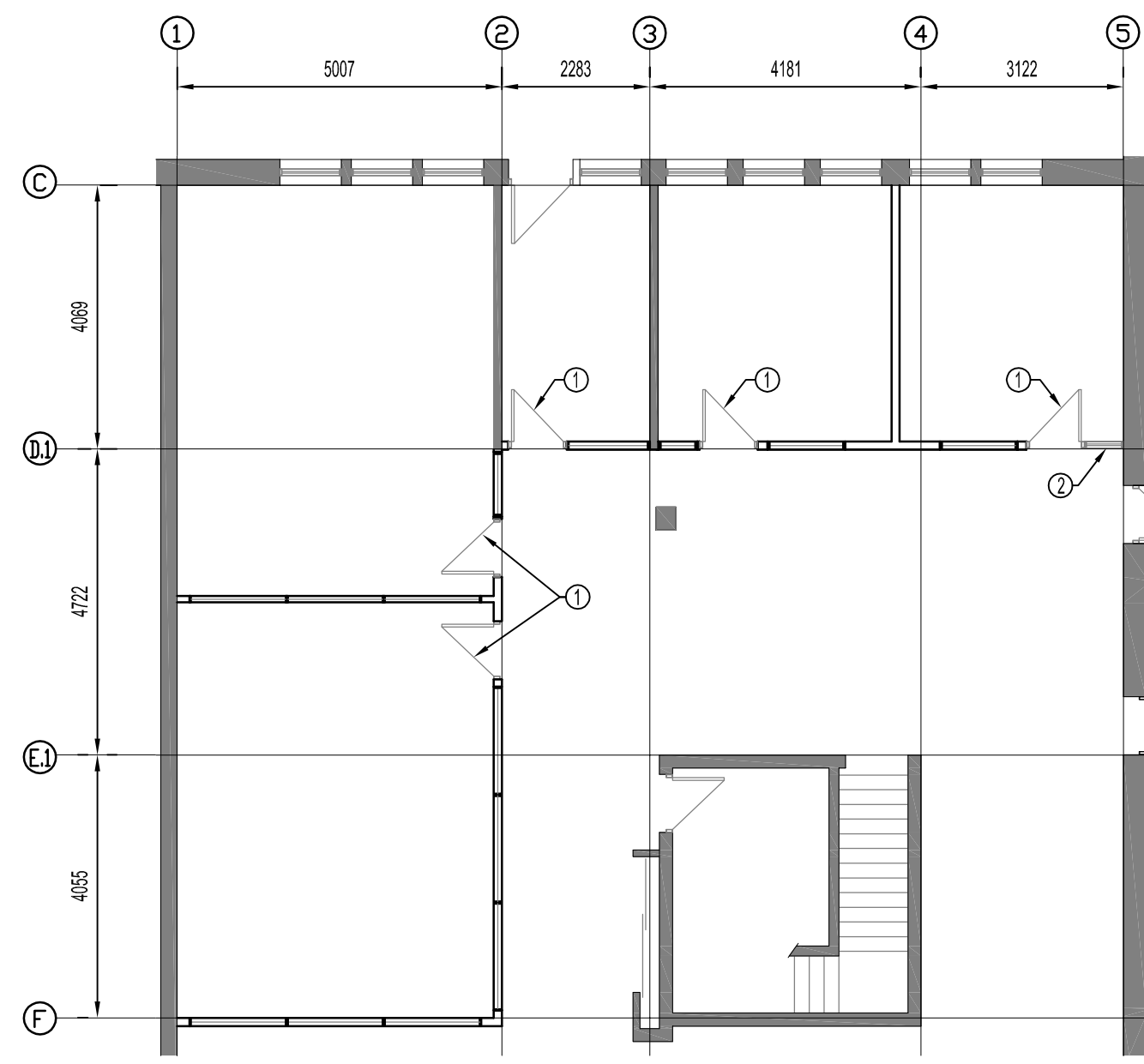
DOOR TYPE
SCALE: 1:50



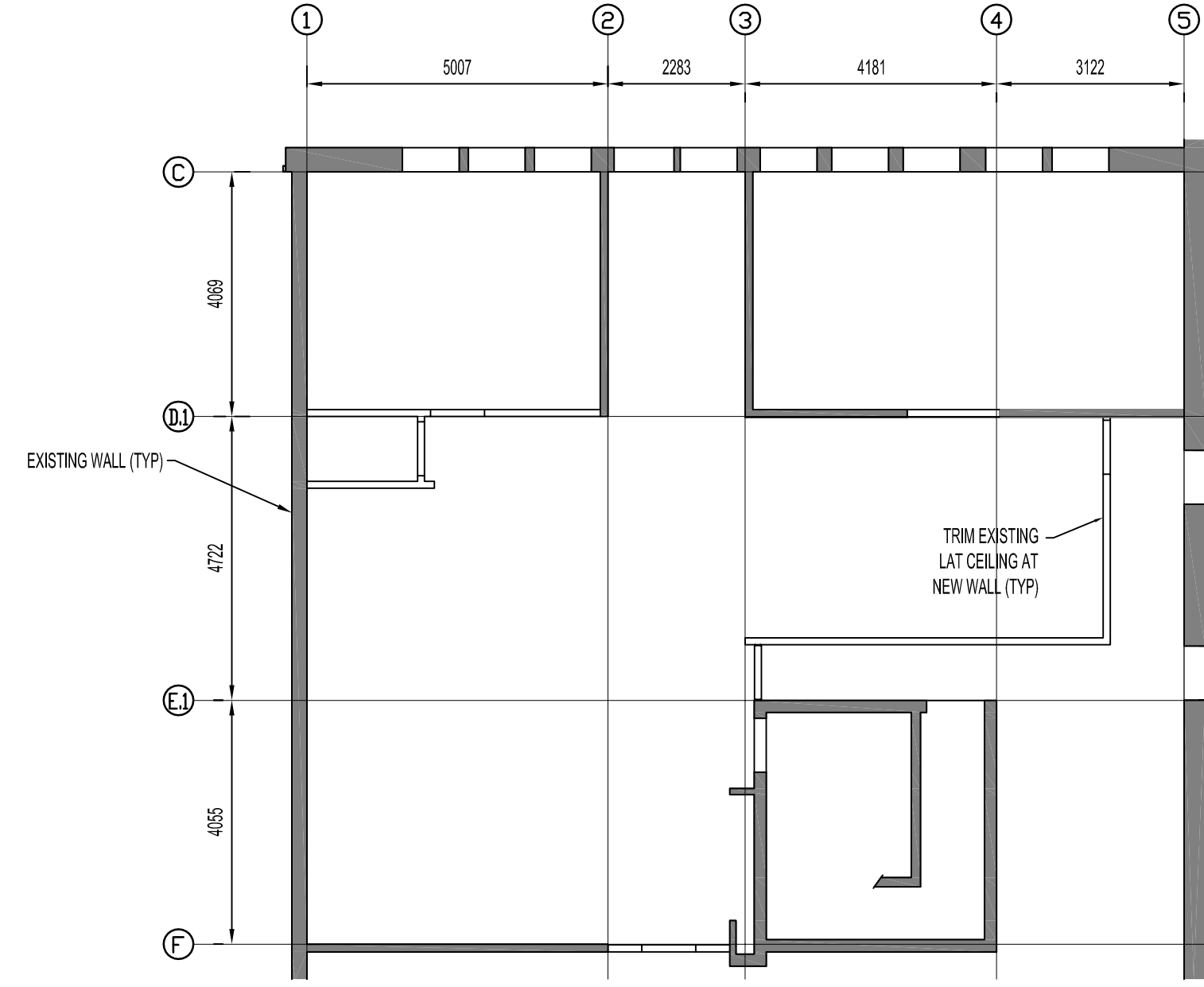
FRAME TYPE
SCALE: 1:50



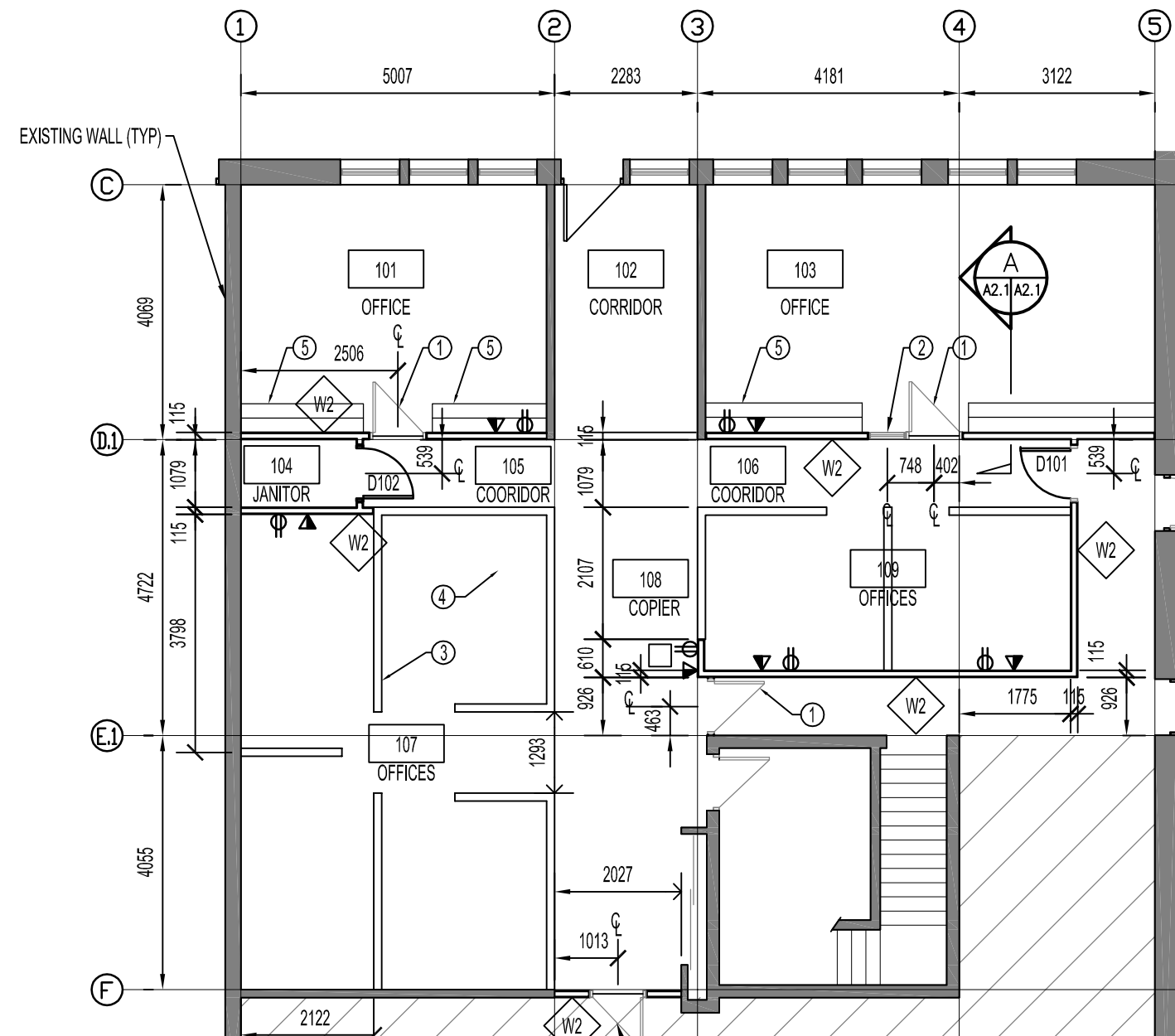
SECTION A-A
SCALE: 1:20



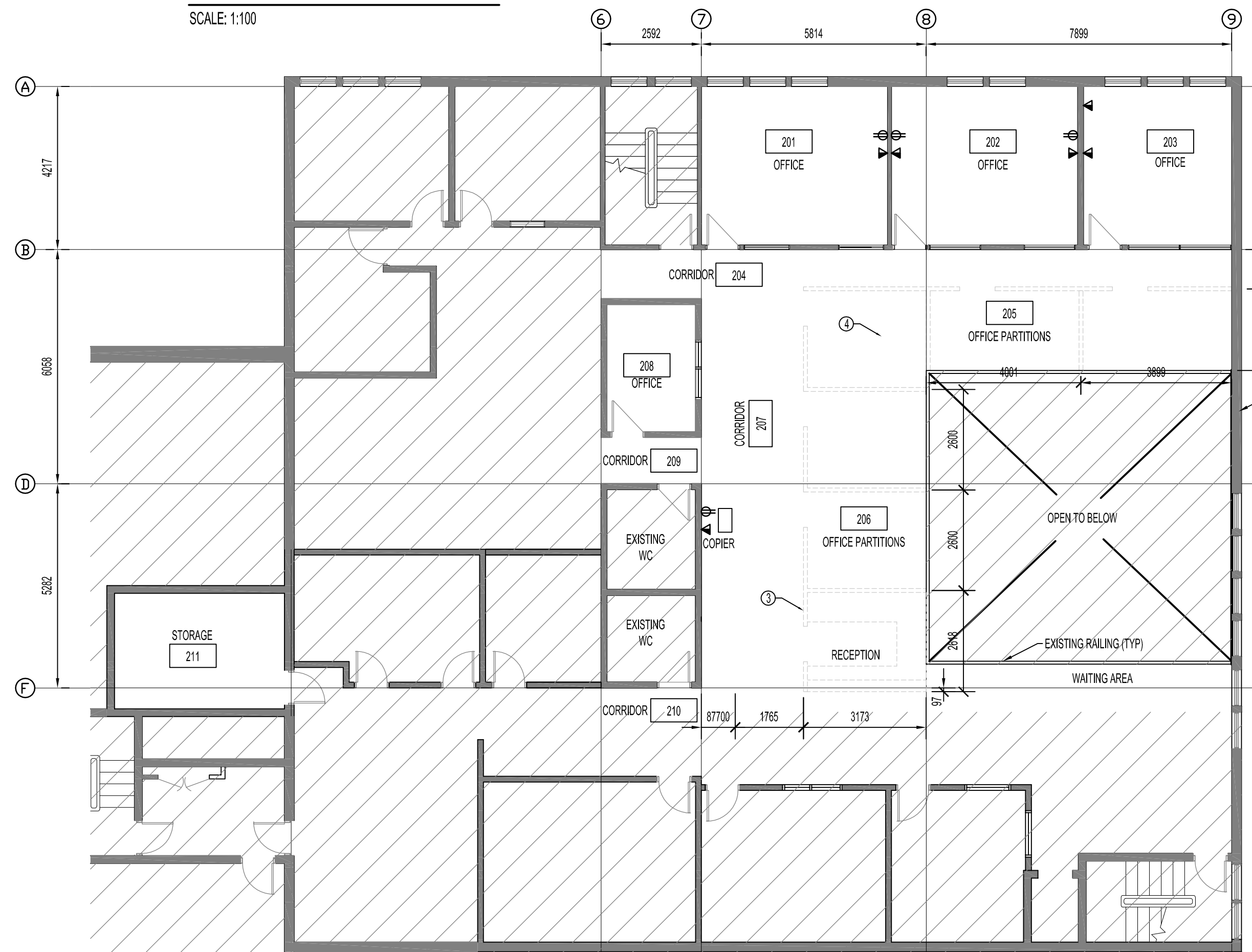
DEMOLITION - MAIN FLOOR PLAN
SCALE: 1:100



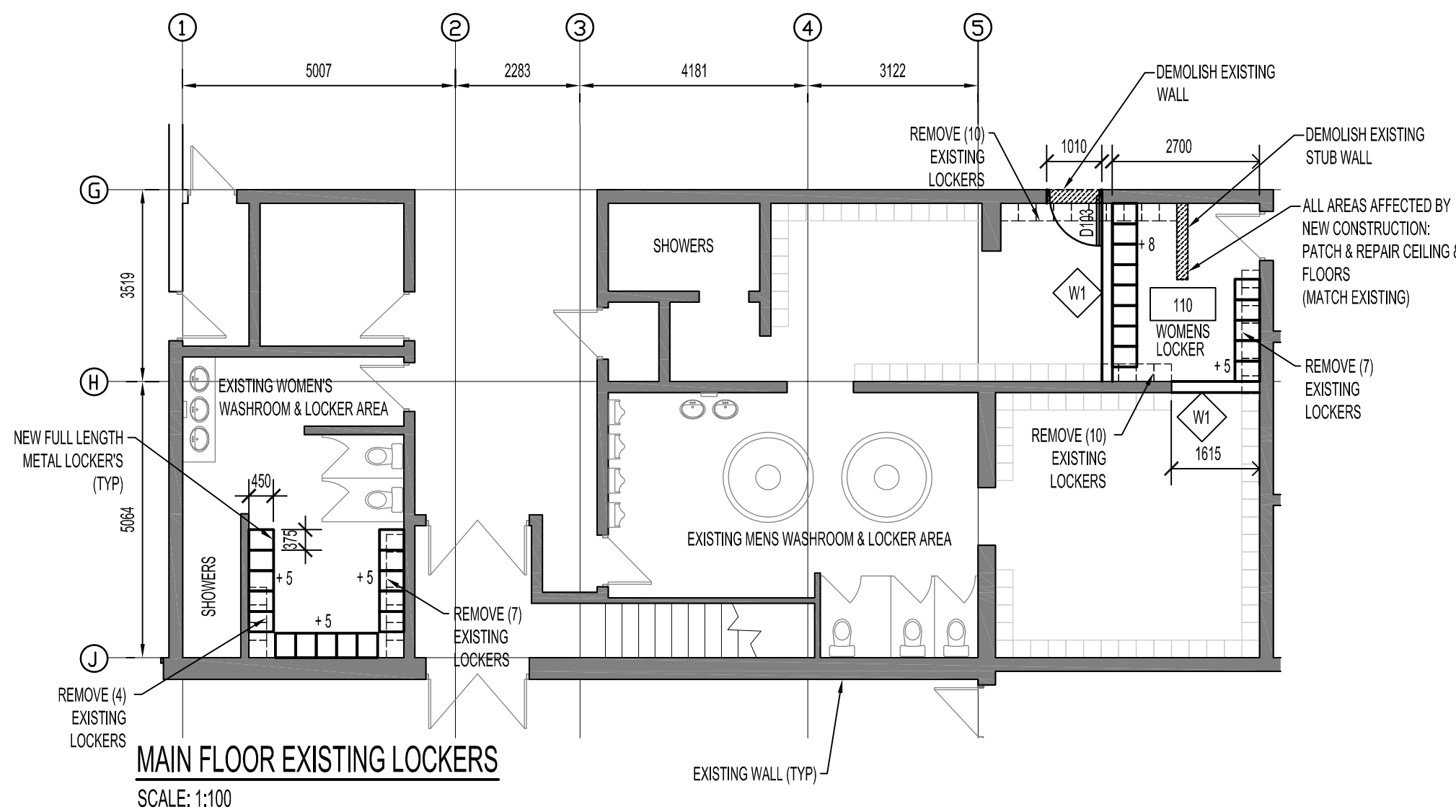
MAIN FLOOR REFLECTED CEILING PLAN
SCALE: 1:100



MAIN FLOOR PLAN
SCALE: 1:100



SECOND FLOOR PLAN
SCALE: 1:100



MAIN FLOOR EXISTING LOCKERS
SCALE: 1:100

LEGEND

SV	SHEET VINYL
VCB	VINYL COVE BASE (4" HIGH)
CONC	CONCRETE
CSV	COVERED SHEET VINYL (4" HIGH)
DW	DRYWALL
LAT	LAYAN ACOUSTIC TILE
PT	PAINTED
HM	HOLLOW METAL
PARTN	PARTITIONS
WD	WOOD
HC	HOLLOW CORE
GL	GLAZING

DRAWING NOTES:

- RE-INSTALL (EXISTING) DOOR & DOOR FRAME
- RE-INSTALL (EXISTING) WINDOW & FRAME
- SYSTEMS PARTITIONS (TYP) (NLC)
- WORK STATIONS (TYP) (NLC)
- NEW COUNTER WITH SHELVING ABOVE (TYP)
- PATCH & REPAIR CEILING TO MATCH EXISTING CEILING TILE & FRAMING WHERE REQUIRED
- NEW LAY IN ACOUSTIC TILE TO MATCH EXISTING CEILING TILE

FINISH SCHEDULE

ROOM NO.	ROOM NAME	FLOOR				WORTH WALLS				SOUTH WALLS				WEST WALLS				CEILING				COMMENTS
		FLOORING	BASE	MAT	FINISH	MAT	FINISH	MAT	FINISH	MAT	FINISH	MAT	FINISH	MAT	FINISH	MAT	FINISH	MAT	FINISH			
101	OFFICE	SV	CSV	-	DW/GL	PT	-	DW	PT	-	DW	PT	-	DW	PT	-	EXIST	LAT	-	-	EXIST	
102	CORRIDOR	SV	CSV	-	DW/GL	PT	-	DW	PT	-	DW	PT	-	DW	PT	-	EXIST	LAT	-	-	EXIST	
103	OFFICE	SV	CSV	-	DW/GL	PT	-	DW	PT	-	DW	PT	-	DW	PT	-	EXIST	LAT	-	-	EXIST	
104	JANITOR	SV	CSV	-	DW	PT	-	DW	PT	-	DW	PT	-	DW	PT	-	EXIST	LAT	-	-	EXIST	
105	COORRIDOR	SV	CSV	-	DW	PT	-	DW	PT	-	DW	PT	-	DW	PT	-	EXIST	LAT	-	-	EXIST	
106	COORRIDOR	SV	CSV	-	DW	PT	-	DW	PT	-	DW	PT	-	DW	PT	-	EXIST	LAT	-	-	EXIST	
107	OFFICES	SV	CSV	-	DW	PT	-	DW	PT	-	DW	PT	-	DW	PT	-	EXIST	LAT	-	-	EXIST	
108	COPIER	SV	CSV	-	DW	PT	-	DW	PT	-	DW	PT	-	DW	PT	-	EXIST	LAT	-	-	EXIST	
109	OFFICES	SV	CSV	-	PARTN	-	-	DW	PT	-	PARTN	-	-	-	-	-	EXIST	LAT	-	-	EXIST	
110	WOMENS LOCKER	-	-	-	-	-	-	-	-	-	-	-	-	-	-	-	EXIST	-	-	-	MATCH EXISTING	
201	OFFICE	SV	CSV	-	DW/GL	PT	-	DW	PT	-	DW/GL	PT	-	DW	PT	-	EXIST	LAT	-	-	EXIST	
202	OFFICE	SV	CSV	-	DW/GL	PT	-	DW	PT	-	DW/GL	PT	-	DW	PT	-	EXIST	LAT	-	-	EXIST	
203	OFFICE	SV	CSV	-	DW/GL	PT	-	DW	PT	-	DW/GL	PT	-	DW	PT	-	EXIST	LAT	-	-	EXIST	
204	CORRIDOR	SV	CSV	-	DW/GL	PT	-	DW	PT	-	DW/GL	PT	-	DW	PT	-	EXIST	LAT	-	-	EXIST	
205	OFFICES (PARTITIONS)	SV	CSV	-	PARTN	-	-	DW	PT	-	PARTN	-	-	-	-	-	EXIST	LAT	-	-	EXIST	
206	OFFICES (PARTITIONS)	SV	CSV	-	PARTN	-	-	DW	PT	-	PARTN	-	-	-	-	-	EXIST	LAT	-	-	EXIST	
207	CORRIDOR	SV	CSV	-	DW/GL	PT	-	DW	PT	-	DW/GL	PT	-	DW	PT	-	EXIST	LAT	-	-	EXIST	
208	OFFICE	SV	CSV	-	DW	PT	-	DW	PT	-	DW	PT	-	DW	PT	-	EXIST	LAT	-	-	EXIST	
209	COORRIDOR	SV	CSV	-	DW	PT	-	DW	PT	-	DW	PT	-	DW	PT	-	EXIST	LAT	-	-	EXIST	
210	COORRIDOR	SV	CSV	-	DW	PT	-	DW	PT	-	DW	PT	-	DW	PT	-	EXIST	LAT	-	-	EXIST	
211	STORAGE	SV	CSV	-	DW	PT	-	DW	PT	-	DW	PT	-	DW	PT	-	EXIST	LAT	-	-	EXIST	

DOOR SCHEDULE

DOOR NO.	TO ROOM	SIZE	SWING	TYPE	MAT	CORE	FINISH	COLOUR	PROFILE	MAT	TYPE	FINISH	COLOUR	GROUP	RATING	GRILLES	COMMENTS
D101	CORRIDOR	50x900x2150	LHR	D1	HM	HC	PT	-	-	HM	F1	PT	-	1	45 MIN	N/A	
D102	JANITOR	50x900x2150	LHR	D1	HM	HC	PT	-	-	HM	F1	PT	-	1	-	N/A	
D103	WOMENS LOCKER	50x900x2150	LH	D1	HM	HC	PT	-	-	HM	F1	PT	-	3	-	N/A	

HARDWARE GROUP SCHEDULE

GROUP 1

- (3) HINGES
- LOCKSET

GROUP 2

- (3) HINGES
- LOCKSET
- 45 MINUTE FIRE RATED

GROUP 3

- (3) HINGES
- PUSH/PULL HANDSET
- HICK PLATE

WALL SCHEDULE

- W1 - 190 x 300 MASONRY BLOCK
- W2 - 13mm GYPSUM BOARD, 88mm STEEL STUD @ 400mm O/C, 13mm GYPSUM BOARD

NOT INCLUDED IN CONTRACT:

- AREAS NOT INCLUDED IN CONTRACT

GENERAL NOTES:

- ALL EXISTING DOORS TO BE RE-KEYED
- ALL EXISTING DOORS TO BE PAINTED
- STEAM CLEAN ALL EXISTING CARPETS

NOTES :

THESE DRAWINGS SHALL NOT BE SCALED.

THE CONTRACTOR SHALL VISIT THE SITE AND SATISFY ONESELF ALL DIMENSIONS, DATUM, AND DETAILED INFORMATION SHOWN ARE CORRECT.

THE CONTRACTOR IS TO REVIEW AND COORDINATE ALL ARCHITECTURAL, MECHANICAL, ELECTRICAL AND STRUCTURAL DRAWINGS FOR ADDITIONAL OPENINGS THROUGH FLOORS, WALLS, AND CEILINGS FOR DUCT, PIPE & ELECTRICAL RISERS AND ALL OPENINGS NOT SHOWN ON DRAWINGS.

ALL OPENINGS THROUGH FIRE ASSEMBLIES ARE TO BE FIRE STOPPED AND SEALED WITH ULC APPROVED FIRE STOPPING TO MAINTAIN THE INTEGRITY OF THE FIRE SEPARATION, AND PROVIDE A SMOKE-TIGHT BARRIER.

ALL PRODUCTS AND MATERIALS TO BE USED AND INSTALLED SHALL CONFORM WITH MANUFACTURER'S SPECIFICATIONS & APPLICABLE CODES.

THE CONTRACTOR SHALL BE RESPONSIBLE TO PATCH AND MAKE GOOD ALL EXISTING CONSTRUCTION AFFECTED BY THE REMOVAL OF ALL ITEMS FORMING THE PART OF THE RENOVATION WORK.

WHERE NEW FLOORING AND BASE IS TO BE INSTALLED IN EXISTING AREAS (REFER TO FLOOR PLAN AND ROOM SCHEDULE) THE EXISTING FLOORING SURFACE AND BASE MUST BE REMOVED, UNLESS OTHERWISE NOTED. ALL FLOOR SURFACES SHALL BE PREPARED IN ACCORDANCE TO MANUFACTURER'S RECOMMENDATIONS FOR INSTALLATION OF NEW FLOOR.

WHERE PAINTING OF EXISTING WALLS IS INDICATED ON THE ROOM SCHEDULE, THESE WALLS MUST BE CLEANED OF ANY EXISTING WALL COVERING, PATCHED & PREPARED TO ACCEPT NEW MATERIAL, UNLESS OTHERWISE NOTED.

NO.	REVISION/DESCRIPTION	BY	DATE
02	ISSUED FOR TENDER	DG	NOV/07
01	FINAL REVIEW	DG	OCT/07

SEALS

DRAWN BY CAD **CHECKED BY** USER **APPROVED**

DATE 2007 Apr 12

CITY OF WINNIPEG
PLANNING, PROPERTY & DEVELOPMENT DEPARTMENT
CIVIC ACCOMMODATIONS DIVISION
300 - 65 GARRY ST. R3C 4K4

PROJECT
CONSTRUCTION OF OFFICE/GARAGE
RENOVATIONS & STORGE BUILDING
AT 1539 WAVERLEY STREET
1539 Waverley Street, Winnipeg, MB

SHEET TITLE
OFFICE - MAIN FLOOR PLAN
- DEMO & REFLECTED CEILING PLAN
- MILLWORK & SCHEDULES

SCALE AS SHOWN **PROJECT NO.** 06063 **SHEET NO.** OFF - A2.1

DRAWING SHEET SIZE: A1 (841mm x 594mm) PLOT 1:1