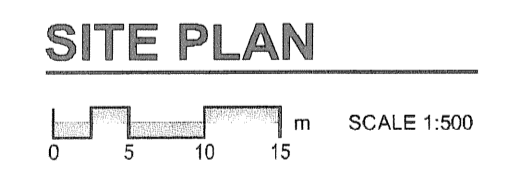
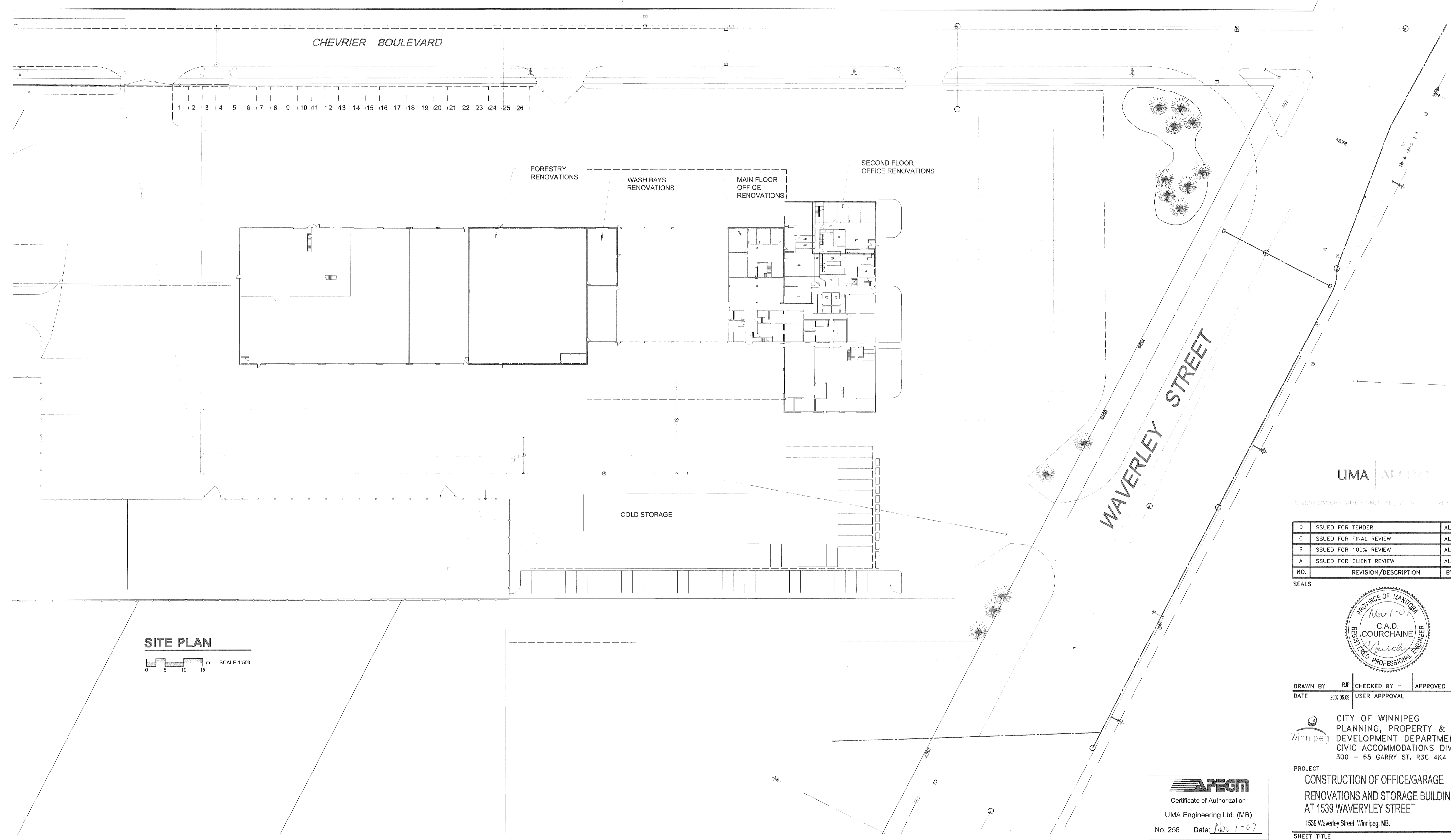
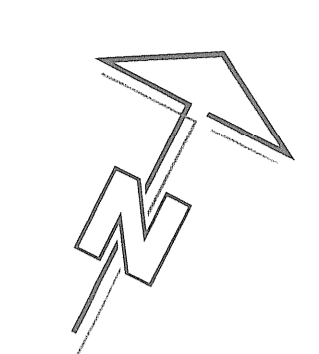


FILE NAME: 0265-395-02_01-M-0002_R1.dwg
 DATE: 2007.06.05
 DESCRIPTION: SITE PLAN
 PROJECT NO: 0265-395-02
 ADDRESS: 1539 Waverley Street, Winnipeg, MB.

NOTES :



UMA | AECOM
 © 2007 UMA ENGINEERING LTD. ALL RIGHTS RESERVED

D	ISSUED FOR TENDER	ALS	07/11/02
C	ISSUED FOR FINAL REVIEW	ALS	07/10/02
B	ISSUED FOR 100% REVIEW	ALS	07/08/02
A	ISSUED FOR CLIENT REVIEW	ALS	07/06/02
NO.	REVISION/DESCRIPTION	BY	DATE

SEALS

DRAWN BY	RP	CHECKED BY	-	APPROVED	-
DATE	2007.06.05	USER APPROVAL			

CITY OF WINNIPEG
 PLANNING, PROPERTY &
 DEVELOPMENT DEPARTMENT
 CIVIC ACCOMMODATIONS DIVISION
 300 - 65 GARRY ST. R3C 4K4

PROJECT
 CONSTRUCTION OF OFFICE/GARAGE
 RENOVATIONS AND STORAGE BUILDING
 AT 1539 WAVERLEY STREET
 1539 Waverley Street, Winnipeg, MB.

SHEET TITLE
 MECHANICAL
 SITE PLAN

APEGM
 Certificate of Authorization
 UMA Engineering Ltd. (MB)
 No. 256 Date: Nov 1-07

ISSUED FOR
TENDER
 Date: 2007/11/02

ALS
 DRN CHK DES ENG IDR
 UMA REVIEW

SCALE	PROJECT NO.	SHEET NO.
AS NOTED	0265-395-02	GEN - M2.1

DRAWING SHEET SIZE: A1 (841mm x 594mm) PLOT 1:1