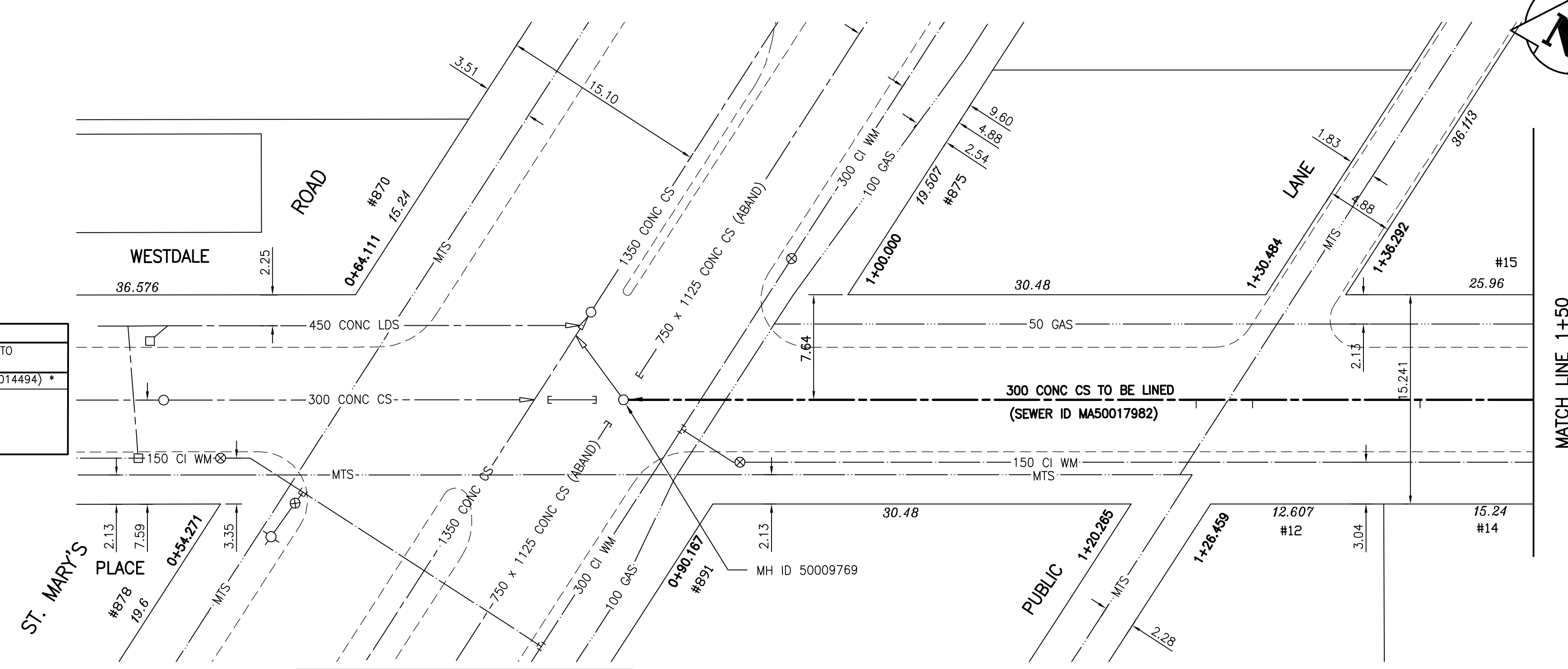


**THORNDALE AVENUE**

SEWER JUNCTION INFORMATION (MA50017982)			
1ST MH EAST OF ST. MARY'S ROAD (MHID 50014494) TO MH AT ST. MARY'S (MHID 50009769)			
DISTANCE FROM 1ST MH EAST OF ST. MARY'S ROAD (MH 50014494) *			
93.8 WEST	150 MM DIA.	SOUTH JN	
106.0 WEST	150 MM DIA.	SOUTH JN	
110.1 WEST	150 MM DIA.	SOUTH CNI	

\* Information from Sewer Video Inspection



**NOTE:**  
STATIONS ALONG N E OF THORNDALE AVE.

SEWER SERVICE INFORMATION		
ADDRESS	SIZE	PROPERTY LINE LOCATION
870 ST. MARY'S RD RESIDENTIAL	NO INFO AVAILABLE	NO INFO AVAILABLE
875 ST. MARY'S RD RESIDENTIAL	NO INFO AVAILABLE	NO INFO AVAILABLE
878 ST. MARY'S RD RESIDENTIAL	NO INFO AVAILABLE	NO INFO AVAILABLE
891 ST. MARY'S RD RESIDENTIAL	NO INFO AVAILABLE	NO INFO AVAILABLE
12 THORNDALE AVE RESIDENTIAL	150 mm	3.7 m W of W HL
14 THORNDALE AVE RESIDENTIAL	150 mm	1.8 m E of W HL
15 THORNDALE AVE RESIDENTIAL	150 mm	3.2 m W of E HL

**WARNING**  
IF POWER EQUIPMENT OR EXPLOSIVES ARE TO BE USED FOR EXCAVATION ON THIS PROJECT THE CONTRACTOR MUST:  
1) NOTIFY THE GAS COMPANY OF THE PROPOSED LOCATION OF EXCAVATION.  
2) TAKE PRECAUTION TO AVOID DAMAGE TO GAS COMPANY INSTALLATIONS.  
SEE PROVINCIAL REGULATION 140/92 FOR DETAILS

**METRIC**  
WHOLE NUMBERS INDICATE MILLIMETRES  
DECIMALIZED NUMBERS INDICATE METRES

BENCH MARK: 84R733 - N.E. Cor. of St. Mary's Rd. & Thorndale Ave., Tblt. on top of 0.05 m dia. x 2.4 m iron pipe, 2.7 m S. of N.L. of Thorndale Ave. & on E.L. of St. Mary's Rd.

BID OPPORTUNITY 449-2007

150 WM	WATERMAIN	150 WM	HYDRO	150 WM	WATERMAIN	150 WM	LOCATION APPROVED UNDERGROUND STRUCTURES
+	HYDRANT	+	M.T.S.	+	HYDRANT, VALVE	+	
o	VALVE	o	CONCRETE	o	LAND DRAINAGE SEWER	o	
---	LAND DRAINAGE SEWER	---	ASPHALT	---	WASTE WATER SEWER	---	
---	WASTE WATER SEWER	---	SIDEWALK	---	WASTE WATER SEWER	---	
o	MANHOLE	o	PROPERTY LINE	o	NORTH OR WEST GUTTER	o	
□	CATCH BASIN	□	SURVEY BAR	□	SOUTH OR EAST GUTTER	□	
▽	CURB INLET	▽	DITCH	▽	NORTH OR WEST P	▽	
+	JUNCTIONS	+	ELEVATION	+	SOUTH OR EAST P	+	
---	CULVERT	---	SIDEWALK RAMP	---	NORTH OR WEST DITCH	---	
---	GAS	---		---	SOUTH OR EAST DITCH	---	
---	EXISTING	---	LEGEND-PLAN	---	LEGEND-PROFILE	---	
---	LEGEND-PLAN	---	PROPOSED	---	PROPOSED	---	

NO.	REVISIONS	DATE	BY

**Stantec Consulting Ltd.**  
905 Waverley Street, Winnipeg, Manitoba  
Tel 204-489-5900 Fax 204-453-9012

DESIGNED BY: J.K.H. CHECKED BY: W.B.  
DRAWN BY: J.K.H. APPROVED BY: H.A.K.

HOR. SCALE: 1:250  
VERTICAL: 1:50

RELEASED FOR CONSTRUCTION: \_\_\_\_\_  
DATE: \_\_\_\_\_

ENGINEER'S SEAL  
ORIGINAL SEALED BY H.A. KATZ P. ENG. 07.07.17  
CONSULTANT DRAWING NO. C-216

**THE CITY OF WINNIPEG**  
WATER AND WASTE DEPARTMENT  
ENGINEERING DIVISION

**THORNDALE AVENUE**  
MH AT ST. MARY'S RD TO  
1ST MH E OF ST. MARY'S RD  
STA 0+84 TO STA. 1+50  
2007 SEWER RENEWALS BY CIPP LINING

SHEET 16 OF 19  
CAD FILE DRAWING NUMBER 09720C-216685.dwg  
CITY DRAWING NUMBER 06040