

SEWER SERVICE INFORMATION

ADDRESS	SIZE	PROPERTY LINE LOCATION
47 HINDLEY AVE RESIDENTIAL	150 mm	NO INFO AVAILABLE
48 HINDLEY AVE RESIDENTIAL	150 mm	NO INFO AVAILABLE
50 HINDLEY AVE RESIDENTIAL	150 mm	NO INFO AVAILABLE
51 HINDLEY AVE RESIDENTIAL	150 mm	NO INFO AVAILABLE
52 HINDLEY AVE RESIDENTIAL	150 mm	NO INFO AVAILABLE
53 HINDLEY AVE RESIDENTIAL	150 mm	NO INFO AVAILABLE
54 HINDLEY AVE RESIDENTIAL	150 mm	NO INFO AVAILABLE
55 HINDLEY AVE RESIDENTIAL	150 mm	NO INFO AVAILABLE
56 HINDLEY AVE RESIDENTIAL	150 mm	NO INFO AVAILABLE
57 HINDLEY AVE RESIDENTIAL	150 mm	NO INFO AVAILABLE
58 HINDLEY AVE RESIDENTIAL	150 mm	NO INFO AVAILABLE
59 HINDLEY AVE RESIDENTIAL	150 mm	NO INFO AVAILABLE
60 HINDLEY AVE RESIDENTIAL	150 mm	NO INFO AVAILABLE
61 HINDLEY AVE RESIDENTIAL	150 mm	NO INFO AVAILABLE
62 HINDLEY AVE RESIDENTIAL	150 mm	NO INFO AVAILABLE
63 HINDLEY AVE RESIDENTIAL	150 mm	NO INFO AVAILABLE
64 HINDLEY AVE RESIDENTIAL	150 mm	NO INFO AVAILABLE

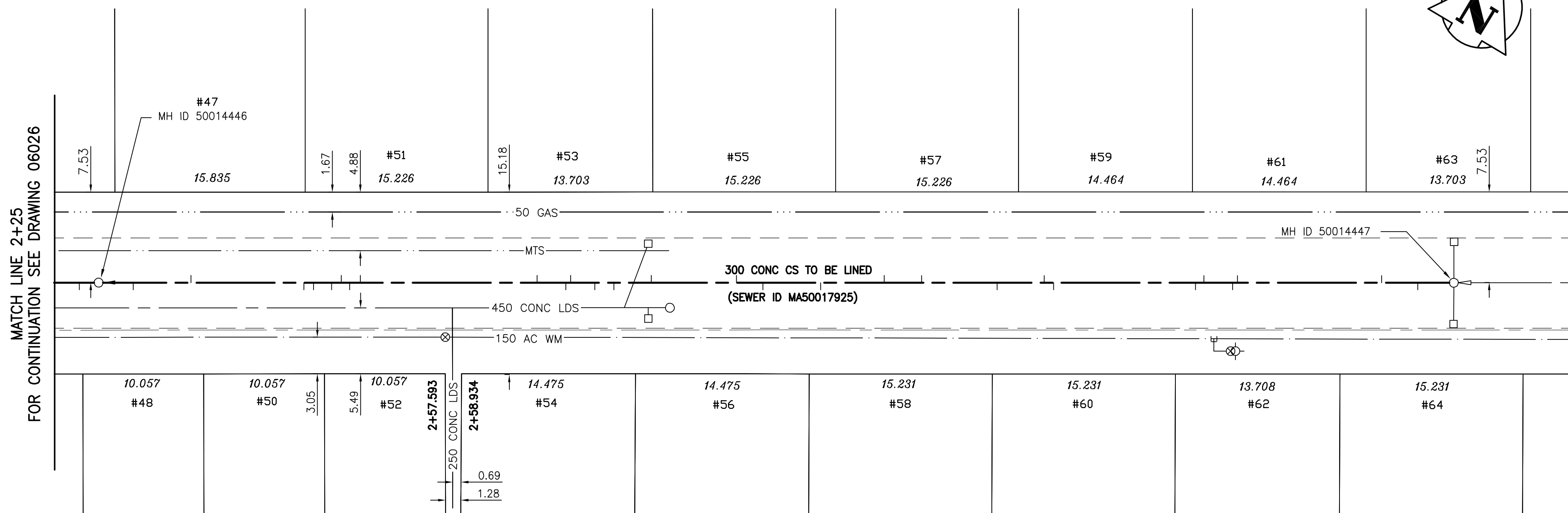
SEWER JUNCTION INFORMATION (MA50017925)

2ND MH WEST OF FITZPATRICK RD (MHID 50014447) TO 3RD MH WEST OF FITZPATRICK RD (MHID 50014446)

DISTANCE FROM 2ND MH WEST OF FITZPATRICK RD (MH 50014447) *

3.0	WEST	150 MM DIA.	SOUTH	JN	CAPPED
6.0	WEST	150 MM DIA.	NORTH	JN	LIVE
18.0	WEST	150 MM DIA.	NORTH	CNI	LIVE
18.4	WEST	150 MM DIA.	SOUTH	CXI	LIVE
20.8	WEST	150 MM DIA.	NORTH	JN	CAPPED
21.5	WEST	150 MM DIA.	SOUTH	JN	CAPPED
33.3	WEST	150 MM DIA.	SOUTH	CNI	LIVE
34.1	WEST	150 MM DIA.	NORTH	JN	CAPPED
38.0	WEST	150 MM DIA.	SOUTH	JN	CAPPED
44.3	WEST	150 MM DIA.	NORTH	CNI	LIVE
47.4	WEST	150 MM DIA.	NORTH	JN	CAPPED
52.7	WEST	150 MM DIA.	SOUTH	JN	LIVE
57.5	WEST	150 MM DIA.	SOUTH	CN	LIVE
59.7	WEST	150 MM DIA.	NORTH	CNI	LIVE
66.8	WEST	150 MM DIA.	NORTH	JN	CAPPED
69.9	WEST	150 MM DIA.	SOUTH	CN	LIVE
71.5	WEST	150 MM DIA.	SOUTH	CN	LIVE
73.5	WEST	150 MM DIA.	NORTH	JN	CAPPED
73.9	WEST	150 MM DIA.	SOUTH	JN	CAPPED
76.3	WEST	150 MM DIA.	NORTH	CN	LIVE
91.0	WEST	150 MM DIA.	NORTH	CN	LIVE
91.9	WEST	150 MM DIA.	SOUTH	CN	LIVE
92.6	WEST	150 MM DIA.	NORTH	JN	CAPPED
93.4	WEST	150 MM DIA.	SOUTH	JN	CAPPED
94.9	WEST	150 MM DIA.	SOUTH	CN	LIVE
95.7	WEST	150 MM DIA.	SOUTH	CX	LIVE, FRACTURED
105.1	WEST	150 MM DIA.	NORTH	JN	LIVE
109.9	WEST	150 MM DIA.	SOUTH	CNI	LIVE

* Information from Sewer Video Inspection



WARNING

IF POWER EQUIPMENT OR EXPLOSIVES ARE TO BE USED FOR EXCAVATION ON THIS PROJECT THE CONTRACTOR MUST:

- 1) NOTIFY THE GAS COMPANY OF THE PROPOSED LOCATION OF EXCAVATION.
- 2) TAKE PRECAUTION TO AVOID DAMAGE TO GAS COMPANY INSTALLATIONS.

SEE PROVINCIAL REGULATION 140/92 FOR DETAILS

METRIC

WHOLE NUMBERS INDICATE MILLIMETRES
DECIMALIZED NUMBERS INDICATE METRES

NOTE:
STATIONS ALONG N P OF HINDLEY AVE.

BENCH MARK: 84R746- N.W. Cor. Worthington Ave. & Fitzpatrick Rd., Tblt. on top of 0.05m dia. x 2.4m iron pipe, 3m S. of N.L. of Worthington Ave. & 2.1m E. of W.L. of Fitzpatrick Rd.

BID OPPORTUNITY 449-2007



150 WM	WATERMAIN	150 WM	HYDRO	150 WM	WATERMAIN	150 WM	WATERMAIN	150 WM
+	HYDRANT	+	M.T.S.	+	HYDRANT, VALVE	+	HYDRANT, VALVE	+
o	VALVE	o	CONCRETE	o	LAND DRAINAGE SEWER	o	LAND DRAINAGE SEWER	o
---	LAND DRAINAGE SEWER	---	ASPHALT	---	WASTE WATER SEWER	---	WASTE WATER SEWER	---
---	WASTE WATER SEWER	---	SIDEWALK	---	C. PROFILE	---	C. PROFILE	---
o	MANHOLE	o	PROPERTY LINE	o	NORTH OR WEST GUTTER	o	NORTH OR WEST GUTTER	o
□	CATCH BASIN	□	SURVEY BAR	□	SOUTH OR EAST GUTTER	□	SOUTH OR EAST GUTTER	□
▽	CURB INLET	▽	DITCH	▽	NORTH OR WEST P.	▽	NORTH OR WEST P.	▽
+	JUNCTIONS	+	ELEVATION	+	SOUTH OR EAST P.	+	SOUTH OR EAST P.	+
---	CULVERT	---	SIDEWALK RAMP	---	NORTH OR WEST DITCH	---	NORTH OR WEST DITCH	---
---	GAS	---		---	SOUTH OR EAST DITCH	---	SOUTH OR EAST DITCH	---
---	EXISTING	---	LEGEND-PLAN	---	LEGEND-PROFILE	---	LEGEND-PROFILE	---
---	PROPOSED	---	PROPOSED	---	PROPOSED	---	PROPOSED	---

LOCATION APPROVED UNDERGROUND STRUCTURES

SUPV. U/G STRUCTURES COMMITTEE DATE

NOTE: LOCATION OF UNDERGROUND STRUCTURES AS SHOWN ARE BASED ON THE BEST INFORMATION AVAILABLE BUT NO GUARANTEE IS GIVEN THAT ALL EXISTING UTILITIES ARE SHOWN OR THAT THE GIVEN LOCATIONS ARE EXACT. CONFIRMATION OF EXISTENCE AND EXACT LOCATION OF ALL SERVICES MUST BE OBTAINED FROM THE INDIVIDUAL UTILITIES BEFORE PROCEEDING WITH CONSTRUCTION.

NO.	REVISIONS	DATE	BY

Stantec Consulting Ltd.

905 Waverley Street, Winnipeg, Manitoba
Tel 204-489-5900 Fax 204-453-9012

DESIGNED BY: J.K.H. CHECKED BY: W.B.
DRAWN BY: J.K.H. APPROVED BY: H.A.K.

HOR. SCALE: 1:250
VERTICAL: 1:50

RELEASED FOR CONSTRUCTION: _____

DATE: 07.05.09

ENGINEER'S SEAL

ORIGINAL SEALED BY H.A. KATZ P. ENG. 07.07.17

CONSULTANT DRAWING NO. C-203

THE CITY OF WINNIPEG
WATER AND WASTE DEPARTMENT
ENGINEERING DIVISION

HINDLEY AVENUE
3RD MH W OF FITZPATRICK RD TO
2ND MH W OF FITZPATRICK RD
STA 2+25 TO STA. 3+42
2007 SEWER RENEWALS BY CIPP LINING

SHEET 3 OF 19
CAD FILE DRAWING NUMBER 09720C-202685.dwg
CITY DRAWING NUMBER 06027