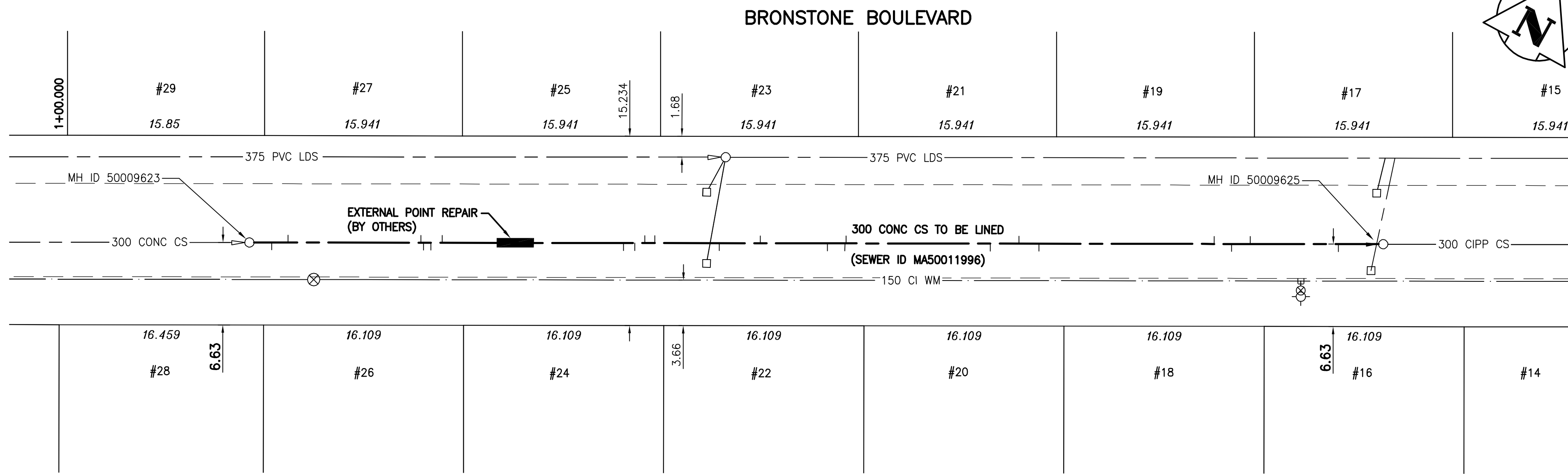


Sewer Junction Information (MA50011996)						
2ND MH WEST OF ST. MARY'S RD (MHID 50009623) TO 1ST MH WEST OF ST. MARY'S RD (MHID 50009625)						
Distance from 2ND MH WEST OF ST. MARY'S RD (MH 50009623) *						
1.8	EAST	150 MM DIA.	SOUTH	JN	CAPPED	
3.1	EAST	150 MM DIA.	NORTH	JN	CAPPED	
13.8	EAST	150 MM DIA.	NORTH	CNI	LIVE	
14.0	EAST	150 MM DIA.	SOUTH	JN	CAPPED	
14.6	EAST	150 MM DIA.	SOUTH	JN	LIVE	
15.5	EAST	150 MM DIA.	NORTH	JN	CAPPED	
30.1	EAST	150 MM DIA.	SOUTH	JN	LIVE	
31.0	EAST	150 MM DIA.	SOUTH	JN	CAPPED	
31.8	EAST	150 MM DIA.	NORTH	CNI	LIVE	
32.6	EAST	150 MM DIA.	NORTH	JN	CAPPED	
37.8	EAST	150 MM DIA.	SOUTH	CNI	DOUBLE SERVICE	
41.1	EAST	150 MM DIA.	NORTH	CNI	LIVE	
46.5	EAST	150 MM DIA.	SOUTH	JN	CAPPED	
47.9	EAST	150 MM DIA.	SOUTH	JN	LIVE	
48.0	EAST	150 MM DIA.	NORTH	JN	CAPPED	
59.6	EAST	150 MM DIA.	SOUTH	CNI	LIVE	
61.9	EAST	150 MM DIA.	NORTH	JN	LIVE	
63.5	EAST	150 MM DIA.	SOUTH	JN	CAPPED	
77.6	EAST	150 MM DIA.	NORTH	CNI	LIVE	
79.0	EAST	150 MM DIA.	SOUTH	JN	LIVE	
80.5	EAST	150 MM DIA.	NORTH	JN	CAPPED	
87.6	EAST	150 MM DIA.	SOUTH	CNI	LIVE	

* Information from Sewer Video Inspection



METRIC
WHOLE NUMBERS INDICATE MILLIMETRES
DECIMALIZED NUMBERS INDICATE METRES

WARNING
IF POWER EQUIPMENT OR EXPLOSIVES ARE TO BE USED FOR EXCAVATION ON THIS PROJECT THE CONTRACTOR MUST:
1) NOTIFY THE GAS COMPANY OF THE PROPOSED LOCATION OF EXCAVATION.
2) TAKE PRECAUTION TO AVOID DAMAGE TO GAS COMPANY INSTALLATIONS.
SEE PROVINCIAL REGULATION 140/92 FOR DETAILS

NOTE:
STATIONS ALONG N E OF HINDLEY AVE.

Bench Mark
378 (654378) - S.W. Cor. St. Mary's Rd. & Glenview Ave., Tbit. in 7.6m Conc. pile, 6m N. of N.L. of Glenview Ave. & 0.6m W. of W.L. of St. Mary's Rd.

APEGM
Certificate of Authorization
Stantec Consulting Ltd.
No. 1301 Expiry: April 30, 2008

BID OPPORTUNITY 449-2007

150 WM	WATERMAIN	150 WM	HYDRO	150 WM	WATERMAIN	150 WM
+	HYDRANT	+	M.T.S.	+	HYDRANT VALVE	+
o	VALVE	o	CONCRETE	o	LAND DRAINAGE SEWER	o
o	LAND DRAINAGE SEWER	o	ASPHALT	o	WASTE WATER SEWER	o
o	WASTE WATER SEWER	o	SIDEWALK	o	C PROFILE	o
o	MANHOLE	o	PROPERTY LINE	o	NORTH OR WEST GUTTER	o
o	CATCH BASIN	o	SURVEY BAR	o	SOUTH OR EAST GUTTER	o
o	CURB INLET	o	DITCH	o	NORTH OR WEST IP	o
o	JUNCTIONS	o	ELEVATION	o	SOUTH OR EAST IP	o
o	CULVERT	o	SIDEWALK RAMP	o	NORTH OR WEST DITCH	o
o	GAS	o		o	SOUTH OR EAST DITCH	o
o	LEGEND-PLAN	o	LEGEND-PLAN	o	LEGEND-PROFILE	o
o	PROPOSED	o	PROPOSED	o	PROPOSED	o
o	EXISTING	o	EXISTING	o	EXISTING	o

LOCATION APPROVED UNDERGROUND STRUCTURES	
SUPV. U/G STRUCTURES COMMITTEE	DATE
NOTE: LOCATION OF UNDERGROUND STRUCTURES AS SHOWN ARE BASED ON THE BEST INFORMATION AVAILABLE BUT NO GUARANTEE IS GIVEN THAT THE GIVEN LOCATIONS ARE EXACT. CONFIRMATION OF EXISTENCE AND EXACT LOCATION OF ALL SERVICES MUST BE OBTAINED FROM THE INDIVIDUAL UTILITIES BEFORE PROCEEDING WITH CONSTRUCTION.	
B.M. 54-011 ELEV. 231.851m	
DESIGNED BY J.K.H.	CHECKED BY W.B.
DRAWN BY J.K.H.	APPROVED BY H.A.K.
HOR. SCALE: 1:250	RELEASED FOR CONSTRUCTION:
VERTICAL: 1:50	DATE
NO. REVISIONS	DATE BY

Stantec Consulting Ltd.	
905 Waverley Street, Winnipeg, Manitoba Tel 204-489-5900 Fax 204-453-9012	
DESIGNED BY J.K.H.	CHECKED BY W.B.
DRAWN BY J.K.H.	APPROVED BY H.A.K.
HOR. SCALE: 1:250	RELEASED FOR CONSTRUCTION:
VERTICAL: 1:50	DATE
NO. REVISIONS	DATE BY

THE CITY OF WINNIPEG
WATER AND WASTE DEPARTMENT
ENGINEERING DIVISION

BRONSTONE BOULEVARD
2ND MH W OF ST. MARY'S RD TO 1ST MH W OF ST. MARYS RD
STA 1+13 TO STA. 2+05
2007 SEWER RENEWALS BY CIPP LINING

SHEET 1 OF 19
CAD FILE DRAWING NUMBER 09720C-201685.dwg
CITY DRAWING NUMBER 06025

CONSULTANT DRAWING NO. C-201