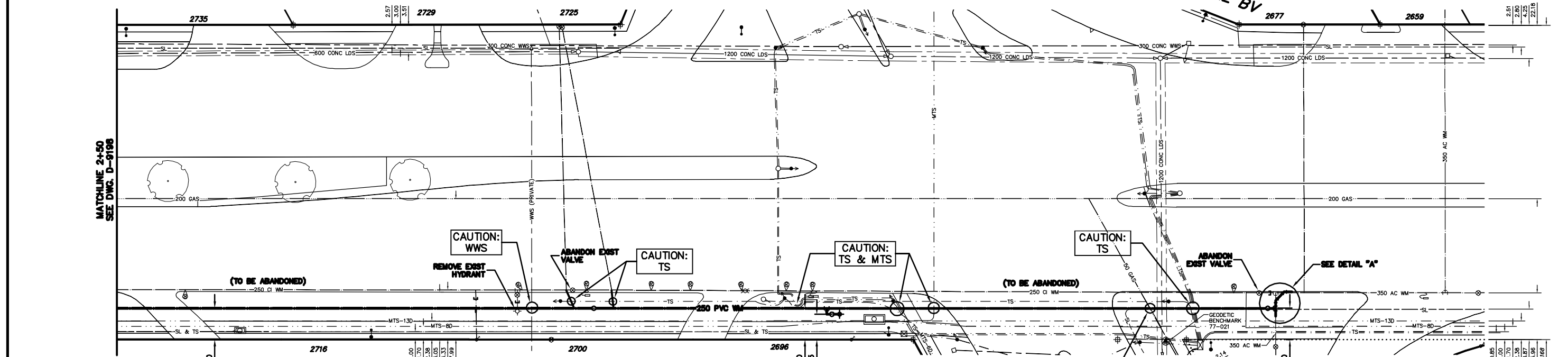


NOTE: CHAINAGES SHOWN ARE ALONG E \bar{r} OF PEMBINA HWY

PEMBINA HIGHWAY

BRAIDMORE BV



WATER SERVICE INFORMATION

ADDRESS	SIZE STREET	SIZE PROP	SHORT & LONG MEASUREMENT	CORP LOCATION	REMARKS
2747 PEMBINA HWY	*UNKNOWN	*UNKNOWN	3.79 NSL BLDG	1.23 S S/C	OCT 17/02/426 REQUIRES VACTOR S/BOX BENT OVER/AS
2741 PEMBINA HWY	38	38	8.15 NS BLDG CORN.	14.02 SSE CNR OF 2375 PEMBINA	SEWER IN TRENCH WITH WATER
2740 PEMBINA HWY	25	25	0.35 N OF "E" #2740	-	RENEW TO \bar{r} W/ 25 COPPER
2737 PEMBINA HWY	38	38	7.92 SNL BLDG	OPP S/C	-
2735 PEMBINA HWY	38	*UNKNOWN	5.49 SSL BLDG (ALSD)	REMARKS	SEP 19/95 PERMIT 27392 W & S CUT OFF
2735 PEMBINA HWY	38	38	9.45 W PAVMT	-	NOV 22/95 - AS PER 657 BLDG DEMOLISHED METER?
2735 PEMBINA HWY	*UNKNOWN	*UNKNOWN	2.31 S/NBL	-	REC'D C/T AUGUST 11/05 - OKCM
2729 PEMBINA HWY	38	38	22.49 NN BLDG CORN.	0.91 N OF S/C	STOP COOK FROM BUILDING 173'B
2729 PEMBINA HWY	38	38	22.49 NN BLDG CORN.	0.91 N OF S/C	JULY/03-DRAWING IN HOUSE FILE
2729 PEMBINA HWY	38	38	22.49 NN BLDG CORN.	0.91 N OF S/C	SERVICES CROSSED

WATER SERVICE INFORMATION

ADDRESS	SIZE STREET	SIZE PROP	SHORT & LONG MEASUREMENT	CORP LOCATION	REMARKS
2725 PEMBINA COMMERCIAL	38	38	11.29 NN BLDG CORN.	OPP S/C	-
2724 PEMBINA HWY COMMERCIAL	*UNKNOWN	*UNKNOWN	4.5 R/L HL	OPP S/C	SERV. OF 1ST PUBLIC LANE E OF PEMBINA
2716 PEMBINA HWY COMMERCIAL	25	25	5.94 L/L BLDG/L	0.2 S S/C	APR30/05 SPRKLR LEAK, NOT NOTIFIED, STILL ON/992/LM
2696 PEMBINA HWY COMMERCIAL	*UNKNOWN	*UNKNOWN	5.18 S HYD 1 S DALHOUSIE	-	10' LDS TO DALHOUSIE NORTH, 6" W/W & 1" WAT TO PEMBINA
2677 PEMBINA HWY COMMERCIAL	50	50	22.10 NN BLDG	OPP SC	AUG 31/94 - SEWER REPAIR PERMIT #26227
2677 PEMBINA HWY COMMERCIAL	50	50	22.10 NN BLDG	OPP SC	JAN 25/00 MTR #99229778 RDG 000000 INST- METER FOR IDEAL EYEWEAR/ MTR IS IN CHINESE FOOD PL./JAN 25/00
2700 PEMBINA HWY COMMERCIAL	38	38	5.92 NSL BLDG	-	MULT MTR/WZ SEE 2ND PANEL FOR MEAS OR SERV INFO/WZ
2700 PEMBINA HWY COMMERCIAL	38	38	46.29 SSL DALHOUSIE N/LEG	-	-

*SERVICES TO BE RENEWED TO \bar{r} ALL OTHERS TO BE RECONNECTED

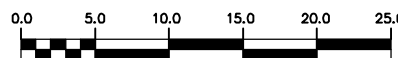
METRIC

WHOLE NUMBERS INDICATE MILLIMETRES
DECIMALIZED NUMBERS INDICATE METRES

NOTE: ALL VALVES TO BE INSTALLED COUNTERCLOCKWISE TO CLOSE

FOR CONSTRUCTION NOTES:
SEE DRAWING D-9198

WARNING
IF POWER EQUIPMENT OR EXPLOSIVES ARE TO BE USED FOR EXCAVATION ON THIS PROJECT THE CONTRACTOR MUST:
1) NOTIFY THE GAS COMPANY OF THE PROPOSED LOCATION OF EXCAVATION.
2) TAKE PRECAUTION TO AVOID DAMAGE TO GAS COMPANY INSTALLATIONS.
SEE PROVINCIAL REGULATION 210/72 FOR DETAILS



200 WM	WATERMAIN	200 WM	SL, HYDRO	150 WM	WATERMAIN	150 WM
⊕	HYDRANT	⊕	MTS	⊕	HYDRANT	⊕
⊙	VALVE	⊙	TRAFFIC SIGNALS	⊙	VALVE	⊙
525 LDS	LAND DRAINAGE SEWER	525 LDS	GAS	50 GAS	300 LDS	LAND DRAINAGE SEWER
375 WWS	WASTEWATER SEWER	375 WWS	SURVEY BAR	250 WWS	250 WWS	WASTEWATER SEWER
○	MANHOLE	○	FENCE	×	⊕	PROFILE
□	CATCH BASIN	□	POLE - HYDRO, MTS	⊕	⊕	GROUND ABOVE PIPE
▽	CURB INLET	▽	CURB STOP	⊕	⊕	? DITCH (NORTH & WEST)
∇	REDUCER	∇	GUY ANCHOR	∇	∇	? DITCH (SOUTH & EAST)
×	COUPLER	×	LIGHT STANDARD	×	×	GUTTER (NORTH & WEST)
⊕	ANODE	⊕	TREE	⊕	⊕	GUTTER (SOUTH & EAST)
EXISTING	LEGEND-PLAN	PROPOSED	EXISTING	LEGEND-PLAN	PROPOSED	EXISTING
EXISTING	LEGEND-PROFILE	PROPOSED	EXISTING	LEGEND-PROFILE	PROPOSED	EXISTING

LOCATION APPROVED	B.M. ELEV.	FIELD BOOK #
UNDERGROUND STRUCTURES		
SUPV. U/G STRUCTURES COMMITTEE		
DATE		
NO. REVISIONS	DATE	BY

CITY OF WINNIPEG
WATER AND WASTE
ENGINEERING DIVISION

DESIGNED BY: NC
CHECKED BY: TW
DRAWN BY: CJH
APPROVED BY: KZ
HOR. SCALE: 1:250
VERTICAL: 1:50
DATE: 2007 06 15

ENGINEER'S SEAL
ORIGINAL SIGNED BY K.R. ZUREK 07/06/15

BID OPPORTUNITY 426-2007
FILENAME: D-9199.dwg
PLOT DATE: 2007 06 14

THE CITY OF WINNIPEG
WATER AND WASTE DEPARTMENT

2007 WATERMAIN RENEWALS

PEMBINA HIGHWAY
125.0 N OF GREENCREST AVENUE TO DALHOUSIE DRIVE (N LEG)

SHEET **6** OF **10**
CITY DRAWING NUMBER **D-9199**