

WATER SERVICE INFORMATION						
ADDRESS	SIZE(mm) & TYPE (STREET)	SIZE(mm) & TYPE (PROP)	SHORT & LONG MEASUREMENT	CORP. LOCATION		
1025A CLARENCE AVE RESIDENTIAL	20 COPPER	20 COPPER	3.66 EWL HSE	3.20 W OF S/C	DBL. SERV. W/1025	
1027 CLARENCE AVE RESIDENTIAL	20 COPPER	20 COPPER	122.74 EEL HUDSON	0.57 E OF S/C	RENEW TO 2" W/ 20 COPPER	
1028 CLARENCE AVE RESIDENTIAL	20 COPPER	20 COPPER	111.94 EEL HUDSON	0.16 W OF S/C		
1029 CLARENCE AVE RESIDENTIAL	20 COPPER	20 COPPER	8.04 EWL HSE	0.16 W OF S/C	RENEW TO 2" W/ 20 COPPER	
1031 CLARENCE AVE RESIDENTIAL	20 COPPER	20 COPPER	134.65 EEL HUDSON	7.15 W OF S/C		
1032 CLARENCE AVE RESIDENTIAL	20 COPPER	20 COPPER	0.40 WWL HSE			
1033 CLARENCE AVE RESIDENTIAL	20 COPPER	20 COPPER	99.75 EEL HUDSON			
1034 CLARENCE AVE RESIDENTIAL	20 COPPER	20 COPPER	1.81 WEL HSE			
1035 CLARENCE AVE RESIDENTIAL	20 COPPER	20 COPPER	120.30 EEL HUDSON	0.85 E OF S/C		
1036 CLARENCE AVE RESIDENTIAL	20 COPPER	20 COPPER	5.73 EWL HSE			
1038 CLARENCE AVE RESIDENTIAL	20 COPPER	20 COPPER	79.20 EEL HUDSON			
1039 CLARENCE AVE RESIDENTIAL	20 COPPER	20 COPPER	OPP EL HSE	1.90 E OF S/C	RENEW TO 2" W/ 20 COPPER	
1040 CLARENCE AVE RESIDENTIAL	20 COPPER	20 COPPER	105.23 EEL HUDSON	2.43 E OF S/C		
1042 CLARENCE AVE RESIDENTIAL	20 COPPER	20 COPPER	68.93 EEL HUDSON	1.44 E OF S/C		
1043 CLARENCE AVE RESIDENTIAL	20 COPPER	20 COPPER	2.65 WEL HSE			
1044 CLARENCE AVE RESIDENTIAL	20 COPPER	20 COPPER	89.70 EEL HUDSON			
1046 CLARENCE AVE RESIDENTIAL	20 COPPER	20 COPPER	1.77 WEL HSE	OPP S/C		
1047 CLARENCE AVE RESIDENTIAL	20 COPPER	20 COPPER	76.70 EEL HUDSON			
1048 CLARENCE AVE RESIDENTIAL	20 COPPER	20 COPPER	0.80 EEL HSE			
1049 CLARENCE AVE RESIDENTIAL	20 COPPER	20 COPPER	50.37 EEL HUDSON			
1046 CLARENCE AVE RESIDENTIAL	20 COPPER	20 COPPER	3.29 EWL HSE	1.97 E OF S/C		
1047 CLARENCE AVE RESIDENTIAL	20 COPPER	20 COPPER	60.21 EEL HUDSON	0.84 W OF S/C		
1048 CLARENCE AVE RESIDENTIAL	20 COPPER	20 COPPER	0.96 WEL HSE			
1049 CLARENCE AVE RESIDENTIAL	20 COPPER	20 COPPER	33.86 EEL HUDSON	0.43 E OF S/C		
1049 CLARENCE AVE RESIDENTIAL	20 COPPER	20 COPPER	1.20 WEL HSE			
1050 CLARENCE AVE RESIDENTIAL	20 COPPER	20 COPPER	53.44 EEL HUDSON			
1054 CLARENCE AVE RESIDENTIAL	20 COPPER	20 COPPER	3.72 WEL HSE	1.55 E OF S/C		
1054 CLARENCE AVE RESIDENTIAL	20 COPPER	20 COPPER	16.17 EEL HUDSON			
1054 CLARENCE AVE RESIDENTIAL	20 COPPER	20 COPPER	3.0 EWL HSE	1.45 E OF S/C		
1054 CLARENCE AVE RESIDENTIAL	20 COPPER	20 COPPER	43.63 EEL HUDSON	0.25 E OF S/C		
1054 CLARENCE AVE RESIDENTIAL	20 COPPER	20 COPPER	2.63 EWL HSE			
1054 CLARENCE AVE RESIDENTIAL	20 COPPER	20 COPPER	29.07 EEL HUDSON			

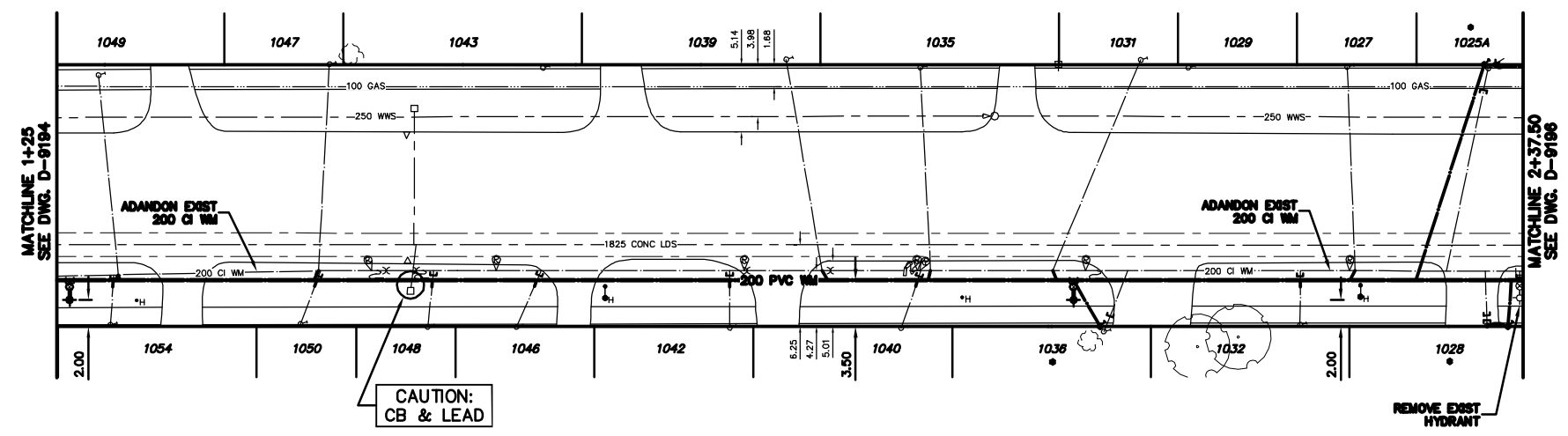
* SERVICES TO BE RENEWED TO 2" ALL OTHERS TO BE RECONNECTED

NOTE: CHAINAGES SHOWN ARE ALONG S R OF CLARENCE AVE

CLARENCE AVENUE



- CONSTRUCTION NOTES**
1. EXPOSE EXISTING WATERMAIN & CONFIRM INVERTS PRIOR TO CONSTRUCTION.
 2. CONFIRM LOCATION OF ALL SERVICES IN THE FIELD.
 3. INSTALL WATERMAIN BY TRENCHLESS METHODS.
 4. TRENCHES AND EXCAVATIONS WITHIN 1 METRE OF A PAVED AREA INCLUDING SIDEWALKS SHALL BE CLASS 3 BACKFILL.
 5. ALL MATERIALS SHALL CONFORM TO THE CITY OF WINNIPEG STANDARD CONSTRUCTION SPECIFICATIONS.
 6. MINIMUM COVER TO TOP OF WATERMAIN SHALL BE 2.4 m.
 7. REPLACE ALL EXISTING LEAD SERVICES FROM PROPOSED WATERMAIN TO R.
 8. NOTIFY ALL AFFECTED RESIDENTS AND BUSINESSES 24 HOURS IN ADVANCE OF ANY WATER SHUTDOWNS OR DISRUPTION OF SERVICE.
 9. EXCAVATIONS TO BE LOCATED AWAY FROM EXISTING TREE'S.



METRIC
WHOLE NUMBERS INDICATE MILLIMETRES
DECIMALIZED NUMBERS INDICATE METRES

NOTE: ALL VALVES TO BE INSTALLED COUNTERCLOCKWISE TO CLOSE

WARNING

IF POWER EQUIPMENT OR EXPLOSIVES ARE TO BE USED FOR EXCAVATION ON THIS PROJECT THE CONTRACTOR MUST:

- 1) NOTIFY THE GAS COMPANY OF THE PROPOSED LOCATION OF EXCAVATION.
- 2) TAKE PRECAUTION TO AVOID DAMAGE TO GAS COMPANY INSTALLATIONS.

SEE PROVINCIAL REGULATION 210/72 FOR DETAILS



200 WM	WATERMAIN	200 WM	SL, HYDRO	150 WM	WATERMAIN	150 WM
⊕	HYDRANT	⊕	MTS	⊕	HYDRANT	⊕
⊙	VALVE	⊙	TRAFFIC SIGNALS	⊙	VALVE	⊙
525 LDS	LAND DRAINAGE SEWER	525 LDS	GAS	300 LDS	LAND DRAINAGE SEWER	300 LDS
375 WWS	WASTEWATER SEWER	375 WWS	SURVEY BAR	250 WWS	WASTEWATER SEWER	250 WWS
○	MANHOLE	○	FENCE	⊕	PROFILE	⊕
□	CATCH BASIN	□	POLE - HYDRO, MTS	⊕	GROUND ABOVE PIPE	⊕
▽	CURB INLET	▽	CURB STOP	⊕	? DITCH (NORTH & WEST)	⊕
◁	REDUCER	◁	GUY ANCHOR	⊕	? DITCH (SOUTH & EAST)	⊕
X	COUPLER	X	LIGHT STANDARD	⊕	GUTTER (NORTH & WEST)	⊕
⊕	ANODE	⊕	TREE	⊕	GUTTER (SOUTH & EAST)	⊕
EXISTING	LEGEND-PLAN	PROPOSED	EXISTING	LEGEND-PLAN	PROPOSED	EXISTING

LOCATION APPROVED UNDERGROUND STRUCTURES	B.M. ELEV.	FIELD BOOK #:
SUPPLY U/G STRUCTURES COMMITTEE	DATE	
NOTE: LOCATION OF UNDERGROUND STRUCTURES AS SHOWN ARE BASED ON THE BEST INFORMATION AVAILABLE BUT NO GUARANTEE IS GIVEN THAT THE GIVEN LOCATIONS ARE EXACT. CONFIRMATION OF EXISTENCE AND EXACT LOCATION OF ALL SERVICES MUST BE OBTAINED FROM THE INDIVIDUAL UTILITIES BEFORE PROCEEDING WITH CONSTRUCTION.		
NO. REVISIONS	DATE	BY

CITY OF WINNIPEG
WATER AND WASTE
ENGINEERING DIVISION

DESIGNED BY: NC
CHECKED BY: TW

DRAWN BY: CJH
APPROVED BY: KZ

HOR. SCALE: 1:250
VERTICAL: 1:50

RELEASED FOR CONSTRUCTION

DATE: 2007 06 15

ENGINEER'S SEAL

ORIGINAL SIGNED BY K.R. ZUREK 07/06/15

BID OPPORTUNITY 426-2007
FILENAME: D-9195.dwg
PLOT DATE: 2007 06 14

THE CITY OF WINNIPEG
WATER AND WASTE DEPARTMENT

2007 WATERMAIN RENEWALS

CLARENCE AVENUE
25.0 E OF EL HUDSON STREET TO
137.50 E OF EL HUDSON STREET

SHEET 2 OF 10
CITY DRAWING NUMBER
D-9195