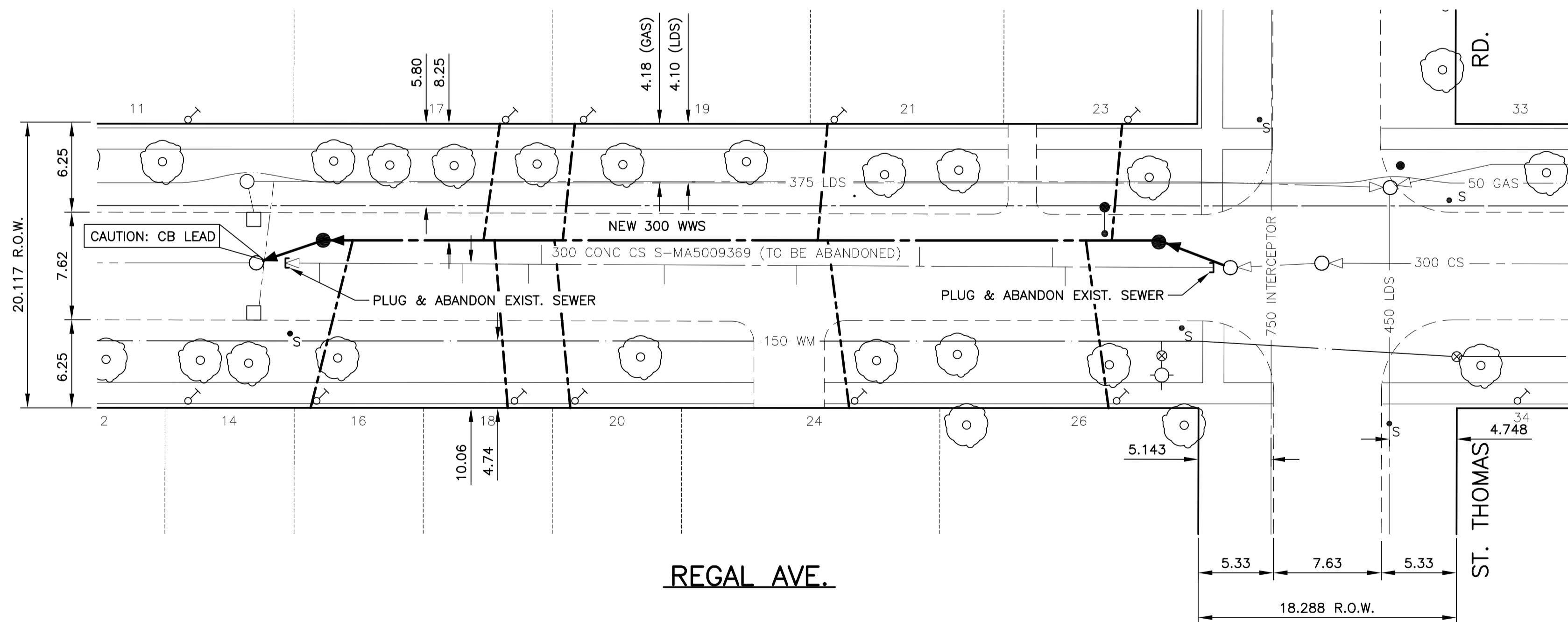


CONSTRUCTION NOTES:

1. ALL PVC PIPE SHALL HAVE CLASS B-TYPE 2 BEDDING AND ALL CONCRETE PIPE SHALL HAVE CLASS B-SAND BEDDING.
2. SEWER TO BE RENEWED BY TRENCHLESS METHODS.
3. CONFIRM THE LOCATION OF ALL SEWER SERVICES.
4. RENEW SEWER SERVICES TO PROPERTY LINE.
5. BACKFILL UNDER PAVEMENT, IN SIDEWALKS, & WITHIN 1.0 OF PAVEMENT TO BE CLASS 3.
6. BACKFILL IN BOULEVARD TO BE CLASS 5.
7. CATCHBASIN LEADS TO BE INSTALLED AT MIN. 1.0% SLOPE OR AS DIRECTED BY CONTRACT ADMINISTRATOR.
8. EXCAVATIONS TO BE LOCATED AWAY FROM EXISTING TREES

NOTE: CHAINAGES SHOWN ARE ALONG NORTH PL REGAL AVE.



SEWER SERVICE INFORMATION (S-MA5009369) *	
DISTANCE FROM MH AT ST. THOMAS RD WPL (S-MH50007757)	
11.7 W	JUNCTION S
12.6 W	JUNCTION N
22.0 W	JUNCTION N
30.7 W	JUNCTION S
40.1 W	JUNCTION S
48.8 W	JUNCTION N
49.7 W	JUNCTION S
54.4 W	JUNCTION S
55.2 W	JUNCTION N
64.5 W	JUNCTION S

* - INFORMATION FROM SEWER VIDEO INSPECTION

EXISTING SEWER SERVICE LOCATION RECORDS		
ADDRESS	SIZE/TYPE	SERVICE LOCATION AT PL
NO RECORDS	INFO NOT AVAILABLE	INFO NOT AVAILABLE

* LOCATION OF SEWER SERVICE AT ? IS ASSUMED

WARNING

IF POWER EQUIPMENT OR EXPLOSIVES ARE TO BE USED FOR EXCAVATION ON THIS PROJECT THE CONTRACTOR MUST:

1. NOTIFY THE GAS COMPANY OF THE PROPOSED LOCATION OF EXCAVATION.
2. TAKE PRECAUTION TO AVOID DAMAGE TO GAS COMPANY INSTALLATIONS SEE PROVINCIAL REGULATION 210/72 FOR DETAILS

METRIC

WHOLE NUMBERS INDICATE MILLIMETRES
DECIMALIZED NUMBERS INDICATE METRES



150 mm W.M.	WATERMAIN	150 mm W.M.	HYDRO	150 mm W.M.	WATERMAIN	150 mm W.M.	WATERMAIN
300 mm L.D.S.	LAND DRAINAGE SEWER	300 mm L.D.S.	M.T.S.	300 mm L.D.S.	LAND DRAINAGE SEWER	300 mm L.D.S.	LAND DRAINAGE SEWER
250 mm W.W.S.	WASTE WATER SEWER	250 mm W.W.S.	CONCRETE ASPHALT	250 mm W.W.S.	WASTE WATER SEWER	250 mm W.W.S.	WASTE WATER SEWER
○	MANHOLE	●	PROPERTY LINE	○	MANHOLE	○	MANHOLE
□	CATCH BASIN	■	SURVEY BAR	□	CATCH BASIN	□	CATCH BASIN
▽	CURB INLET	▼	SERVICE VALVE	▽	CURB INLET	▽	CURB INLET
+	JUNCTIONS	+	I.P.S.	+	JUNCTIONS	+	JUNCTIONS
—	CULVERT	—	BUILDING	—	CULVERT	—	CULVERT
—	GAS	—		—	GAS	—	GAS
EXISTING	LEGEND-PLAN	PROPOSED	EXISTING	LEGEND-PLAN	PROPOSED	EXISTING	LEGEND-PROFILE

UNDERGROUND STRUCTURES	B.M. ELEV.	DESIGNED BY	CLP
SUPV. U/G STRUCTURES COMMITTEE	DATE	DRAWN BY	SKB
NOTE:		CHECKED BY	SCC
LOCATION OF UNDERGROUND STRUCTURES AS SHOWN ARE BASED ON THE BEST INFORMATION AVAILABLE. BUT NO GUARANTEE IS GIVEN THAT ALL EXISTING UTILITIES ARE SHOWN OR THAT THE GIVEN LOCATIONS ARE EXACT. CONFIRMATION OF EXISTENCE AND EXACT LOCATION OF ALL SERVICES MUST BE OBTAINED FROM THE INDIVIDUAL UTILITIES BEFORE PROCEEDING WITH CONSTRUCTION.		APPROVED BY	
		HOR. SCALE	1 : 250
		VERTICAL	1 : 50
1	ISSUED FOR TENDER	06/28/07	SCC
NO.	REVISIONS	DATE	BY
		JUNE 27, 2007	

RELEASED FOR CONSTRUCTION ORIGINAL SIGNED BY KAS ZUREK, P. Eng.		CONSULTANT PROJECT NO. 07-7471-1000	

THE CITY OF WINNIPEG
WATER AND WASTE DEPARTMENT

2007 SEWER RENEWALS
REGAL AVENUE
MH AT ST. THOMAS RD. WPL TO
1ST MH W OF ST. THOMAS RD.

CITY DRAWING NUMBER
06074
SHEET 6 OF 13

BID OPPORTUNITY
422-2007