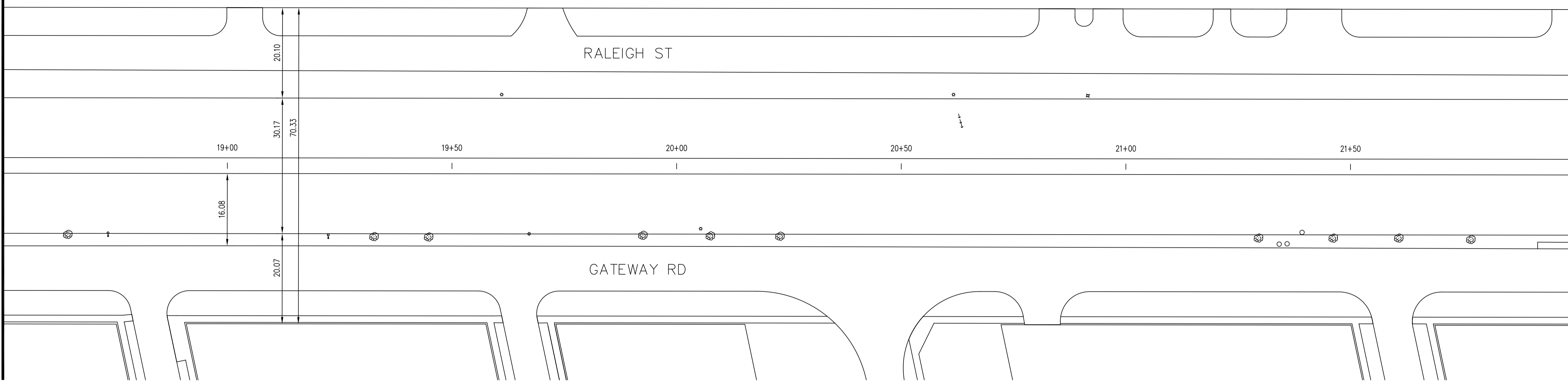


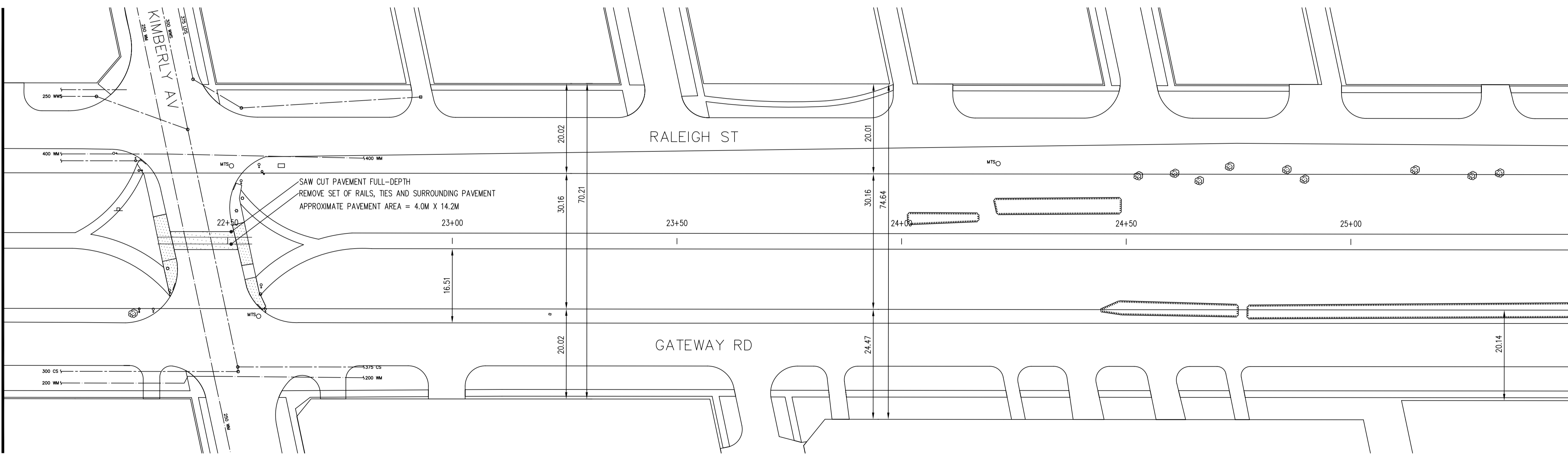
MATCHLINE STA 18+50

MATCHLINE STA 22+00



MATCHLINE STA 22+00

MATCHLINE STA 25+50



- CONSTRUCTION NOTES**
- 1) CURB REPLACEMENT AS DIRECTED BY THE CONTRACT ADMINISTRATOR
 - 2) ALL STREET RADIUS CURB UNDER 15M RADIUS SHALL BE REPLACED AS MODIFIED OR AS DIRECTED BY THE CONTRACT ADMINISTRATOR
 - 3) PAVEMENT REPAIRS SHOWN ARE ONLY A REPRESENTATIVE SAMPLE OF THE TENDERED QUANTITIES
 - 4) ASPHALT TIE-INS ON APPROACHES TO BE DETERMINED IN THE FIELD BY THE CONTRACT ADMINISTRATOR.
 - 5) ALL BULLNOSES TO HAVE SLOPED FACE.

WARNING

IF POWER EQUIPMENT OR EXPLOSIVES ARE TO BE USED FOR EXCAVATION ON THIS PROJECT THE CONTRACTOR MUST:

- 1) OBTAIN CLEARANCE FROM THE GAS UTILITY PRIOR TO EXCAVATION.
- 2) TAKE PRECAUTION TO AVOID DAMAGE TO GAS UTILITY INSTALLATIONS.

SEE PROVINCIAL REGULATION 210/72 FOR DETAILS

METRIC
WHOLE NUMBERS INDICATE MILLIMETRES
DECIMALIZED NUMBERS INDICATE METRES

BID OPPORTUNITY NO. 419-2007

150 mm WM	WATERMAIN	150 mm WM	HYDRO	GUY WIRE	LOCATION APPROVED	B.M.	GBM 27-015
Hydrant	HYDRANT VALVE	MTS	MTS GAS	O.L.S.	UNDERGROUND STRUCTURES	Elev.	230.527
Chain Link Fence	CHAIN LINK FENCE	Asphalt Pavement	ASPHALT PAVEMENT	Billboard Sign		DESIGNED BY	B.K.
Wood Bollard	WOOD BOLLARD	Curb Renewal	CURB RENEWAL	Bush		CHECKED BY	G.C. / B.K.
Concrete Sidewalk	CONCRETE SIDEWALK	Elevations	ELEVATIONS	Foot Path		DRAWN BY	R.M. / G.C.
Manhole	MANHOLE	Property Line	PROPERTY LINE			HOR. SCALE:	1 : 500
Catch Basin	CATCH BASIN	Survey Bar	SURVEY BAR			VERTICAL:	1 : 5
Curb Inlet	CURB INLET	Geodetic Bench Mark	GEODETIC BENCH MARK			DATE	2007/04/18
Hydro Pole	HYDRO POLE	Ramp Curb	RAMP CURB			NO. REVISIONS	
Traffic Signal Pole	TRAFFIC SIGNAL POLE	Guard Rail	GUARD RAIL			DATE	
EXISTING	LEGEND - PLAN	PROPOSED	EXISTING	LEGEND - PLAN	PROPOSED	DATE	

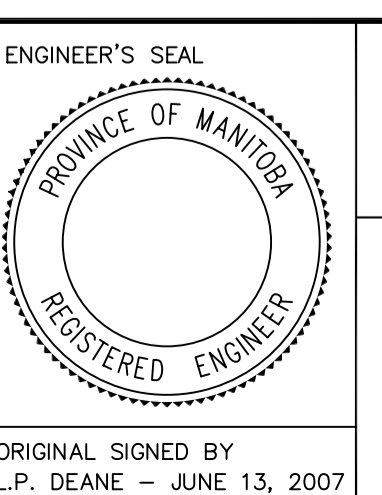
LOCATION APPROVED
UNDERGROUND STRUCTURES

SUPR. U/G STRUCTURES DATE COMMITTEE

NOTE:
LOCATION OF UNDERGROUND STRUCTURES AS SHOWN ARE BASED ON THE BEST INFORMATION AVAILABLE. BUT NO GUARANTEE IS GIVEN THAT ALL EXISTING UTILITIES ARE SHOWN OR THAT THE GIVEN LOCATIONS ARE EXACT. CONFIRMATION OF EXISTENCE AND EXACT LOCATION OF ALL SERVICES MUST BE OBTAINED FROM THE INDIVIDUAL UTILITIES BEFORE PROCEEDING WITH CONSTRUCTION.

DESIGNED BY	B.K.	CHECKED BY	G.C. / B.K.
DRAWN BY	R.M. / G.C.	APPROVED BY	B.K.
DATE	2007/04/18		

TRANSPORTATION ENGINEERING DIVISION
TECHNOLOGY SERVICES BRANCH
106 - 1155 PACIFIC AVE



THE CITY OF WINNIPEG
PUBLIC WORKS DEPARTMENT

MARCONI TRAIL
FROM HERBERT AVENUE TO SPRINGFIELD ROAD
PEDESTRIAN CYCLE FACILITY AND ASSOCIATED WORKS
FROM STA. 18+50 TO STA. 25+50

CITY DRAWING NUMBER SE-07-22
SHEET 4 OF 7

4