

- CONSTRUCTION NOTES**
- 1) CURB REPLACEMENT AS DIRECTED BY THE CONTRACT ADMINISTRATOR
 - 2) ALL STREET RADIUS CURB UNDER 15M RADIUS SHALL BE REPLACED AS MODIFIED OR AS DIRECTED BY THE CONTRACT ADMINISTRATOR
 - 3) PAVEMENT REPAIRS SHOWN ARE ONLY A REPRESENTATIVE SAMPLE OF THE TENDERED QUANTITIES
 - 4) ASPHALT TIE-INS ON APPROACHES TO BE DETERMINED IN THE FIELD BY THE CONTRACT ADMINISTRATOR
 - 5) ALL BULLNOSES TO HAVE SLOPED FACE.

WARNING

IF POWER EQUIPMENT OR EXPLOSIVES ARE TO BE USED FOR EXCAVATION ON THIS PROJECT THE CONTRACTOR MUST:

- 1) OBTAIN CLEARANCE FROM THE GAS UTILITY PRIOR TO EXCAVATION.
- 2) TAKE PRECAUTION TO AVOID DAMAGE TO GAS UTILITY INSTALLATIONS.

SEE PROVINCIAL REGULATION 210/72 FOR DETAILS

METRIC
WHOLE NUMBERS INDICATE MILLIMETRES
DECIMALIZED NUMBERS INDICATE METRES

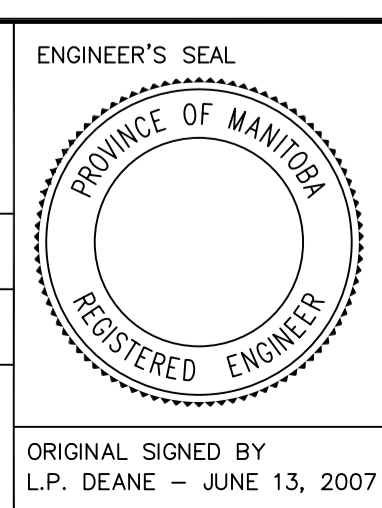
BID OPPORTUNITY NO. 419-2007

| | | | | | | | |
|-----------|---------------------|-----------|---------------------|----------------|------------------------|----------|---------------|
| 150 mm WM | WATERMAIN | 150 mm WM | HYDRO | GUY WIRE | LOCATION APPROVED | B.M. | GBM 27-015 |
| ⊕ | HYDRANT | ⊕ | MTS | O.L.S. | UNDERGROUND STRUCTURES | ELEV. | 230.527 |
| ⊖ | VALVE | ⊖ | GAS | BILLBOARD SIGN | | | |
| — — — | CHAIN LINK FENCE | — — — | ASPHALT PAVEMENT | BUSH | | | |
| — — — | WOOD BOLLARD | — — — | CURB RENEWAL | FOOT PATH | | | |
| — — — | CONCRETE SIDEWALK | 231.000 | ELEVATIONS | | | | |
| ○ | MANHOLE | ● | PROPERTY LINE | | | | |
| □ | CATCH BASIN | ■ | SURVEY BAR | | | | |
| △ | CURB INLET | ▲ | GEODETIC BENCH MARK | | | | |
| ☆ | HYDRO POLE | — — — | RAMP CURB | | | | |
| ⊕ | TRAFFIC SIGNAL POLE | — — — | GUARD RAIL | | | | |
| EXISTING | LEGEND — PLAN | PROPOSED | EXISTING | LEGEND — PLAN | PROPOSED | EXISTING | LEGEND — PLAN |

NOTE:
LOCATION OF UNDERGROUND STRUCTURES AS SHOWN ARE BASED ON THE BEST INFORMATION AVAILABLE. BUT NO GUARANTEE IS GIVEN THAT ALL EXISTING UTILITIES ARE SHOWN OR THAT THE GIVEN LOCATIONS ARE EXACT. CONFIRMATION OF EXISTENCE AND EXACT LOCATION OF ALL SERVICES MUST BE OBTAINED FROM THE INDIVIDUAL UTILITIES BEFORE PROCEEDING WITH CONSTRUCTION.

| | | | |
|-------------|-------------|-------------|-------------|
| DESIGNED BY | B.K. | CHECKED BY | G.C. / B.K. |
| DRAWN BY | R.M. / G.C. | APPROVED BY | B.K. |
| HOR. SCALE: | 1 : 500 | DATE | 2007/04/18 |
| VERTICAL: | 1 : 5 | | |
| NO. | REVISIONS | DATE | BY |

**TRANSPORTATION ENGINEERING DIVISION
TECHNOLOGY SERVICES BRANCH
106 - 1155 PACIFIC AVE**



**THE CITY OF WINNIPEG
PUBLIC WORKS DEPARTMENT**

MARCONI TRAIL
FROM HERBERT AVENUE TO SPRINGFIELD ROAD
PEDESTRIAN CYCLE FACILITY AND ASSOCIATED WORKS
FROM STA. 1+00 TO STA. 7+50

CITY DRAWING NUMBER SE-07-19
SHEET 1 OF 7
1