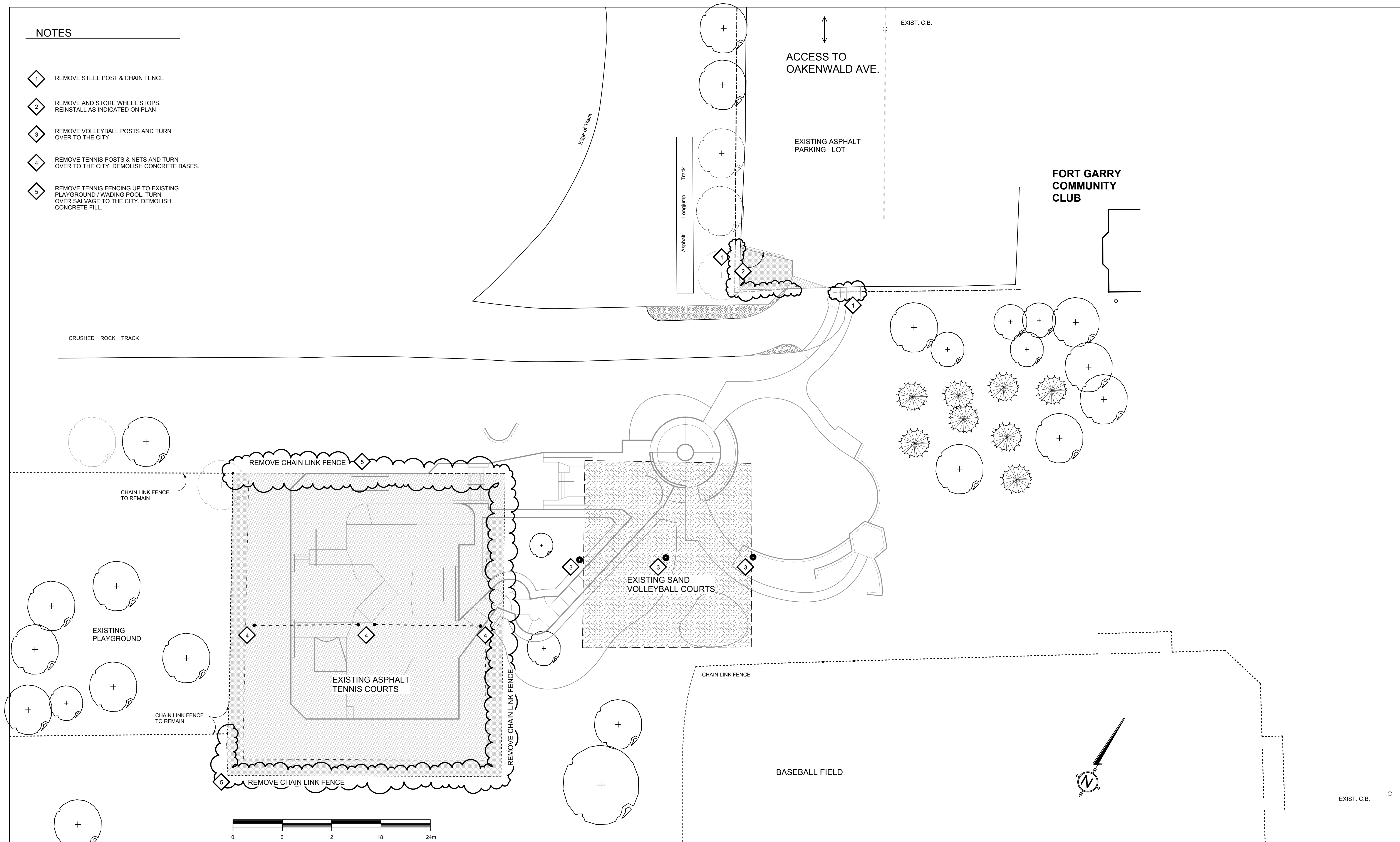


NOTES

- 1 REMOVE STEEL POST & CHAIN FENCE
- 2 REMOVE AND STORE WHEEL STOPS. REINSTALL AS INDICATED ON PLAN
- 3 REMOVE VOLLEYBALL POSTS AND TURN OVER TO THE CITY.
- 4 REMOVE TENNIS POSTS & NETS AND TURN OVER TO THE CITY. DEMOLISH CONCRETE BASES.
- 5 REMOVE TENNIS FENCING UP TO EXISTING PLAYGROUND / WADING POOL. TURN OVER SALVAGE TO THE CITY. DEMOLISH CONCRETE FILL.



LEGEND

- REMOVE EXISTING ASPHALT SURFACE.
- SALVAGE EXISTING SAND FOR SITE WORK
- REMOVE EXISTING ASPHALT SURFACE. SALVAGE GRANULAR BASE AND REPLACE WITH COMMON FILL OR SCARIFY PRIOR TO PLACING TOPSOIL.
- REMOVE AND SALVAGE GRANULAR BASE FOR SITE WORK

HILDERMAN THOMAS FRANK CRAM
 Landscape Architecture • Planning
 500 - 115 Bannatyne Avenue East, Winnipeg, MB R3B 0R3
 Phone: 204.944.9907 Fax: 204.957.1467

SPECTRUM SKATEPARK CREATIONS LTD.

| B.M. ELEV. | YY.MM.DD |
|------------|----------|
| | |
| | |
| | |
| | |
| | |
| | |
| | |
| | |
| | |
| | |
| | |

| | |
|--------------------|--------------|
| DESIGNED: AB | DRAWN: AB |
| SCALE: 1:200 | APPROVED: GM |
| ACCEPTED BY: | |
| DATE: MAY 30, 2007 | |

the manitoba association
 of landscape architects
 City of Winnipeg
 No. 81

THE CITY OF WINNIPEG
 PUBLIC WORKS DEPARTMENT
 ENGINEERING DIVISION

**FORT GARRY COMMUNITY CENTRE
 SKATEBOARD PARK**

DEMOLITION PLAN

CITY DRAWING NUMBER
 SHEET 1 OF 5

L-1

07-014 site plan rev'd