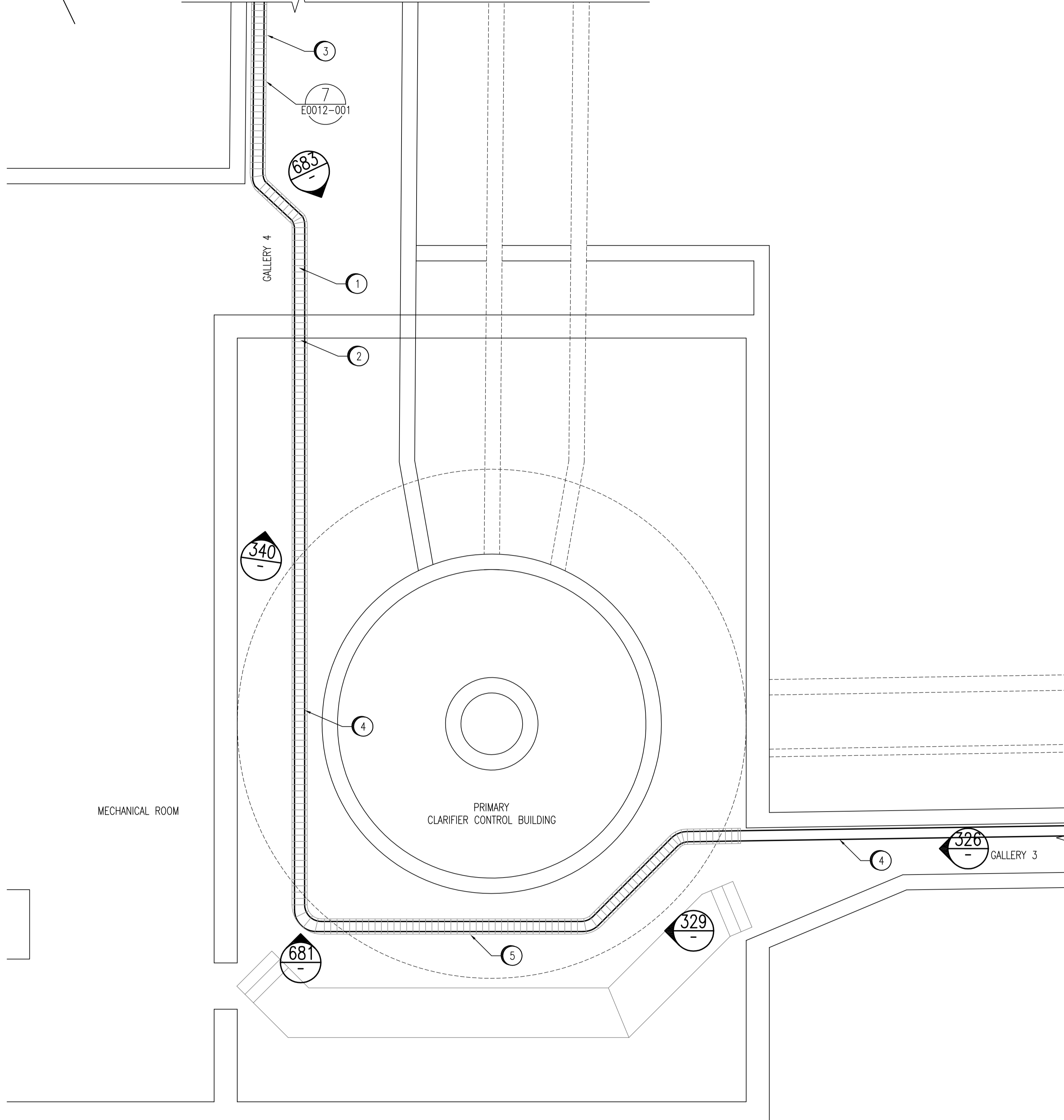
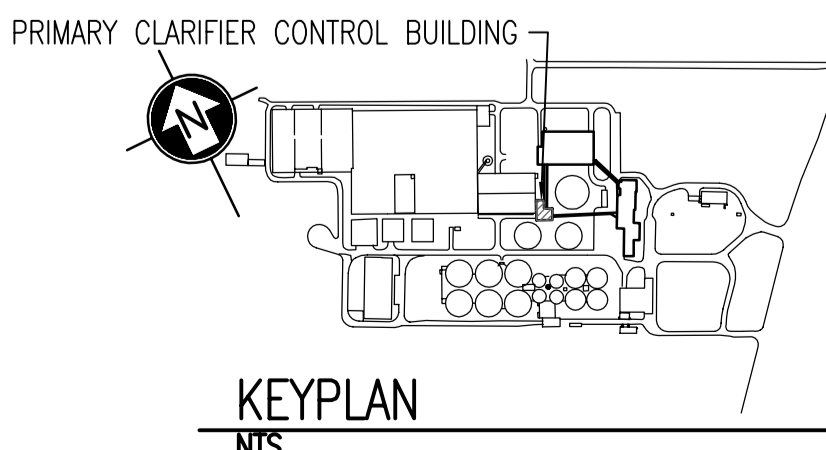


CONT'D ON DWG. 1-0101M-A-E0011-004



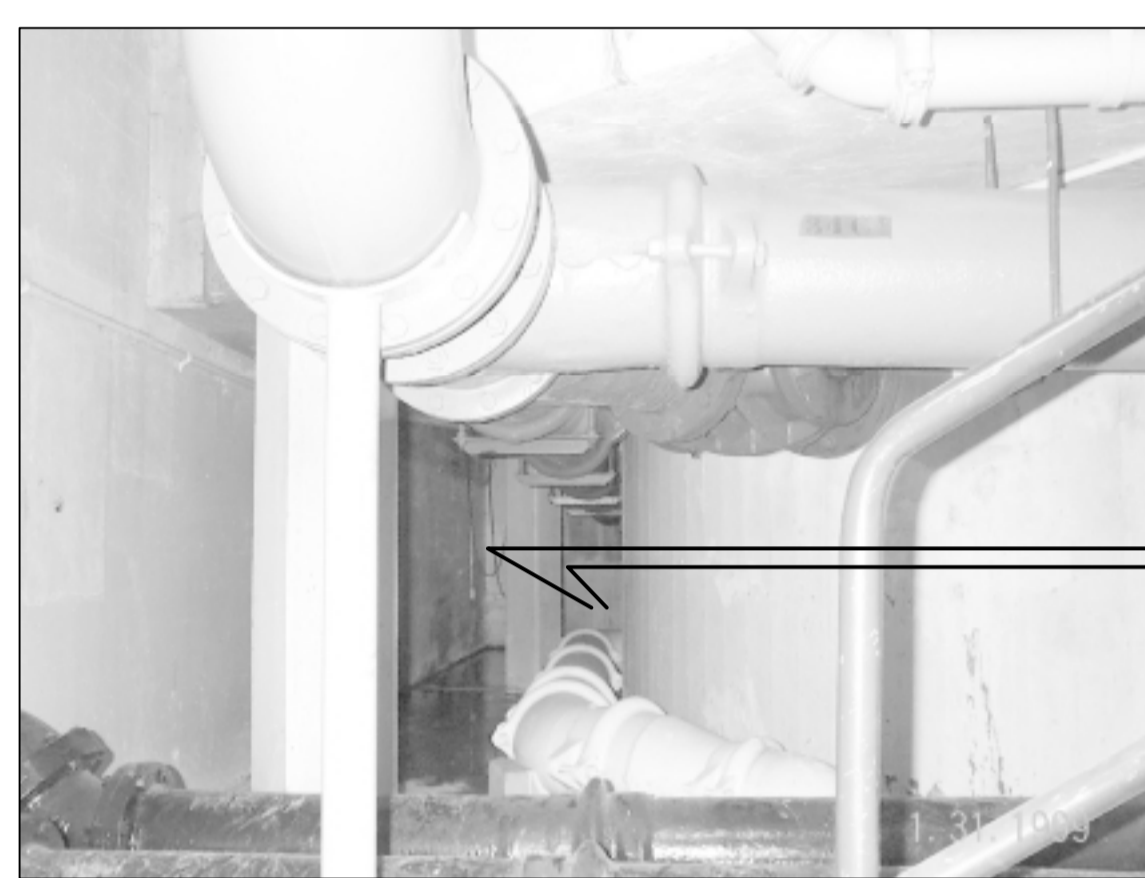
3 CLARIFIER CONTROL BUILDING PLAN
E010-001 1:50



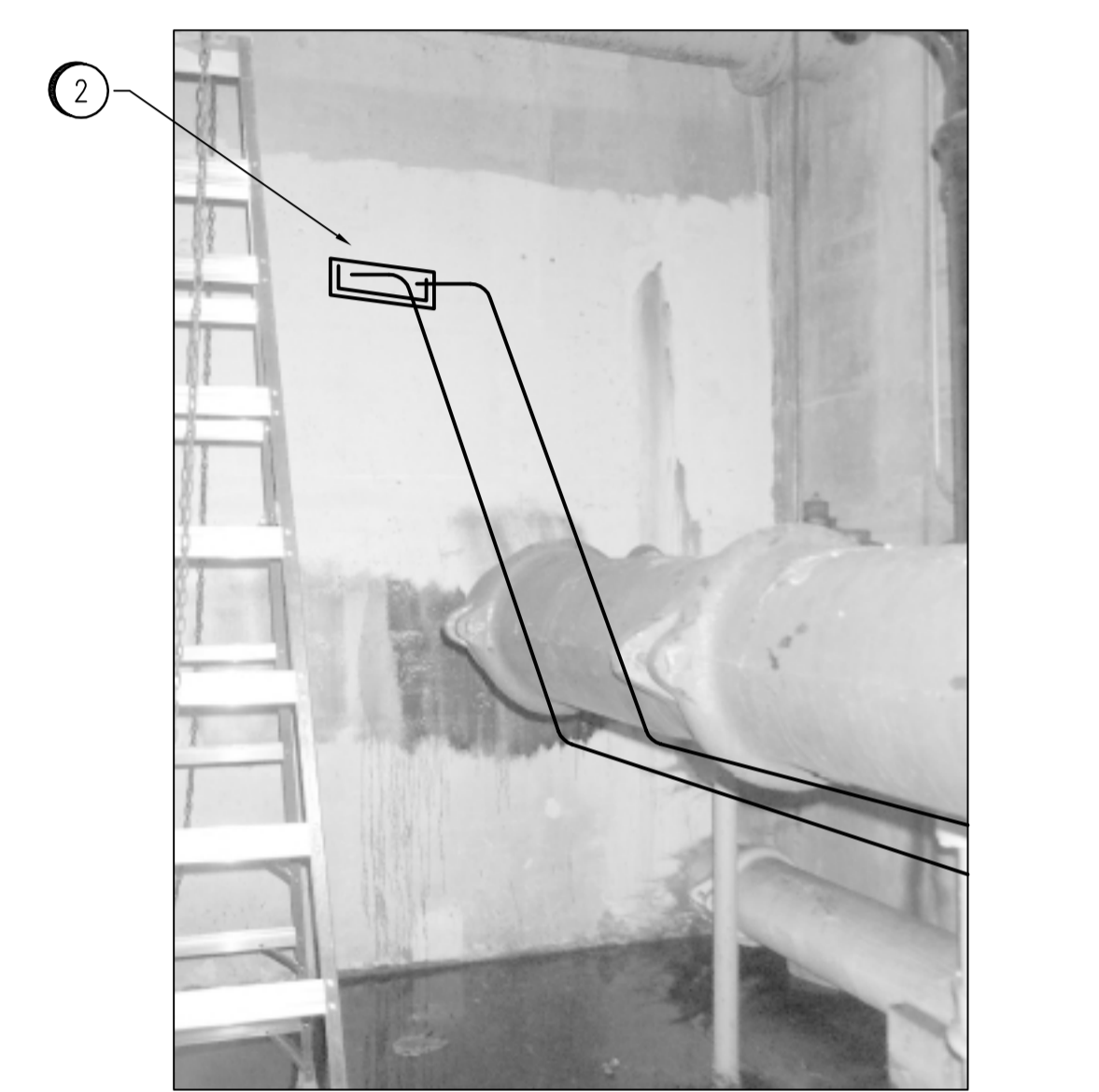
326 DETAIL



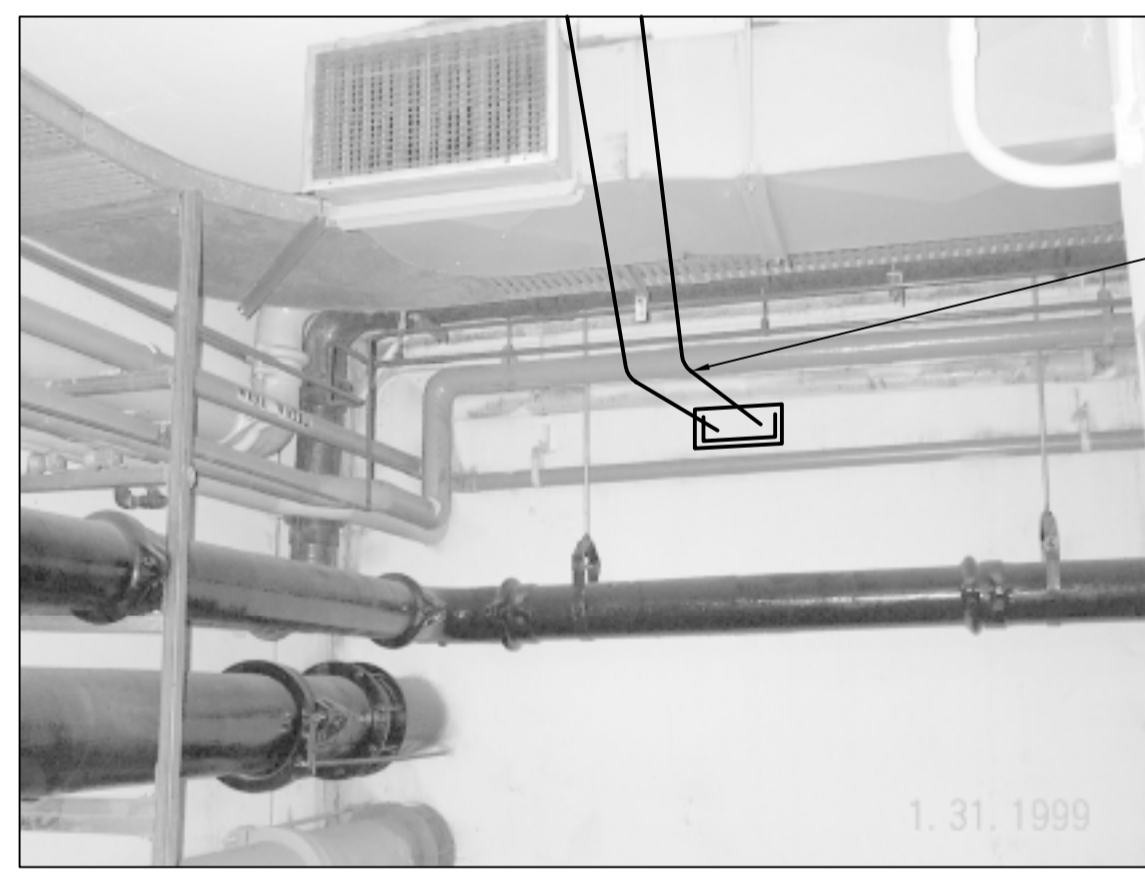
329 DETAIL



681 DETAIL



340 DETAIL



683 DETAIL

CONT'D ON DWG. 1-0101M-A-E0011-002

APEGM
Certificate of Authorization
SNC-Lavalin Engineers & Constructors Inc. (MB)
No. 2365 Expiry: April 30, 2008

NO.	DRAWING NOTES
1	PROVIDE 150mm CLEARANCE FROM TOP OF TRAY TO HEATING DUCT. MAXIMIZE HEADROOM UNDER TRAY.
2	ROUTE TRAY THROUGH WALL TO GALLERY 4. SEAL WITH FIRE STOP MATERIAL.
3	ROUTE TRAY ALONG CEILING AS PER DETAIL ON DWG. 1-0101M-D-E0012.
4	SUPPORT BANK 1 TECK CABLES AS SHOWN IN DETAIL 1 OF DRAWING 1-0101M-D-0012-001. MAINTAIN A MINIMUM OF 1.05 CABLE DIAMETER SPACING BETWEEN CABLES OVER THE ENTIRE ROUTE.
5	PROVIDE 300mm VERTICAL CLEARANCE FROM TOP OF TRAY.

B.M. ELEV.	FIELD BOOK #:	SNC • LAVALIN Engineers & Constructors		SNC • LAVALIN 148 Nature Park Way Winnipeg, Manitoba Canada R3P 0X7	
POSTED TO LBIS		DESIGNED BY C. REIMER	CHECKED BY C. ASMUNDSON	ENGINEER'S SEAL	
		DRAWN BY A. OLIVER	APPROVED BY C. REIMER	PRELIMINARY NOT TO BE USED FOR CONSTRUCTION	
		HOR. SCALE 1:50	RELEASED FOR CONSTRUCTION		
		VERTICAL 1:50	DATE 2007/03/08	THE CITY OF WINNIPEG WATER AND WASTE DEPARTMENT	
00 ISSUED FOR TENDER	2007/06/22	YOM	DATE	NORTH END WATER POLLUTION CONTROL CENTRE MAIN BUILDING FEEDER REPLACEMENTS CABLE ROUTING PLAN BANK 1 - 5KV FEEDER	
NO. REVISIONS	DATE	BY	FILENAME: 1-0101M-A-E0011-003-00D.dwg	CITY DRAWING NUMBER	SHEET REV. SIZE
				1-0101M-A-E0011	003 00 D