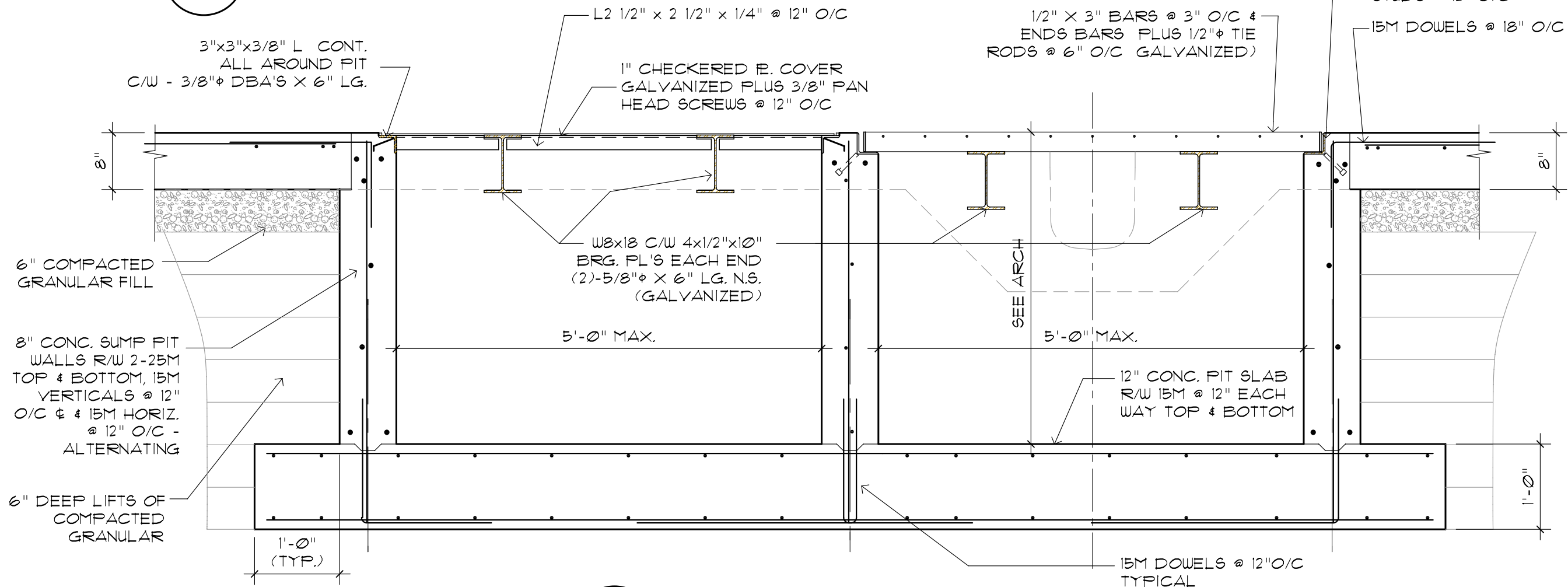
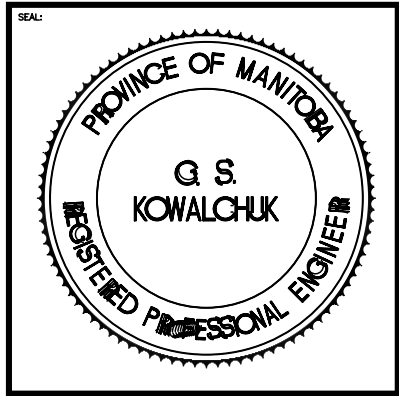


1
S-2.1 TRENCH DRAIN SECTION
3/4" = 1'-0"



2
S-2.1 SUMP SECTION
3/4" = 1'-0"

REV	DESCRIPTION	DATE	CML BY
0	ISSUED FOR TENDER	MAY 11, 2007	CML



THIS DRAWING MUST NOT BE SCALED.
THE GENERAL CONTRACTOR SHALL VERIFY ALL DIMENSIONS, DATUMS AND LEVELS PRIOR TO COMMENCEMENT OF WORK AND IS HELD RESPONSIBLE FOR REPORTING ANY DISCREPANCY OR OMISSION TO NEIL COOPER ARCHITECT INC IMMEDIATELY.
THIS DRAWING IS THE EXCLUSIVE PROPERTY OF NEIL COOPER ARCHITECT INC AND CAN BE REPRODUCED ONLY WITH THE PERMISSION OF NEIL COOPER ARCHITECT INC, IN WHICH CASE THE REPRODUCTION MUST BEAR THEIR NAME AS THE ARCHITECTURAL FIRM.

DRAWING: SECTIONS & DETAILS
PROJECT: 195 TECUMSEH O/H DOOR & CONCRETE SLAB REPLACEMENT WINNIPEG, MANITOBA

Neil Cooper Architect Inc.
10-395 Berry Street, Winnipeg, Manitoba R3J 1N6

Kowalchuk
Consulting Engineers Ltd.
DRAWN BY: DC CHECKED BY: GSK SHEET NO: S2.1R0 REV NO: 0
DATE: MAY. 09, 2007
SCALE: 3/4" = 1'-0"
FILE: Projects\2007\07065\07065-S1.dwg