

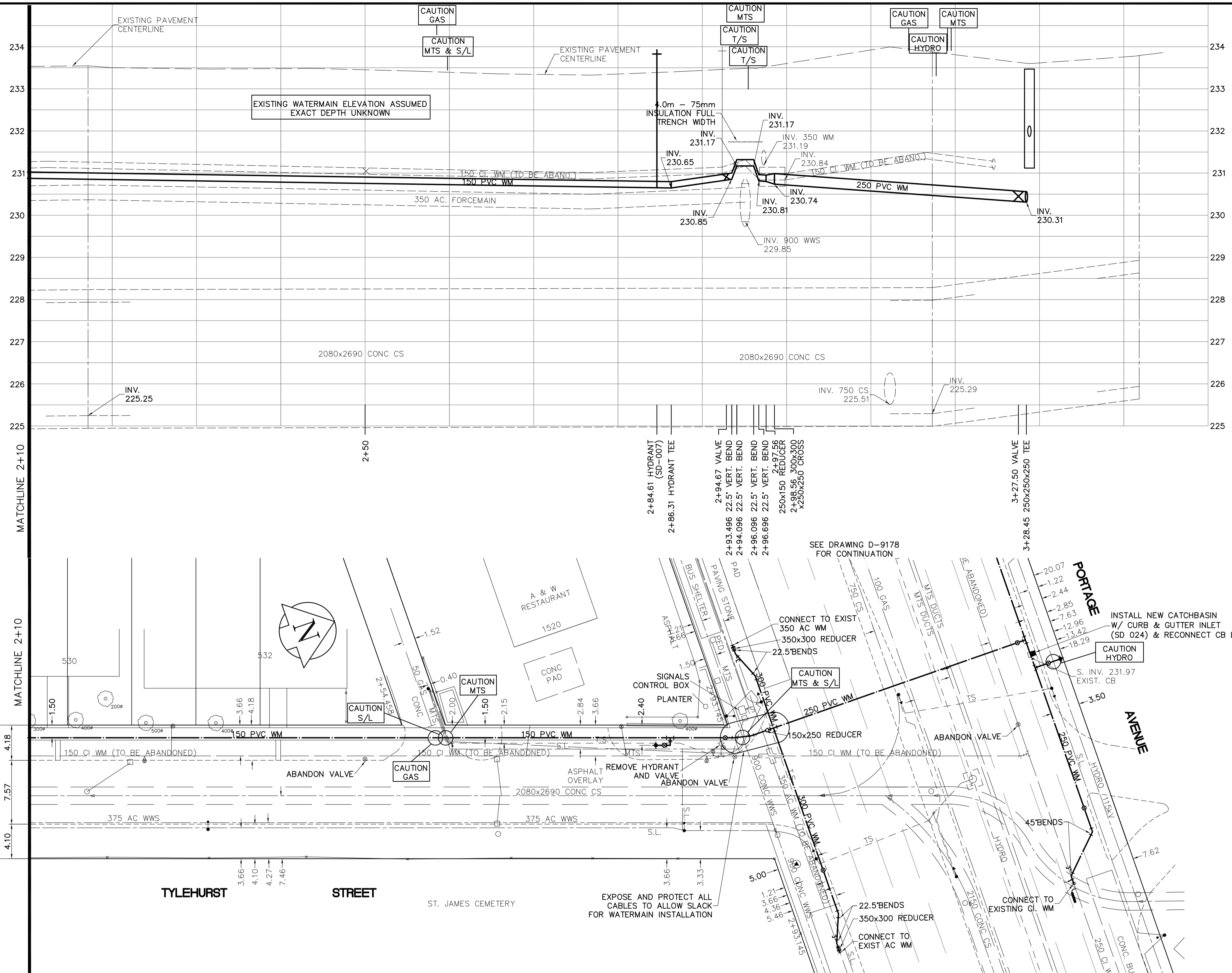
SHEET: GWM-WM-A1 (11/2002)

FILE NAME: L:\work\9994\9994\026-CAD\UD\Conn\9994-C07.dwg

LAYOUT NAME: Layout1

PLOTTED BY: gerald.loscoe

May 31, 2007 - 11:33am

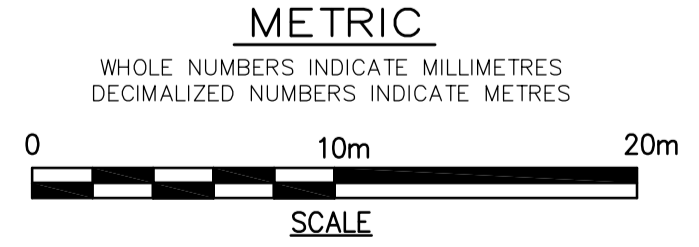


- CONSTRUCTION NOTES**
1. EXPOSE WATERMAIN CONNECTIONS AND CONFIRM INVERTS PRIOR TO CONSTRUCTION.
 2. INSTALL WATERMAIN BY TRENCHLESS METHODS.
 3. ALL MATERIALS SHALL CONFORM TO THE CITY OF WINNIPEG STANDARD CONSTRUCTION SPECIFICATIONS.
 4. MINIMUM COVER TO TOP OF PROPOSED WATERMAIN SHALL BE 2.5m FROM STREET CENTERLINE.
 5. INSTALL ALL HYDRANTS WITH FLANGE ELEVATION 50mm-150mm ABOVE FINISHED GRADE.
 6. REPLACE ALL EXISTING LEAD SERVICES FROM THE PROPOSED WATERMAIN TO PROPERTY LINE.
 7. NOTIFY ALL AFFECTED RESIDENTS AND BUSINESSES 24 HOURS IN ADVANCE OF ANY WATER SHUTDOWN OR DISRUPTION OF SERVICE.
 8. LOCATION OF WATER SERVICES SHOWN ON DRAWINGS ARE APPROXIMATE. THE CONTRACTOR SHALL FIELD LOCATE ALL WATER SERVICES PRIOR TO CONSTRUCTION.
 9. ALL VALVES SHALL BE RED TOP (COUNTER CLOCKWISE TO CLOSE).
 10. BACKFILL UNDER OR WITHIN 1.0m OF PAVEMENTS, INCLUDING SIDEWALKS SHALL BE CLASS 3 BACKFILL EXCEPT AS NOTED. BACKFILL IN BOULEVARDS SHALL BE CLASS 5 BACKFILL.
 11. BACKFILL UNDER OR WITHIN 1.0m OF PORTAGE AVENUE PAVEMENT SHALL BE CLASS 1 BACKFILL.

SEE DRAWING D-9176 FOR CONTINUATION

SEE DRAWING D-9178 FOR CONTINUATION

APEGM
 Certificate of Authorization
 Earth Tech Canada Inc.
 No. 730 Expiry: April 30, 2008



ADDRESS	NATURE OF SERVICE	SIZE	MATERIAL	DISTANCE SC TO PROPERTY	POSITION OF SC (curb stop)	POSITION OF CC (corp)	COMMENTS
1520 PORTAGE AVE	COMMERCIAL	38 mm	COPPER	0.3 m	Long 12.6 m S of SL Short 1.7 m S of NL	Long 0.6 m N of SC	A & W BLDG
1520 PORTAGE AVE	NOT IN USE	19 mm	COPPER	0.3 m	Long 23.5 m S of SL Short 2.7 m S of NL	Long 0.5 m S of SC	WATER CUT OFF AT MAIN
532 TYLERHURST ST	NOT IN USE	38 mm	COPPER	0.3 m	Long 66.0 m S of SL Short 3.4 m N of NL	Long 0.5 m S of SC Short 0.5 m S of SC	BLDG

EXISTING	LEGEND - PLAN	PROPOSED	EXISTING	LEGEND - PROFILE	PROPOSED
150 mm W.M.	WATERMAIN	150 mm W.M.	HYDRANT	WATERMAIN	HYDRANT
300mm L.D.S.	LAND DRAINAGE SEWER	300mm L.D.S.	CONCRETE	VALVE	VALVE
250mm W.W.S.	WASTEWATER SEWER	250mm W.W.S.	ASPHALT	LAND DRAINAGE SEWER	LAND DRAINAGE SEWER
MANHOLE	MANHOLE	PROPERTY LINE	WASTE WATER SEWER	WASTE WATER SEWER	WASTE WATER SEWER
CATCH BASIN	CATCH BASIN	SURVEY BAR	Q PROFILE	Q PROFILE	Q PROFILE
CURB INLET	CURB INLET	CURB STOP			
JUNCTIONS	JUNCTIONS	TREE			
CULVERT	CULVERT	ANODE			
GAS	GAS	CONCRETE SIDEWALK			
		FENCE			

LOCATION APPROVED UNDERGROUND STRUCTURES

NOTE:
 LOCATION OF UNDERGROUND STRUCTURES AS SHOWN ARE BASED ON THE BEST INFORMATION AVAILABLE. BUT NO GUARANTEE IS GIVEN THAT ALL EXISTING UTILITIES ARE SHOWN OR THAT THE GIVEN LOCATIONS ARE EXACT. CONFIRMATION OF EXISTENCE AND EXACT LOCATION OF ALL SERVICES MUST BE OBTAINED FROM THE INDIVIDUAL UTILITIES BEFORE PROCEEDING WITH CONSTRUCTION.

EARTH TECH
 A tyco INTERNATIONAL LTD. COMPANY
 Earth Tech (Canada) Inc. Winnipeg, Manitoba 204-477-5381

DESIGNED BY: GSK, GDL
 CHECKED BY: GSK

DRAWN BY: GDL
 APPROVED BY:

HOR. SCALE: 1:250
 VERTICAL SCALE: 1:50

RELEASED FOR CONSTRUCTION BY: K. ZUREK

DATE: 2007/04/11
 DATE: 2007/05/31

ENGINEER'S SEAL
 PROVINCE OF MANITOBA
 ORIGINAL SIGNED BY
 K.W. FITCHETT
 29/05/2007
 REGISTERED PROFESSIONAL ENGINEER

THE CITY OF WINNIPEG
 Winnipeg WATER AND WASTE DEPARTMENT

2007 WATERMAIN RENEWALS CONTRACT 6

TYLERHURST STREET
 WOLSELEY AVENUE TO PORTAGE AVENUE
 STATION 2+10 TO PORTAGE AVENUE

SHEET OF
 7 OF 8

CITY DRAWING NUMBER
D-9177