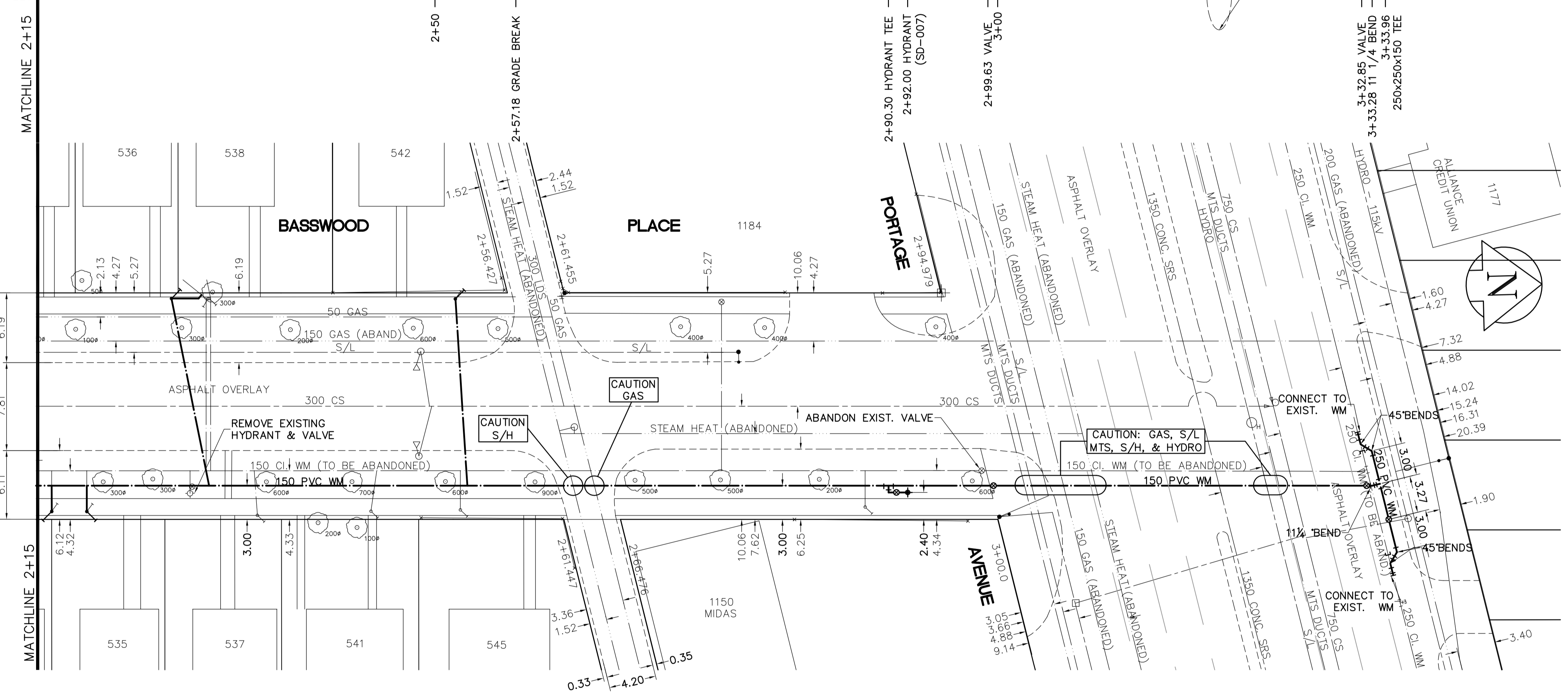
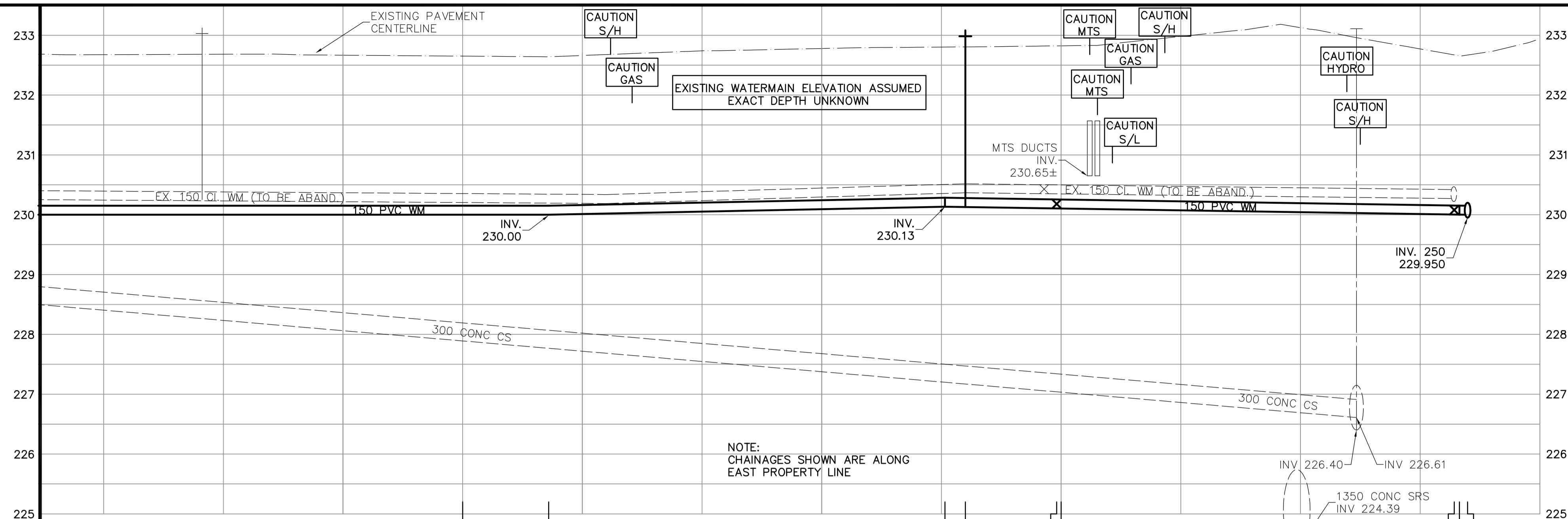
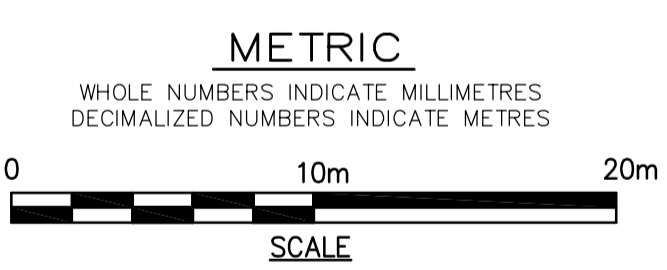


SHEET: GOW-WM-A1 (11/2002)  
 FILE NAME: L:\Users\199900\99942\026-CAD\UD\Gow\99942-C05.dwg  
 LAYOUT NAME: Layout1  
 PLOTTED BY: gerald.losko  
 May 31, 2007 - 11:33am

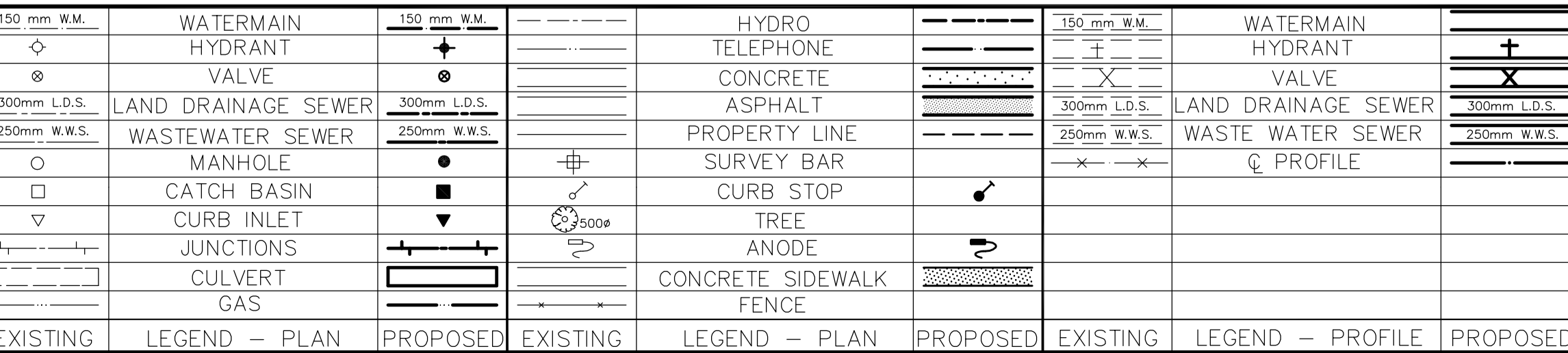


- CONSTRUCTION NOTES**
1. EXPOSE WATERMAIN CONNECTIONS AND CONFIRM INVERTS PRIOR TO CONSTRUCTION.
  2. INSTALL WATERMAIN BY TRENCHLESS METHODS.
  3. ALL MATERIALS SHALL CONFORM TO THE CITY OF WINNIPEG STANDARD CONSTRUCTION SPECIFICATIONS.
  4. MINIMUM COVER TO TOP OF PROPOSED WATERMAIN SHALL BE 2.5m FROM STREET CENTERLINE.
  5. INSTALL ALL HYDRANTS WITH FLANGE ELEVATION 50mm - 150mm ABOVE FINISHED GRADE.
  6. REPLACE ALL EXISTING LEAD SERVICES FROM THE PROPOSED WATERMAIN TO PROPERTY LINE.
  7. NOTIFY ALL AFFECTED RESIDENTS AND BUSINESSES 24 HOURS IN ADVANCE OF ANY WATER SHUTDOWN OR DISRUPTION OF SERVICE.
  8. LOCATION OF WATER SERVICES SHOWN ON DRAWINGS ARE APPROXIMATE. THE CONTRACTOR SHALL FIELD LOCATE ALL WATER SERVICES PRIOR TO CONSTRUCTION.
  9. ALL VALVES SHALL BE RED TOP (COUNTER CLOCKWISE TO CLOSE).
  10. BACKFILL UNDER OR WITHIN 1.0m OF PAVEMENTS, INCLUDING SIDEWALKS SHALL BE CLASS 3 BACKFILL EXCEPT AS NOTED. BACKFILL IN BOULEVARDS SHALL BE CLASS 5 BACKFILL.
  11. BACKFILL UNDER OR WITHIN 1.0m OF PORTAGE AVENUE PAVEMENT SHALL BE CLASS 1 BACKFILL.



ADDRESS	NATURE OF SERVICE	SIZE	MATERIAL	DISTANCE SC TO PROPERTY	POSITION OF SC (curb stop)	POSITION OF CC (corp)	COMMENTS:
545 BASSWOOD PL	RESIDENTIAL	13mm	COPPER	0.3 m	Long 47.5 m S of SL Short 0.6 m N of SL	Long OPP of SC Short 0.3 m N of SC	MAIN TAPPED SERV CON FOR MAIN REPAIR FROZEN 04/06 RENEW TO PROPERTY
542 BASSWOOD PL	RESIDENTIAL	19mm	LEAD	0.5 m	Long 43.1 m S of SL Short 1.1 m N of NL	Long 0.3 m N of SC Short 0.6 m N of SC	
541 BASSWOOD PL	RESIDENTIAL	13mm	COPPER	0.5 m	Long 55.7 m S of SL Short 2.4 m S of NL	Long 0.6 m N of SC Short 0.6 m N of SC	
538 BASSWOOD PL	RESIDENTIAL	19mm	COPPER	0.5 m	Long 1.5 m N of IST Short 1.2 m N of SL	Long 2.4 m S of NPL Short 2.4 m S of NPL	DOUBLE w/ 536
537 BASSWOOD PL	RESIDENTIAL	19mm	COPPER	0.5 m	Long 1.2 m N of IST Short 0.9 m N of SL	Long 2.4 m S of NPL Short 2.4 m S of NPL	DOUBLE w/ 536
536 BASSWOOD PL	RESIDENTIAL	19mm	COPPER	0.5 m	Long 1.2 m N of IST Short 0.9 m N of SL	Long 2.4 m S of NPL Short 2.4 m S of NPL	DOUBLE w/ 536
535 BASSWOOD PL	RESIDENTIAL	16mm	LEAD	0.3 m	Long 80.8 m S of SL Short 0.6 m N of SL	Long 79.2 m S of SL Short 79.2 m S of SL	RENEW TO PROPERTY
533 BASSWOOD PL	RESIDENTIAL	16mm	LEAD	0.3 m	Long 80.8 m S of SL Short 0.6 m N of SL	Long 79.2 m S of SL Short 79.2 m S of SL	RENEW TO PROPERTY

ADDRESS	NATURE OF SERVICE	SIZE	MATERIAL	DISTANCE SC TO PROPERTY	POSITION OF SC (curb stop)	POSITION OF CC (corp)	COMMENTS:
1184 PORTAGE AVE	NOT IN USE	19mm	COPPER	0.5 m	Long 20.1 m N of NL Short 1.8 m N of EL	Long 4.3 m S of SL Short 4.3 m S of SL	BASSWOOD PL STORE
1184 PORTAGE AVE	COMMERCIAL	38mm	COPPER	0.5 m	Long 19.8 m S of SL Short 1.7 m S of NL	Long OPP of SC Short OPP of SC	PORTAGE BUILDING
1179 PORTAGE AVE	NOT IN USE	16mm	LEAD	0.6 m	Long 10.7 m N of NL Short 3.2 m S of NL	Long 0.3 m N of SC Short 0.3 m N of SC	PORTAGE BUILDING
1177 PORTAGE AVE	NOT IN USE	16mm	LEAD	0.6 m	Long 10.7 m N of NL Short 3.2 m S of NL	Long 0.3 m N of SC Short 0.3 m N of SC	PORTAGE BUILDING
1177 PORTAGE AVE	COMMERCIAL	38mm	COPPER	0.9 m	Long 26.4 m N of NL Short 2.9 m N of SL	Long 2.9 m N of SC Short 2.9 m N of SC	PORTAGE BUILDING
1167 PORTAGE AVE	NOT IN USE	19mm	COPPER	0.5 m	Long 29.3 m E of EL Short 3.5 m W of EL	Long 0.3 m E of STOP Short 0.3 m E of STOP	PORTAGE WALL
1161 PORTAGE AVE	NOT IN USE	19mm	LEAD	0.3 m	Long 22.6 m N of NL Short 11.2 m S of SL	Long 0.3 m N of SC Short 0.3 m N of SC	PORTAGE LANE
1161 PORTAGE AVE	NOT IN USE	19mm	LEAD	0.3 m	Long 34.4 m E of EL Short 3.2 m W of EL	Long 0.3 m E of SC Short 0.3 m E of SC	BASSWOOD WASH RACK
1150 PORTAGE AVE	COMMERCIAL	25mm	COPPER	0.3 m	Long 29.3 m S of SL Short 7.9 m S of NL	Long 1.5 m N of SC Short 1.5 m N of SC	PORTAGE BUILDING



**LOCATION APPROVED UNDERGROUND STRUCTURES**

SUPV. U/G STRUCTURES COMMITTEE DATE

**NOTE:**  
 LOCATION OF UNDERGROUND STRUCTURES AS SHOWN ARE BASED ON THE BEST INFORMATION AVAILABLE. BUT NO GUARANTEE IS GIVEN THAT ALL EXISTING UTILITIES ARE SHOWN OR THAT THE GIVEN LOCATIONS ARE EXACT. CONFIRMATION OF EXISTENCE AND EXACT LOCATION OF ALL SERVICES MUST BE OBTAINED FROM THE INDIVIDUAL UTILITIES BEFORE PROCEEDING WITH CONSTRUCTION.

B.M. 37-043  
 ELEV. 233.04

S.W. cor. Portage Ave. & Newman St., Tbt. in N. Conc. foundation No. 1020 Portage Ave. 2m W & 0.2m below precast Conc. wall of N.E. Cor. of Bldg.

B	ISSUED FOR TENDER	2007/05/31	GSK
A	ISSUED FOR REVIEW	2006/05/26	GSK

**EARTH TECH**  
 A tyco INTERNATIONAL LTD. COMPANY  
 Earth Tech (Canada) Inc. Winnipeg, Manitoba 204-477-5381

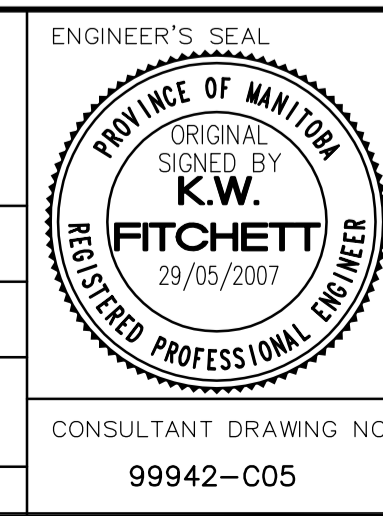
DESIGNED BY: GSK, GDL  
 CHECKED BY: GSK

DRAWN BY: GDL  
 APPROVED BY:

HOR. SCALE: 1:250  
 VERTICAL SCALE: 1:50

RELEASED FOR CONSTRUCTION BY: K. ZUREK

DATE: 2007/04/11  
 DATE: 2007/05/31



**THE CITY OF WINNIPEG**  
 Winnipeg WATER AND WASTE DEPARTMENT

**2007 WATERMAIN RENEWALS CONTRACT 6**

SHEET 5 OF 8  
 CITY DRAWING NUMBER D-9175

BASSWOOD PLACE  
 160m S. OF PORTAGE AVE. TO PORTAGE AVE.  
 STA. 2+15 TO PORTAGE AVE.

CONSULTANT DRAWING NO. 99942-C05