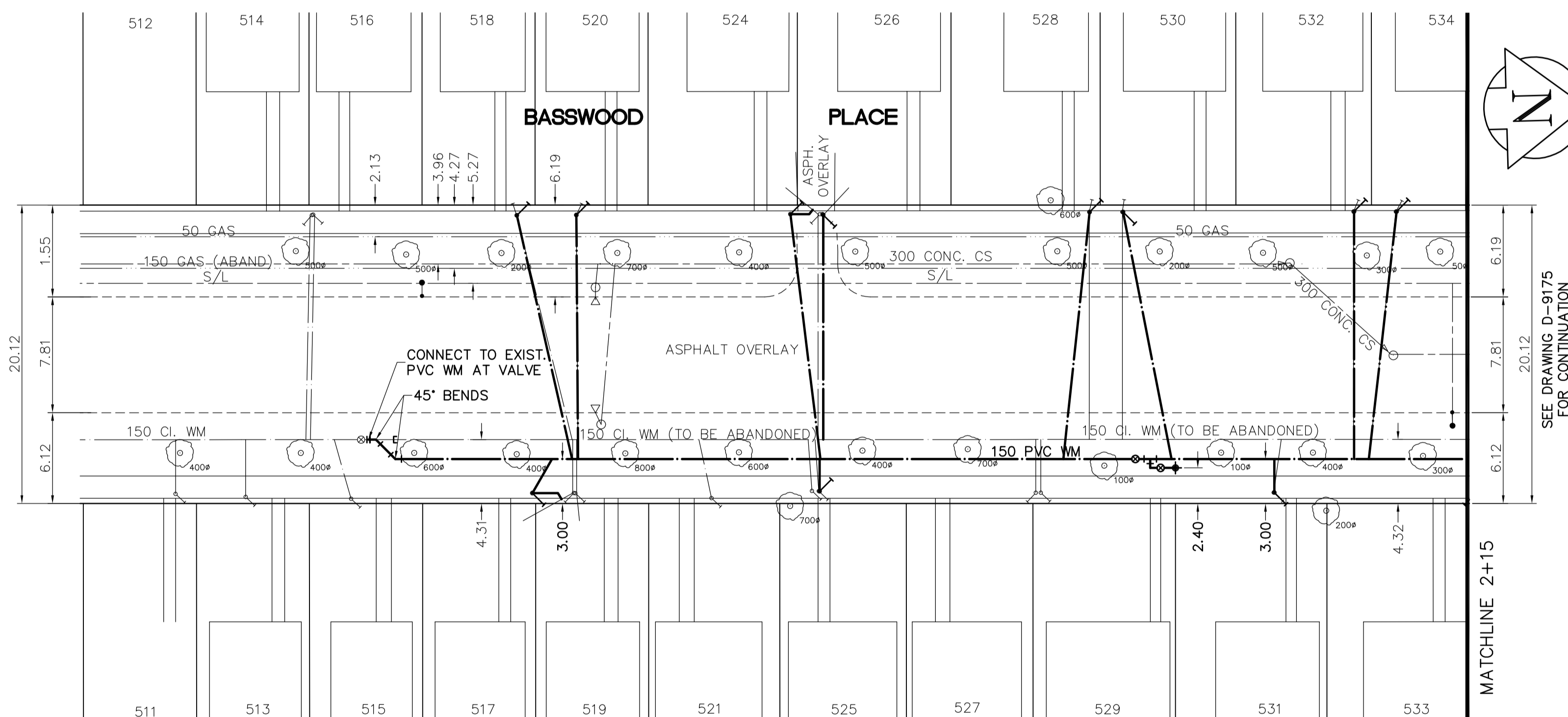
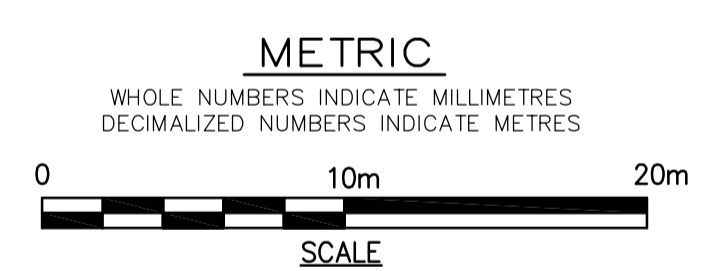


- CONSTRUCTION NOTES**
- EXPOSE WATERMAIN CONNECTIONS AND CONFIRM INVERTS PRIOR TO CONSTRUCTION.
 - INSTALL WATERMAIN BY TRENCHLESS METHODS.
 - ALL MATERIALS SHALL CONFORM TO THE CITY OF WINNIPEG STANDARD CONSTRUCTION SPECIFICATIONS.
 - MINIMUM COVER TO TOP OF PROPOSED WATERMAIN SHALL BE 2.5m FROM STREET CENTERLINE.
 - INSTALL ALL HYDRANTS WITH FLANGE ELEVATION 50mm- 150mm ABOVE FINISHED GRADE.
 - REPLACE ALL EXISTING LEAD SERVICES FROM THE PROPOSED WATERMAIN TO PROPERTY LINE.
 - NOTIFY ALL AFFECTED RESIDENTS AND BUSINESSES 24 HOURS. IN ADVANCE OF ANY WATER SHUTDOWN OR DISRUPTION OF SERVICE.
 - LOCATION OF WATER SERVICES SHOWN ON DRAWINGS ARE APPROXIMATE. THE CONTRACTOR SHALL FIELD LOCATE ALL WATER SERVICES PRIOR TO CONSTRUCTION.
 - ALL VALVES SHALL BE RED TOP (COUNTER CLOCKWISE TO CLOSE).
 - BACKFILL UNDER OR WITHIN 1.0m OF PAVEMENTS, INCLUDING SIDEWALKS SHALL BE CLASS 3 BACKFILL EXCEPT AS NOTED. BACKFILL IN BOULEVARDS SHALL BE CLASS 5 BACKFILL.

NOTE:
CHAINAGES SHOWN ARE ALONG EAST PROPERTY LINE



SEE DRAWING D-9175 FOR CONTINUATION



ADDRESS	NATURE OF SERVICE	SIZE	MATERIAL	DISTANCE SC TO PROPERTY	POSITION OF SC (curb stop)	POSITION OF CC (corp)	COMMENTS:
525 BASSWOOD PL	RESIDENTIAL	16 mm	LEAD	0.3 m	Long: 128.0 m S of SL Short: 1.5 m N of SL	PORTAGE	RENEWED ON PROP. SIDE RENEW TO PROPERTY
524 BASSWOOD PL	RESIDENTIAL	16 mm	LEAD	0.6 m	Long: 123.1 m S of SL Short: 1.8 m N of SL	PORTAGE	DOUBLE W/ 526 FROZEN 03/96 RENEW TO PROPERTY
521 BASSWOOD PL	RESIDENTIAL	19 mm	COPPER	0.5 m	Long: 133.8 m S of SL Short: 4.0 m N of SL	PORTAGE	DOUBLE W/ 525 RENEW TO PROPERTY
520 BASSWOOD PL	RESIDENTIAL	16 mm	LEAD	15.8 m	Long: 163.1 m N of NL Short: 1.8 m N of SL	HOUSE WOLSELEY BLDG 520	DOUBLE W/ 518 RENEW TO PROPERTY
519 BASSWOOD PL	RESIDENTIAL	19 mm	COPPER	0.8 m	Long: 45.1 m N of 2ND HYDT S PORTAGE BLDG 519 Short: 2.0 m N of SL	PORTAGE	DOUBLE W/ 517 RENEW TO PROPERTY
518 BASSWOOD PL	RESIDENTIAL	16 mm	LEAD	0.3 m	Long: 163.1 m N of NL Short: 1.8 m N of SL	HOUSE WOLSELEY BLDG 520	DOUBLE W/ 520 RENEW TO PROPERTY
517 BASSWOOD PL	RESIDENTIAL	19 mm	COPPER	0.8 m	Long: 44.8 m N of 2ND HYDT S PORTAGE BLDG 519 Short: 1.7 m N of SL	PORTAGE	DOUBLE W/ 519 RENEW TO PROPERTY
515 BASSWOOD PL	RESIDENTIAL	19 mm	COPPER	8.8 m	Long: 2.4 m N of LOT LINE Short: 1.2 m N of SL	PORTAGE	July 02 was double with 513
516 BASSWOOD PL	RESIDENTIAL	19 mm	LEAD	0.3 m	Long: 145.1 m N of NL Short: CNTR of B.DG BLDG	HOUSE WOLSELEY BLDG	DOUBLE WITH 514 BASSWOOD

ADDRESS	NATURE OF SERVICE	SIZE	MATERIAL	DISTANCE SC TO PROPERTY	POSITION OF SC (curb stop)	POSITION OF CC (corp)	COMMENTS:
534 BASSWOOD PL	RESIDENTIAL	16 mm	LEAD	0.3 m	Long: 84.7 m S of SL Short: 0.6 m S of SL	PORTAGE	FORMERLY DOUBLE W/ 532 NOW SGL FROZEN 03/03 RENEW TO PROPERTY
532 BASSWOOD PL	RESIDENTIAL	19 mm	COPPER	0.3 m	Long: 20.6 m S of 1ST HOUSE Short: 0.6 m S of NL	HYDT S PORTAGE	FORMERLY DOUBLE W/ 534 NOW SGL FROZEN 03/97 RENEW TO PROPERTY
531 BASSWOOD PL	RESIDENTIAL	13 mm	LEAD	0.3 m	Long: 96.9 m S of SL Short: 0.6 m S of SL	PORTAGE	DOUBLE W/ 518 RENEW TO PROPERTY
530 BASSWOOD PL	RESIDENTIAL	16 mm	LEAD	0.3 m	Long: 103.0 m S of SL Short: 0.3 m S of SL	PORTAGE	DOUBLE W/ 528 RENEW TO PROPERTY
529 BASSWOOD PL	RESIDENTIAL	19 mm	COPPER	0.3 m	Long: 114.3 m S of SL Short: 0.6 m S of SL	PORTAGE	DOUBLE W/ 527, RENEWED ON ST FR 58.1 TO 34 CU NOV 5/91
528 BASSWOOD PL	RESIDENTIAL	16 mm	LEAD	0.3 m	Long: 103.0 m S of SL Short: 0.3 m S of SL	PORTAGE	DOUBLE W/ 530 RENEW TO PROPERTY
527 BASSWOOD PL	RESIDENTIAL	19 mm	COPPER	0.3 m	Long: 114.3 m S of SL Short: 0.6 m S of SL	PORTAGE	DOUBLE W/ 526, RENEWED ON ST FR 58.1 TO 34 CU NOV 1/91
526 BASSWOOD PL	RESIDENTIAL	19 mm	COPPER	0.6 m	Long: 123.1 m S of SL Short: 0.9 m S of SL	PORTAGE	DOUBLE W/ 524 FROZEN 03/96 RENEW TO PROPERTY

EXISTING	LEGEND - PLAN	PROPOSED	EXISTING	LEGEND - PLAN	PROPOSED	EXISTING	LEGEND - PROFILE	PROPOSED
150 mm W.M.	WATERMAIN	150 mm W.M.	HYDRO TELEPHONE	CONCRETE ASPHALT	PROPERTY LINE	150 mm W.M.	WATERMAIN	HYDRANT VALVE
300mm L.D.S.	LAND DRAINAGE SEWER	300mm L.D.S.	CONCRETE	PROPERTY LINE	PROPERTY LINE	300mm L.D.S.	LAND DRAINAGE SEWER	WASTE WATER SEWER
250mm W.W.S.	WASTE WATER SEWER	250mm W.W.S.	ASPHALT	PROPERTY LINE	PROPERTY LINE	250mm W.W.S.	WASTE WATER SEWER	Q PROFILE
MANHOLE	MANHOLE	MANHOLE	SURVEY BAR	SURVEY BAR	SURVEY BAR	MANHOLE	MANHOLE	MANHOLE
CATCH BASIN	CATCH BASIN	CATCH BASIN	CURB STOP	CURB STOP	CURB STOP	CATCH BASIN	CATCH BASIN	CATCH BASIN
CURB INLET	CURB INLET	CURB INLET	TREE	TREE	TREE	CURB INLET	CURB INLET	CURB INLET
JUNCTIONS	JUNCTIONS	JUNCTIONS	ANODE	ANODE	ANODE	JUNCTIONS	JUNCTIONS	JUNCTIONS
CULVERT	CULVERT	CULVERT	CONCRETE SIDEWALK	CONCRETE SIDEWALK	CONCRETE SIDEWALK	CULVERT	CULVERT	CULVERT
GAS	GAS	GAS	FENCE	FENCE	FENCE	GAS	GAS	GAS

LOCATION APPROVED UNDERGROUND STRUCTURES

SUPV. U/G STRUCTURES COMMITTEE DATE

NOTE:
LOCATION OF UNDERGROUND STRUCTURES AS SHOWN ARE BASED ON THE BEST INFORMATION AVAILABLE. BUT NO GUARANTEE IS GIVEN THAT ALL EXISTING UTILITIES ARE SHOWN OR THAT THE GIVEN LOCATIONS ARE EXACT. CONFIRMATION OF EXISTENCE AND EXACT LOCATION OF ALL SERVICES MUST BE OBTAINED FROM THE INDIVIDUAL UTILITIES BEFORE PROCEEDING WITH CONSTRUCTION.

NO.	REVISIONS	DATE	BY
B	ISSUED FOR TENDER	2007/05/31	GSK
A	ISSUED FOR REVIEW	2006/05/26	GSK

EARTH TECH
A tyco INTERNATIONAL LTD. COMPANY
Earth Tech (Canada) Inc. Winnipeg, Manitoba 204-477-5381

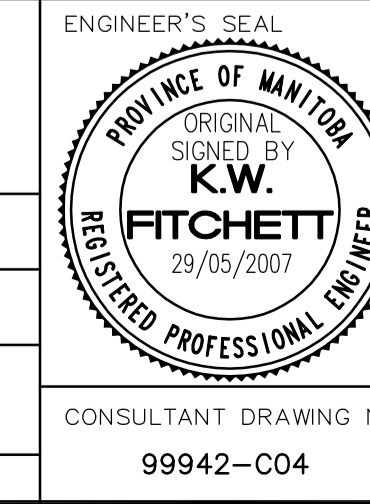
DESIGNED BY: GSK, GDL
CHECKED BY: GSK

DRAWN BY: GDL
APPROVED BY:

HOR. SCALE: 1:250
VERTICAL SCALE: 1:50

RELEASED FOR CONSTRUCTION BY: K. ZUREK

DATE: 2007/04/11
DATE: 2007/05/31



THE CITY OF WINNIPEG
Winnipeg WATER AND WASTE DEPARTMENT

2007 WATERMAIN RENEWALS CONTRACT 6

SHEET 4 OF 8
CITY DRAWING NUMBER D-9174

BASSWOOD PLACE
160m S. OF PORTAGE AVE. TO PORTAGE AVE.
STA. 1+41 TO STA. 2+15

CONSULTANT DRAWING NO. 99942-C04