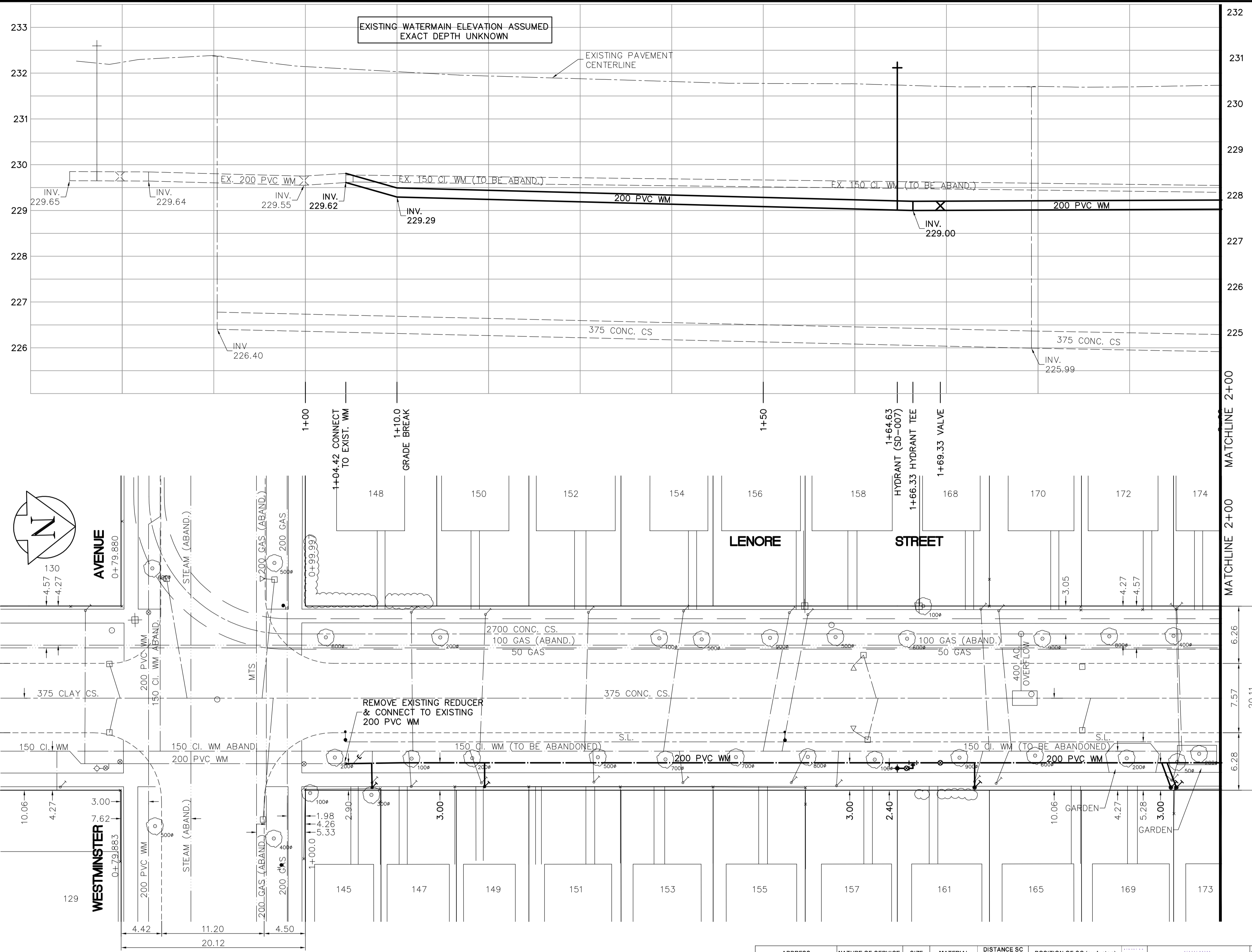
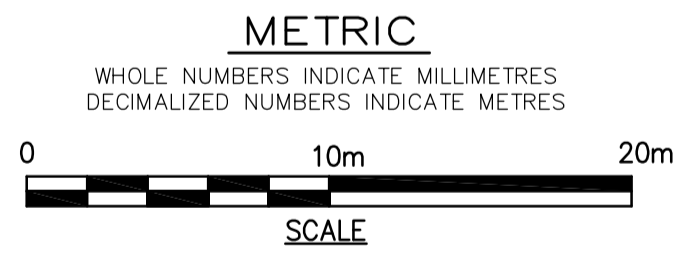


SHEET: COW-WM-A1 (11/2002) FILE NAME: L:\Users\199000\9994\206-CAD\UD\Comm\99942-C01.dwg LAYOUT NAME: layout1 May 31, 2007 - 11:30am PLOTTED BY: gerald.loskocze



MATCHLINE 2+00
MATCHLINE 2+00
SEE DRAWING D-9172 FOR CONTINUATION

- CONSTRUCTION NOTES**
1. EXPOSE WATERMAIN CONNECTIONS AND CONFIRM INVERTS PRIOR TO CONSTRUCTION.
 2. INSTALL WATERMAIN BY TRENCHLESS METHODS.
 3. ALL MATERIALS SHALL CONFORM TO THE CITY OF WINNIPEG STANDARD CONSTRUCTION SPECIFICATIONS.
 4. MINIMUM COVER TO TOP OF PROPOSED WATERMAIN SHALL BE 2.5m FROM STREET CENTERLINE.
 5. INSTALL ALL HYDRANTS WITH FLANGE ELEVATION 50mm- 150mm ABOVE FINISHED GRADE.
 6. REPLACE ALL EXISTING LEAD SERVICES FROM THE PROPOSED WATERMAIN TO PROPERTY LINE.
 7. NOTIFY ALL AFFECTED RESIDENTS AND BUSINESSES 24 HOURS IN ADVANCE OF ANY WATER SHUTDOWN OR DISRUPTION OF SERVICE.
 8. LOCATION OF WATER SERVICES SHOWN ON DRAWINGS ARE APPROXIMATE. THE CONTRACTOR SHALL FIELD LOCATE ALL WATER SERVICES PRIOR TO CONSTRUCTION.
 9. ALL VALVES SHALL BE RED TOP (COUNTER CLOCKWISE TO CLOSE).
 10. BACKFILL UNDER OR WITHIN 1.0m OF PAVEMENTS, INCLUDING SIDEWALKS SHALL BE CLASS 3 BACKFILL EXCEPT AS NOTED. BACKFILL IN BOULEVARDS SHALL BE CLASS 5 BACKFILL.



ADDRESS	NATURE OF SERVICE	SIZE	MATERIAL	DISTANCE SC TO PROPERTY	POSITION OF SC (curb stop)	POSITION OF CC (corp)	COMMENTS:
174 LENORE ST	RESIDENTIAL	19 mm	COPPER	0.5 m	Long: 65.4 m N of NL WESTMINSTER HOUSE Short: 0.3 m S of SL	Long: OPP of SC	FORMER DOUBLE W/ 172 NOW SINGLE
173 LENORE ST	RESIDENTIAL	16 mm	LEAD	0.5 m	Long: 55.1 m N of NL WESTMINSTER HOUSE Short: 1.4 m S of SL	Long: 0.3 m N of SC	DOUBLE W/ 169 SERV NOW UNCROSSED RENEW TO PROPERTY
172 LENORE ST	RESIDENTIAL	19 mm	COPPER	0.5 m	Long: 95.1 m N of NL WESTMINSTER HOUSE Short: 2.1 m N of NL	Short: 0.9 m N of SC	FORMER DOUBLE W/ 174 NOW SINGLE
170 LENORE ST	RESIDENTIAL	19 mm	COPPER	0.5 m	Long: 75.9 m N of NL WESTMINSTER HOUSE Short: 1.1 m S of SL	Short: 0.9 m N of SC	FORMER DOUBLE W/ 168
169 LENORE ST	RESIDENTIAL	16 mm	LEAD	0.3 m	Long: 95.1 m N of NL WESTMINSTER BLDG 169 Short: 0.3 m N of NL	Short: 0.3 m N of SC	FORMER DOUBLE WITH 173 RENEW TO PROPERTY
168 LENORE ST	RESIDENTIAL	19 mm	COPPER	0.3 m	Long: 72.8 m N of NL WESTMINSTER HOUSE Short: 1.1 m S of SL	Short: 1.8 m N of SC	
165 LENORE ST	RESIDENTIAL	19 mm	COPPER	0.5 m	Long: 37.5 m S of 1ST HYD HOUSE Short: 0.9 m S of SL	Long: 0.3 m S of SC	NEW CORP IN OLD CORP HOLE
161 LENORE ST	RESIDENTIAL	16 mm	LEAD	0.3 m	Long: 75.9 m N of NL WESTMINSTER HOUSE Short: 1.1 m S of SL	Long: 0.9 m N of SC	FORMER DOUBLE NOW SINGLE S/C RENEW TO PROPERTY
158 LENORE ST	RESIDENTIAL	19 mm	COPPER	0.8 m	Long: 54.1 m N of NL WESTMINSTER HOUSE Short: 0.3 m S of SL	Short: 4.1 m S of SC	DOUBLE WITH 156
157 LENORE ST	RESIDENTIAL	19 mm	COPPER	0.3 m	Long: 58.2 m N of NL WESTMINSTER HOUSE Short: 1.8 m N of SL	Long: S of SC	FORMER DOUBLE W/ 155

ADDRESS	NATURE OF SERVICE	SIZE	MATERIAL	DISTANCE SC TO PROPERTY	POSITION OF SC (curb stop)	POSITION OF CC (corp)	COMMENTS:
156 LENORE ST	RESIDENTIAL	19 mm	COPPER	0.7 m	Long: 52.3 m N of NL WESTMINSTER HOUSE Short: 1.2 m S of SL	Long: 2.4 m S of SC	DOUBLE W/ 158
155 LENORE ST	RESIDENTIAL	19 mm	COPPER	0.5 m	Long: 54.1 m N of NL WESTMINSTER HOUSE Short: 0.3 m S of SL	Long: 0.6 m N of SC	
154 LENORE ST	RESIDENTIAL	19 mm	COPPER	0.3 m	Long: 40.6 m N of NL WESTMINSTER HOUSE Short: 2.5 m S of NL	Short: 1.5 m S of SC	
153 LENORE ST	RESIDENTIAL	13 mm	COPPER	0.2 m	Long: 41.1 m N of NL WESTMINSTER BASEMENT Short: 1.8 m S of NL	Short: 0.3 m S of SC	
152 LENORE ST	RESIDENTIAL	19 mm	COPPER	0.5 m	Long: 30.5 m N of NL WESTMINSTER HOUSE Short: 3.0 m S of NL	Short: OPP of SC	SERV REN ON ST FR 3/4 LEAD TO 3/4 COPPER OCT 1990 USED OLD CORP
151 LENORE ST	RESIDENTIAL	19 mm	COPPER	0.5 m	Long: 32.0 m N of NL WESTMINSTER HOUSE Short: 15.6 m N of SL	Short: 0.6 m S of SC	
150 LENORE ST	RESIDENTIAL	19 mm	COPPER	0.7 m	Long: 19.2 m N of NL WESTMINSTER HOUSE Short: 2.7 m S of NL	Short: 0.8 m S of SC	
149 LENORE ST	RESIDENTIAL	16 mm	LEAD	0.3 m	Long: 19.2 m N of NL WESTMINSTER HOUSE Short: 1.8 m N of SL	Short: 1.2 m S of SC	RENEW TO PROPERTY
148 LENORE ST	RESIDENTIAL	19 mm	COPPER	0.5 m	Long: 11.7 m N of NL WESTMINSTER HOUSE Short: 0.3 m N of NL	Long: OPP of SC	
147 LENORE ST	RESIDENTIAL	19 mm	COPPER	0.3 m	Long: 11.6 m N of NL WESTMINSTER HOUSE Short: 2.6 m N of NL	Short: 0.3 m S of SC	FORMER DOUBLE W/ 149
145 LENORE ST	RESIDENTIAL	13 mm	LEAD	0.8 m	Long: 7.6 m N of NL WESTMINSTER HOUSE Short: 1.8 m S of NL	Long: 0.3 m S of SC	RENEW TO PROPERTY

LOCATION APPROVED UNDERGROUND STRUCTURES

SUPV. U/G STRUCTURES DATE COMMITTEE

NOTE:
LOCATION OF UNDERGROUND STRUCTURES AS SHOWN ARE BASED ON THE BEST INFORMATION AVAILABLE. BUT NO GUARANTEE IS GIVEN THAT ALL EXISTING UTILITIES ARE SHOWN OR THAT THE GIVEN LOCATIONS ARE EXACT. CONFIRMATION OF EXISTENCE AND EXACT LOCATION OF ALL SERVICES MUST BE OBTAINED FROM THE INDIVIDUAL UTILITIES BEFORE PROCEEDING WITH CONSTRUCTION.

150 mm W.M.	WATERMAIN	150 mm W.M.	HYDRO	150 mm W.M.	WATERMAIN	300mm L.D.S.	LAND DRAINAGE SEWER
300mm L.D.S.	LAND DRAINAGE SEWER	250mm W.W.S.	WASTE WATER SEWER	300mm L.D.S.	LAND DRAINAGE SEWER	250mm W.W.S.	WASTE WATER SEWER
250mm W.W.S.	WASTE WATER SEWER	250mm W.W.S.	WASTE WATER SEWER	300mm L.D.S.	LAND DRAINAGE SEWER	250mm W.W.S.	WASTE WATER SEWER

EARTH TECH
A tyco INTERNATIONAL LTD. COMPANY
Earth Tech (Canada) Inc. Winnipeg, Manitoba 204-477-5381

DESIGNED BY: GSK, GDL
CHECKED BY: GSK
DRAWN BY: GDL
APPROVED BY: KWF

HOR. SCALE: 1:250
VERTICAL SCALE: 1:50

RELEASED FOR CONSTRUCTION BY: K. ZUREK

CONSULTANT DRAWING NO. 99942-C01

DATE: 2007/04/11
DATE: 2007/05/31

THE CITY OF WINNIPEG
Winnipeg WATER AND WASTE DEPARTMENT

2007 WATERMAIN RENEWALS CONTRACT 6

LENORE STREET
WESTMINSTER AVENUE TO PORTAGE AVENUE
WESTMINSTER AVENUE TO STA. 2+00

SHEET 1 OF 8
CITY DRAWING NUMBER D-9171