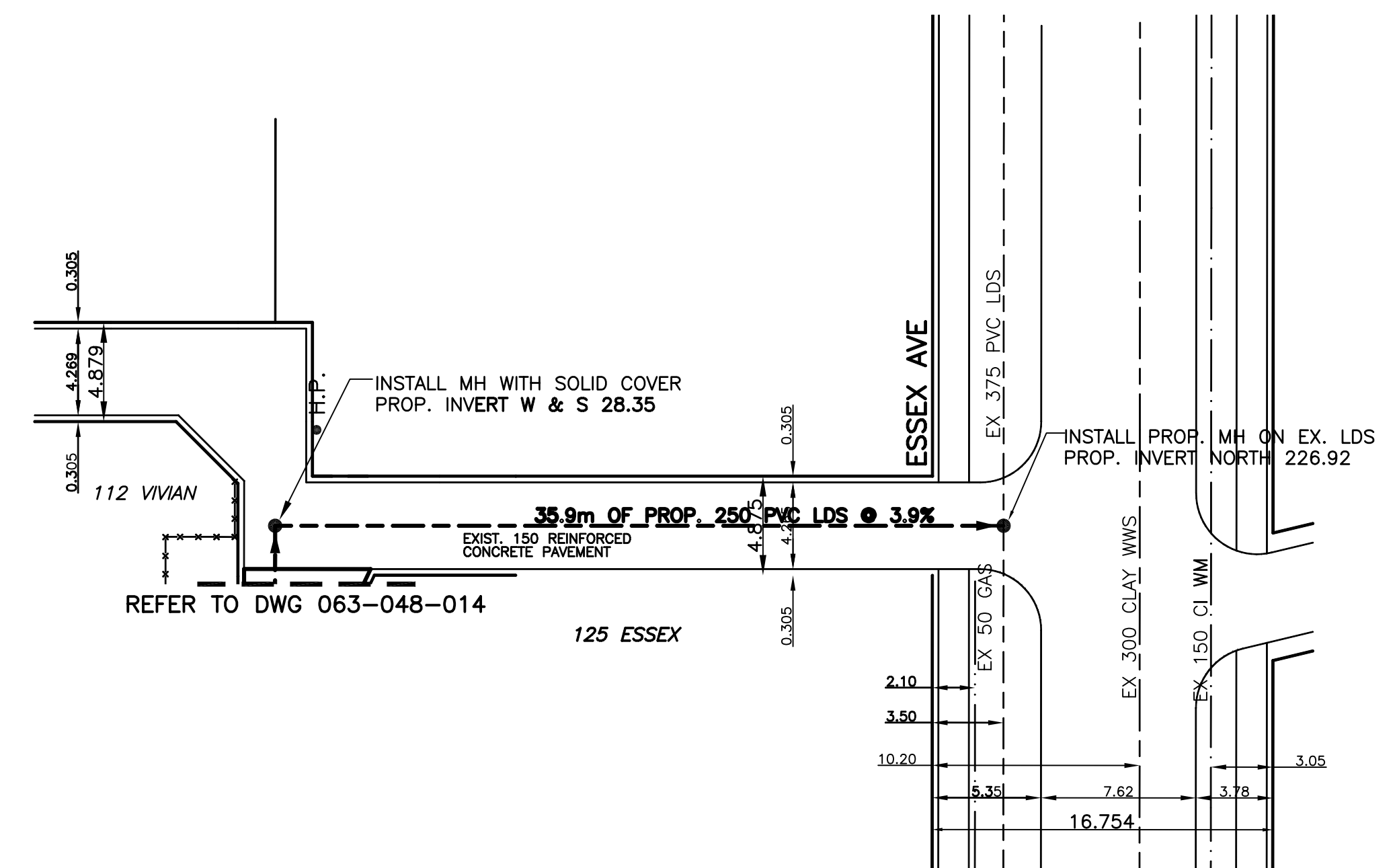
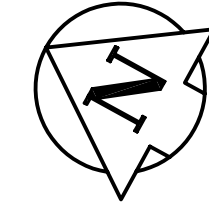


CHAINAGE ALONG CENTER OF ROW



BENCHMARK:
S.W. COR. VIVIAN AVE. & ST. MARY'S RD., TBLT. IN 7.6 m CONC. PILE, BENEATH VALVE BOX
MARKED "W", 6.6 m N. OF C.L. OF VIVIAN AVE. & 2.9 m W. OF W. CURB OF PAVT.
OF SOUTHBOUND TRAFFIC LANE OF ST. MARY'S RD., OR 2.2 m S. OF N.L. VIVIAN AVE.
PRODUCED FROM E. & 0.3 m E. OF W.L. ST. MARY'S RD.

METRIC
WHOLE NUMBERS INDICATE MILLIMETRES
DECIMALIZED NUMBERS INDICATE METRES

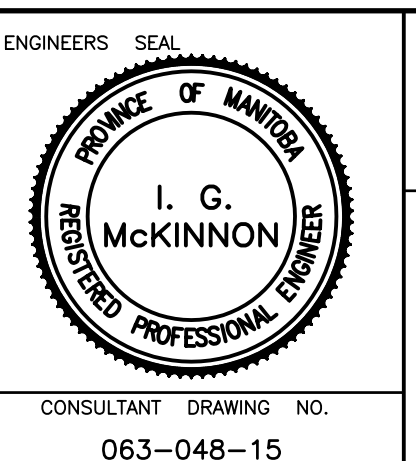
APEGM
Certificate of Authorization
SEG Engineering Inc.
No. 252 Expiry: April 30, 2008

---	WATERMAIN	---	HYDRO	---	CENTER LINE	---	LOCATION APPROVED
⊕	HYDRANT	⊕	M.T.S.	---	NORTH GUTTER LINE	---	B.M. ELEV. CWM: 54-018 231.528
⊕	VALVE	⊕	CONCRETE	---	SOUTH GUTTER LINE	---	DESIGNED BY D.J.
---	LAND DRAINAGE SEWER	---	ASPHALT	---	WATERMAIN	---	CHECKED BY S.M.
---	WASTE WATER SEWER	---	PROPERTY LINE	---	VALVE	---	DRAWN BY D.J.
○	MANHOLE	⊕	SURVEY BAR	---	LAND DRAINAGE SEWER	---	APPROVED BY I.McK
□	CATCH BASIN	●	CURB STOP	---	WASTE WATER SEWER	---	HOR. SCALE: 1:250
△	CURB INLET	▲	C.B. LEAD	---	JUNCTIONS	---	VERT. SCALE: 1:50
---	TRAFFIC SIGNAL	---	SIDEWALK	---	CULVERT	---	RELEASED FOR CONSTRUCTION
---	STEAM HT.	---	FENCE LINE	---	ASPH./CONC. PAD	---	CONSULTANT DRAWING NO. 063-048-15
---	GAS	---	ELEVATIONS	---	GARAGE PAD	---	2007 LOCAL IMPROVEMENTS VIVIAN/ESSEX LANE LAND DRAINAGE SEWER FROM NEW MANHOLE AT STATION 3+23.424 TO ESSEX AVE.
---	EXISTING	---	LEGEND - PLAN	---	PROPOSED	---	CITY DRAWING NO. SHEET 3 OF 3

NO.	REVISIONS	DATE	BY

SEG ENGINEERING INC.
200 TACHE AVENUE
WINNIPEG, MANITOBA
(204)-233-2113

DESIGNED BY D.J.
DRAWN BY D.J.
CHECKED BY S.M.
APPROVED BY I.McK
HOR. SCALE: 1:250
VERT. SCALE: 1:50
DATE: JUNE 2007



THE CITY OF WINNIPEG
PUBLIC WORKS DEPARTMENT

2007 LOCAL IMPROVEMENTS
VIVIAN/ESSEX LANE
LAND DRAINAGE SEWER
FROM NEW MANHOLE AT STATION 3+23.424
TO ESSEX AVE.

344-2007