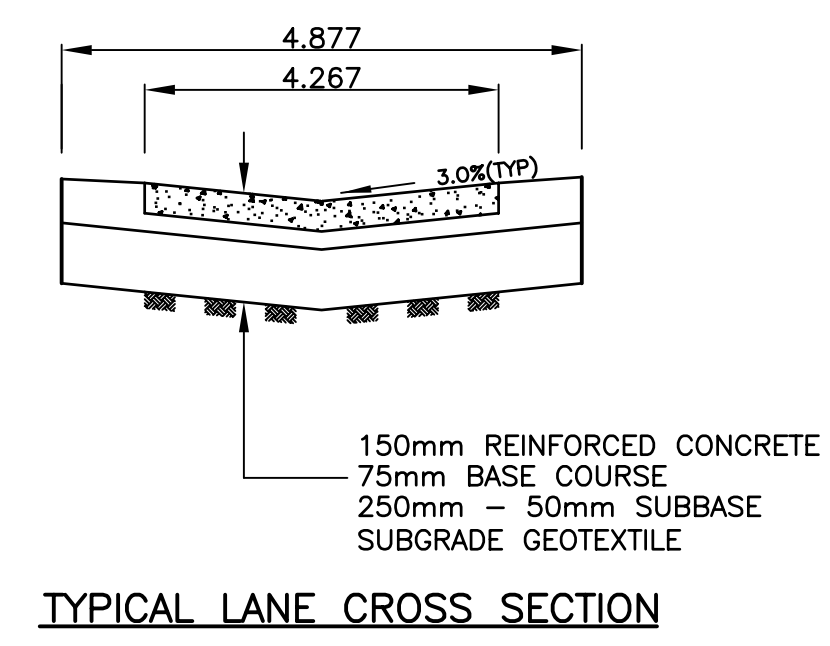
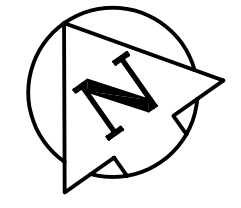
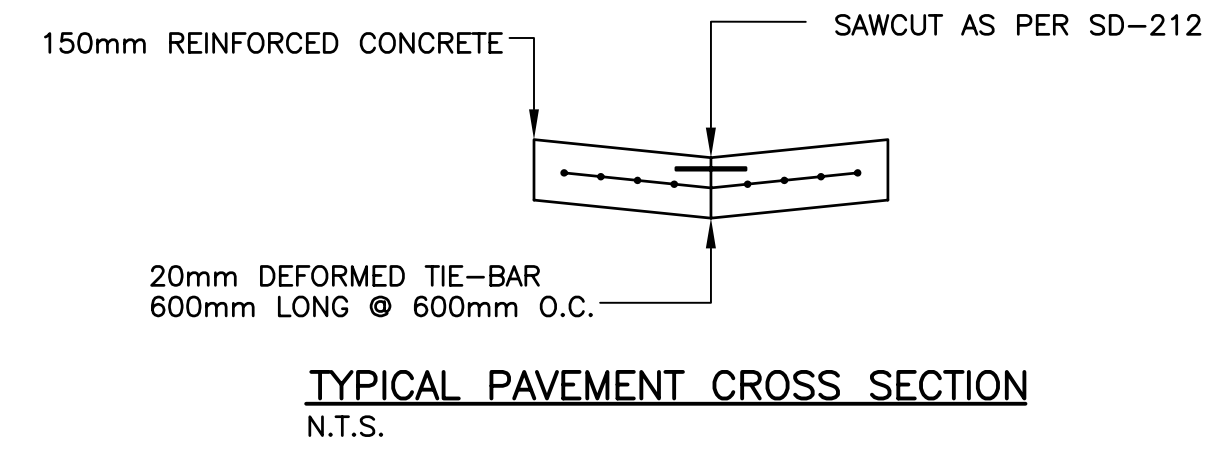


- NOTES:**
1. ISOLATE EXISTING HYDRO POLES AS DIRECTED BY CONTRACT ADMINISTRATOR
  2. RENEW EXISTING APPROACHES AS DIRECTED BY CONTRACT ADMINISTRATOR
  3. MODIFIED BARRIER CURB TO BE USED FOR CURB RENEWAL AT RADII.

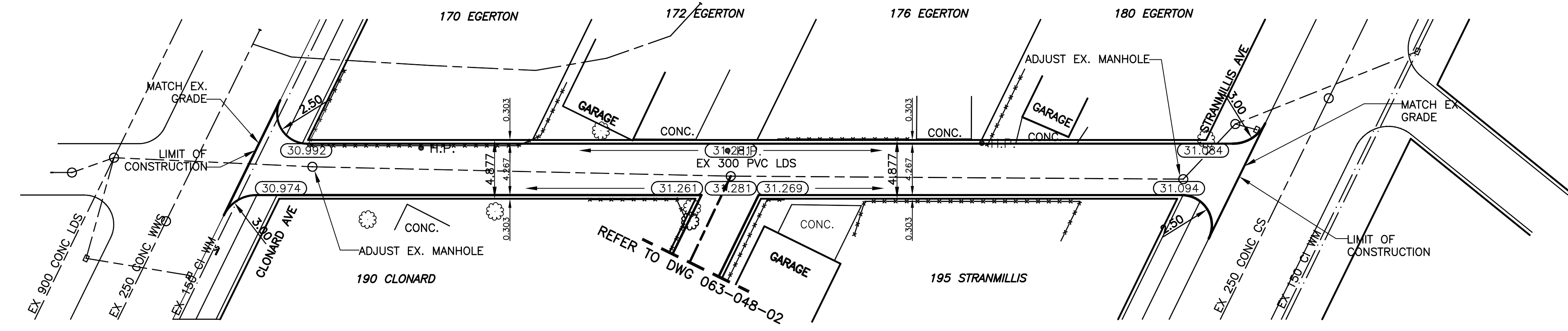
CHAINAGE ALONG CENTER OF ROW



TYPICAL LANE CROSS SECTION



TYPICAL PAVEMENT CROSS SECTION  
N.T.S.



**BENCHMARK:**  
 TBLT. IN 7.6 CONC. PILE IN MEDIAN OF ST. ANNE'S RD., 13.7m N. OF N.L. OF BLENDHEIM AVE., 16.2m W. OF E.L. OF ST. ANNE'S RD., 7.3m E. OF E.L. OF ST. MARY'S RD., & 0.3m E. OF W. EDGE OF MEDIAN.

METRIC  
 WHOLE NUMBERS INDICATE MILLIMETRES  
 DECIMALIZED NUMBERS INDICATE METRES

**APEGM**  
 Certificate of Authorization  
 SEG Engineering Inc.  
 No. 252 Expiry: April 30, 2008

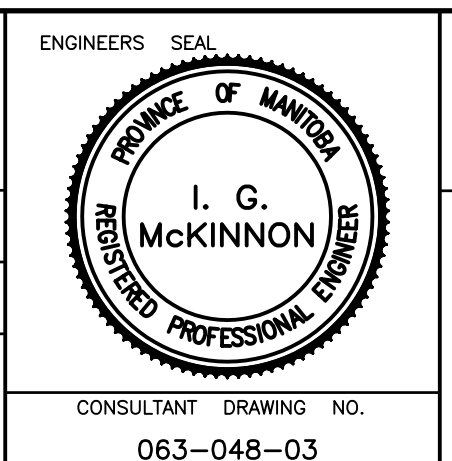
EXISTING	LEGEND - PLAN	PROPOSED	EXISTING	LEGEND - PLAN	PROPOSED	EXISTING	LEGEND - PROFILE	PROPOSED
○	WATERMAIN	—	—	HYDRO	—	—	CENTER LINE	—
⊕	HYDRANT VALVE	⊕	—	M.T.S. CONCRETE	—	—	EAST GUTTER LINE	—
—	LAND DRAINAGE SEWER	—	—	ASPHALT	—	—	WEST GUTTER LINE	—
—	WASTE WATER SEWER	—	—	PROPERTY LINE	—	—	WATERMAIN	—
○	MANHOLE	⊕	—	SURVEY BAR	—	—	VALVE	—
□	CATCH BASIN	■	—	CURB STOP	—	—	LAND DRAINAGE SEWER	—
△	CURB INLET	▲	—	C.B. LEAD	—	—	WASTE WATER SEWER	—
—	TRAFFIC SIGNAL	—	—	SIDEWALK	—	—	JUNCTIONS	—
—	STEAM HT.	—	—	FENCE LINE	—	—	CULVERT	—
—	GAS	—	—	ELEVATIONS	—	—	GARAGE	—
—		—	—		—	—		—

LOCATION APPROVED	B.M. ELEV.	CWM: 54-002 231.653
SUPV. U/G STRUCTURES	DATE	
NOTE:	LOCATION OF UNDERGROUND STRUCTURES AS SHOWN ARE BASED ON THE BEST INFORMATION AVAILABLE BUT NO GUARANTEE IS GIVEN THAT ALL EXISTING UTILITIES ARE SHOWN OR THAT THE GIVEN LOCATIONS ARE EXACT. CONFIRMATION OF EXISTENCE AND EXACT LOCATION OF ALL SERVICES MUST BE OBTAINED FROM THE INDIVIDUAL UTILITIES BEFORE PROCEEDING WITH CONSTRUCTION.	
NO.	REVISIONS	DATE BY

**SEG ENGINEERING INC.**  
 200 TACHE AVENUE  
 WINNIPEG, MANITOBA  
 (204)-233-2113

DESIGNED BY	S.M./R.H.	CHECKED BY	S.M.
DRAWN BY	R.H.	APPROVED BY	I.McK
HOR. SCALE:	1:250	RELEASED FOR CONSTRUCTION	
VERT. SCALE:	1:10	DATE	

CONSULTANT DRAWING NO. 063-048-03



**THE CITY OF WINNIPEG**  
 PUBLIC WORKS DEPARTMENT

2007 LOCAL IMPROVEMENTS  
**CLONARD/STRANMILLIS LANE LANE PAVEMENT**  
 FROM STATION 1+00 S.P. LINE OF CLONARD AVE.  
 TO STATION 1+74.646 N.P. LINE OF STRANMILLIS AVE

CITY DRAWING NO. SHEET 3 OF 3  
**344-2007**