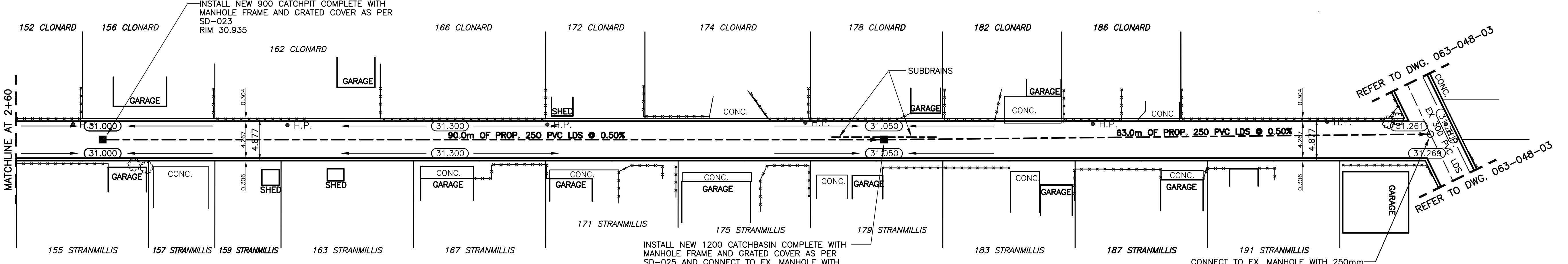
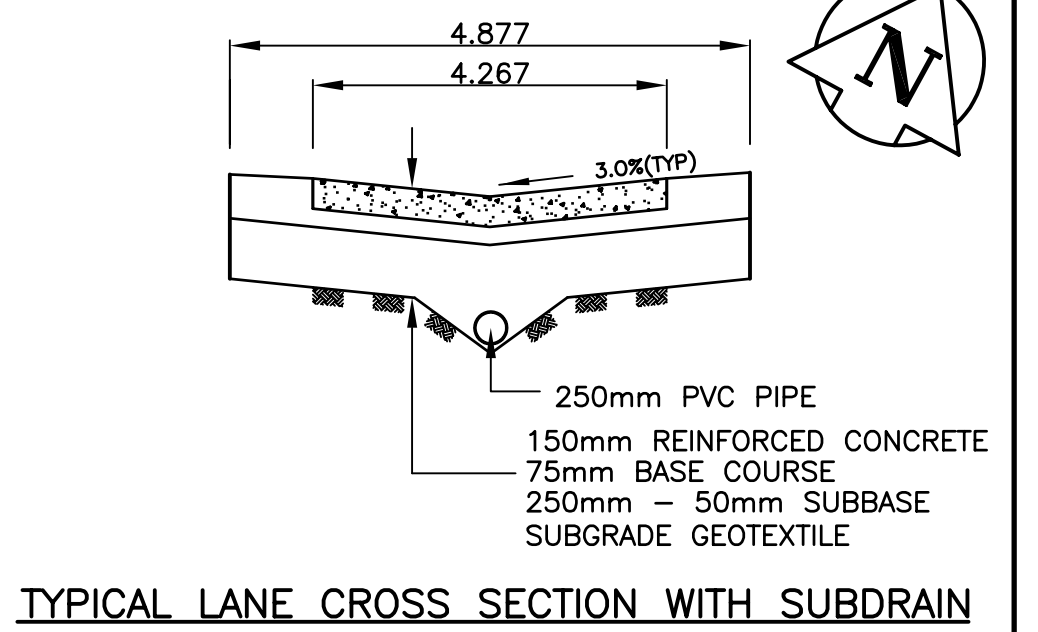
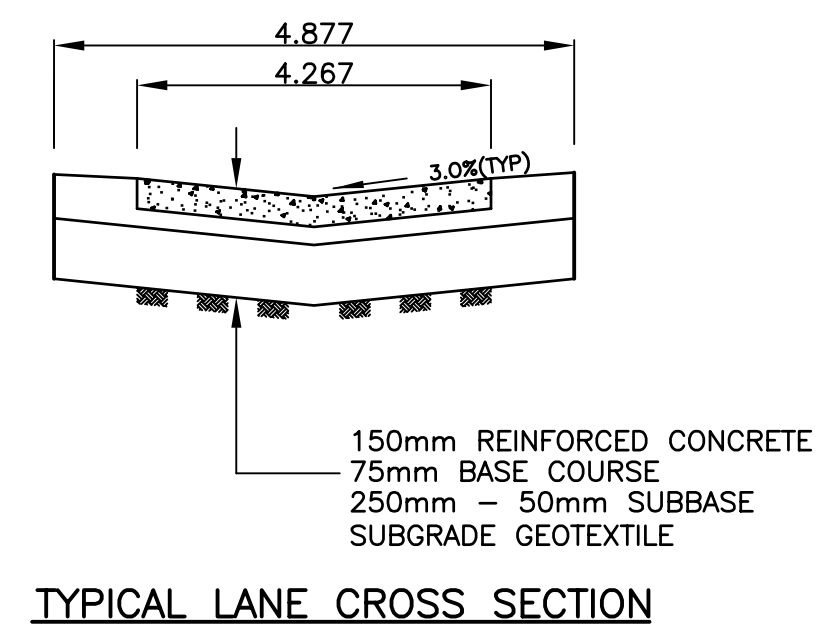
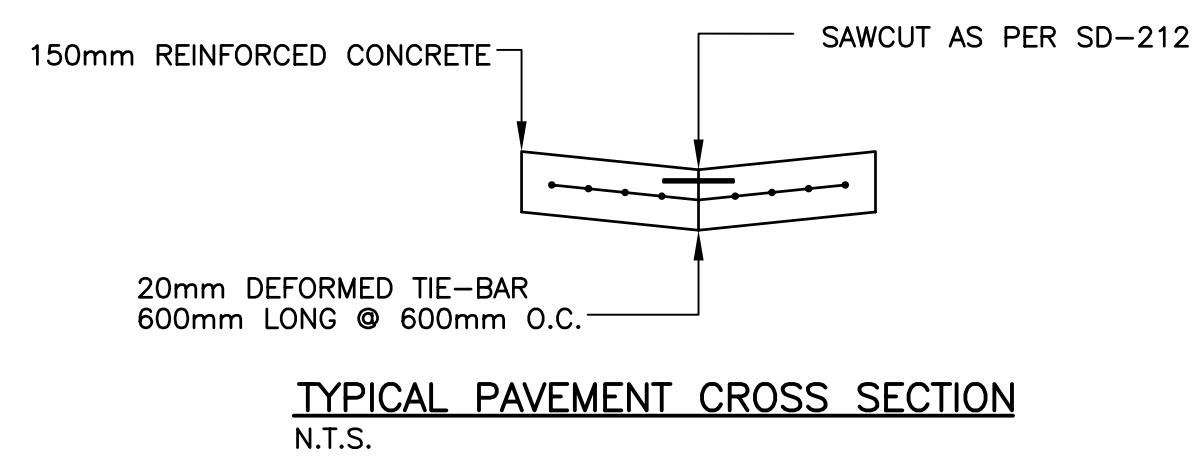


- NOTES:**
- ISOLATE EXISTING HYDRO POLES AS DIRECTED BY CONTRACT ADMINISTRATOR
  - RENEW EXISTING APPROACHES AS DIRECTED BY CONTRACT ADMINISTRATOR
  - MODIFIED BARRIER CURB TO BE USED FOR CURB RENEWAL AT RADII.

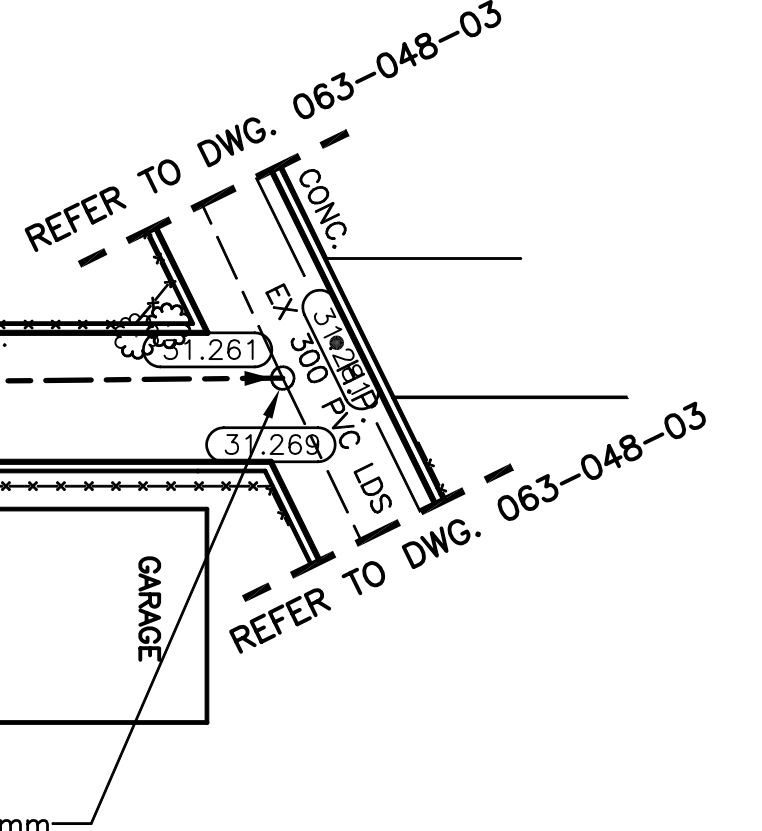
**CHAINAGE ALONG CENTER OF ROW**



**METRIC**  
WHOLE NUMBERS INDICATE MILLIMETRES  
DECIMALIZED NUMBERS INDICATE METRES

**BENCHMARK:**  
TBLT. IN 7.6 CONC. PILE IN MEDIAN OF ST. ANNE'S RD., 13.7m N. OF N.L. OF BLENDHEIM AVE., 16.2m W. OF E.L. OF ST. ANNE'S RD., 7.3m E. OF E.L. OF ST. MARY'S RD., & 0.3m E. OF W. EDGE OF MEDIAN.

INSTALL PVC SUB DRAINS BETWEEN STA. 3+54 AND 3+66



**APEGM**  
Certificate of Authorization  
SEG Engineering Inc.  
No. 252 Expiry: April 30, 2008

WATERMAIN	HYDRANT VALVE	LAND DRAINAGE SEWER	WASTE WATER SEWER	MANHOLE	CATCH BASIN	CURB INLET	TRAFFIC SIGNAL	STEAM HT.	GAS	EXISTING	LEGEND - PLAN	PROPOSED	EXISTING	LEGEND - PLAN	PROPOSED	EXISTING	LEGEND - PROFILE	PROPOSED
---	+	---	---	○	□	△	---	---	---	---	---	---	---	---	---	---	---	---
---	+	---	---	○	□	△	---	---	---	---	---	---	---	---	---	---	---	---
---	+	---	---	○	□	△	---	---	---	---	---	---	---	---	---	---	---	---

**LOCATION APPROVED**

SUPV.	U/G	STRUCTURES	DATE

**NOTE:**  
LOCATION OF UNDERGROUND STRUCTURES AS SHOWN ARE BASED ON THE BEST INFORMATION AVAILABLE BUT NO GUARANTEE IS GIVEN THAT ALL EXISTING UTILITIES ARE SHOWN OR THAT THE GIVEN LOCATIONS ARE CORRECT. CONFIRMATION OF EXISTENCE AND EXACT LOCATION OF ALL SERVICES MUST BE OBTAINED FROM THE INDIVIDUAL UTILITIES BEFORE PROCEEDING WITH CONSTRUCTION.

**SEG ENGINEERING INC.**  
200 TACHE AVENUE  
WINNIPEG, MANITOBA  
(204)-233-2113

DESIGNED BY	S.M./R.H.	CHECKED BY	S.M.
DRAWN BY	R.H.	APPROVED BY	I.McK
HOR. SCALE:	1:250	RELEASED FOR CONSTRUCTION	
VERT. SCALE:	1:10	DATE	

DATE: JUNE 2007

**PROVINCE OF MANITOBA REGISTERED PROFESSIONAL ENGINEER**  
I. G. McKINNON  
CONSULTANT DRAWING NO. 063-048-02

**THE CITY OF WINNIPEG DEPARTMENT**

**2007 LOCAL IMPROVEMENTS CLONARD/STRANMILLIS LANE PAVEMENT**  
FROM MATCHLINE AT STATION 2+60 TO STATION 4+21.500 NEW LANE INTERSECTION

CITY DRAWING NO. SHEET 2 OF 3  
**344-2007**