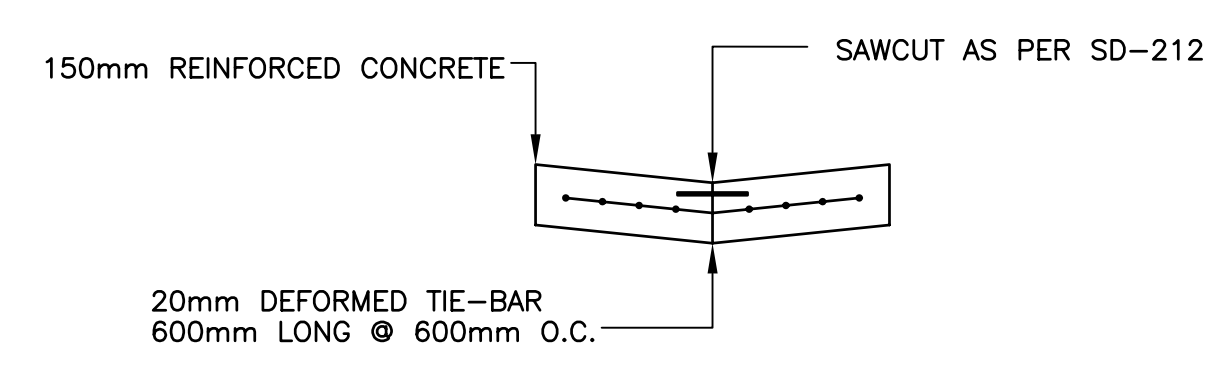
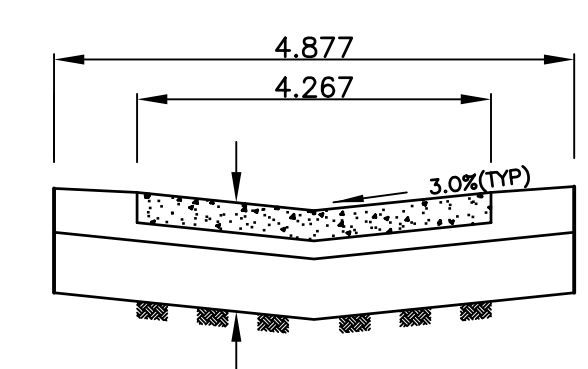


- NOTES:**
- ISOLATE EXISTING HYDRO POLES AS DIRECTED BY CONTRACT ADMINISTRATOR
 - RENEW EXISTING APPROACHES AS DIRECTED BY CONTRACT ADMINISTRATOR
 - MODIFIED BARRIER CURB TO BE USED FOR CURB RENEWAL AT RADII.

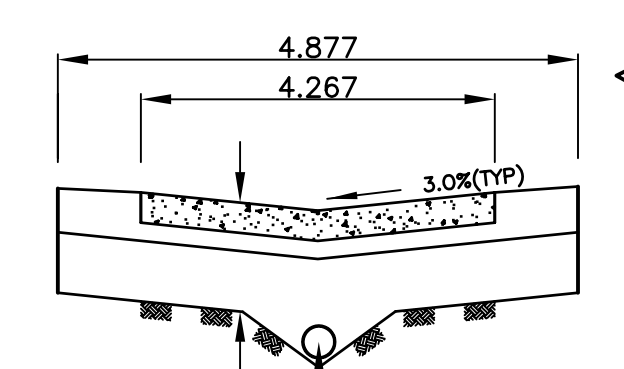
CHAINAGE ALONG CENTER OF ROW



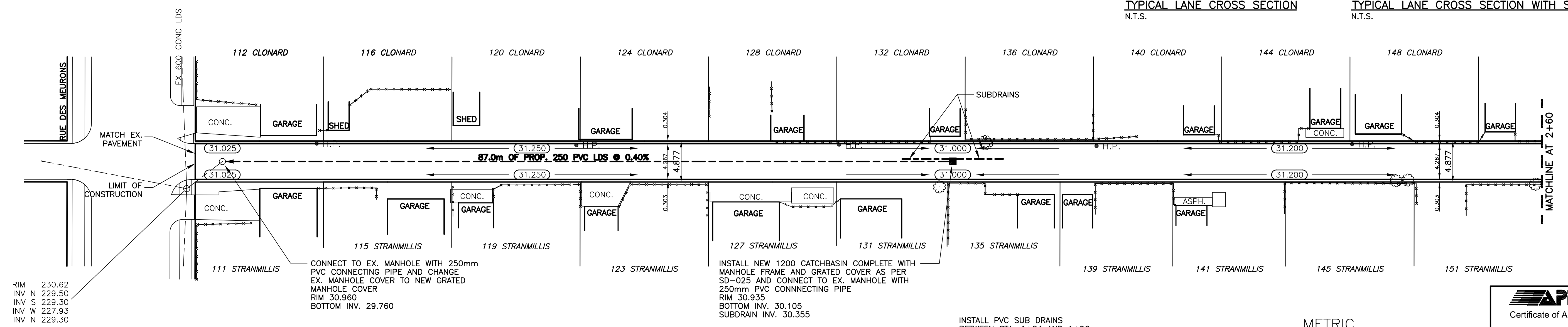
TYPICAL PAVEMENT CROSS SECTION
N.T.S.



TYPICAL LANE CROSS SECTION
N.T.S.



TYPICAL LANE CROSS SECTION WITH SUBDRAIN
N.T.S.



RIM 230.62
INV N 229.50
INV S 229.30
INV W 227.93
INV N 229.30

CONNECT TO EX. MANHOLE WITH 250mm PVC CONNECTING PIPE AND CHANGE EX. MANHOLE COVER TO NEW GRATED MANHOLE COVER
RIM 30.960
BOTTOM INV. 29.760

INSTALL NEW 1200 CATCHBASIN COMPLETE WITH MANHOLE FRAME AND GRATED COVER AS PER SD-025 AND CONNECT TO EX. MANHOLE WITH 250mm PVC CONNECTING PIPE
RIM 30.935
BOTTOM INV. 30.105
SUBDRAIN INV. 30.355

INSTALL PVC SUB DRAINS BETWEEN STA. 1+84 AND 1+96

BENCHMARK:
TBLT IN 7.6 CONC. PILE IN MEDIAN OF ST. ANNE'S RD., 13.7m N. OF N.L. OF BLENHEIM AVE., 16.2m W. OF E.L. OF ST. ANNE'S RD., 7.3m E. OF E.L. OF ST. MARY'S RD., & 0.5m E. OF W. EDGE OF MEDIAN.

METRIC
WHOLE NUMBERS INDICATE MILLIMETRES
DECIMALIZED NUMBERS INDICATE METRES



EXISTING	LEGEND - PLAN	PROPOSED	EXISTING	LEGEND - PLAN	PROPOSED	EXISTING	LEGEND - PROFILE	PROPOSED
---	WATERMAIN	---	---	HYDRO	---	---	CENTER LINE	---
---	HYDRANT	---	---	M.T.S.	---	---	NORTH GUTTER LINE	---
---	VALVE	---	---	CONCRETE	---	---	SOUTH GUTTER LINE	---
---	LAND DRAINAGE SEWER	---	---	ASPHALT	---	---	WATERMAIN	---
---	WASTE WATER SEWER	---	---	PROPERTY LINE	---	---	VALVE	---
---	MANHOLE	---	---	SURVEY BAR	---	---	LAND DRAINAGE SEWER	---
---	CATCH BASIN	---	---	CURB STOP	---	---	WASTE WATER SEWER	---
---	CURB INLET	---	---	C.B. LEAD	---	---	JUNCTIONS	---
---	TRAFFIC SIGNAL	---	---	SIDEWALK	---	---	CULVERT	---
---	STEAM HT.	---	---	FENCE LINE	---	---	ASPH./CONC. PAD	---
---	GAS	---	---	ELEVATIONS	---	---	GARAGE PAD	---

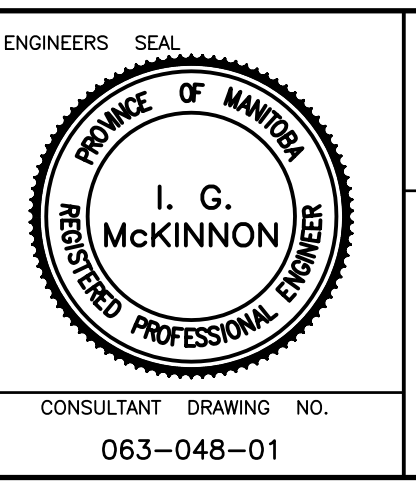
LOCATION APPROVED

SUPV.	U/G	STRUCTURES	DATE

NOTE:
LOCATION OF UNDERGROUND STRUCTURES AS SHOWN ARE BASED ON THE BEST INFORMATION AVAILABLE BUT NO GUARANTEE IS GIVEN THAT ALL EXISTING UTILITIES ARE SHOWN OR THAT THE GIVEN LOCATIONS ARE EXACT. CONFIRMATION OF EXISTENCE AND EXACT LOCATION OF ALL SERVICES MUST BE OBTAINED FROM THE INDIVIDUAL UTILITIES BEFORE PROCEEDING WITH CONSTRUCTION.

SEG ENGINEERING INC.
200 TACHE AVENUE
WINNIPEG, MANITOBA
(204)-233-2113

DESIGNED BY: R.H./S.M.
CHECKED BY: S.M.
DRAWN BY: R.H.
APPROVED BY: I.McK
HOR. SCALE: 1:250
VERT. SCALE: 1:10
RELEASED FOR CONSTRUCTION: _____
DATE: JUNE 2007



THE CITY OF WINNIPEG
PUBLIC WORKS DEPARTMENT

2007 LOCAL IMPROVEMENTS
CLONARD/STRANMILLIS LANE
LANE PAVEMENT
FROM RUE DES MEURONS
TO MATCHLINE AT STATION 2+60

CITY DRAWING NO. SHEET 1 OF 3
344-2007