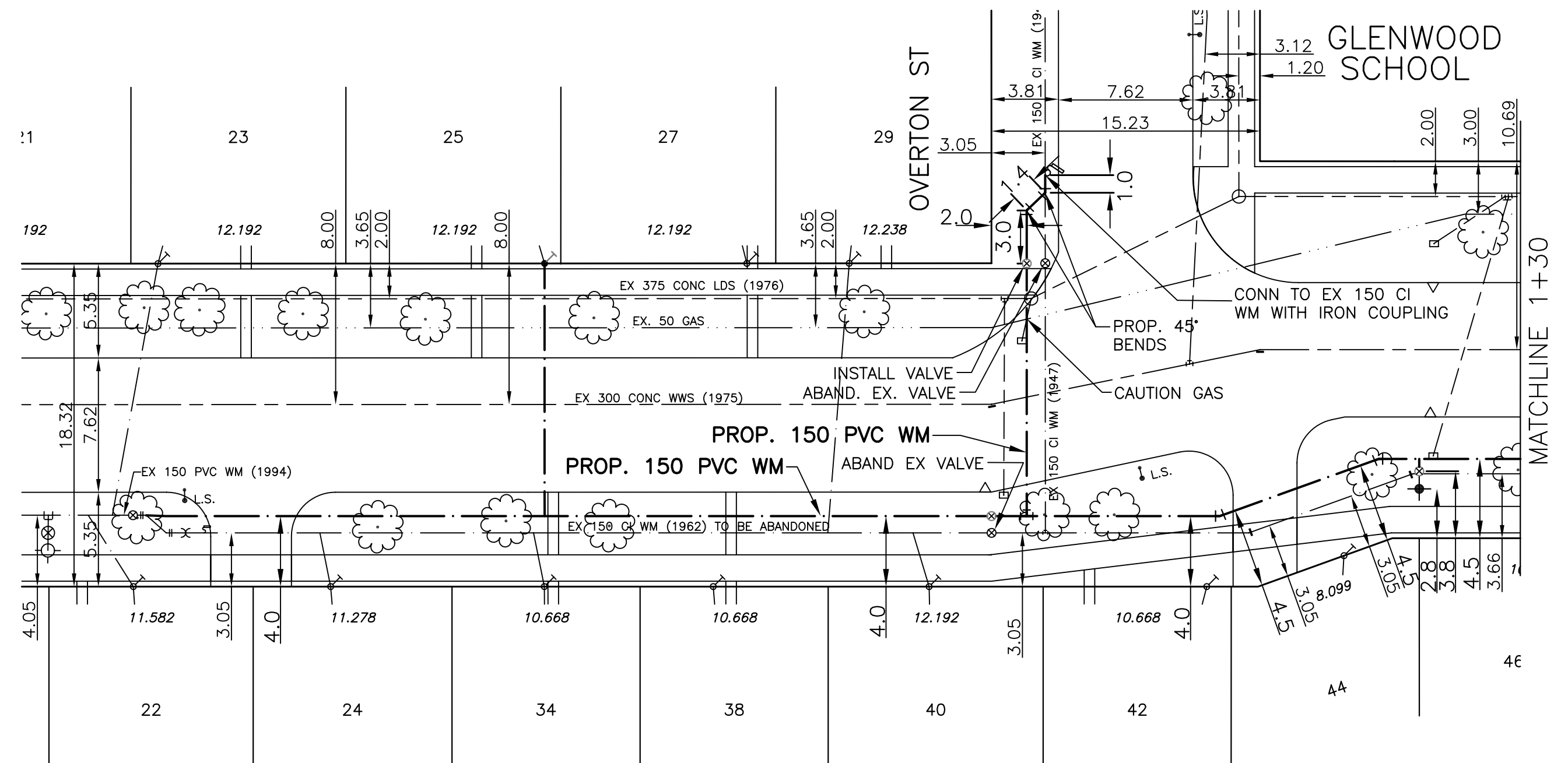
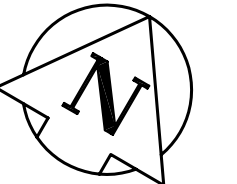


CHAINAGE ALONG NORTH PROPERTY LINE OF BLENHEIM AVENUE

BLenheim AVENUE



* SERVICES TO BE RENEWED

NOTES:

1. ALL GATE VALVES ARE TO BE COUNTER-CLOCKWISE TO OPEN WITH A BLACK OPERATING NUT.
2. WATERMAIN TO BE INSTALLED BY TRENCHLESS METHODS.
3. BACKFILL IS CLASS 5 WITHIN BOULEVARD AND CLASS 3 WHEN WITHIN PAVEMENT/SIDEWALK OR WHEN WITHIN 1.0m OF PAVEMENT OR SIDEWALK.
4. WATER SERVICES ARE 19mm UNLESS OTHERWISE NOTED.
5. MINIMUM COVER TO TOP OF WATERMAIN SHALL BE 2.4m.
6. LOCATION OF ALL SERVICES TO BE CONFIRMED IN FIELD.
7. EXPOSE EXISTING WATERMAIN TO CONFIRM DEPTH PRIOR TO CONSTRUCTION.
8. ALL LEAD SERVICES TO BE RENEWED TO PROPERTY LINE.
9. SERVICES TO BE RENEWED SHALL BE REPLACED FROM WATERMAIN TO PROPERTY LINE. ALL OTHERS TO BE RECONNECTED.

METRIC
WHOLE NUMBERS INDICATE MILLIMETRES
DECIMALIZED NUMBERS INDICATE METRES

APEGM
Certificate of Authorization
SEG Engineering Inc.
No. 252 Expiry: April 30, 2007

— — —	WATERMAIN	— — —	REDUCER	— — —	150mm W.M.	WATERMAIN	150mm W.M.
⊕	HYDRANT	+	PLUG	⊕	300mm L.D.S.	VALVE	300mm L.D.S.
⊗	VALVE	*	TRAFFIC SIGNAL	— — —	250mm W.W.S.	LAND DRAINAGE SEWER	300mm L.D.S.
— — —	LAND DRAINAGE SEWER	— — —	GAS	— — —	250mm W.W.S.	WASTE WATER SEWER	250mm W.W.S.
— — —	WASTE WATER SEWER	— — —	HYDRO	— — —	— — —	JUNCTIONS	— — —
○	MANHOLE	●	M.T.S.	— — —	— — —	CULVERT	— — —
□	CATCH BASIN	⊕	SURVEY BAR	— — —	— — —	— — —	— — —
△	CURB INLET	▲	CURB STOP	— — —	— — —	— — —	— — —
⊕	TEE	⊕	C.B. LEAD	— — —	— — —	— — —	— — —
⊕	BEND	⊕	TREE	— — —	— — —	— — —	— — —
⊕	ANODE	⊕	LAMP STANDARD	— — —	— — —	— — —	— — —
— — —	EXISTING	— — —	LEGEND - PLAN	— — —	— — —	— — —	— — —
— — —	LEGEND - PLAN	— — —	PROPOSED	— — —	— — —	— — —	— — —
— — —	EXISTING	— — —	LEGEND - PLAN	— — —	— — —	— — —	— — —
— — —	LEGEND - PROFILE	— — —	PROPOSED	— — —	— — —	— — —	— — —
— — —	EXISTING	— — —	LEGEND - PROFILE	— — —	— — —	— — —	— — —
— — —	LEGEND - PROFILE	— — —	PROPOSED	— — —	— — —	— — —	— — —

LOCATION APPROVED

SUPV. U/G STRUCTURES DATE
NOTE:
LOCATION OF UNDERGROUND STRUCTURES AS SHOWN ARE BASED ON THE BEST INFORMATION AVAILABLE BUT NO GUARANTEE IS GIVEN THAT ALL EXISTING UTILITIES ARE SHOWN OR THAT THE GIVEN LOCATIONS ARE EXACT. CONFIRMATION OF EXISTENCE AND EXACT LOCATION OF ALL SERVICES MUST BE OBTAINED FROM THE INDIVIDUAL UTILITIES BEFORE PROCEEDING WITH CONSTRUCTION.

B.M. ELEV.	CHBM: 54-002	ELEV	231.653
NO.	REVISIONS	DATE	BY
1	BID OPPORTUNITY 339-2007	JUNE 07	DJ

SEG ENGINEERING INC.
200 TACHE AVENUE
WINNIPEG, MANITOBA
(204)-233-2113

DESIGNED BY DJ
CHECKED BY SM
DRAWN BY DJ
APPROVED BY IMCK
HOR. SCALE: 1:250
VERT. SCALE: 1:50
RELEASED FOR ORIGINAL CONSTRUCTION
SIGNED BY K. ZUREK P. ENG
DATE MAY 25, 2007

ENGINEERS SEAL
CONSULTANT DRAWING NO. 069-022-05

THE CITY OF WINNIPEG
WATER AND WASTE DEPARTMENT

2007 CAPITAL WORKS
WATERMAIN RENEWAL
BLenheim AVENUE
50M WEST OF OVERTON STREET
TO 15M EAST OF OVERTON STREET

SHEET 1 OF 2
CITY DRAWING NO. D-9191