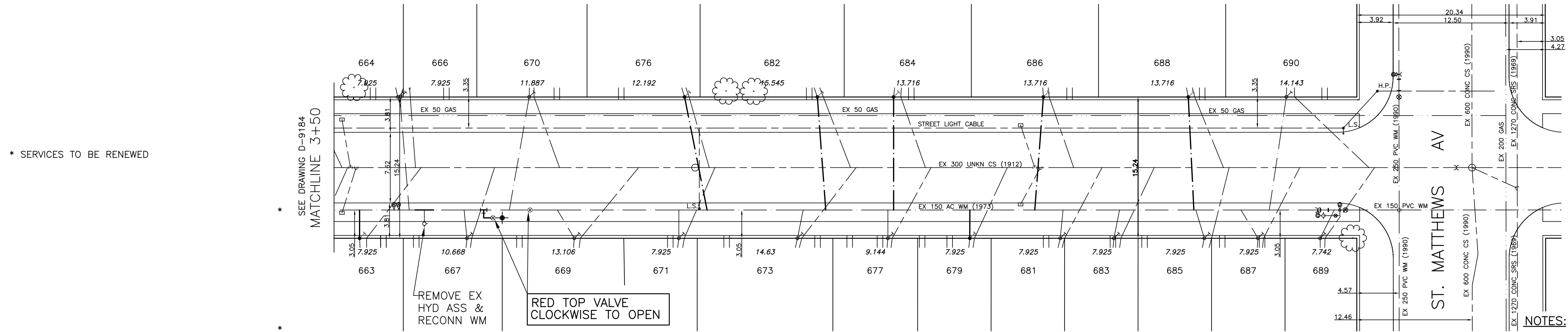
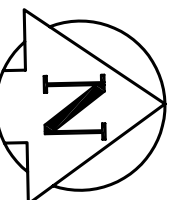


CHAINAGE ALONG EAST PROPERTY
LINE OF GARFIELD STREET
GARFIELD STREET NORTH



- NOTES:**
1. ALL GATE VALVES ARE TO BE CLOCKWISE TO OPEN WITH A RED OPERATING NUT.
 2. WATERMAIN TO BE INSTALLED BY TRENCHLESS METHODS.
 3. BACKFILL IS CLASS 5 WITHIN BOULEVARD AND CLASS 3 WHEN WITHIN PAVEMENT/SIDEWALK OR WHEN WITHIN 1.0m OF PAVEMENT OR SIDEWALK.
 4. WATER SERVICES ARE 19mm UNLESS OTHERWISE NOTED.
 5. MINIMUM COVER TO TOP OF WATERMAIN SHALL BE 2.4m.
 6. LOCATION OF ALL SERVICES TO BE CONFIRMED IN FIELD.
 7. EXPOSE EXISTING WATERMAIN TO CONFIRM DEPTH PRIOR TO CONSTRUCTION.
 8. ALL LEAD SERVICES TO BE RENEWED TO PROPERTY LINE.
 9. SERVICES TO BE RENEWED SHALL BE REPLACED FROM WATERMAIN TO PROPERTY LINE. ALL OTHERS TO BE RECONNECTED.

METRIC
WHOLE NUMBERS INDICATE MILLIMETRES
DECIMALIZED NUMBERS INDICATE METRES

— — —	WATERMAIN	— — —	REDUCER	— — —	150mm W.M.	WATERMAIN	150mm W.M.
⊕	HYDRANT	+	PLUG	⊕	300mm L.D.S.	VALVE	300mm L.D.S.
⊗	VALVE	*	TRAFFIC SIGNAL	⊗	250mm W.W.S.	LAND DRAINAGE SEWER	300mm L.D.S.
— — —	LAND DRAINAGE SEWER	— — —	GAS	— — —	250mm W.W.S.	WASTE WATER SEWER	250mm W.W.S.
— — —	WASTE WATER SEWER	— — —	HYDRO	— — —	— — —	JUNCTIONS	— — —
○	MANHOLE	●	M.T.S.	— — —	— — —	CULVERT	— — —
□	CATCH BASIN	⊕	SURVEY BAR	— — —	— — —	— — —	— — —
△	CURB INLET	▲	CURB STOP	— — —	— — —	— — —	— — —
⊕	TEE	⊕	C.B. LEAD	— — —	— — —	— — —	— — —
⊕	BEND	⊕	TREE	— — —	— — —	— — —	— — —
⊕	ANODE	⊕	LAMP STANDARD	— — —	— — —	— — —	— — —
— — —	EXISTING	— — —	LEGEND - PLAN	— — —	PROPOSED	EXISTING	LEGEND - PROFILE
— — —	LEGEND - PLAN	PROPOSED	EXISTING	LEGEND - PLAN	PROPOSED	EXISTING	LEGEND - PROFILE

LOCATION APPROVED

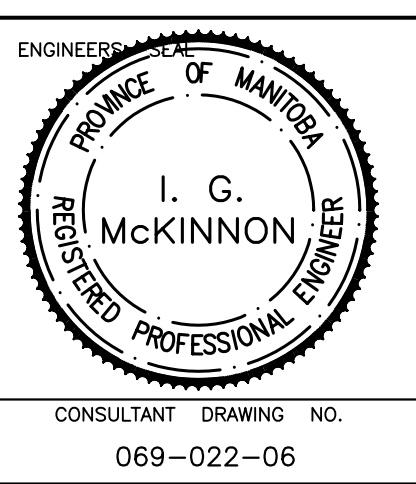
SUPV. U/G STRUCTURES DATE

NOTE:
LOCATION OF UNDERGROUND STRUCTURES AS SHOWN ARE BASED ON THE BEST INFORMATION AVAILABLE BUT NO GUARANTEE IS GIVEN THAT ALL EXISTING UTILITIES ARE SHOWN OR THAT THE GIVEN LOCATIONS ARE EXACT. CONFIRMATION OF EXISTENCE AND EXACT LOCATION OF ALL SERVICES MUST BE OBTAINED FROM THE INDIVIDUAL UTILITIES BEFORE PROCEEDING WITH CONSTRUCTION.

B.M. ELEV.	CWB# 37-011	ELEV 232.668	
DESIGNED BY	DJ	CHECKED BY SM	
DRAWN BY	DJ	APPROVED BY ImcK	
HOR. SCALE:	1:250	RELEASED FOR ORIGINAL CONSTRUCTION	
VERT. SCALE:	1:50	SIGNED BY K. ZUREK P. ENG	
DATE	MAY 2007	DATE	
1	BID OPPORTUNITY 339-2007	MAY 07	DJ
NO.	REVISIONS	DATE	BY

SEG ENGINEERING INC.
200 TACHE AVENUE
WINNIPEG, MANITOBA
(204)-233-2113

DESIGNED BY DJ
CHECKED BY SM
DRAWN BY DJ
APPROVED BY ImcK
RELEASED FOR ORIGINAL CONSTRUCTION
SIGNED BY K. ZUREK P. ENG
DATE MAY 25, 2007



THE CITY OF WINNIPEG
WATER AND WASTE DEPARTMENT

2007 CAPITAL WORKS
WATERMAIN RENEWALS
GARFIELD STREET NORTH
250M NORTH OF WOLEVER AVENUE
TO ST. MATTHEWS AVENUE

SHEET 3 OF 3
CITY DRAWING NO.
D-9185

CONSULTANT DRAWING NO. 069-022-06