

**WARNING**

IF POWER EQUIPMENT OR EXPLOSIVES ARE TO BE USED FOR EXCAVATION ON THIS PROJECT THE CONTRACTOR MUST:  
 1) NOTIFY THE GAS COMPANY OF THE PROPOSED LOCATION OF EXCAVATION.  
 2) TAKE PRECAUTION TO AVOID DAMAGE TO GAS COMPANY INSTALLATIONS.  
 SEE PROVINCIAL REGULATION 140/92 FOR DETAILS.

**METRIC**

WHOLE NUMBERS INDICATE MILLIMETRES  
 DECIMALIZED NUMBERS INDICATE METRES

**BENCH MARK:** S.E. cor. Notre Dame Ave. & Beverley St., Tblt. in N. conc. foundation No. 810 Notre Dame Ave., 2m E. & 0.5m below brick of N.W. cor. of bldg.

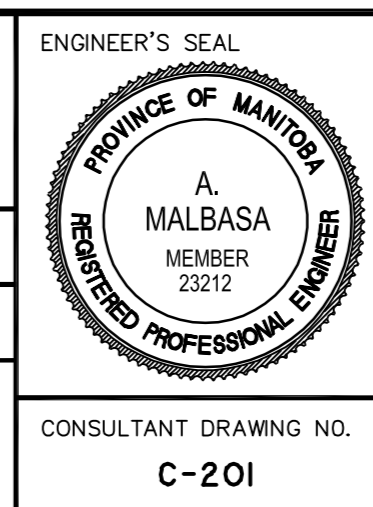


EXISTING	LEGEND-PLAN	PROPOSED	EXISTING	LEGEND-PLAN	PROPOSED	EXISTING	LEGEND-PROFILE	PROPOSED
150 WM	WATERMAIN	150 WM	HYDRO	M.T.S.	150 WM	WATERMAIN	150 WM	HYDRANT, VALVE
300 LBS	LAND DRAINAGE SEWER	300 LBS	CONCRETE	300 LBS	300 LBS	LAND DRAINAGE SEWER	300 LBS	LAND DRAINAGE SEWER
250 WWS	WASTE WATER SEWER	250 WWS	ASPHALT	250 WWS	250 WWS	WASTE WATER SEWER	250 WWS	WASTE WATER SEWER
MANHOLE	MANHOLE	MANHOLE	PROPERTY LINE	PROPERTY LINE	PROPERTY LINE	NORTH OR WEST GUTTER	NORTH OR WEST GUTTER	NORTH OR WEST GUTTER
CATCH BASIN	CATCH BASIN	CATCH BASIN	SURVEY BAR	SURVEY BAR	SURVEY BAR	SOUTH OR EAST GUTTER	SOUTH OR EAST GUTTER	SOUTH OR EAST GUTTER
CURB INLET	CURB INLET	CURB INLET	DITCH	DITCH	DITCH	NORTH OR WEST IP	NORTH OR WEST IP	NORTH OR WEST IP
JUNCTIONS	JUNCTIONS	JUNCTIONS	ELEVATION	ELEVATION	ELEVATION	SOUTH OR EAST IP	SOUTH OR EAST IP	SOUTH OR EAST IP
CULVERT	CULVERT	CULVERT	SIDEWALK RAMP	SIDEWALK RAMP	SIDEWALK RAMP	NORTH OR WEST DITCH	NORTH OR WEST DITCH	NORTH OR WEST DITCH
GAS	GAS	GAS	SOUTH OR EAST DITCH	SOUTH OR EAST DITCH	SOUTH OR EAST DITCH	SOUTH OR EAST DITCH	SOUTH OR EAST DITCH	SOUTH OR EAST DITCH

LOCATION APPROVED UNDERGROUND STRUCTURES	DATE
NO. REVISIONS	DATE BY

NOTE:  
 LOCATION OF UNDERGROUND STRUCTURES AS SHOWN ARE BASED ON THE BEST INFORMATION AVAILABLE BUT NO GUARANTEE IS GIVEN THAT ALL EXISTING UTILITIES ARE SHOWN OR THAT THE GIVEN LOCATIONS ARE EXACT. CONFIRMATION OF EXISTENCE AND EXACT LOCATION OF ALL SERVICES MUST BE OBTAINED FROM THE INDIVIDUAL UTILITIES BEFORE PROCEEDING WITH CONSTRUCTION.

<b>Stantec Consulting Ltd.</b> 905 Waverley Street, Winnipeg, Manitoba Tel 204-489-5900 Fax 204-453-9012	
DESIGNED BY	B.L.S.
CHECKED BY	V.M.M.
DRAWN BY	J.M.B.
APPROVED BY	A.M.
HOR. SCALE:	1:250
VERTICAL:	1:10
ISSUED FOR TENDER	07.03.27 J.M.B.
ISSUED FOR CLIENT REVIEW	07.03.02 J.M.B.
RELEASED FOR CONSTRUCTION:	



**THE CITY OF WINNIPEG**  
 Winnipeg ENGINEERING DIVISION

**TORONTO STREET**  
 WELLINGTON AVENUE TO NOTRE DAME AVENUE  
 WELLINGTON AVENUE TO STA. 2+50  
 2007 STREET RECONSTRUCTION

SHEET OF 6  
 CAD FILE DRAWING NUMBER 04570c-201-675.dwg  
 CITY DRAWING NUMBER

CONSULTANT DRAWING NO. C-201

V:\117\winn\11704570\winn\Sheet\M570-201-675.dwg  
 2007-05-03 02:29PM By: erenan