

**LAURA STREET
ALEXANDER AVENUE TO LOGAN AVENUE
2007 CITY OF WINNIPEG
REGIONAL AND RESIDENTIAL STREETS PROGRAM**

Prepared for
Stantec Consulting Ltd.
905 Waverley Street
Winnipeg, Manitoba
R3T 5P4

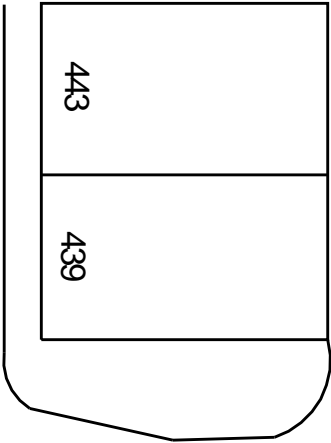
Prepared by
The National Testing Laboratories Limited
199 Henlow Bay
Winnipeg, Manitoba
R3Y 1G4

January 30, 2007

**2007 City of Winnipeg
Regional and Residential Streets Program
Geotechnical Investigation
Laura Street
Alexander Avenue to Logan Avenue**

Testhole ID	Testhole Location	Pavement Surface		Pavement Structure Material		Sample Description	Sample Depth (m)	Moisture Content (%)	Particle Size Analysis				Atterberg Limits		
		Type	Thickness (mm)	Type	Thickness (mm)				Gravel (%)	Sand (%)	Silt (%)	Clay (%)	Liquid Limit	Plastic Limit	Plasticity Index
TH1	1.6 m N of N property line of 253 Laura St., 1.2 m W of E curb	Asphalt/Concrete	60/165	N/A	N/A	Clayey Silt	1.5	21.2	0.0	7.4	69.7	22.9	21	17	4
TH2	5.2 m N of N property line of 263 Laura St., 1.8 m E of W curb	Asphalt/Concrete	65/195	N/A	N/A	Clay	1.8	36.1	0.0	1.5	19.2	79.3	73	19	54

Alexander Avenue

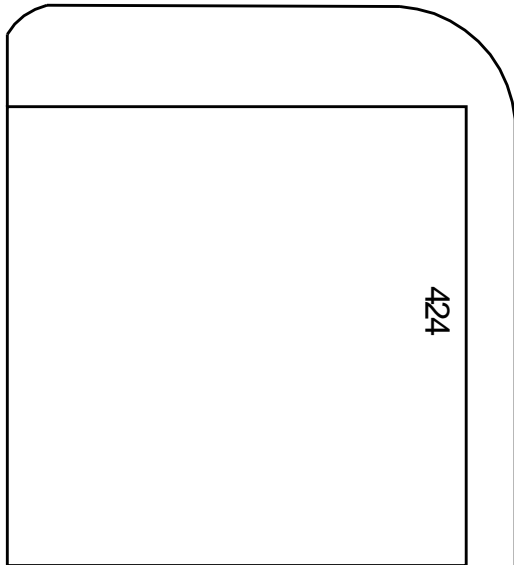
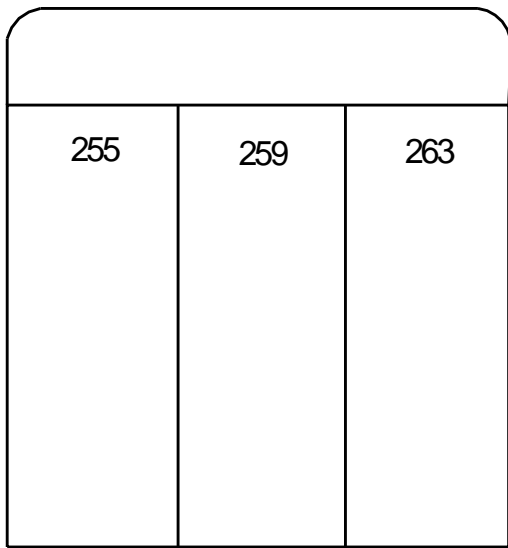
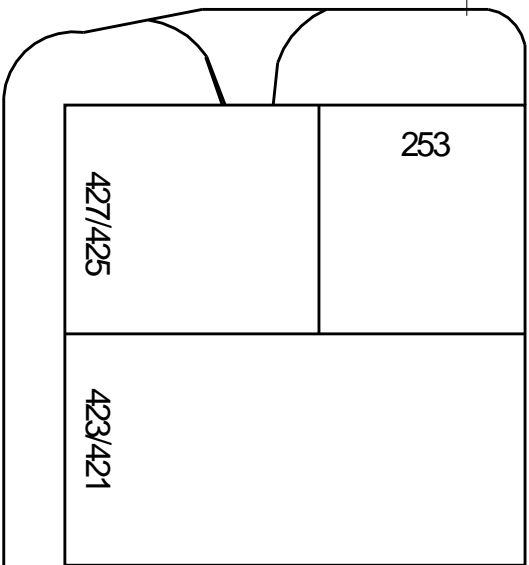


Logan Avenue

TH1

Laura Street

TH2



**THE
NATIONAL
TESTING
LABORATORIES
LIMITED**
Established in 1923

Project No.: STA-701

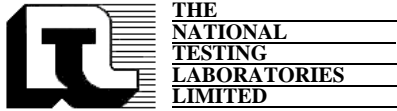
Drawn By: SD

Date: Jan. 29, 2007

Scale: NTS

Testhole Location Plan
2007 Regional and Residential Streets Program
Laura Street
Logan Avenue to Alexander Avenue

2007 City of Winnipeg
Regional and Residential Streets Program
Laura Street
Alexander Avenue to Logan Avenue



**VICTOR STREET
ST. MATTHEWS AVENUE TO PORTAGE AVENUE
2007 CITY OF WINNIPEG
REGIONAL AND RESIDENTIAL STREETS PROGRAM**

Prepared for
Stantec Consulting Ltd.
905 Waverley Street
Winnipeg, Manitoba
R3T 5P4

Prepared by
The National Testing Laboratories Limited
199 Henlow Bay
Winnipeg, Manitoba
R3Y 1G4

January 30, 2007

**2007 City of Winnipeg
Regional and Residential Streets Program
Geotechnical Investigation
Victor Street
St. Matthews Avenue to Portage Avenue**

Testhole ID	Testhole Location	Pavement Surface		Pavement Structure Material		Sample Description	Sample Depth (m)	Moisture Content (%)	Particle Size Analysis				Atterberg Limits		
		Type	Thickness (mm)	Type	Thickness (mm)				Gravel (%)	Sand (%)	Silt (%)	Clay (%)	Liquid Limit	Plastic Limit	Plasticity Index
TH1	3.8 m S of N property line of 332 Victor St., 1.6 m E of W curb	Asphalt/Concrete	145/185	Granular	50	Clayey Silt	1.2	14.1	0.0	5.7	66.5	27.8	27	16	11
TH2	5.5 m N of S property line of 350 Victor St., 1.4 m W of E curb	Concrete	200	Limestone	870	Clay	1.8	33.2	0.0	1.2	11.7	87.1	84	22	62

TESTHOLE TH1



Project Name: 2007 Regional and Residential Streets Program

Date Drilled: January 18, 2007

Client: Stantec Consulting Ltd.

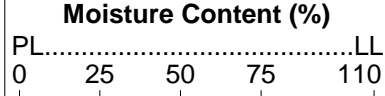
Depth of Testhole: 2.1 m

Site: Victor Street, St. Matthews Avenue to Portage Avenue

Logged by: Kurtis Kulchyski

Testhole Location: 3.8 m S of the N property line of 332 Victor St., 1.6 m E of the W curb

Subsurface Profile			Laboratory Testing					
Depth (m)	Symbol	Description	Moisture Content (%)		Gravel (%)	Sand (%)	Silt (%)	Clay (%)
			PL	LL				
0.0		Ground Surface						
		Asphalt						
		Concrete - freeze thaw damage at bottom of layer						
		Granular Fill - maximum 20 mm aggregate size						
0.5		Clay - brown, wet at the surface of the layer, moist below surface, soft to firm, high plasticity, trace silt - with silt below 0.6 m						
1.0		Clay						
		Clayey Silt - tan, moist, firm, low plasticity, some clay, trace fine grained sand						
1.5		Clay - brown, moist, firm, high plasticity, with silt layers - some silt below 1.7 m						
2.0		Clay						
2.5		End of testhole at 2.1 m below grade. No water seepage or soil sloughing were observed during or after the completion of drilling.						



Gravel (%)	Sand (%)	Silt (%)	Clay (%)
0.0	5.7	66.5	27.8

TESTHOLE TH2



Project Name: 2007 Regional and Residential Streets Program

Date Drilled: January 18, 2007

Client: Stantec Consulting Ltd.

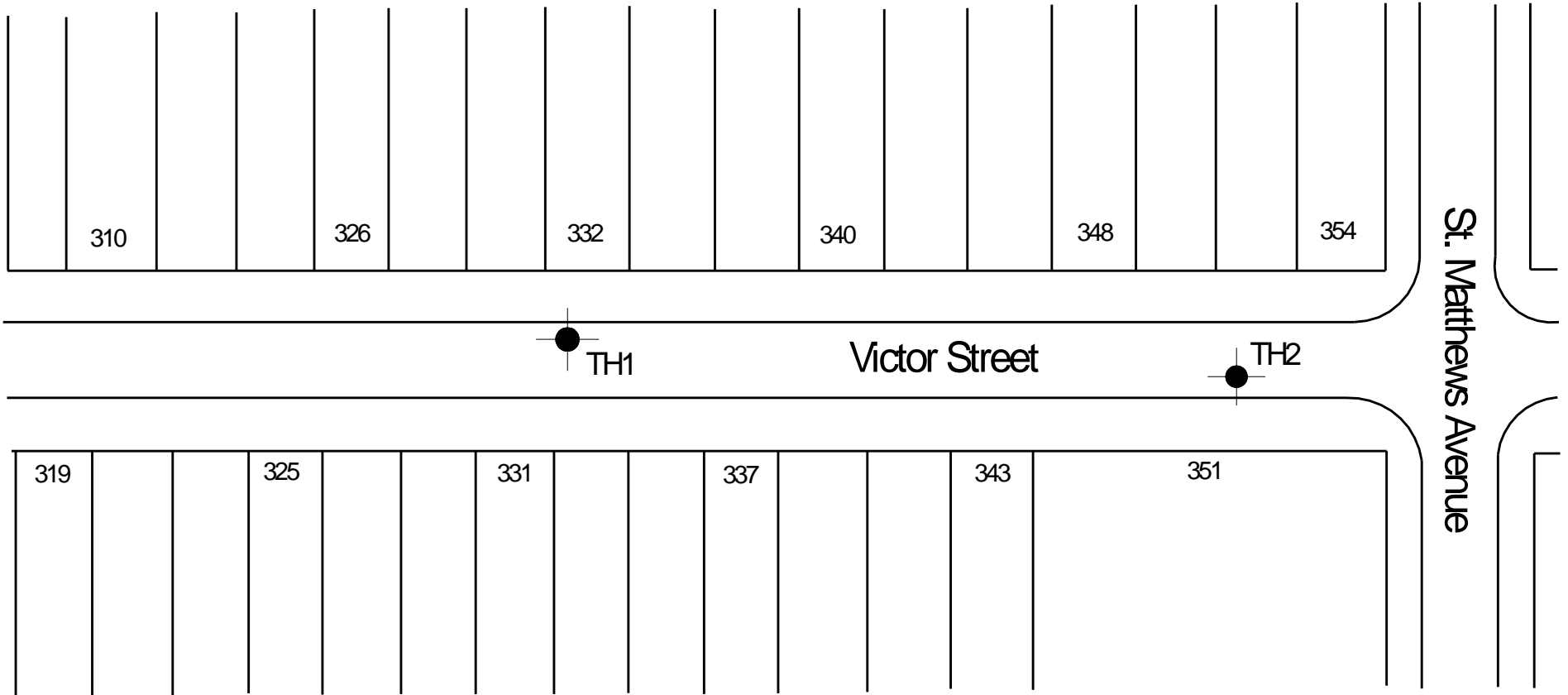
Depth of Testhole: 2.1 m

Site: Victor Street, St. Matthews Avenue to Portage Avenue

Logged by: Kurtis Kulchyski

Testhole Location: 5.5 m N of the S property line of 350 Victor St., 1.4 m W of the E curb

Subsurface Profile			Laboratory Testing							
Depth (m)	Symbol	Description	Moisture Content (%)				Gravel (%)	Sand (%)	Silt (%)	Clay (%)
			PL	LL	0	25				
0.0		Ground Surface								
0.0 - 0.5		Concrete								
0.5 - 1.0		Limestone Fill - top 150 mm consists of white limestone with a maximum aggregate size of 20 mm - rust/red limestone below 150 mm; maximum aggregate size could not be determined due to the grinding effect of the auger								
1.0 - 2.1		Clay - brown, moist, stiff to firm, high plasticity, trace silt								
2.1		End of testhole at 2.1 m below grade.								
2.5		No water seepage or soil sloughing were observed during or after the completion of drilling.								
							0.0	1.2	11.7	87.1



**THE
NATIONAL
TESTING
LABORATORIES
LIMITED**
Established in 1923

Project No.: STA-701

Drawn By: SD

Date: Jan. 29, 2007

Scale: NTS

Testhole Location Plan
2007 Regional and Residential Streets Program
Victor Street
St. Matthews Avenue to Portage Avenue

2007 City of Winnipeg
Regional and Residential Streets Program
Victor Street
St. Matthews Avenue to Portage Avenue



2007 City of Winnipeg
Regional and Residential Streets Program
Victor Street
St. Matthews Avenue to Portage Avenue



**TORONTO STREET
NOTRE DAME AVENUE TO WELLINGTON AVENUE
2007 CITY OF WINNIPEG
REGIONAL AND RESIDENTIAL STREETS PROGRAM**

Prepared for
Stantec Consulting Ltd.
905 Waverley Street
Winnipeg, Manitoba
R3T 5P4

Prepared by
The National Testing Laboratories Limited
199 Henlow Bay
Winnipeg, Manitoba
R3Y 1G4

January 30, 2007

TESTHOLE TH1



Project Name: 2007 Regional and Residential Streets Program

Date Drilled: January 18, 2007

Client: Stantec Consulting Ltd.

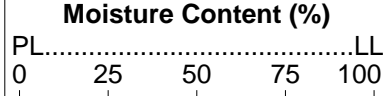
Depth of Testhole: 2.1 m

Site: Toronto Street, Notre Dame Avenue to Wellington Avenue

Logged by: Kurtis Kulchyski

Testhole Location: 1.3 m N of the N property line of 720 Toronto St., 1.5 m E of the W curb

Subsurface Profile			Laboratory Testing					
Depth (m)	Symbol	Description	Moisture Content (%)		Gravel (%)	Sand (%)	Silt (%)	Clay (%)
			PL	LL				
0.0		Ground Surface						
		Asphalt						
		Concrete						
		Granular Fill - 20 mm maximum aggregate size						
0.5		Clay - brown, moist, firm, high plasticity, trace thin silt layers						
1.0		Silt - tan, moist to dry, firm, low plasticity, some clay, trace fine grained sand						
1.5								
2.0		Clay - brown, moist, stiff to firm, high plasticity, trace silt						
2.5		End of testhole at 2.1 m below grade. No water seepage or soil sloughing were observed during or after the completion of drilling.						



Gravel (%)	Sand (%)	Silt (%)	Clay (%)
0.0	5.7	72.9	21.4

TESTHOLE TH2



Project Name: 2007 Regional and Residential Streets Program

Date Drilled: January 18, 2007

Client: Stantec Consulting Ltd.

Depth of Testhole: 2.1 m

Site: Toronto Street, Notre Dame Avenue to Wellington Avenue

Logged by: Kurtis Kulchyski

Testhole Location: 1.6 m N of the S property line of 757 Toronto St., 1.6 m W of the E curb

Subsurface Profile			Laboratory Testing					
Depth (m)	Symbol	Description	Moisture Content (%)		Gravel (%)	Sand (%)	Silt (%)	Clay (%)
			PL	LL				
0.0		Ground Surface						
		Asphalt						
		Concrete						
		Granular Fill - 20 mm maximum aggregate size						
0.5		Clay - brown, moist, soft to firm, high plasticity, with silt layers - trace silt below 1.2 m						
1.0								
1.5								
2.0					0.0	0.4	9.4	90.2
2.1		End of testhole at 2.1 m below grade.						
2.5		No water seepage or soil sloughing were observed during or after the completion of drilling.						

TESTHOLE TH3



Project Name: 2007 Regional and Residential Streets Program

Date Drilled: January 18, 2007

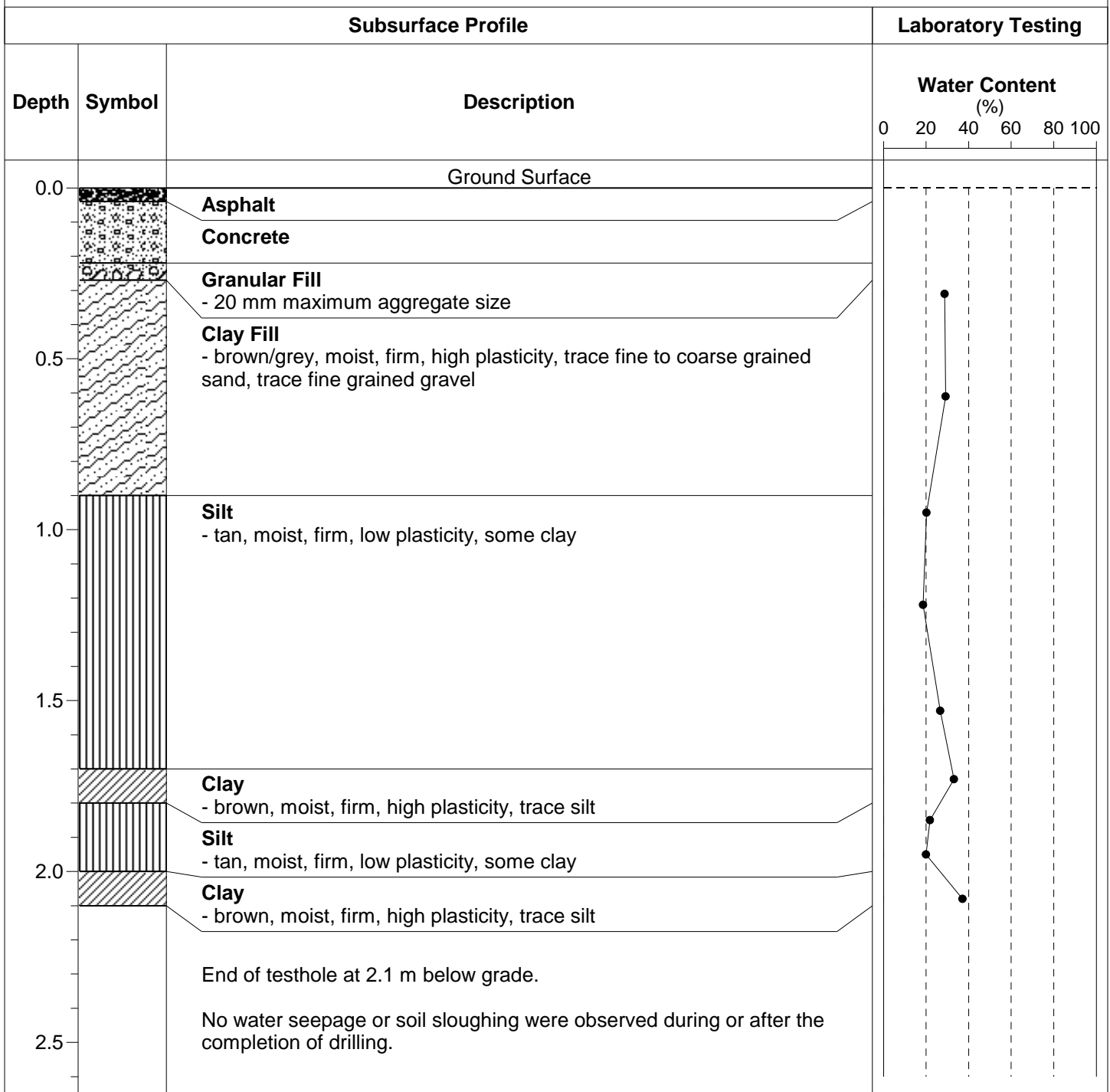
Client: Stantec Consulting Ltd.

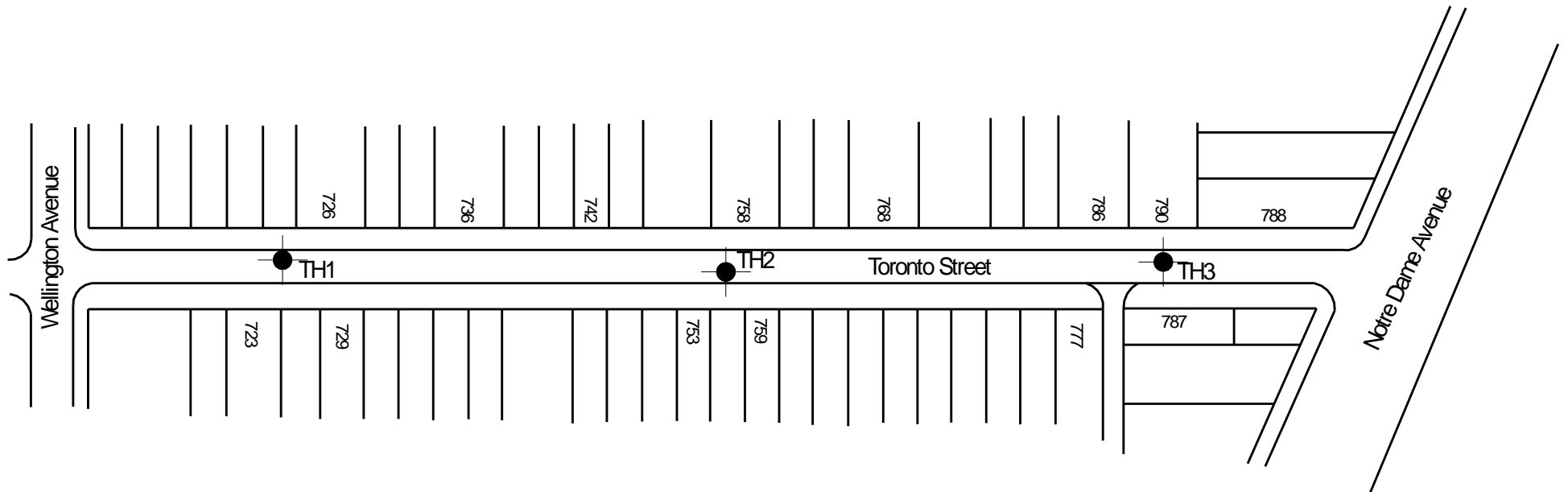
Depth of Testhole: 2.1 m

Site: Toronto Street, Notre Dame Avenue to Wellington Avenue

Logged by: Kurtis Kulchyski

Testhole Location: 4.4 m S of the N property line of 790 Toronto St., 1.2 m E of the W curb





**THE
NATIONAL
TESTING
LABORATORIES
LIMITED**
Established in 1923

Project No.: STA-701

Drawn By: SD

Date: Jan. 29, 2007

Scale: NTS

Testhole Location Plan
2007 Regional and Residential Streets Program
Toronto Street
Notre Dame Avenue to Wellington Avenue

2007 City of Winnipeg
Regional and Residential Streets Program
Toronto Street
Notre Dame Avenue to Wellington Avenue

