

- STAGE ONE  
SEQUENCE OF CONSTRUCTION
- 1 - CONSTRUCT TWO NORTHBOUND LANES OF ST. ANNE'S RD.
  - 2 - CONSTRUCT APPROACHES EASTSIDE OF ST. ANNE'S RD. (STAGING AS REQUIRED)
  - 3 - MAINTAIN ACCESS TO ALL PROPERTIES ON THE EASTSIDE OF ST. ANNES.
  - 4 - CONSTRUCT ASPHALT TAPER SOUTHWEND OF PROJECT.
  - 5 - RECONFIGURE TRAFFIC CROSSOVER NORTHWEND OF PROJECT.
  - 6 - RELOCATE TWO WAY TRAFFIC TO EASTSIDE OF ST. ANNE'S RD. FOR STAGE 2.
- STAGE 1 CONSTRUCTION (PERMANENT CONSTRUCTION)
  - ASPHALT TRANSITION FOR STAGE 2

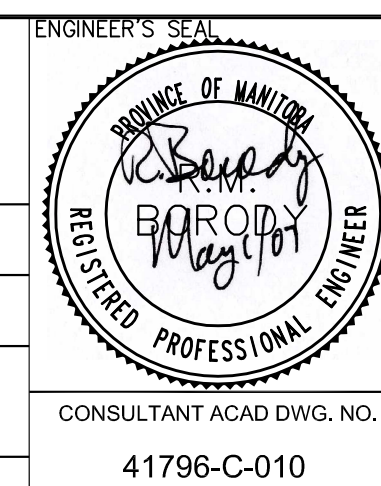
NOTES:

- 1) ALL WORK AND MATERIALS TO BE IN ACCORDANCE WITH THE LATEST REVISION OF THE CITY OF WINNIPEG STANDARD CONSTRUCTION SPECIFICATION, UNLESS OTHERWISE NOTED.
- 2) ALL ROADWAY DIMENSIONS SHOWN ARE TO BACK OF CURB.
- 3) CONTRACTOR TO ENSURE ACCESS TO ALL HOMES AND BUSINESSES IS MAINTAINED THROUGHOUT CONSTRUCTION.

LOCATIONS APPROVED		G.B.M. ELEV.	
UNDERGROUND STRUCTURES			
SUPV	U/G STRUCTURES	DATE	

LOCATION OF UNDERGROUND STRUCTURES AS SHOWN ARE BASED ON THE BEST INFORMATION AVAILABLE BUT NO GUARANTEE IS GIVEN THAT ALL EXISTING UTILITIES ARE SHOWN OR THAT THE GIVEN LOCATIONS ARE EXACT COORDINATION OF EXISTENCE AND EXACT LOCATION OF ALL SERVICES MUST BE OBTAINED FROM THE INDIVIDUAL UTILITIES BEFORE PROCEEDING

<b>NDLEA</b> Suite 111-93 Lombard Avenue, Winnipeg, Manitoba R3B 3B1 Ph. 204-943-3178 Fax. 204-943-4948			
DESIGNED BY	MS	CHECKED BY	RMB
DRAWN BY	MS/RA	APPROVED BY	RMB
HOR. SCALE 1:750		RELEASED FOR CONSTRUCTION	
NO. REVISIONS	DATE	BY	DATE
	MARCH 09.07		



**CITY OF WINNIPEG**  
PUBLIC WORKS DEPARTMENT  
TRANSPORTATION ENGINEERING DIVISION

**ST. ANNE'S ROAD**  
ALDGATE ROAD TO SOUTHGLEN BOULEVARD

**CONSTRUCTION STAGING PLAN**  
STAGE - 1

**P-3280-10**

SHEET 10 OF 12

**APEGM**  
Certificate of Authorization  
ND LEA Inc.  
No. 4317 Date: May 1, 2007

METRIC  
WHOLE NUMBERS INDICATE MILLIMETRES  
DECIMALIZED NUMBERS INDICATE METRES