

- NOTES:
- 1) ALL WORK AND MATERIALS TO BE IN ACCORDANCE WITH THE LATEST REVISION OF THE CITY OF WINNIPEG STANDARD CONSTRUCTION SPECIFICATION, UNLESS OTHERWISE NOTED.
  - 2) ALL ROADWAY DIMENSIONS SHOWN ARE TO BACK OF CURB.
  - 3) ALL EXISTING CULVERTS WITHIN EXCAVATION AREA TO BE REMOVED UNLESS OTHERWISE NOTED.
  - 4) ALL PRIVATE APPROACHES TO BE 200mm REINFORCED CONCRETE PAVEMENT, UNLESS OTHERWISE NOTED.
  - 5) ALL MEDIANS/BOULEVARDS TO BE SODDED UNLESS OTHERWISE NOTED.
  - 6) ALL CURBS SHALL BE MODIFIED BARRIER CURB, UNLESS OTHERWISE NOTED.

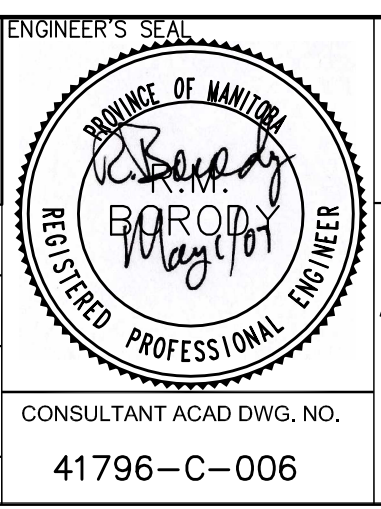
C25		C26		C27		C37		C38		C39		C40			
Δ	R	Δ	R	Δ	R	Δ	R	Δ	R	Δ	R	Δ	R		
38°25'11"	15.00	5°28'47"	90.09	4°55'43"	90.00	4°35'06"	1212.51	4°33'10"	1207.51	1°40'00"	1220.51	1°58'03"	1220.51		
T	5.23	L	4.31	T	3.87	T	48.00	T	17.75	T	20.98	T	20.98		
L	10.08	L	8.62	L	7.74	L	35.50	L	35.50	L	41.91	L	41.91		
CC	N 5520221.33 E 638075.44	CC	N 5520268.88 E 638060.21	TC	N 5520300.97 E 638016.72	CC	N 5520133.55 E 638116.86	CC	N 5520144.19 E 638116.86	CC	N 5520159.62 E 638094.66	CC	N 5520214.53 E 638069.63	CC	N 5520253.37 E 638053.87
CC	N 5520231.18 E 638074.81	CT	N 5520276.80 E 638056.83	CT	N 5520308.07 E 638042.05	CC	N 5520221.33 E 638075.44	CC	N 5520231.30 E 638076.69	CC	N 5520191.78 E 638075.61	CC	N 5520253.37 E 638053.87	CC	N 5520253.37 E 638053.87

EXISTING	LEGEND-PLAN	PROPOSED	EXISTING	LEGEND-PLAN	PROPOSED	EXISTING	LEGEND-PROFILE	PROPOSED
---	WATERMAIN	---	---	HYDRO POLE	---	---	CENTRE LINE	---
---	HYDRANT	---	---	HYDRO POLE WITH LIGHT	---	---	WEST GUTTER	---
---	VALVE	---	---	PROPERTY LINE	---	---	EAST GUTTER	---
---	LAND DRAINAGE SEWER	---	---	MODIFIED BARRIER CURB	---	---	WEST PROP. LINE	---
---	WASTE WATER SEWER	---	---	PINNED BARRIER CURB	---	---	EAST PROP. LINE	---
---	MANHOLE	---	---	EDGE OF ASPHALT ROADWAY	---	---	WEST DITCH	---
---	CATCH BASIN	---	---	SIDEWALK RAMP	---	---	EAST DITCH	---
---	SUB-DRAIN	---	---	ELEVATION	---	---		---
---	UTILITIES ADJUSTED	---	---	CONC. SIDEWALK/MEDIAN	---	---		---
---	GAS	---	---	ASPHALT PAVEMENT	---	---		---
---	M.T.S.	---	---	MONOLITHIC MEDIAN	---	---		---

LOCATIONS APPROVED		G.B.M. ELEV.	
SIGNED BY:	DATE	NO	REVISIONS
---	---	3	AS PER CITY REVIEW
---	---	2	ISSUE UNDERGROUND STRUCTURES
---	---	1	PRELIM DESIGN REVIEW
---	---	NO	REVISIONS

NDLEA			
Suite 111-93 Lombard Avenue, Winnipeg, Manitoba R3B 3B1 Ph. 204-943-3178 Fax. 204-943-4948			
DESIGNED BY	CHECKED BY	DATE	BY
KG/TJP	KG/Dd	APR. 25	RMB
ELDIKT	RMB	MAR. 29	RMB
		MAR. 21	RMB

ENGINEER'S SEAL	
CONSULTANT ACAD DWG. NO.	DATE
41796-C-006	FEBRUARY 26.07



**CITY OF WINNIPEG**  
PUBLIC WORKS DEPARTMENT  
TRANSPORTATION ENGINEERING DIVISION

**ST. ANNE'S ROAD**  
ALDGLATE ROAD TO 280m SOUTH OF SOUTHGLEN BOULEVARD

**PAVEMENT RECONSTRUCTION**  
STA. 9+60.00 - STA. 10+98.00

**P-3280-06**  
SHEET 6 OF 12

