

	C17	C18	C19	C21	C22	C23	C24
Δ	8'24'53"	23'34'08"	23'27'14"	23'04'26"	39'58'30"	23'29'56"	23'35'15"
R	140.00	50.00	25.00	50.00	25.00	50.00	25.00
T	10.30	10.43	5.19	10.21	9.09	10.40	5.22
L	20.56	20.57	10.23	20.14	10.51	10.29	10.29
TC	N 5520055.68 E 638164.27	N 5520077.66 E 638138.41	N 5520092.82 E 638124.73	N 5520110.49 E 638079.36	N 5520123.59 E 638094.48	N 5520139.88 E 638099.64	N 5520134.33 E 638119.55
CT	N 5520072.50 E 638152.48	N 5520092.82 E 638124.73	N 5520096.53 E 638117.35	N 5520123.59 E 638094.48	N 5520139.88 E 638099.64	N 5520159.62 E 638094.66	N 5520144.19 E 638116.86
	C30	C31	C35	C36			
Δ	9'58'35"	2'18'37"	3'41'39"	1'55'55"			
R	1189.47	1220.57	1212.51	1211.00			
T	104.69	24.61	39.10	20.42			
L	208.85	49.22	78.18	40.84			
SC	N 5520046.99 E 638181.76	N 5520035.67 E 638164.07	N 5520039.98 E 638170.81	N 5520072.46 E 638152.51			
CC	N 5520231.84 E 638085.13	N 5520077.66 E 638138.41	N 5520107.18 E 638150.86	N 5520081.78 E 638149.74			

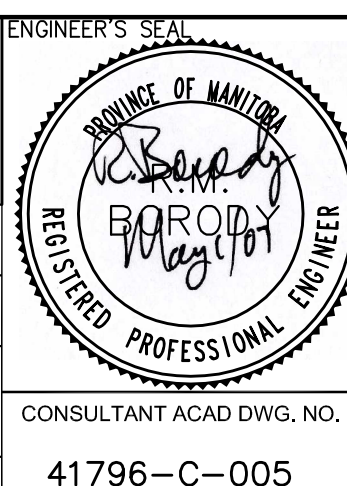
- NOTES:
- 1) ALL WORK AND MATERIALS TO BE IN ACCORDANCE WITH THE LATEST REVISION OF THE CITY OF WINNIPEG STANDARD CONSTRUCTION SPECIFICATION, UNLESS OTHERWISE NOTED.
 - 2) ALL ROADWAY DIMENSIONS SHOWN ARE TO BACK OF CURB.
 - 3) ALL EXISTING CULVERTS WITHIN EXCAVATION AREA TO BE REMOVED UNLESS OTHERWISE NOTED.
 - 4) ALL PRIVATE APPROACHES TO BE 200mm REINFORCED CONCRETE PAVEMENT, UNLESS OTHERWISE NOTED.
 - 5) ALL MEDIANS/BOULEVARDS TO BE SODDED UNLESS OTHERWISE NOTED.
 - 6) ALL CURBS SHALL BE MODIFIED BARRIER CURB, UNLESS OTHERWISE NOTED.
 - 7) TRAFFIC SIGNALS TO BE INSTALLED AT ST. ANNE'S ROAD AND WARDE AVENUE (BY OTHERS)



EXISTING	LEGEND-PLAN	PROPOSED	EXISTING	LEGEND-PLAN	PROPOSED	EXISTING	LEGEND-PROFILE	PROPOSED
---	WATERMAIN	---	---	HYDRO POLE	---	---	CENTRE LINE	---
⊕	HYDRANT	⊕	---	HYDRO POLE WITH LIGHT	---	---	WEST GUTTER	---
⊕	VALVE	⊕	---	PROPERTY LINE	---	---	EAST GUTTER	---
---	LAND DRAINAGE SEWER	---	---	MODIFIED BARRIER CURB	---	---	WEST PROP. LINE	---
---	WASTE WATER SEWER	---	---	PINNED BARRIER CURB	---	---	EAST PROP. LINE	---
⊙	MANHOLE	⊙	---	EDGE OF ASPHALT ROADWAY	---	---	WEST DITCH	---
⊙	CATCH BASIN	⊙	---	SIDEWALK RAMP	---	---	EAST DITCH	---
---	SUB-DRAIN	---	---	ELEVATION	(32.50)	---		---
---	UTILITIES ADJUSTED	⊙ ⊙ ⊙ Δ	---	CONC. SIDEWALK/MEDIAN	---	---		---
---	GAS	---	---	ASPHALT PAVEMENT	---	---		---
---	M.T.S.	---	---	MONOLITHIC MEDIAN	---	---		---

NO	REVISIONS	DATE	BY
3	AS PER CITY REVIEW	APR. 25	RMB
2	ISSUE UNDERGROUND STRUCTURES	MAR. 29	RMB
1	PRELIM DESIGN REVIEW	MAR. 21	RMB

G.B.M. ELEV.	DATE	BY
	FEBRUARY 26.07	



NDLEA
Suite 111-93 Lombard Avenue, Winnipeg, Manitoba R3B 3B1
Ph. 204-943-3178 Fax. 204-943-4948

DESIGNED BY: KG/TJP
CHECKED BY: KG/Dd

DRAWN BY: EL/DKT
APPROVED BY: RMB

DATE: FEBRUARY 26.07

HOR. SCALE: 1:250
VERTICAL: 1:10

RELEASED FOR CONSTRUCTION

CONSULTANT ACAD DWG. NO. 41796-C-005

CITY OF WINNIPEG
PUBLIC WORKS DEPARTMENT
TRANSPORTATION ENGINEERING DIVISION

ST. ANNE'S ROAD
ALDGLATE ROAD TO 280m SOUTH OF SOUTHLEEN BOULEVARD

PAVEMENT RECONSTRUCTION
STA. 7+90.00 - STA. 9+60.00

P-3280-05

SHEET 5 OF 12