

- NOTES:
- 1) ALL WORK AND MATERIALS TO BE IN ACCORDANCE WITH THE LATEST REVISION OF THE CITY OF WINNIPEG STANDARD CONSTRUCTION SPECIFICATION, UNLESS OTHERWISE NOTED.
 - 2) ALL ROADWAY DIMENSIONS SHOWN ARE TO BACK OF CURB.
 - 3) ALL EXISTING CULVERTS WITHIN EXCAVATION AREA TO BE REMOVED UNLESS OTHERWISE NOTED.
 - 4) ALL PRIVATE APPROACHES TO BE 200mm REINFORCED CONCRETE PAVEMENT, UNLESS OTHERWISE NOTED.
 - 5) ALL MEDIANS/BOLLEVARDS TO BE SODDED UNLESS OTHERWISE NOTED.
 - 6) ALL CURBS SHALL BE MODIFIED BARRIER CURB, UNLESS OTHERWISE NOTED.

APEGM
 Certificate of Authorization
 ND LEA Inc.
 No. 4317 Date: May 1, 2007

METRIC
 WHOLE NUMBERS INDICATE MILLIMETRES
 DECIMALIZED NUMBERS INDICATE METRES

| EXISTING | LEGEND-PLAN | PROPOSED | EXISTING | LEGEND-PLAN | PROPOSED | EXISTING | LEGEND-PROFILE | PROPOSED |
|----------|---------------------|----------|----------|-------------------------|----------|----------|-----------------|----------|
| --- | WATERMAIN | --- | --- | HYDRO POLE | --- | --- | CENTRE LINE | --- |
| --- | HYDRANT | --- | --- | HYDRO POLE WITH LIGHT | --- | --- | WEST GUTTER | --- |
| --- | VALVE | --- | --- | PROPERTY LINE | --- | --- | EAST GUTTER | --- |
| --- | LAND DRAINAGE SEWER | --- | --- | MODIFIED BARRIER CURB | --- | --- | WEST PROP. LINE | --- |
| --- | WASTE WATER SEWER | --- | --- | PINNED BARRIER CURB | --- | --- | EAST PROP. LINE | --- |
| --- | MANHOLE | --- | --- | EDGE OF ASPHALT ROADWAY | --- | --- | WEST DITCH | --- |
| --- | CATCH BASIN | --- | --- | SIDEWALK RAMP | --- | --- | EAST DITCH | --- |
| --- | SUB-DRAIN | --- | --- | ELEVATION | --- | --- | | --- |
| --- | UTILITIES ADJUSTED | --- | --- | CONC. SIDEWALK/MEDIAN | --- | --- | | --- |
| --- | GAS | --- | --- | ASPHALT PAVEMENT | --- | --- | | --- |
| --- | M.T.S. | --- | --- | MONOLITHIC MEDIAN | --- | --- | | --- |

LOCATIONS APPROVED
 UNDERGROUND STRUCTURES
 SIGNED BY: _____ DATE: _____
 SUPV. U/G STRUCTURES: _____ DATE: _____

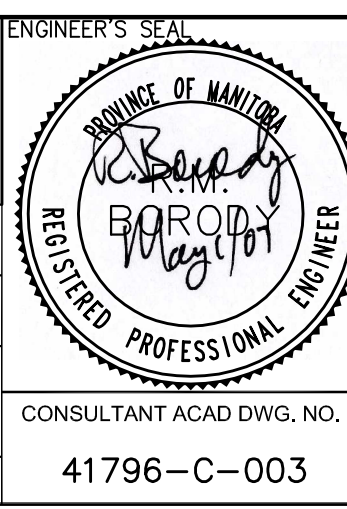
LOCATION OF UNDERGROUND STRUCTURES AS SHOWN ARE BASED ON THE BEST INFORMATION AVAILABLE BUT NO GUARANTEE IS GIVEN THAT THE GIVEN LOCATIONS ARE EXACT CONFIRMATION OF EXISTENCE AND EXACT LOCATION OF ALL SERVICES MUST BE OBTAINED FROM THE INDIVIDUAL UTILITIES BEFORE PROCEEDING

G.B.M. ELEV.

| | | | |
|----|------------------------------|---------|-----|
| NO | REVISIONS | DATE | BY |
| 3 | AS PER CITY REVIEW | APR. 25 | RMB |
| 2 | ISSUE UNDERGROUND STRUCTURES | MAR. 29 | RMB |
| 1 | PRELIM DESIGN REVIEW | MAR. 21 | RMB |

DESIGNED BY: KG/TJP
 CHECKED BY: KG/Dd
 DRAWN BY: EL/DKT
 APPROVED BY: RMB

HOR. SCALE 1:250
 VERTICAL 1:10
 DATE FEBRUARY 26.07
 RELEASED FOR CONSTRUCTION



CITY OF WINNIPEG
 PUBLIC WORKS DEPARTMENT
 TRANSPORTATION ENGINEERING DIVISION

ST. ANNE'S ROAD
 ALDGLATE ROAD TO 280m SOUTH OF SOUTHGLEN BOULEVARD

PAVEMENT RECONSTRUCTION
 STA. 4+40.00 - STA. 6+15.00

P-3280-03
 SHEET 3 OF 12