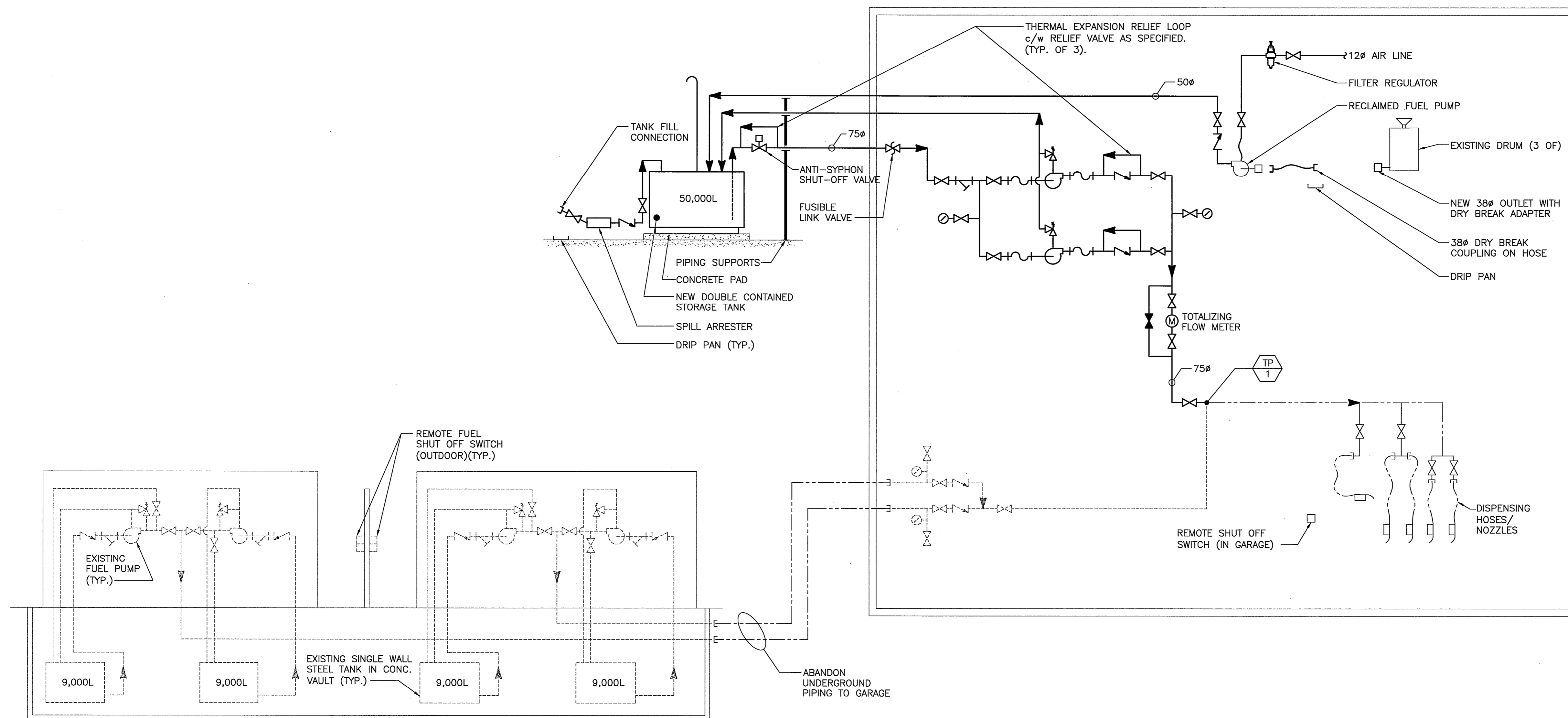
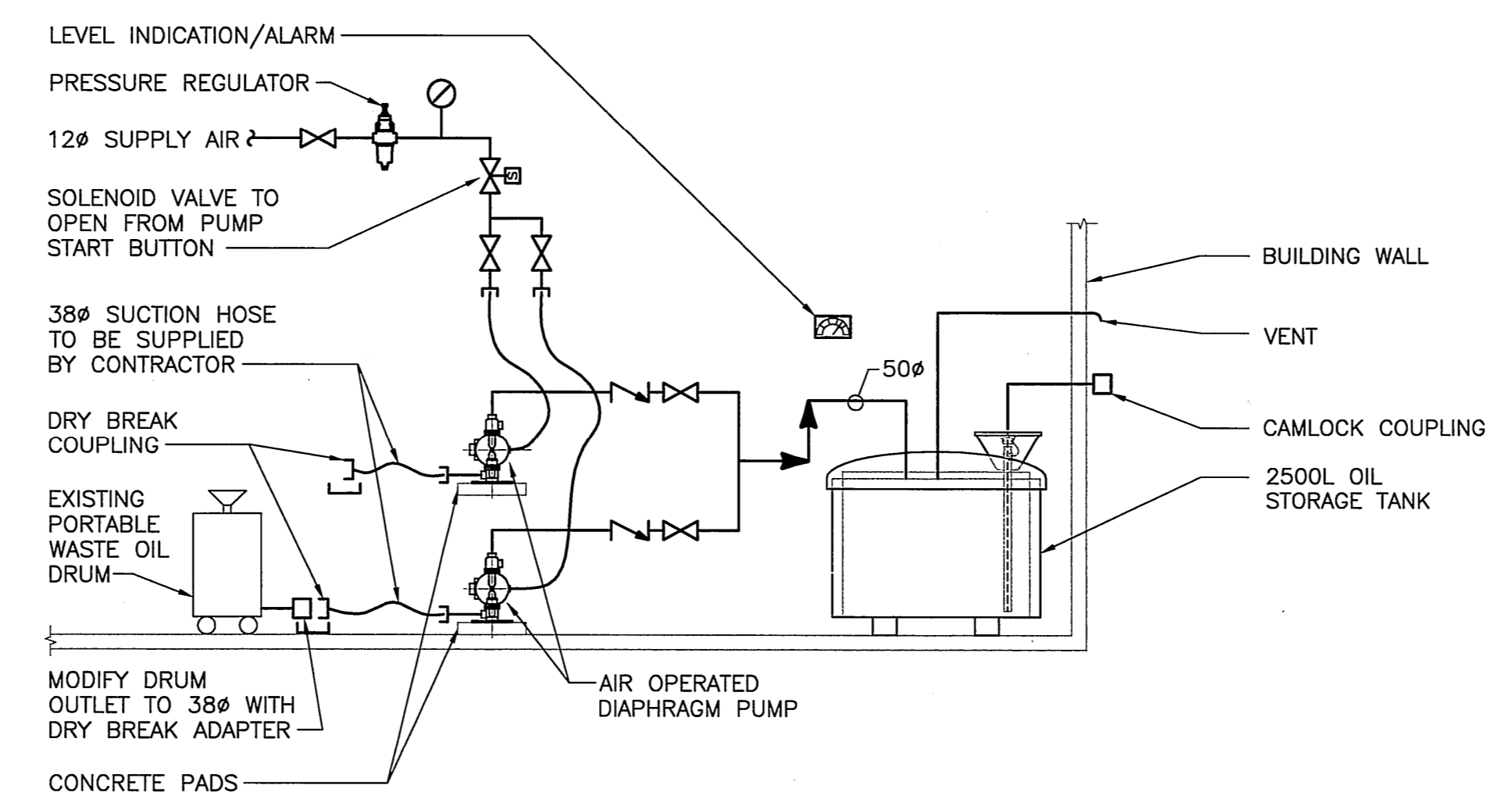


**LEGEND:**


- NEW
- - - EXISTING TO REMAIN
- EXISTING TO BE REMOVED
- ⌘ CHECK VALVE
- ⌘ EMERGENCY SHUTOFF VALVE
- ⌘ FUSIBLE LINK VALVE
- ⌘ PRESSURE RELIEF VALVE
- ⌘ STRAINER
- ⌘ VALVE (NORMALLY CLOSED)
- ⌘ VALVE (NORMALLY OPEN)
- ⌘ SOLENOID VALVE
- ⌘ PRESSURE GAUGE
- ⌘ METER
- ⌘ PUMP
- ▶ FLOW DIRECTION
- ⌘ HOSE CONNECTION
- ⌘ CAP
- ⌘ REDUCER
- ⌘ FLEXIBLE CONNECTION
- ⌘ TIE-IN POINT



**1 DIESEL FUEL SYSTEM**  
N.T.S.



**2 WASTE OIL SYSTEM**  
N.T.S.

0	ISSUED FOR TENDER	07.04.05	LWS
NO.	DESCRIPTION	DATE	ISSUED BY
<b>REVISIONS/ISSUE</b>			
<small>THE CONTENT OF THIS DOCUMENT IS NOT INTENDED FOR THE USE OF, NOR IS IT INTENDED TO BE RELIED UPON BY ANY PERSON, FIRM OR CORPORATION, OTHER THAN THE CLIENT AND WARDROP ENGINEERING INC. WARDROP ENGINEERING DENIES ANY LIABILITY WHATSOEVER TO OTHER PARTIES FOR DAMAGES OR INJURY SUFFERED BY SUCH THIRD PARTY ARISING FROM USE OF THIS DOCUMENT BY THEM, WITHOUT THE EXPRESS PRIOR WRITTEN AUTHORITY OF WARDROP ENGINEERING AND OUR CLIENT. THIS DOCUMENT IS SUBJECT TO FURTHER RESTRICTIONS IMPOSED BY THE CONTRACT BETWEEN THE CLIENT AND WARDROP ENGINEERING INC. AND THESE PARTIES' PERMISSION MUST BE SOUGHT REGARDING THIS DOCUMENT IN ALL OTHER CIRCUMSTANCES.</small>			
CLIENT <b>CITY OF WINNIPEG TRANSIT DEPARTMENT</b>			
<b>WARDROP</b>   Engineering Inc.			
PROJECT NAME PETROLEUM STORAGE AND HANDLING SYSTEMS REPLACEMENT			
DRAWING DESCRIPTION <b>MAIN STREET FACILITY MECHANICAL - FLOW SCHEMATICS</b>			
DESIGNED BY:	L.S.	DRAWN BY:	D.D.
CHECKED BY:			
APPROVED BY:			
SCALE:	AS NOTED	DATE:	07.01.15
DRAWING NO.	0729720100-DWG-M0001	REV.	0

