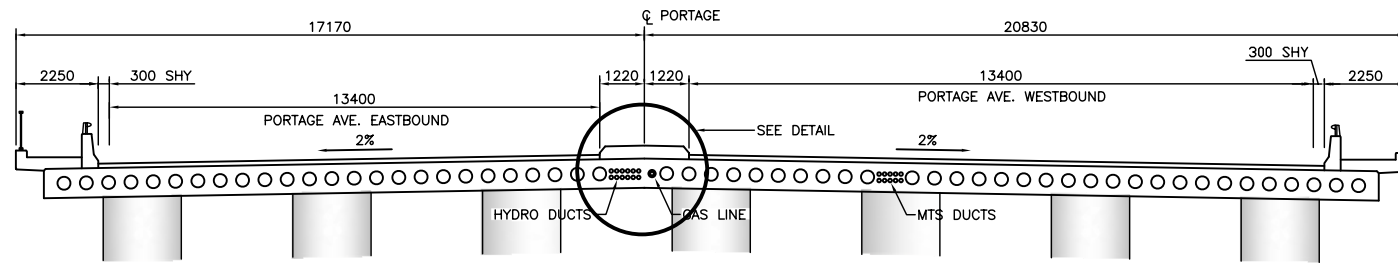
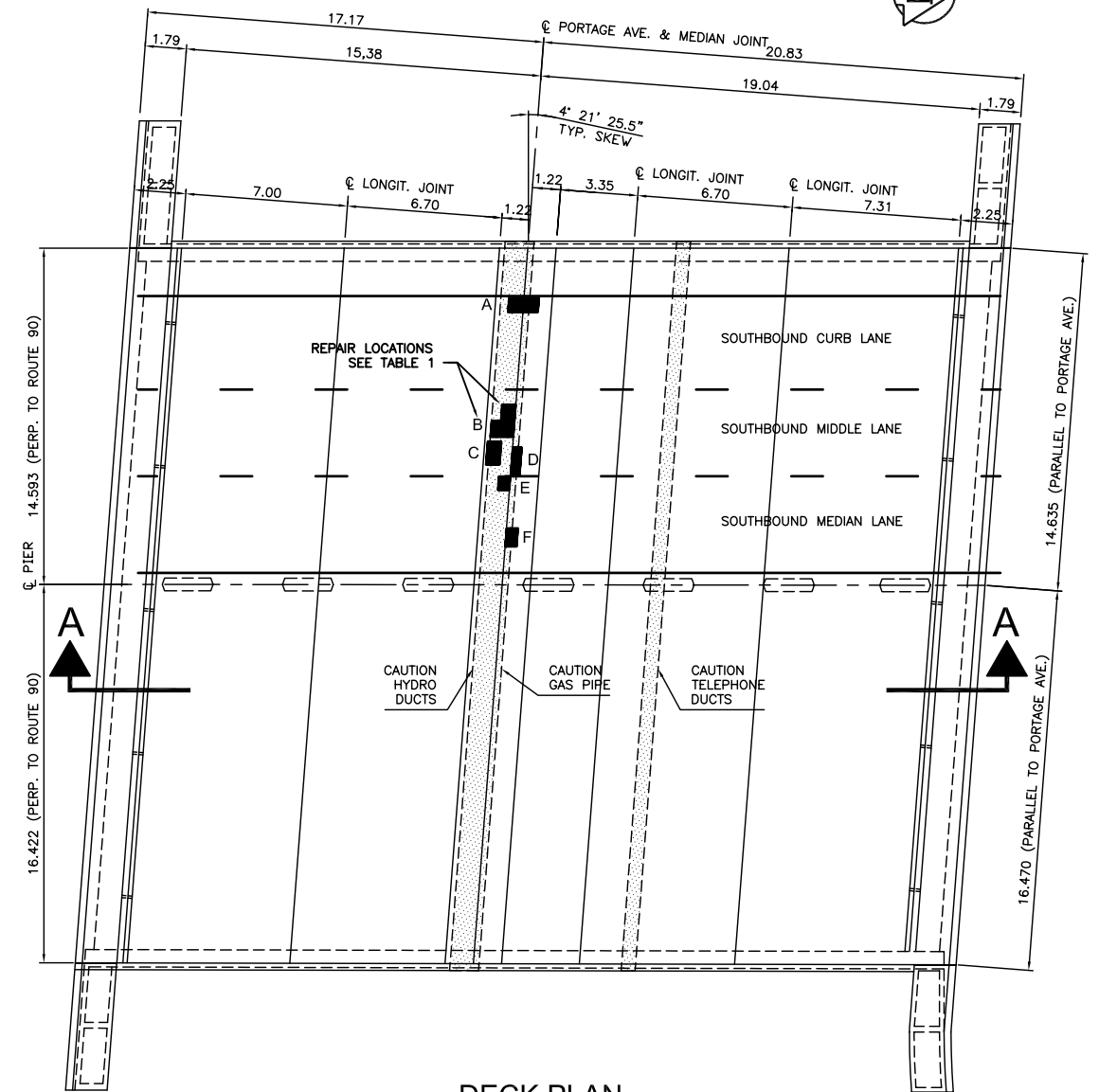


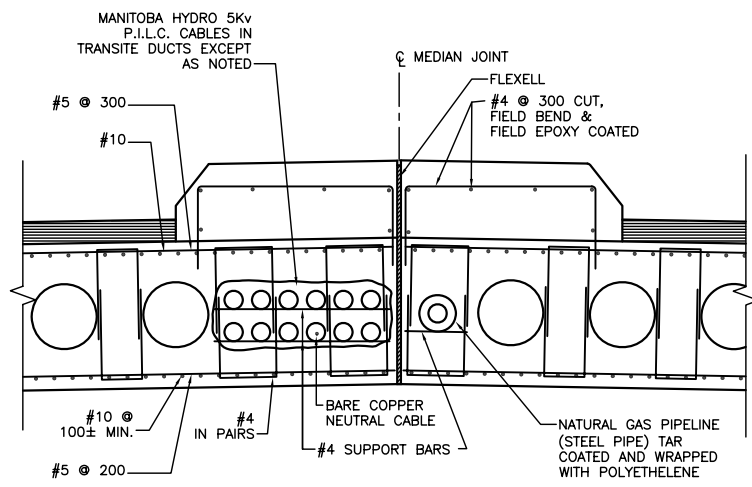
BRIDGE LONGITUDINAL SECTION
N.T.S. (LOOKING NORTH)



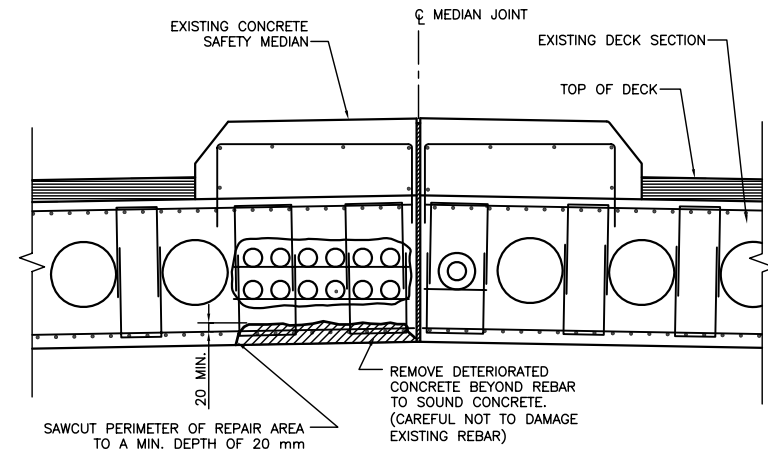
BRIDGE DECK CROSS SECTION A-A
N.T.S.



DECK PLAN
N.T.S.



DETAIL - EXISTING
N.T.S.



DETAIL - TYPICAL REPAIR
N.T.S. PROPOSED

- NOTES:**
- 1: ACTUAL REPAIR LOCATIONS WILL BE MARKED BY THE CONTRACT ADMINISTRATOR.
 - 2: SEE SPECIFICATION FOR REPAIR METHOD.
 - 3: CLEAR COVER TO REINFORCING STEEL 50± mm.
 - 4: REPLACE ANY DAMAGED OR MISSING FLEXELL.
 - 5: LONGITUDINAL #10 REINFORCING SPACING VARIES WITH DISTANCE FROM SUBSTRUCTURE SUPPORTS. SEE DRAWING B5000-171 FOR DETAILS.
 - 6: SEE SPECIFICATION FOR TRAFFIC CONTROL REQUIREMENTS.

TABLE 1

REPAIR LOCATION	APPROXIMATE AREA
A	0.8m ²
B	1.2m ²
C	0.5m ²
D	0.6m ²
E	0.3m ²
F	0.8m ²

METRIC
WHOLE NUMBERS INDICATE MILLIMETRES
DECIMALIZED NUMBERS INDICATE METRES

NOTE:

B.M. ELEV.	DESIGNED BY: B.A.N.
	DRAWN BY: A.P.
	CHECKED BY: B.A.N.
	APPROVED BY: B.A.N.
	AUTHORIZED BY:
NO. REVISION	DATE BY
	B.A. NEIRINCK BRIDGE PLANNING & OPERATIONS ENGINEER

ENGINEER'S SEAL

BID OPPORTUNITY NO.: 245-2007

CITY OF WINNIPEG
PUBLIC WORKS DEPARTMENT
TRANSPORTATION ENGINEERING DIVISION

PORTAGE AVENUE OVERPASS
(OVER ROUTE 90 - S/B)
CONCRETE REPAIRS
TO DECK UNDERSIDE OF BRIDGE

ELEVATION, PLAN & DETAILS

SHEET 1 OF 1
HORIZONTAL: N.T.S.
VERTICAL: N.T.S.
CITY DRAWING NUMBER: B223-07-01