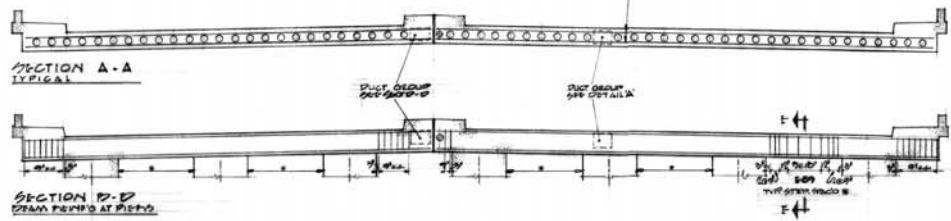
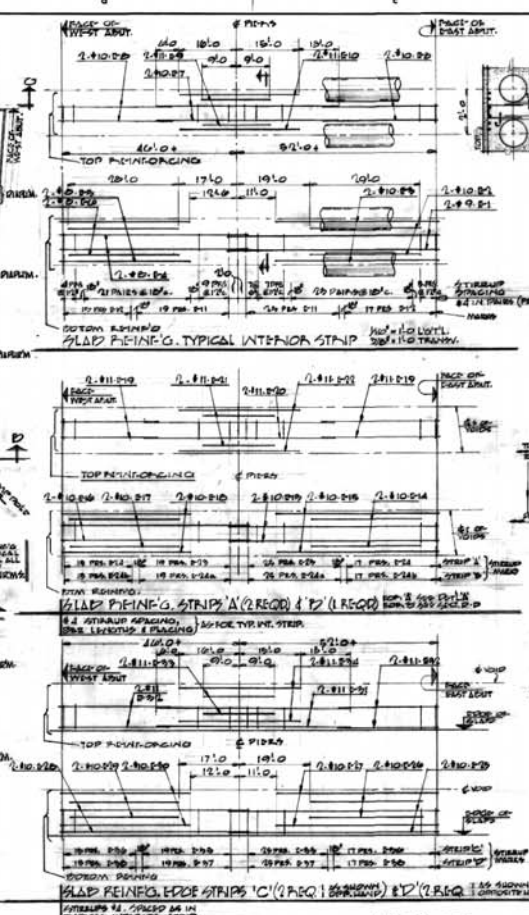


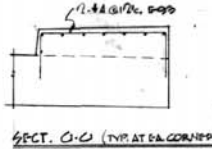
PLAN 1/2" = 1'-0"



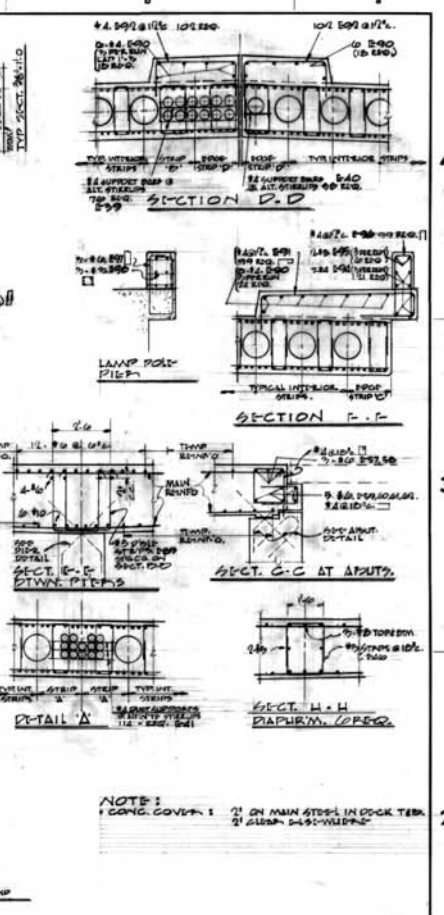
SECTION D-D DECK PROFILE AT PIERS



GLASS REINFORCING STRIP C (REQD) AS SHOWN IN TYPICAL INTERIOR STRIP



SECT. C-C (TYP. AT CORNER)



1 FOR PLAN, 1/2" = 1'-0" D.W.G. D-5000-107	
REVISION NO. 1 DATE 10/15/68 FOR CONSTRUCTION	APPROVED J.A.B. LOVELL REGISTERED ENGINEER WINNIPEG, MANITOBA
REVISION NO. 2 DATE 10/15/68 FOR TENDER	APPROVED A.D. MASON CONSULTING PROFESSIONAL ENGINEER TORONTO
ISSUE OR REVISION	
METROPOLITAN CORPORATION OF GREATER WINNIPEG STREETS AND TRANSIT DIVISION	
ST. JAMES BRIDGE AND INTERCHANGE PORTAGE AVENUE UNDERPASS REINFORCEMENT FOR DECK	
DRAWN BY J.M.	DATE 15 JULY 1968
CHECKED BY J.M.	SCALE AS SHOWN
FILE NO. 1000-10-107-1000	D.W.G. NO. B-5000-171
SHEET NO.	DRAWN BY

