

DOOR SCHEDULE													
DOOR No.	FRAME				DOOR				TRIM		WALL TYPE	REMARKS	
	NOM. SIZE	TYPE	MAT'L	FIN.	THICK	CORE	TYPE	MAT'L	FIN.	HOWE			MAT'L
1-01A	6'-0" x 7'-0"	2	PR.ST.	P.	1 3/4"	INSUL H.M.	-	H.M.	P.	-	-	-	ALUM. THRESHOLD WEATHERSTRIPPING
1-01B	3'-0" x 7'-0"	1	PR.ST.	P.	1 3/4"	INSUL H.M.	-	H.M.	P.	-	-	-	ALUM. THRESHOLD WEATHERSTRIPPING
1-01C	3'-0" x 7'-0"	1	PR.ST.	P.	1 3/4"	INSUL H.M.	-	H.M.	P.	-	-	-	ALUM. THRESHOLD WEATHERSTRIPPING
1-01D	3'-0" x 7'-0"	4	PR.ST.	P.	1 3/4"	H.M.	-	H.M.	P.	-	-	-	UL CLASS 'B'
1-01F	3'-0" x 7'-0"	3	PR.ST.	P.	1 3/4"	H.M.	-	H.M.	P.	-	-	-	ALUM. THRESHOLD WEATHERSTRIPPING
1-01G	6'-0" x 7'-0"	4	PR.ST.	P.	1 3/4"	H.M.	-	H.M.	P.	-	-	-	
1-01H	6'-0" x 7'-0"	2	PR.ST.	P.	1 3/4"	INSUL H.M.	-	H.M.	P.	-	-	-	ALUM. THRESHOLD WEATHERSTRIPPING

HARDWARE LIST

DOORS 1-01A : 1-01H
 3 PR. STSFB191 C32D BUTTS 4 1/2 x 4 (N.R.P.)
 1 ONLY C51PD 3/4 x PLY x G30 x 234 LOCKSET
 2 ONLY 455B 26D x 12" FLUSH EXT. BOLTS
 1 ONLY LCN 4019-R x 17 x 9R1 x C26D DOOR CLOSER & BRACKET
 2 ONLY CB-2311 x C19 DOORSTOPS & HOLDERS

DOORS 1-01B
 1 1/2 PR. STSFB191 C32D BUTTS 4 1/2 x 4 (N.R.P.)
 1 ONLY LCN 4019-R x 17 x 9R1 x C26D DOOR CLOSER & BRACKET
 1 ONLY CB-2311 x C19 DOORSTOP

DOORS 1-01C
 1 1/2 PR. STSFB191 C32D BUTTS 4 1/2 x 4 (N.R.P.)
 1 ONLY LCN 4019-R x 17 x 9R1 x C26D DOOR CLOSER & BRACKET
 1 ONLY CB-2311 x C19 DOORSTOP

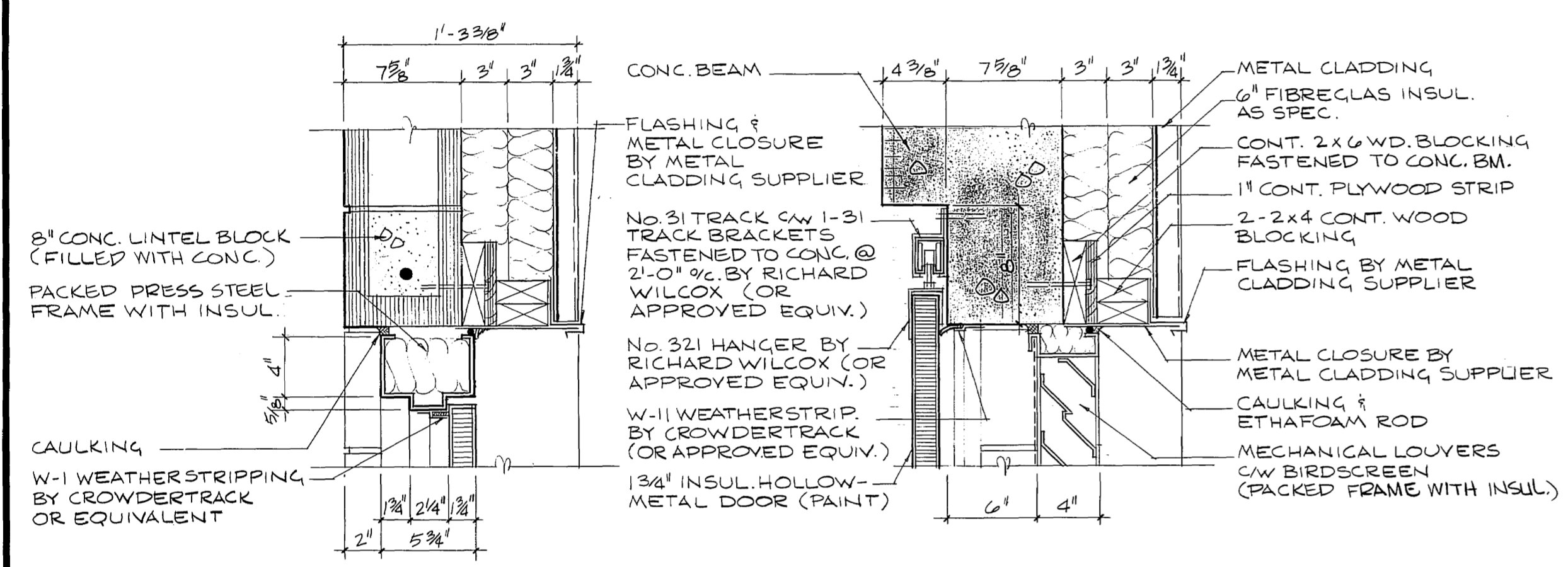
DOORS 1-01D
 1 1/2 PR. STSFB191 C32D BUTTS 4 1/2 x 4 (N.R.P.)
 1 ONLY LCN 4019-R x 17 x 9R1 x C26D DOOR CLOSER & BRACKET
 1 ONLY CB-2311 x C19 DOORSTOP

DOORS 1-01E
 1 1/2 PR. STSFB191 C32D BUTTS 4 1/2 x 4 (N.R.P.)
 1 ONLY LCN 4019-R x 17 x 9R1 x C26D DOOR CLOSER & BRACKET
 1 ONLY CB-2311 x C19 DOORSTOP

DOORS 1-01F
 3 PR. STSFB191 C32D BUTTS 4 1/2 x 4 (N.R.P.)
 1 ONLY C51PD x PLY x G30 x 234 LOCKSET
 2 ONLY 455B 26D x 12" FLUSH EXT. BOLTS

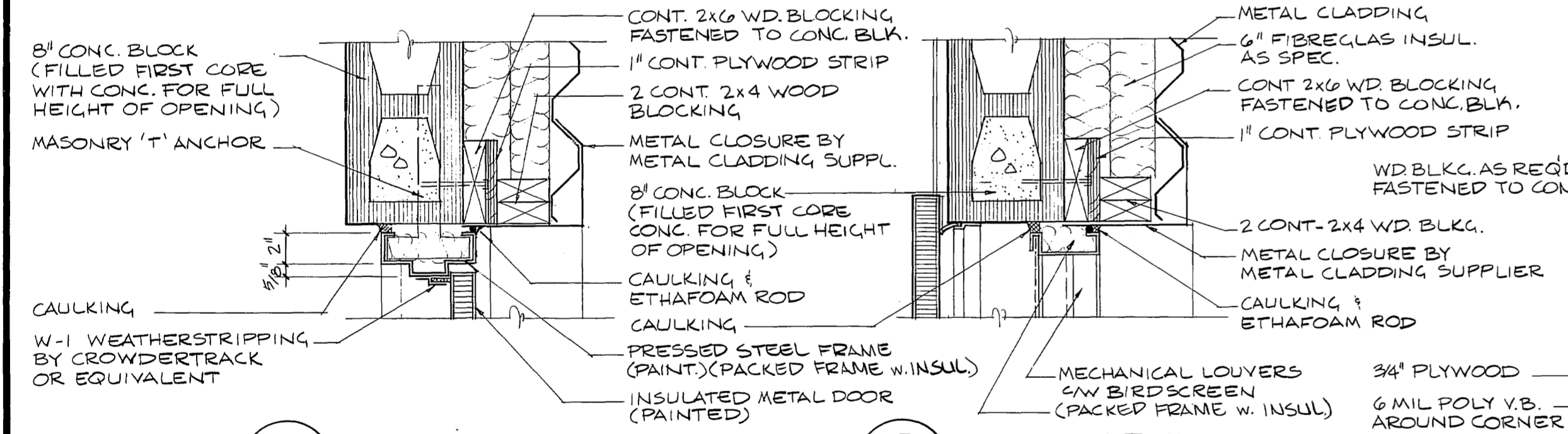
DOORS 1-01G
 3 PR. STSFB191 C32D BUTTS 4 1/2 x 4 (N.R.P.)
 1 ONLY C51PD x PLY x G30 x 234 LOCKSET
 2 ONLY 455B 26D x 12" FLUSH EXT. BOLTS

NOTE :
 FOR GENERAL NOTES REFER TO DWG 76012-05-S11



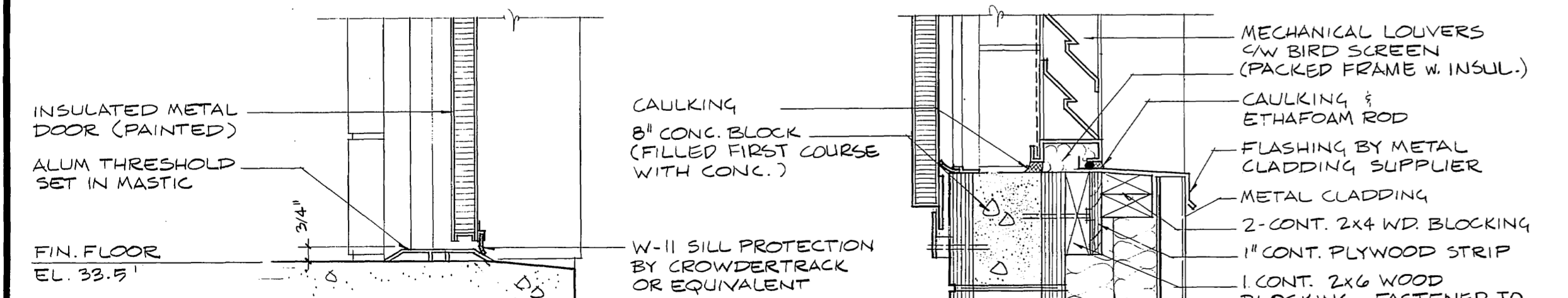
1 HEAD DETAIL
 A103/106 1 1/2" x 1'-0"

4 HEAD DETAIL
 A103/106 1 1/2" x 1'-0"



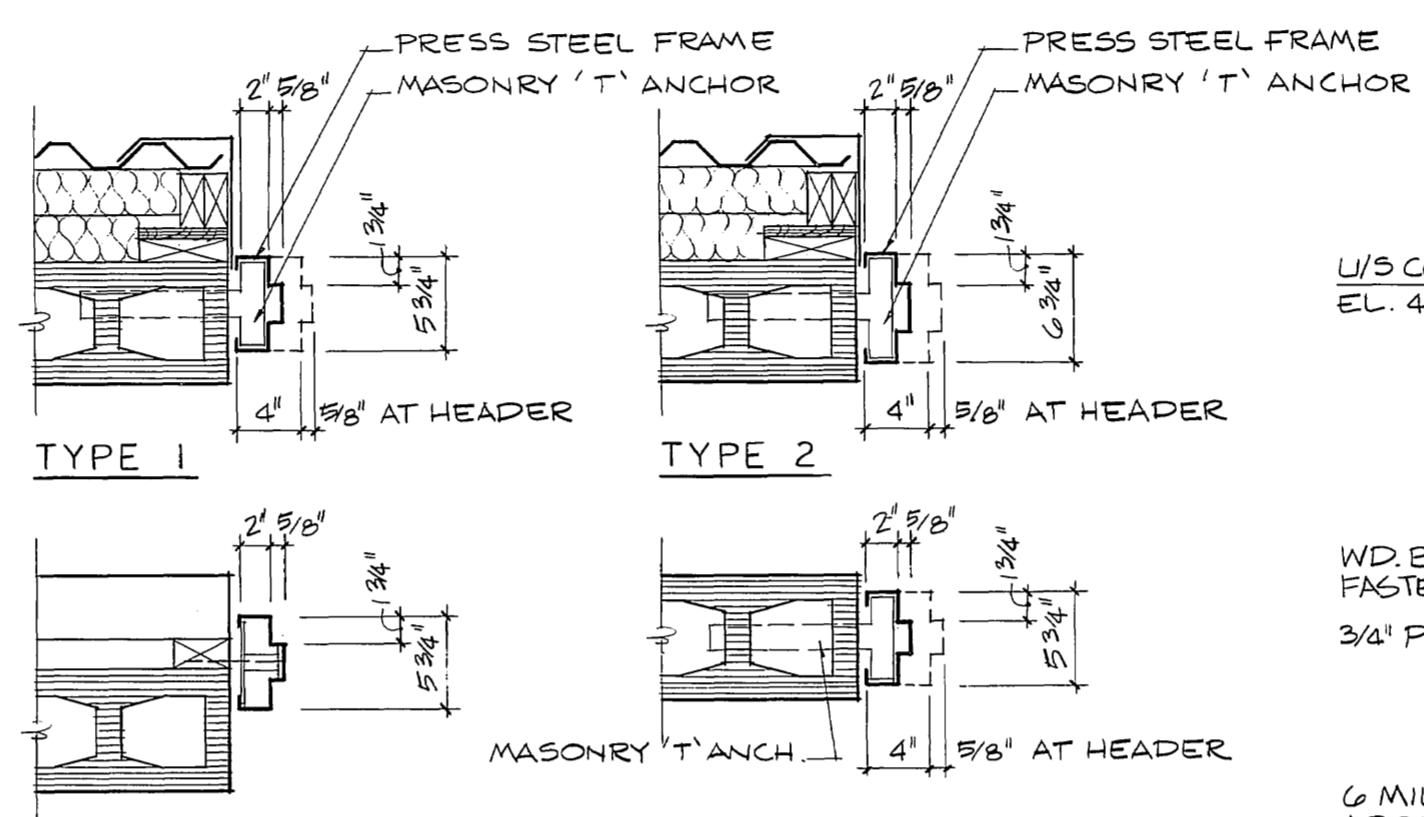
2 JAMB DETAIL
 A103/106 1 1/2" x 1'-0"

5 JAMB DETAIL
 A103/106 1 1/2" x 1'-0"

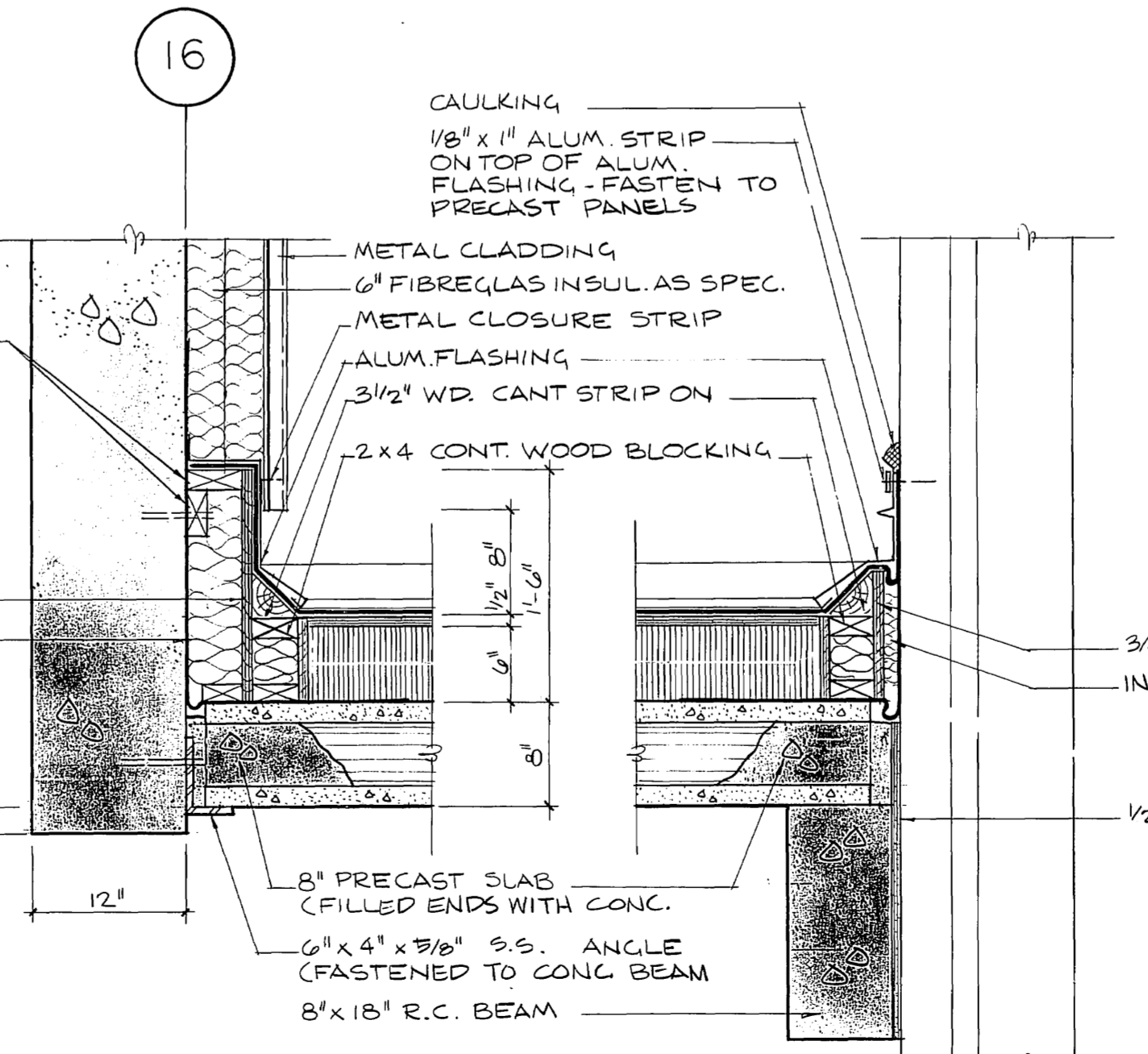


3 SILL DETAIL
 A103/106 1 1/2" x 1'-0"

6 SILL DETAIL
 A103/106 1 1/2" x 1'-0"

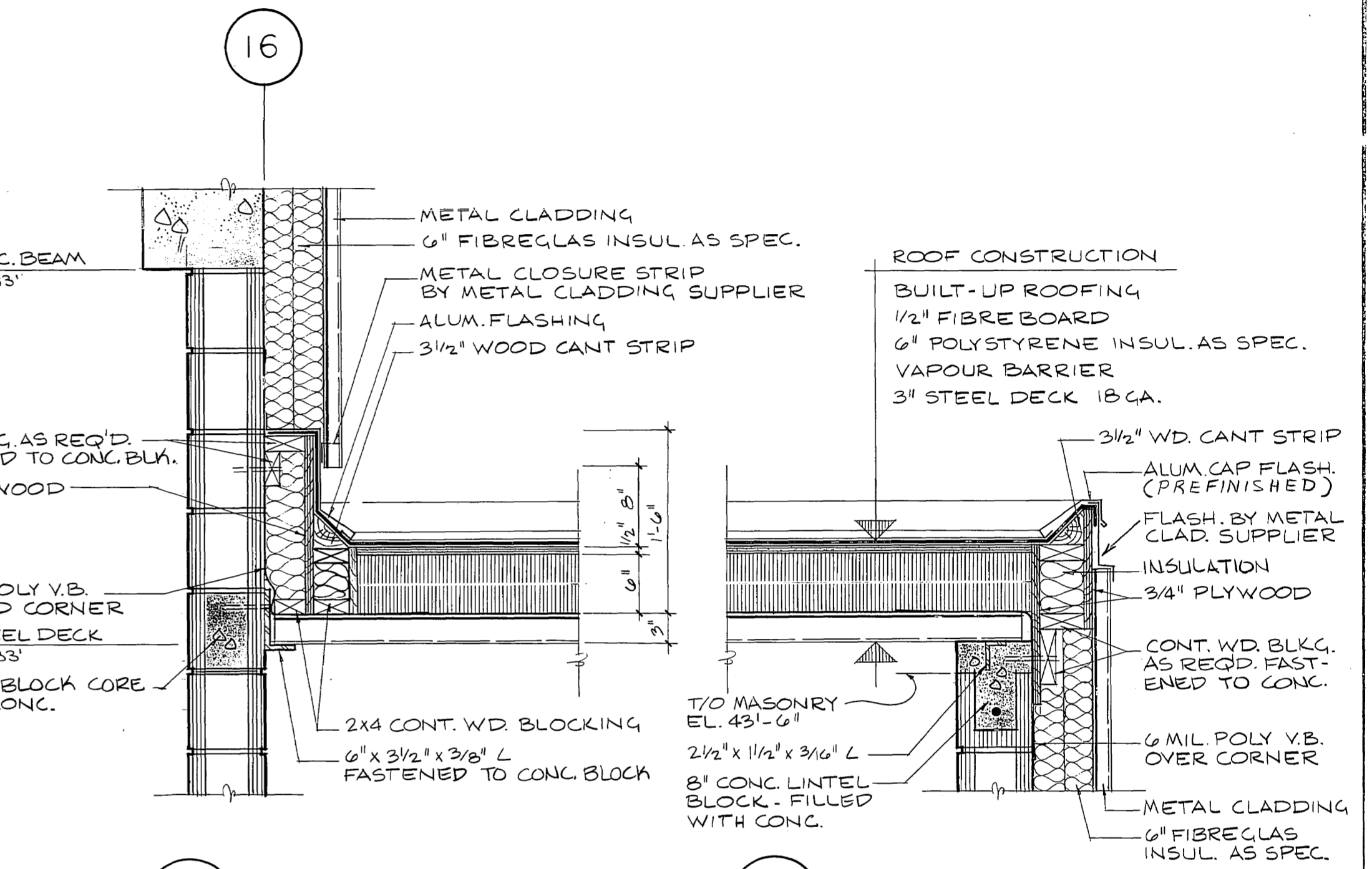


FRAME TYPES



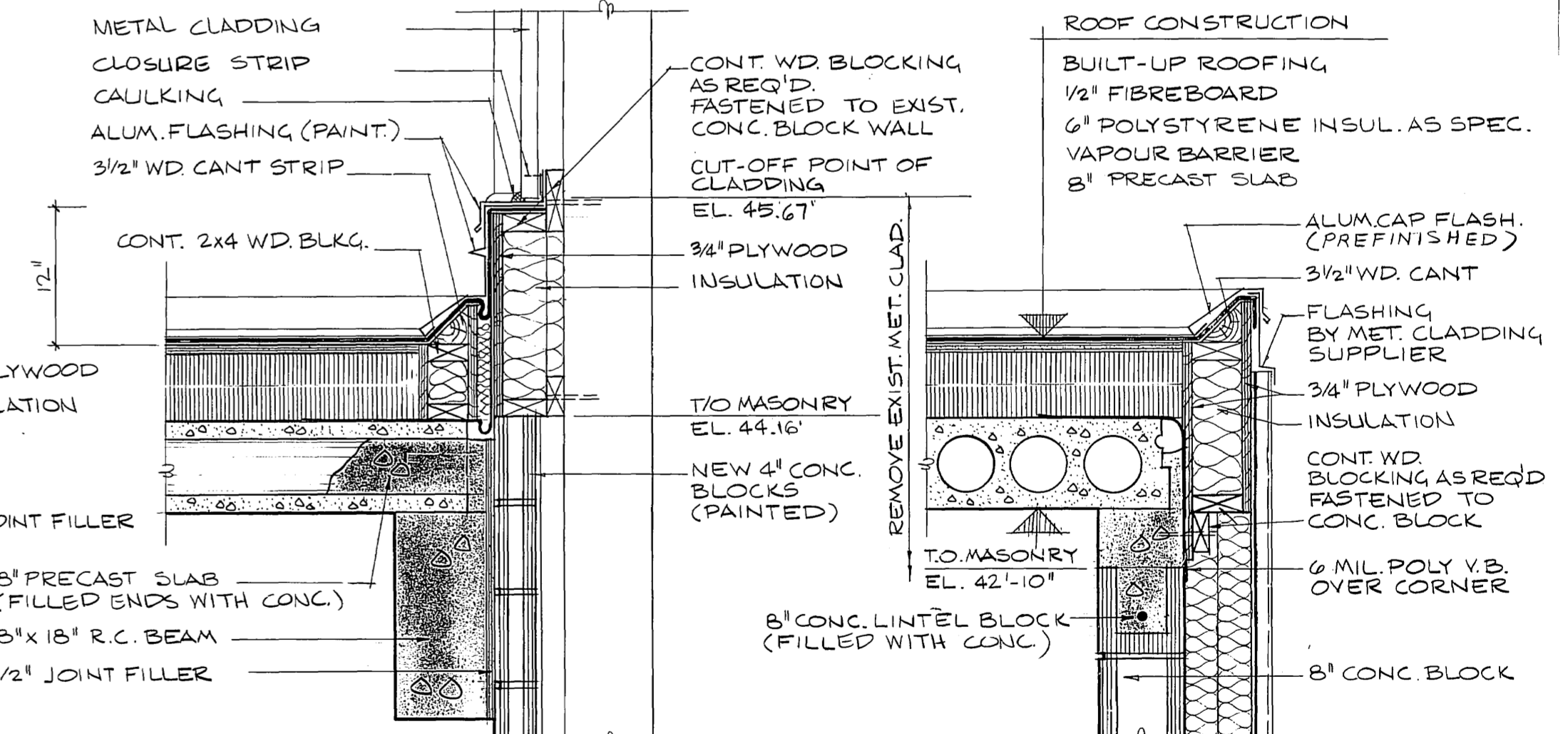
9 DETAIL
 A102/106

10 DETAIL
 A102/106



7 DETAIL
 A102/106 1 1/2" x 1'-0"

8 DETAIL
 A102/106 1 1/2" x 1'-0"



11 DETAIL
 A102/106

12 DETAIL
 A102/106

NO.	DATE	DESCRIPTION



W. L. WARDROP & ASSOCIATES LTD.
JAMES F. MACLAREN LIMITED
 ENGINEERING CONSULTANTS

THE CITY OF WINNIPEG
 WORKS & OPERATIONS DEPARTMENT
 WATERWORKS, WASTE & DISPOSAL DIVISION

DRAWN BY: R.N.
 DESIGNED BY: J.K.
 CHECKED BY: H.G.
 APPROVED BY: J. Maguire

NORTH END WATER POLLUTION CONTROL CENTRE
PRIMARY CLARIFIER ADDITION
ARCHITECTURAL
DETAILS & SCHEDULE

SCALE: AS SHOWN
 DATE: MAY 1978
 CONSULTANT DRAWING NO. 76012-05-A106
 CITY DRAWING NO. NEP-929

NR 11105