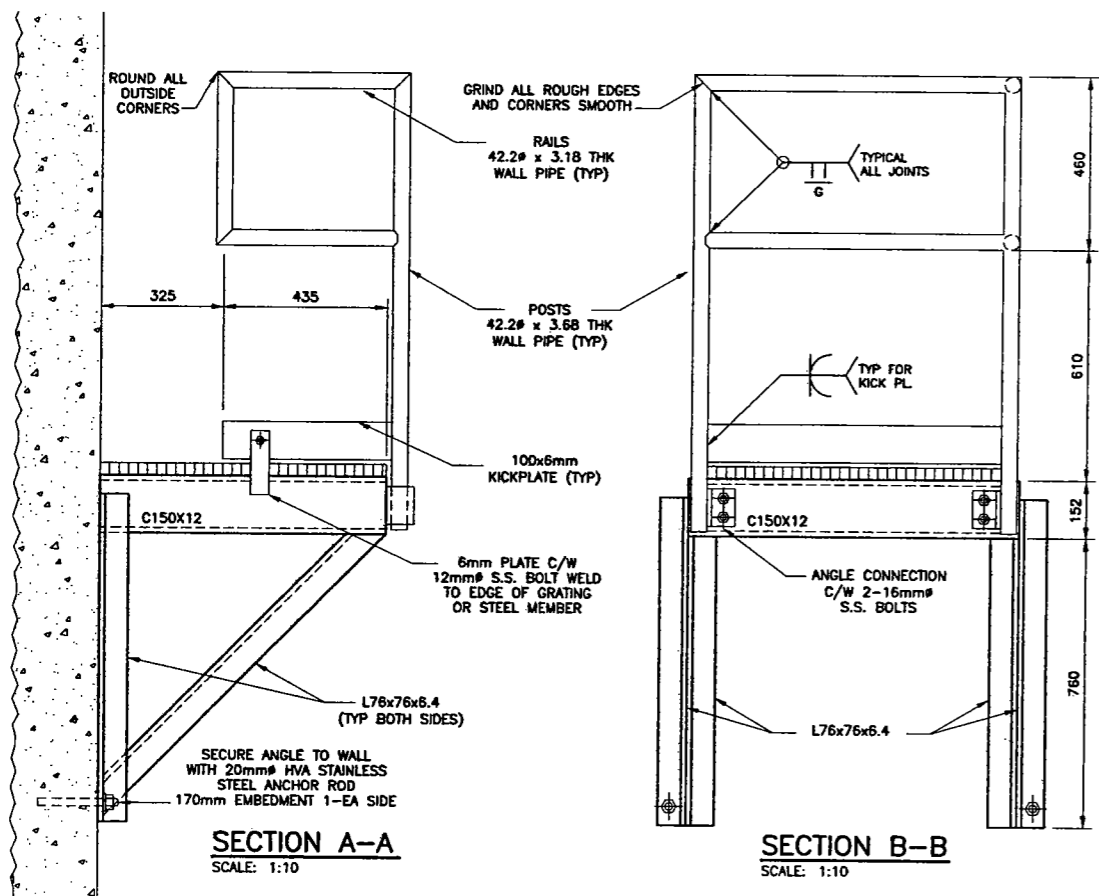


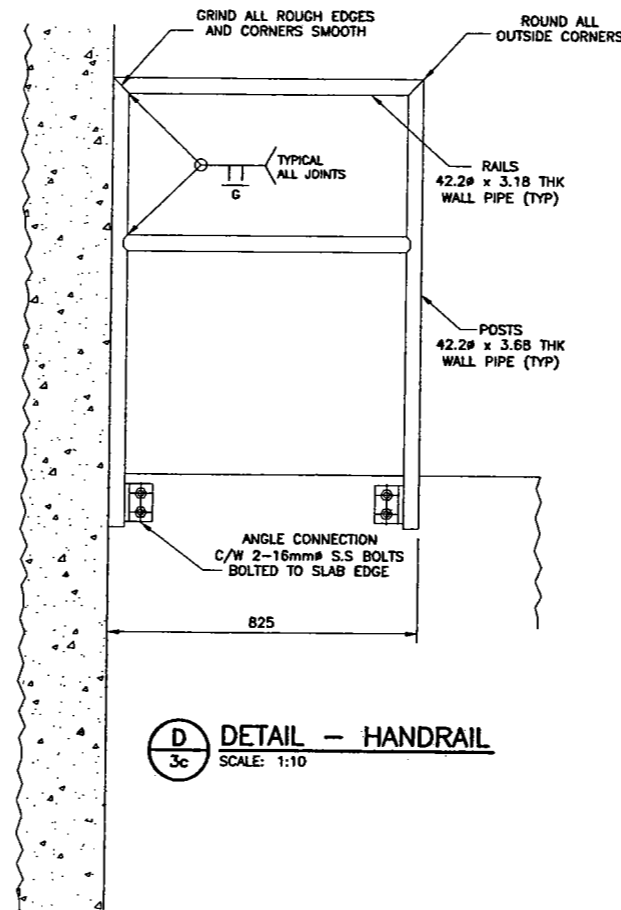
4 DETAIL - REST PLATFORM
SCALE: 1:10
(3 REQ'D)

ALL MATERIALS ON THIS DRAWING TO BE ALUMINUM UNLESS NOTED OTHERWISE

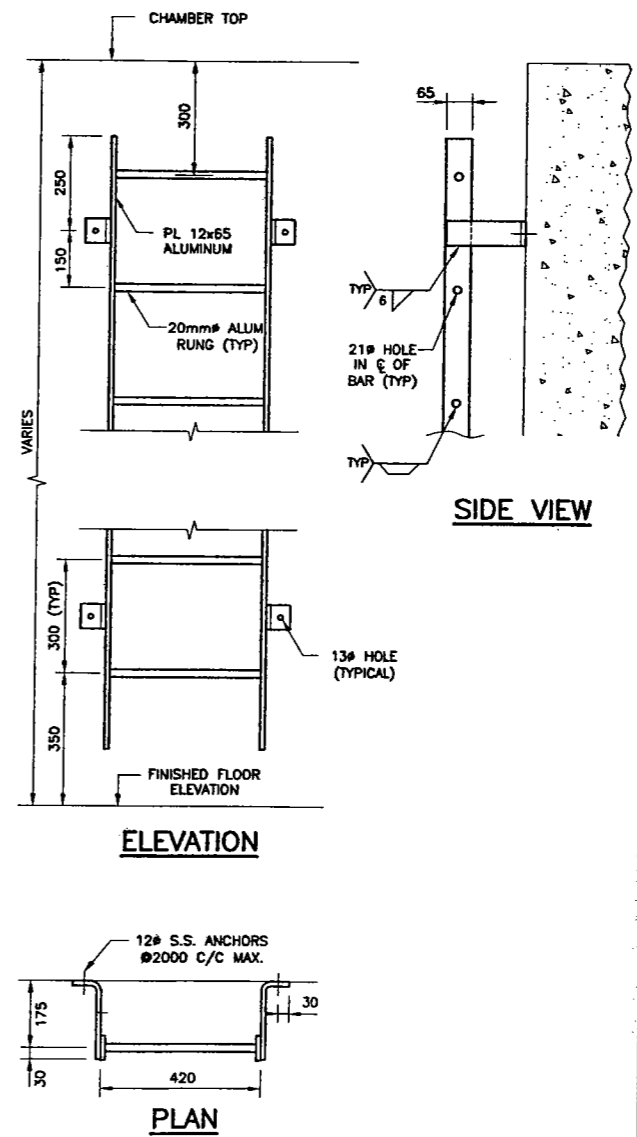


SECTION A-A
SCALE: 1:10

SECTION B-B
SCALE: 1:10



D DETAIL - HANDRAIL
SCALE: 1:10



E TYPICAL LADDER DETAIL
SCALE: 1:10
(5 REQUIRED)

1. REFER TO DRAWING 48aS-001c FOR GENERAL NOTES.

0 1000 2000 3000 4000 5000
SCALE: 1:50mm (24"x36")
1:100mm (11"x17")

NO.	DATE	ISSUED FOR TENDER AND CONSTRUCTION	TF	CMS	JBS
		REVISIONS	BY	CKD	APP.

KGS GROUP

SUBCONSULTANT DWG NO.:

C of A

PROFESSOR OF MECHANICAL ENGINEERING
C.M. SIEPMAN
Member 20813

DESIGNED BY: TF	DRAWN BY: EC	SCALE: AS NOTED
CHECKED BY: CMS	APPROVED BY: J B SMITH	DATE: MAY 2006
KGS GROUP SUBMITTED BY: RICK CARSON		

MANITOBA FLOODWAY AUTHORITY

PROJECT: RED RIVER FLOODWAY EXPANSION

PHASE: MAIN CHANNEL CONTRACT No. C5

TITLE: KILDARE LAND DRAINAGE FLOOD PUMPING STATION STRUCTURAL WORKS

MISCELLANEOUS METAL SECTIONS AND DETAILS

RELEASED FOR CONSTRUCTION:

DOUG McNEIL
VICE PRESIDENT OF ENGINEERING AND CONSTRUCTION

OWNER Dwg NO.:	SHT.	REV.
CC5-48aS-014c	01	00



24"x36" (609x914) 2: \Projects\2005\05-0107-17\Civil\Drawings\REVISION 00\CC5-48aS-014c-01.dwg - Tab: 14c - Apr. 05, 2007 - 3:59pm - User: jgnitzinger