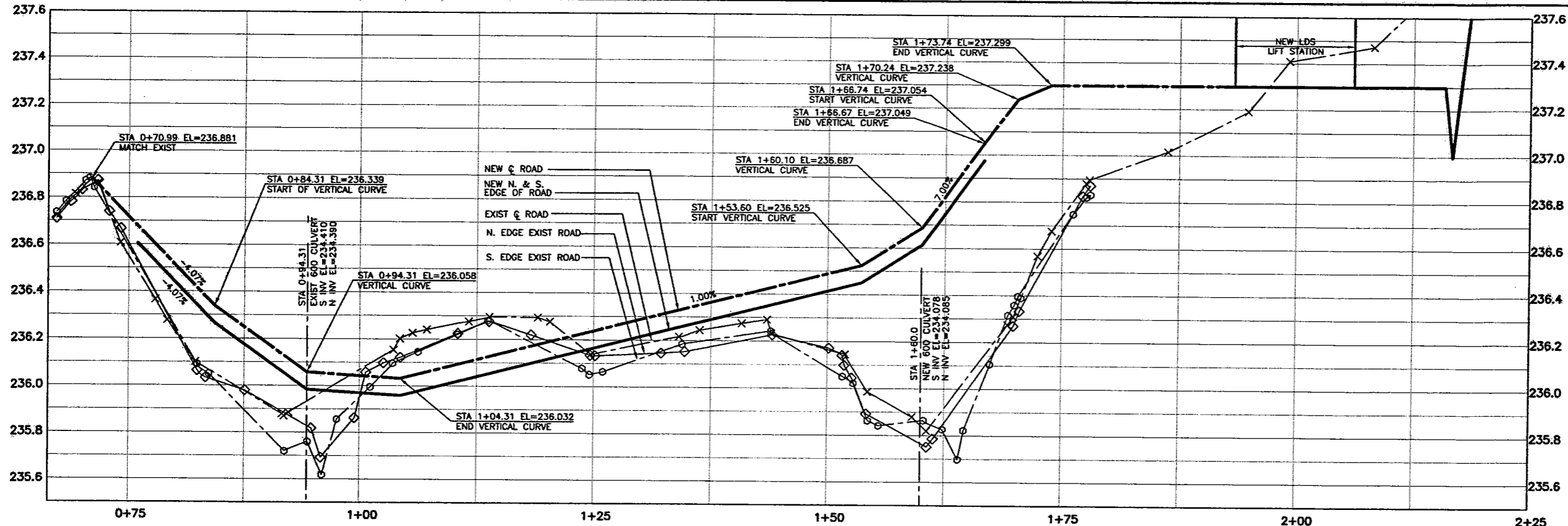


24"x36"/(609x914) X:\projects\2003\03-1100-01\Drawings Construction Contract Dwg\Specification For TENDERERS Dwg\CS-48aC-001c-01-00.dwg - Tab 01 - Apr 05, 2007 - 4:15pm i User:Mike EC:rrrd



LEGEND

- (237.375) DESIGN GRADE ELEVATIONS
- ◊ EXISTING MONITORING WELL
- ⊗ NEW PUMP WELL
- DITCH NEW DITCH

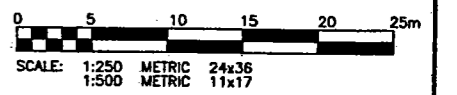
- NOTES**
- PRIORITY A DEPRESSURIZATION WELL SHALL BE LOCATED IN THE FIELD BY THE CONTRACT ADMINISTRATOR TO SUIT SITE AND SHORING CONDITIONS.
 - PRIORITY B DEPRESSURIZATION WELLS MAY BE REQUIRED AS DETERMINED BY THE CONTRACT ADMINISTRATOR

PT #	STATION	NORTHING	EASTING	DESCRIPTION
10	0+87.273	5529601.856	646566.981	Begin Point
11	1+07.134	5529614.472	646804.793	PC
12	1+13.812	5529616.691	646811.091	PT
13	1+78.005	5529639.031	646871.272	End Point

ROAD ALIGNMENT DATA

PT #	NORTHING	EASTING	DESCRIPTION
1	5529653.187	646667.348	C/L Of 5m Radius
2	5529642.980	646660.495	C/L Of 5m Radius
3	5529645.487	646664.869	C/L Of 11.5m Radius
4	5529626.132	646668.563	C/L Of 8m Radius
5	5529649.878	646885.569	Midpoint of Grade Break
6	5529684.356	646697.120	C/L Of 5m Radius
7	5529652.335	646701.629	C/L Of 5m Radius
8	5529626.877	646582.085	C/L Of 18.5m Radius
9	5529685.985	646596.658	C/L Of 22m Radius

TOPOGRAPHIC DATA



DD	04/07/06	ISSUED FOR TENDER AND CONSTRUCTION	RO	RJH	JBS
NO.	DATE	REVISIONS	BY	CHKD.	APP.

KGS GROUP

Subconsultant DWG NO.:

C of A

APEGN
Certificate of Authorization
KGS Group
No. 245 Expiry: April 30, 2007

ENG. STAMP
THE ORIGINAL ISSUE REV. 0 WAS STAMPED, DATED AND SIGNED BY R.J.HOUSTON ON 04/07/06 D/M/Y

DESIGNED BY: RO	DRAWN BY: DW	SCALE: AS NOTED
CHECKED BY: RJH	APPROVED BY: RJH	DATE: JUNE, 2006

KGS GROUP SUBMITTED BY: RICK CARSON

OWNER: **MANITOBA FLOODWAY AUTHORITY**

PROJECT: **RED RIVER FLOODWAY EXPANSION**

PHASE: **MAIN CHANNEL CONTRACT No C5**

TITLE: **KILDARE LAND DRAINAGE FLOOD PUMPING STATION CIVIL WORKS**

ROAD ACCESS PLAN, PROFILE AND SECTIONS

RELEASED FOR CONSTRUCTION:

DOUG McNEIL
VICE PRESIDENT OF ENGINEERING AND CONSTRUCTION

OWNER DWG NO.: CC5-48aC-001c

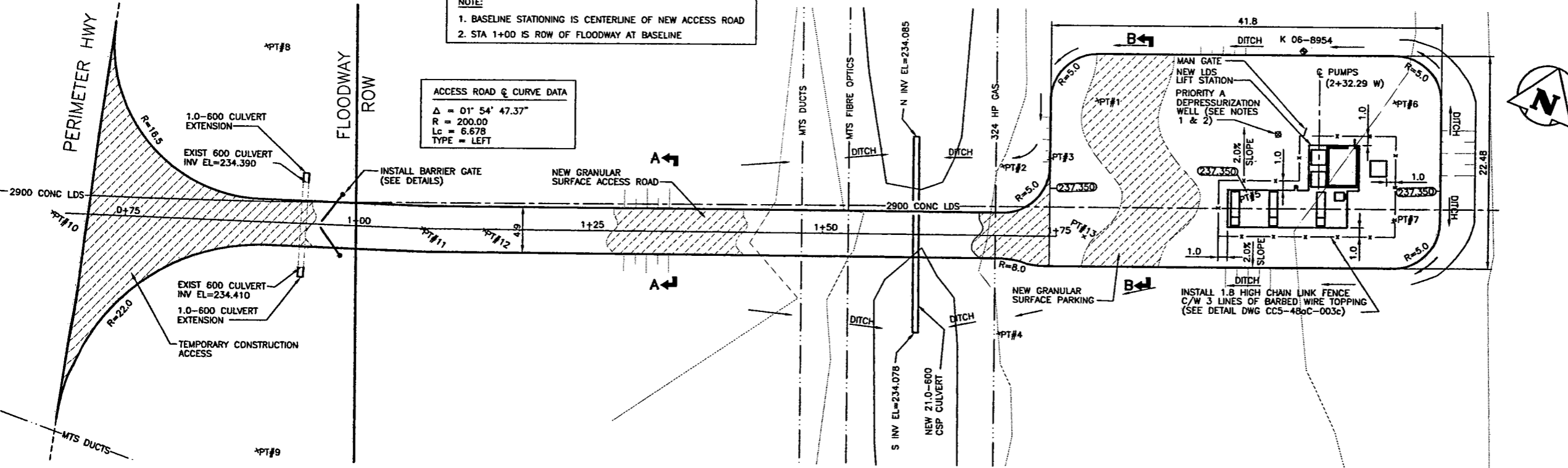
SHT. 01

REV. 00

- NOTE:**
- BASELINE STATIONING IS CENTERLINE OF NEW ACCESS ROAD
 - STA 1+00 IS ROW OF FLOODWAY AT BASELINE

ACCESS ROAD CURVE DATA

Δ	= 01° 54' 47.37"
R	= 200.00
Lc	= 6.678
TYPE	= LEFT



WARNING

IF POWER EQUIPMENT OR EXPLOSIVES ARE TO BE USED FOR EXCAVATION ON THIS PROJECT THE CONTRACTOR MUST:

- NOTIFY THE GAS COMPANY OF THE PROPOSED LOCATION OF EXCAVATION.
- TAKE PRECAUTION TO AVOID DAMAGE TO GAS COMPANY INSTALLATIONS.

SEE PROVINCIAL REGULATION 210/72 FOR DETAILS.

METRIC

WHOLE NUMBERS INDICATE MILLIMETRES
DECIMALIZED NUMBERS INDICATE METRES

