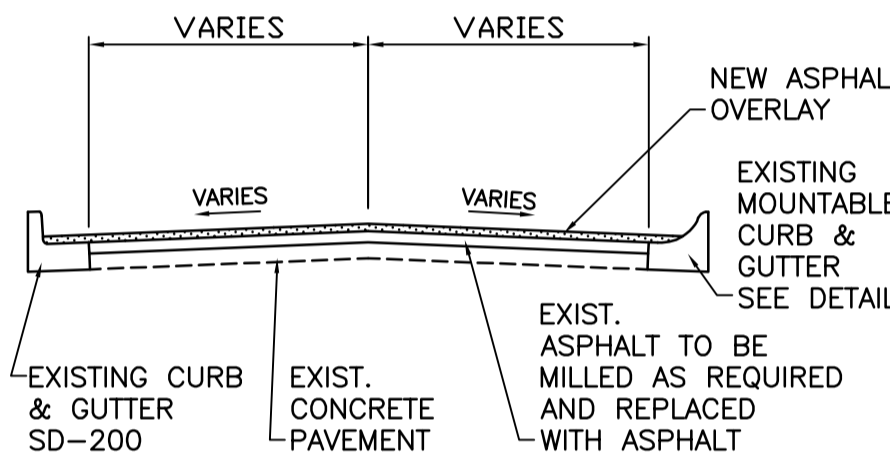
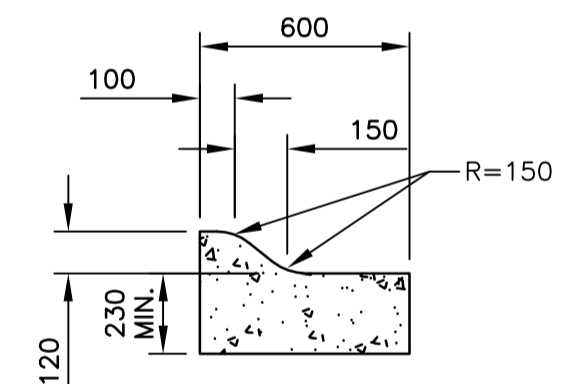


L = 1450 m W = 8.5 m A = 15375 m²
TYPE - MAJOR REHABILITATION

- CONSTRUCTION NOTES:**
1. CONTRACTOR SHALL TAKE PRECAUTIONARY STEPS TO AVOID DAMAGE FROM CONSTRUCTION ACTIVITIES TO EXISTING BOULEVARDS AND TREES WITHIN THE LIMITS OF CONSTRUCTION.
 2. LOCATION OF EXISTING SERVICES ARE TO BE CONFIRMED IN THE FIELD BY THE CONTRACTOR.
 3. TIE-INS TO BE VERIFIED IN THE FIELD BY THE CONTRACT ADMINISTRATOR.
 4. BOULEVARD REPLACEMENT TO BE FINALIZED IN THE FIELD AS DIRECTED BY THE CONTRACT ADMINISTRATOR.
 5. PLACE EXISTING ASPHALT OVERLAY WITHIN CONTRACT LIMITS TO DEPTH INDICATED BY THE CONTRACT ADMINISTRATOR. NOT ALL AREAS WILL REQUIRE PLANING.
 6. CURB AND GUTTER REPLACEMENT TO BE FINALIZED IN THE FIELD AS DIRECTED BY THE CONTRACT ADMINISTRATOR.
 7. JOINT AND SLAB REPAIRS TO BE FINALIZED IN THE FIELD AS DIRECTED BY THE CONTRACT ADMINISTRATOR.
 8. STATIONING ALONG SOUTH GUTTER UNLESS NOTED OTHERWISE.
 9. GRANULAR BOULEVARD TO BE REGRADED AS DIRECTED BY THE CONTRACT ADMINISTRATOR.



CONCRETE ROAD WITH CONCRETE CURB & GUTTER
N.T.S.

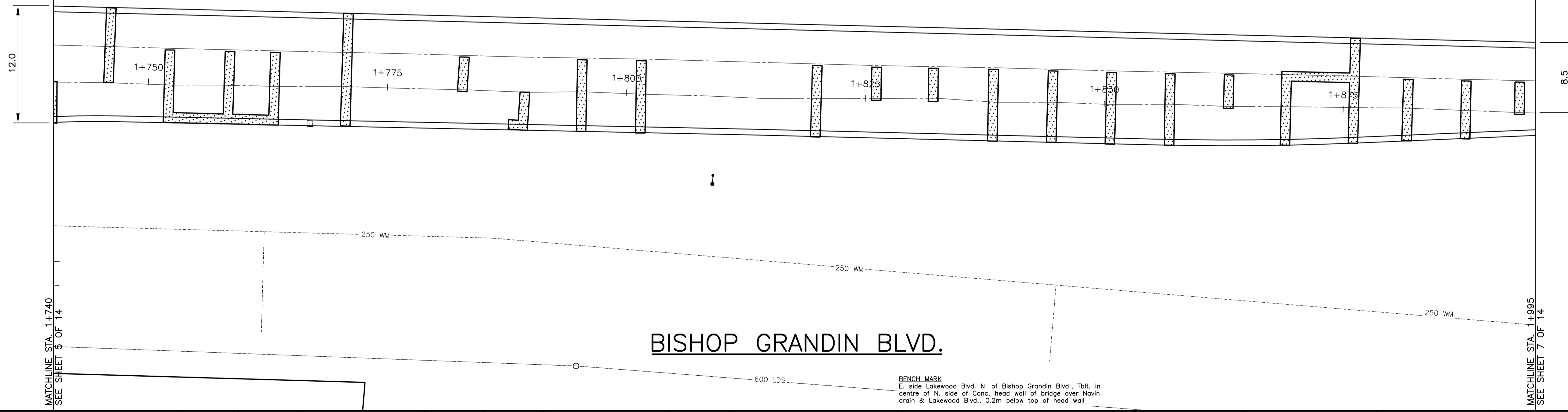


MOUNTABLE CURB & GUTTER
N.T.S.

METRIC
WHOLE NUMBERS INDICATE MILLIMETRES
DECIMALIZED NUMBERS INDICATE METRES

WARNING

- IF POWER EQUIPMENT OR EXPLOSIVES ARE TO BE USED FOR EXCAVATION ON THIS PROJECT THE CONTRACTOR MUST:
1. NOTIFY THE GAS COMPANY OF THE PROPOSED LOCATION OF EXCAVATION.
 2. TAKE PRECAUTION TO AVOID DAMAGE TO GAS COMPANY INSTALLATIONS
SEE PROVINCIAL REGULATION 210/72 FOR DETAILS



BISHOP GRANDIN BLVD.

150 mm W.M.	WATERMAIN	150 mm W.M.	HYDRO M.T.S.	150 mm W.M.	WATERMAIN	150 mm W.M.	WATERMAIN
Hydrant Valve	Hydrant Valve	Concrete	Concrete	Hydrant Valve	Hydrant Valve	Concrete	Concrete
300 mm L.D.S.	LAND DRAINAGE SEWER	300 mm L.D.S.	ASPHALT	300 mm L.D.S.	LAND DRAINAGE SEWER	300 mm L.D.S.	LAND DRAINAGE SEWER
250 mm W.W.S.	WASTE WATER SEWER	250 mm W.W.S.	PLANING	250 mm W.W.S.	WASTE WATER SEWER	250 mm W.W.S.	WASTE WATER SEWER
Manhole	MANHOLE	Sidewalk	Sidewalk	North/West Gutter	NORTH/WEST GUTTER	South/East Gutter	SOUTH/EAST GUTTER
Catch Basin	CATCH BASIN	Partial Depth Repair	PARTIAL DEPTH REPAIR	Property Line	PROPERTY LINE	Survey Bar	SURVEY BAR
Curb Inlet	CURB INLET	Paralegic Ramp	PARALEGIC RAMP	Legend-Plan	LEGEND-PLAN	Legend-Profile	LEGEND-PROFILE
Junctions	JUNCTIONS	Proposed	PROPOSED	Existing	EXISTING	Proposed	PROPOSED
Culvert	CULVERT	Existing	EXISTING	Proposed	PROPOSED	Existing	EXISTING
Gas	GAS	Proposed	PROPOSED	Existing	EXISTING	Proposed	PROPOSED

UNDERGROUND STRUCTURES

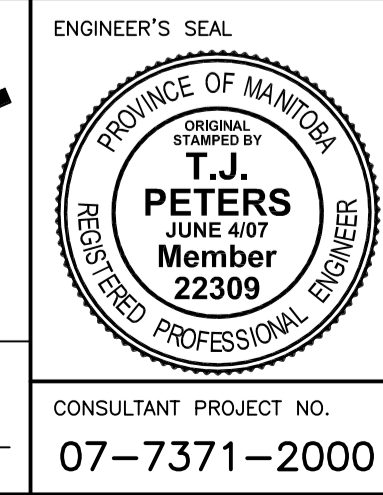
SUPV. U/G STRUCTURES COMMITTEE DATE

NOTE:
LOCATION OF UNDERGROUND STRUCTURES AS SHOWN ARE BASED ON THE BEST INFORMATION AVAILABLE. BUT NO GUARANTEE IS GIVEN THAT ALL EXISTING UTILITIES ARE SHOWN OR THAT THE GIVEN LOCATIONS ARE EXACT. CONFIRMATION OF EXISTENCE AND EXACT LOCATION OF ALL SERVICES MUST BE OBTAINED FROM THE INDIVIDUAL UTILITIES BEFORE PROCEEDING WITH CONSTRUCTION.

BENCH MARK
E. side Lakewood Blvd. N. of Bishop Grandin Blvd., Tblt. in centre of N. side of Conc. head wall of bridge over Navin drain & Lakewood Blvd., 0.2m below top of head wall

B.M. ELEV.	55-017	232.537m
NO.	REVISIONS	DATE BY
2	ISSUED FOR TENDER	06/04/07 TJP
1	ISSUED FOR REVIEW	05/16/07 TJP

DESIGNED BY	TJP
DRAWN BY	PMW
CHECKED BY	DBW
APPROVED BY	ORIGINAL SIGNED BY: DPK
HOR. SCALE	1:250
VERTICAL	1:10
DATE	MAY 2007



THE CITY OF WINNIPEG PUBLIC WORKS DEPARTMENT

BISHOP GRANDIN E. BOUND
ST. ANNE'S RD. TO LAKEWOOD BLVD.
MAJOR REHABILITATION
STA: 1+740 TO STA: 1+995

CITY DRAWING NUMBER **P-3284-6**
SHEET **6** OF **14**

CONSULTANT PROJECT NO. **07-7371-2000**