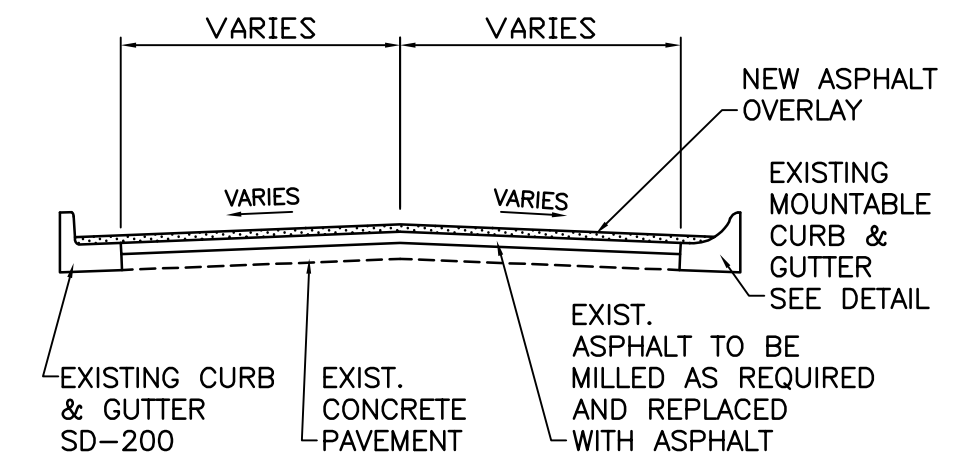


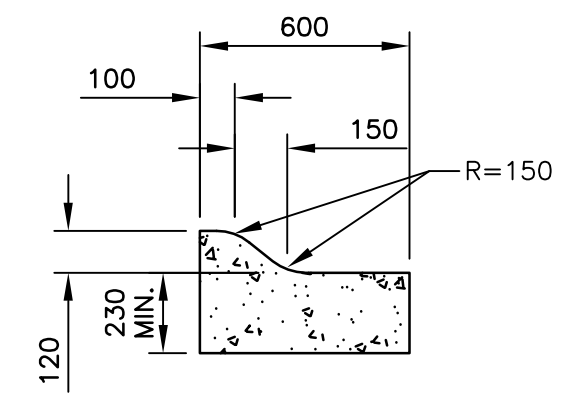
L = 1450 m W = 8.5 m A = 15375 m²
TYPE - MAJOR REHABILITATION

CONSTRUCTION NOTES:

1. CONTRACTOR SHALL TAKE PRECAUTIONARY STEPS TO AVOID DAMAGE FROM CONSTRUCTION ACTIVITIES TO EXISTING BOULEVARDS AND TREES WITHIN THE LIMITS OF CONSTRUCTION.
2. LOCATION OF EXISTING SERVICES ARE TO BE CONFIRMED IN THE FIELD BY THE CONTRACTOR.
3. TIE-INS TO BE VERIFIED IN THE FIELD BY THE CONTRACT ADMINISTRATOR.
4. BOULEVARD REPLACEMENT TO BE FINALIZED IN THE FIELD AS DIRECTED BY THE CONTRACT ADMINISTRATOR.
5. PLACE EXISTING ASPHALT OVERLAY WITHIN CONTRACT LIMITS TO DEPTH INDICATED BY THE CONTRACT ADMINISTRATOR. NOT ALL AREAS WILL REQUIRE PLANING.
6. CURB AND GUTTER REPLACEMENT TO BE FINALIZED IN THE FIELD AS DIRECTED BY THE CONTRACT ADMINISTRATOR.
7. JOINT AND SLAB REPAIRS TO BE FINALIZED IN THE FIELD AS DIRECTED BY THE CONTRACT ADMINISTRATOR.
8. STATIONING ALONG SOUTH GUTTER UNLESS NOTED OTHERWISE.
9. GRANULAR BOULEVARD TO BE REGRADED AS DIRECTED BY THE CONTRACT ADMINISTRATOR.



CONCRETE ROAD WITH CONCRETE CURB & GUTTER
N.T.S.

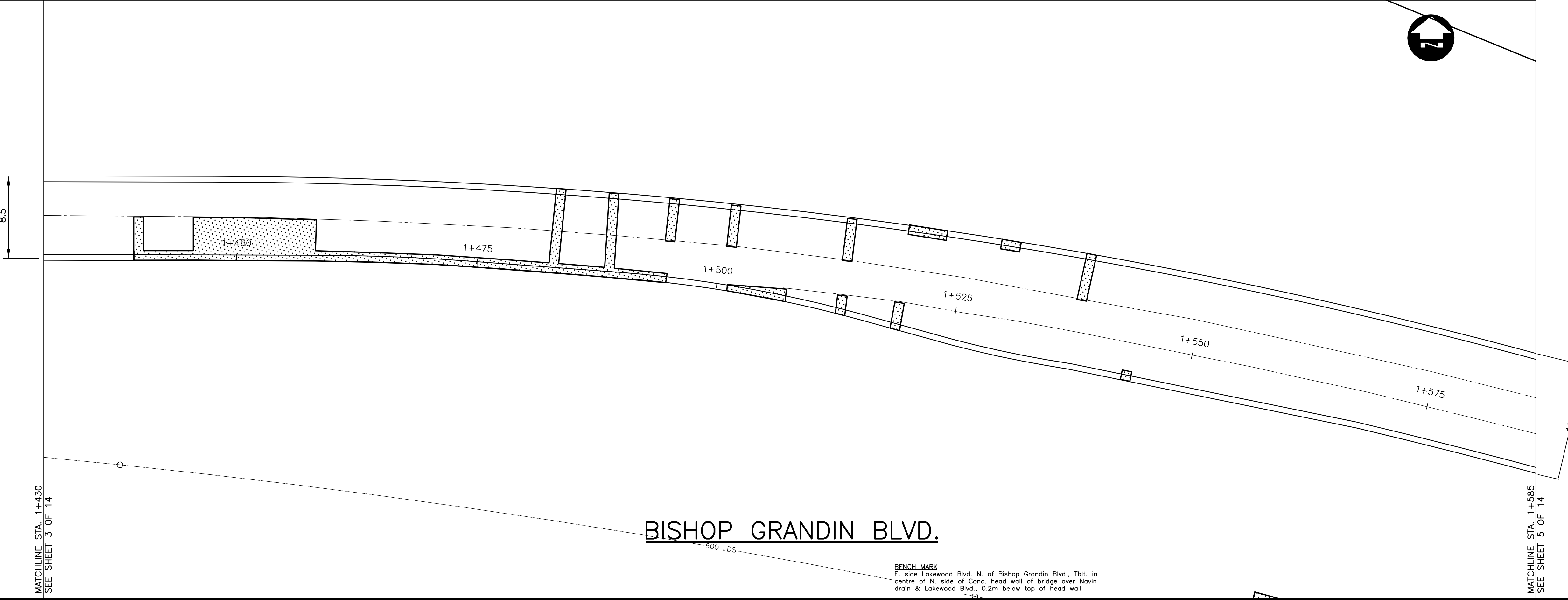
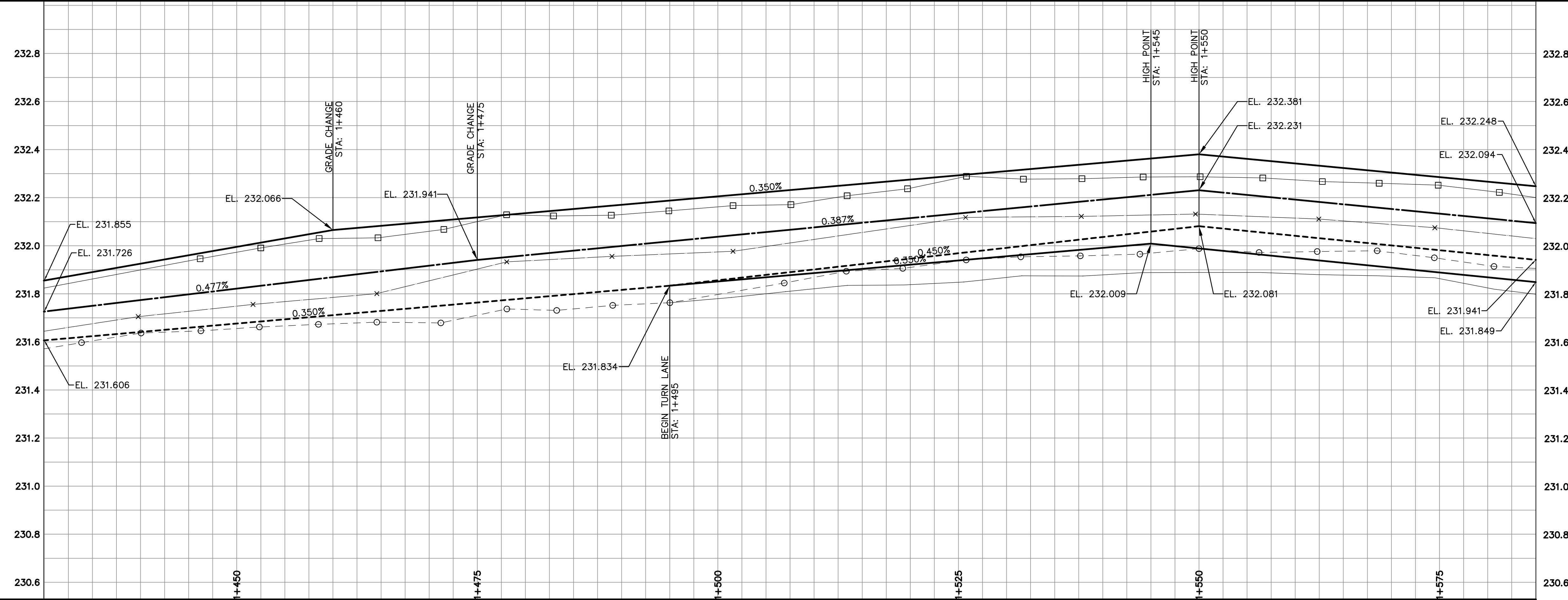


MOUNTABLE CURB & GUTTER
N.T.S.

METRIC
WHOLE NUMBERS INDICATE MILLIMETRES
DECIMALIZED NUMBERS INDICATE METRES

WARNING

- IF POWER EQUIPMENT OR EXPLOSIVES ARE TO BE USED FOR EXCAVATION ON THIS PROJECT THE CONTRACTOR MUST:
1. NOTIFY THE GAS COMPANY OF THE PROPOSED LOCATION OF EXCAVATION.
 2. TAKE PRECAUTION TO AVOID DAMAGE TO GAS COMPANY INSTALLATIONS
SEE PROVINCIAL REGULATION 210/72 FOR DETAILS



BISHOP GRANDIN BLVD.

BENCH MARK
E. side Lakewood Blvd. N. of Bishop Grandin Blvd., Tblt. in centre of N. side of Conc. head wall of bridge over Navin drain & Lakewood Blvd., 0.2m below top of head wall

150 mm W.M.	WATERMAIN	150 mm W.M.	HYDRO	150 mm W.M.	WATERMAIN	150 mm W.M.
⊕	HYDRANT	⊕	M.T.S.	⊕	HYDRANT	⊕
⊗	VALVE	⊗	CONCRETE	⊗	VALVE	⊗
300 mm L.D.S.	LAND DRAINAGE SEWER	300 mm L.D.S.	ASPHALT	300 mm L.D.S.	LAND DRAINAGE SEWER	300 mm L.D.S.
250 mm W.W.S.	WASTE WATER SEWER	250 mm W.W.S.	PLANING	250 mm W.W.S.	WASTE WATER SEWER	250 mm W.W.S.
○	MANHOLE	●	SIDEWALK	⊖	MANHOLE	○
□	CATCH BASIN	■	PAVING STONES	⊖	CATCH BASIN	□
▽	CURB INLET	▼	PARTIAL DEPTH REPAIR	⊖	CURB INLET	▽
⊕	JUNCTIONS	⊕	PROPERTY LINE	⊕	JUNCTIONS	⊕
⊖	CULVERT	⊖	SURVEY BAR	⊖	CULVERT	⊖
⊖	GAS	⊖	PARAPLEGIC RAMP	⊖	GAS	⊖
---	EXISTING	---	PROPOSED	---	EXISTING	---
---	LEGEND-PLAN	---	PROPOSED	---	LEGEND-PROFILE	---

UNDERGROUND STRUCTURES		B.M. ELEV.	55-017 232.537m
SUPV. U/G STRUCTURES COMMITTEE	DATE	DESIGNED BY	TJP
NOTE:	LOCATION OF UNDERGROUND STRUCTURES AS SHOWN ARE BASED ON THE BEST INFORMATION AVAILABLE. BUT NO GUARANTEE IS GIVEN THAT ALL EXISTING UTILITIES ARE SHOWN OR THAT THE GIVEN LOCATIONS ARE EXACT. CONFIRMATION OF EXISTENCE AND EXACT LOCATION OF ALL SERVICES MUST BE OBTAINED FROM THE INDIVIDUAL UTILITIES BEFORE PROCEEDING WITH CONSTRUCTION.	DRAWN BY	PMW
		CHECKED BY	DBW
		APPROVED BY	ORIGINAL SIGNED BY: DPK
		HOR. SCALE	1:250
		VERTICAL	1:10
		RELEASED FOR CONSTRUCTION	ORIGINAL SIGNED BY: KEN TURKO
		DATE	MAY 2007
		CONSULTANT PROJECT NO.	07-7371-2000
		NO. REVISIONS	
		DATE	
		BY	

DILLON CONSULTING

ENGINEER'S SEAL
PROVINCE OF MANITOBA
ORIGINAL STAMPED BY
T.J. PETERS
JUNE 4/07
Member
22309
REGISTERED PROFESSIONAL ENGINEER

RELEASING AUTHORITY
DATE

THE CITY OF WINNIPEG
PUBLIC WORKS DEPARTMENT

BISHOP GRANDIN E. BOUND
ST. ANNE'S RD. TO LAKEWOOD BLVD.
MAJOR REHABILITATION
STA: 1+430 TO STA: 1+585

CITY DRAWING NUMBER
P-3284-4
SHEET 4 OF 14