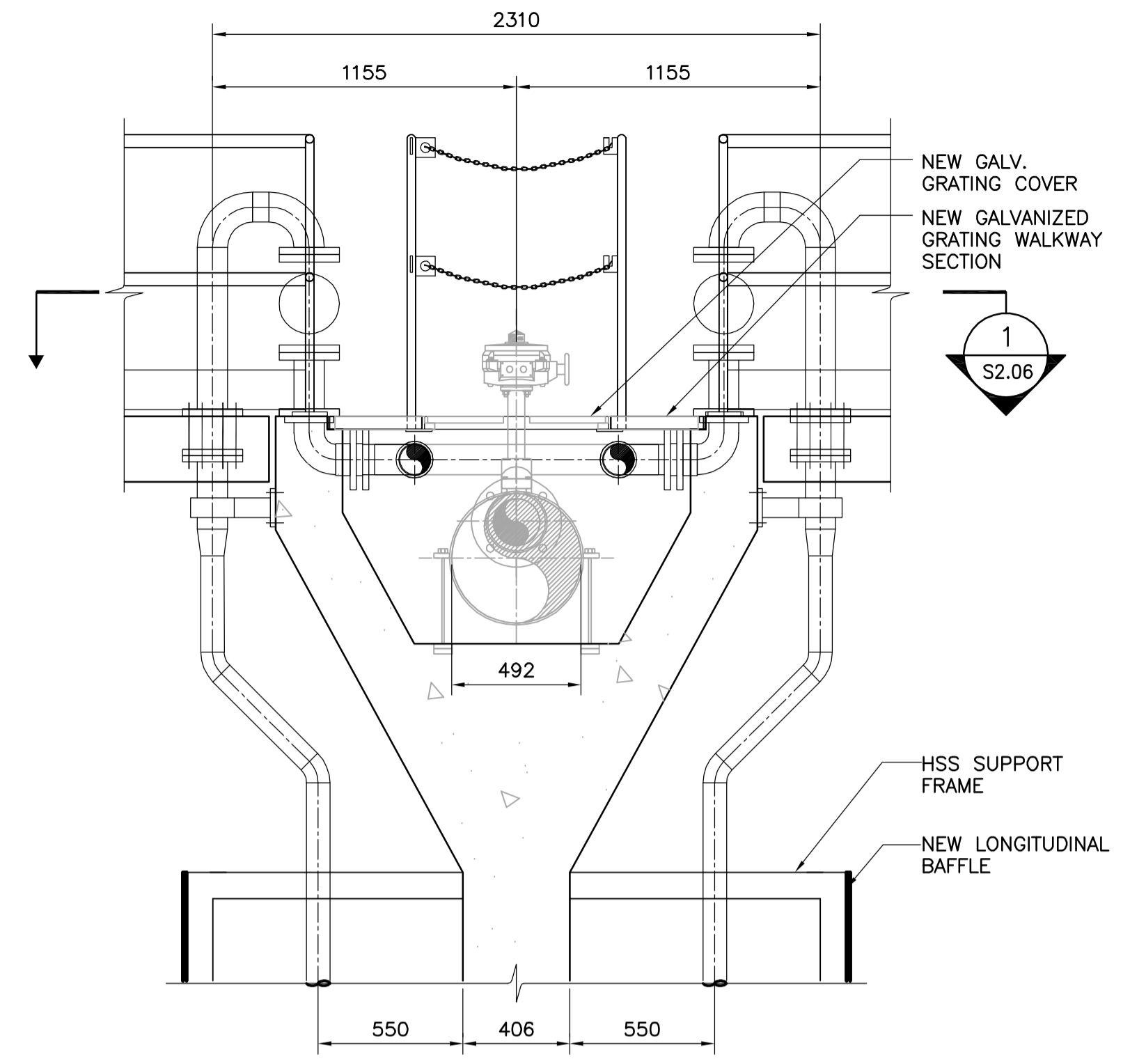
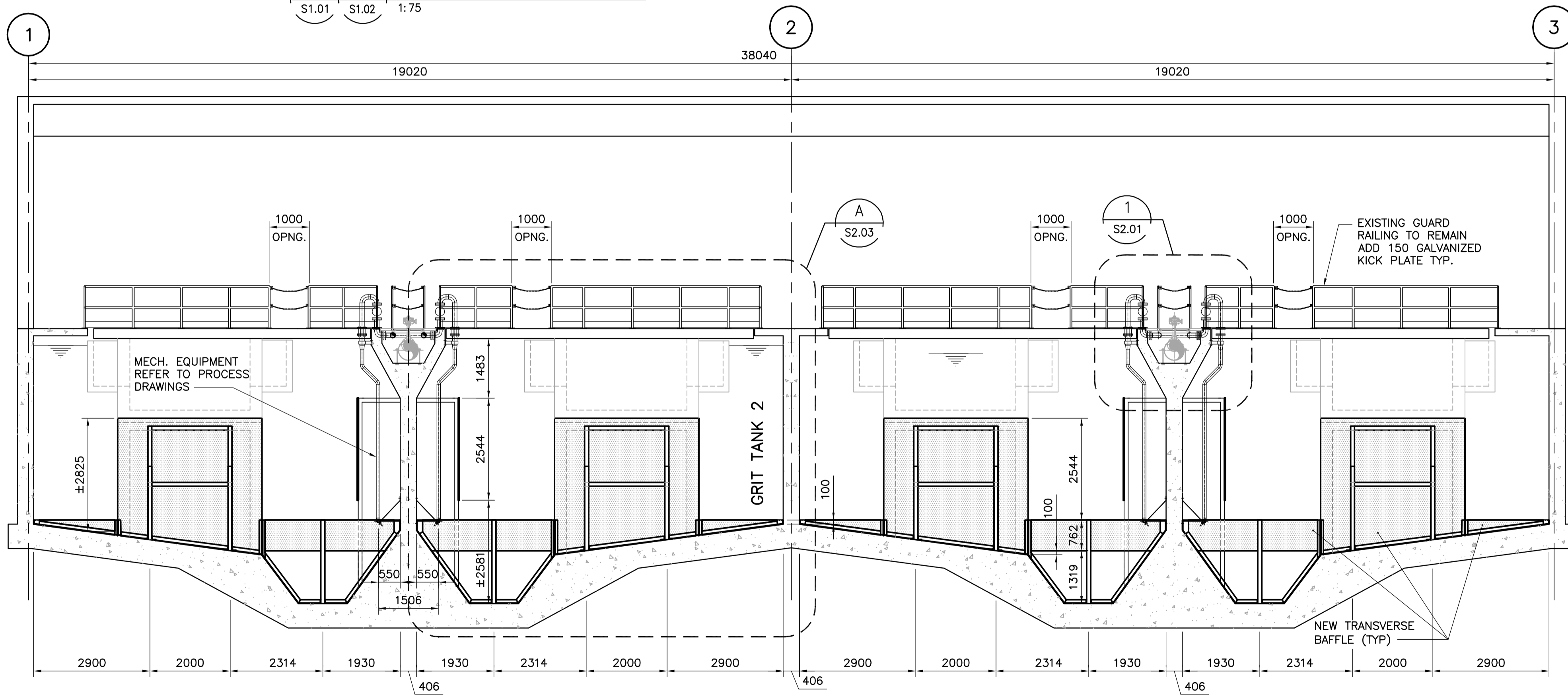


**BUILDING SECTION - PARTIAL**  
 A A  
 S1.01 S1.02 1:75



**SECTION DETAIL**  
 1  
 S2.01 1:20



**BUILDING SECTION**  
 B B  
 S1.01 S1.02 1:75

NOTE:  
 THE FRP MEMBER SIZES & CONNECTIONS SHOWN ON THESE DRAWINGS ARE APPROXIMATE & ARE TO BE DESIGNED BY THE FABRICATOR UNDER SEAL BY A PROFESSIONAL ENGINEER REGISTERED IN THE PROVINCE OF MANITOBA.

NOTE:  
 ALL TROUGHS HAVE STEEL ARMOR PLATE CASING ON SLOPED SURFACES AND 3-20 LBS RAILS PLACED ON FLOOR OF TROUGHS AND BONDED TOPPING POURED OVER THEM. NOT SHOWN FOR CLARITY.

B.M. ELEV.			
DESIGNED BY	GGP	CHECKED BY	LLR
DRAWN BY	CMF	APPROVED BY	H.H.
HOR. SCALE:	AS NOTED	RELEASED FOR CONSTRUCTION BY:	K. MARTENS
VERTICAL SCALE:		DATE	2007/03/07
00 ISSUED FOR TENDER	07/03/07	CMF	
NO. REVISIONS	DATE	BY	
	2006/10/24		



ENGINEER'S SEAL  
 ORIGINAL SIGNED BY  
 L.L. RIDING  
 2007/03/07  
 CONSULTANT DRAWING NO.  
 S2.01

**THE CITY OF WINNIPEG**  
 WATER AND WASTE DEPARTMENT  
 ENGINEERING DIVISION

Winnipeg

NEWPCC  
 GRIT HANDLING UPGRADES  
 CONTRACT 1

STRUCTURAL  
 BUILDING SECTIONS & DETAILS

CITY FILE NUMBER  
 SHEET OF  
 CITY DRAWING NUMBER