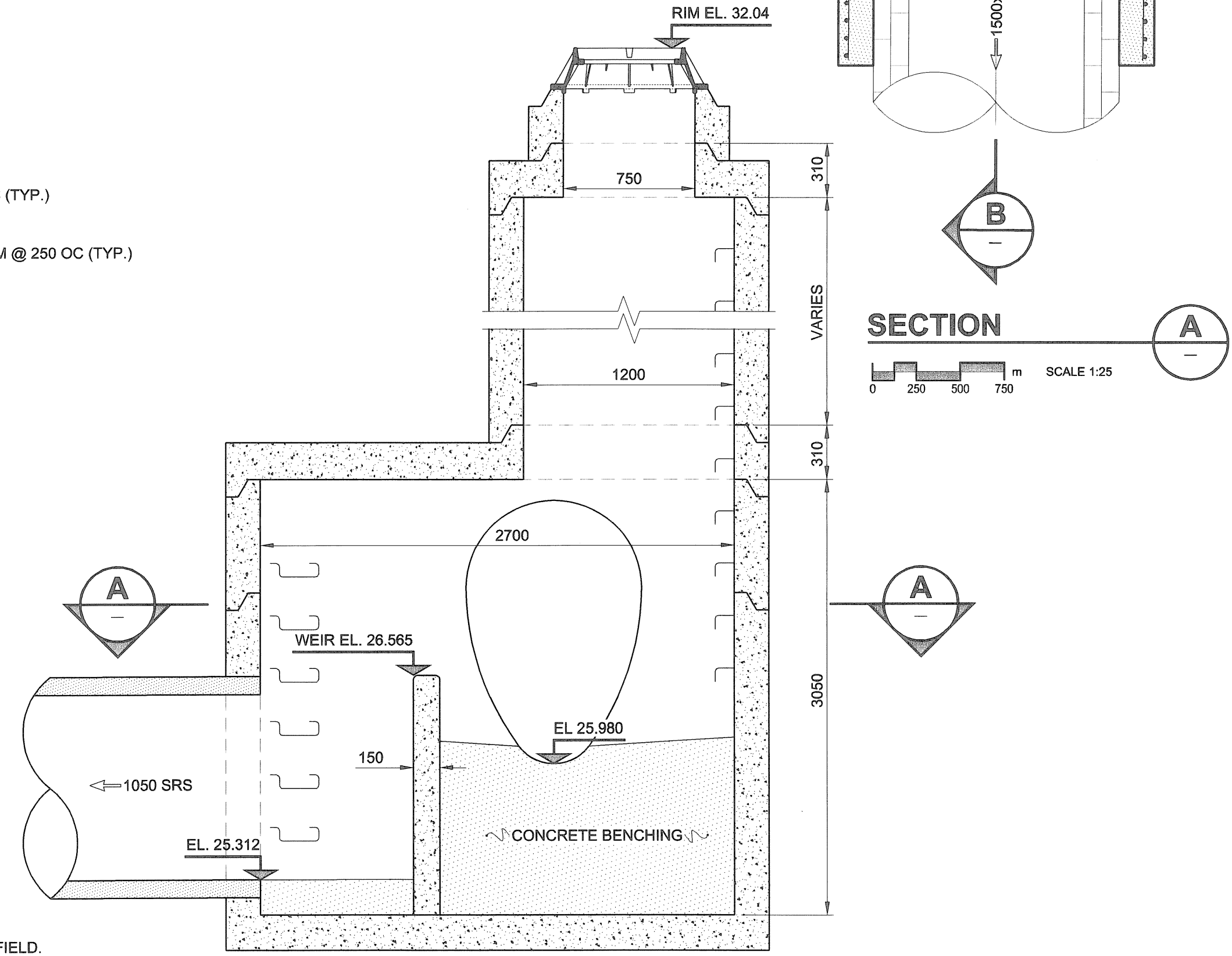
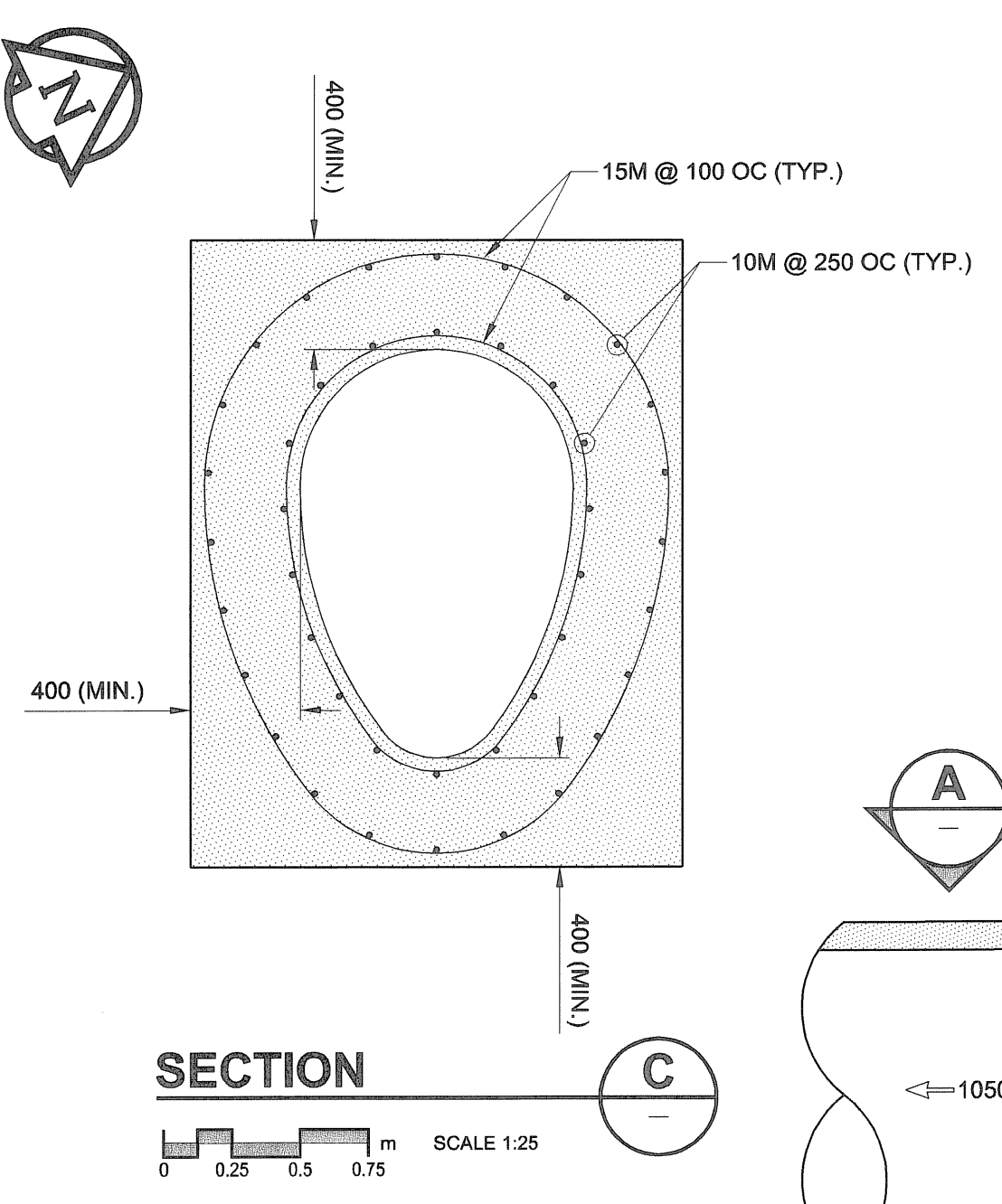
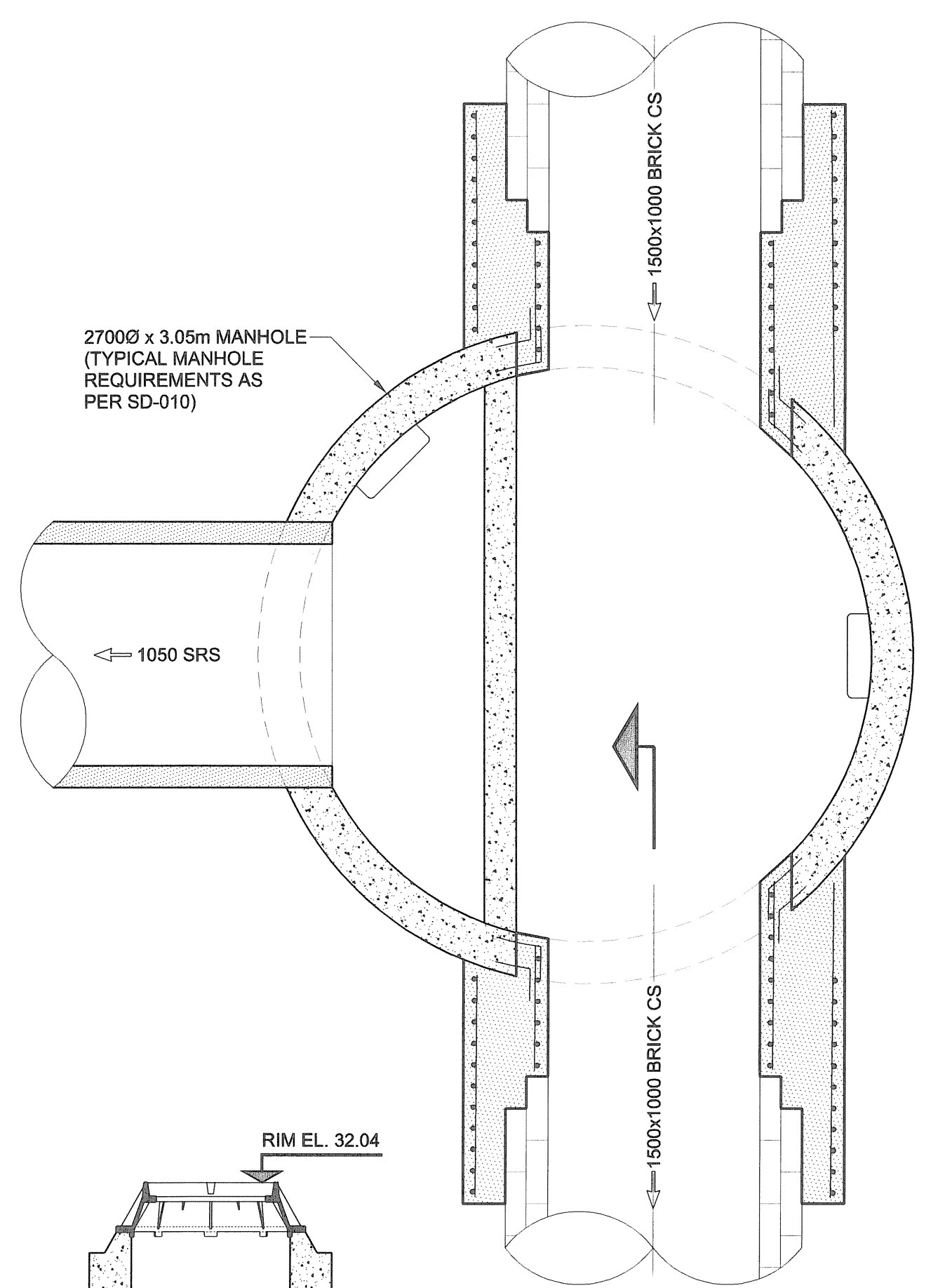
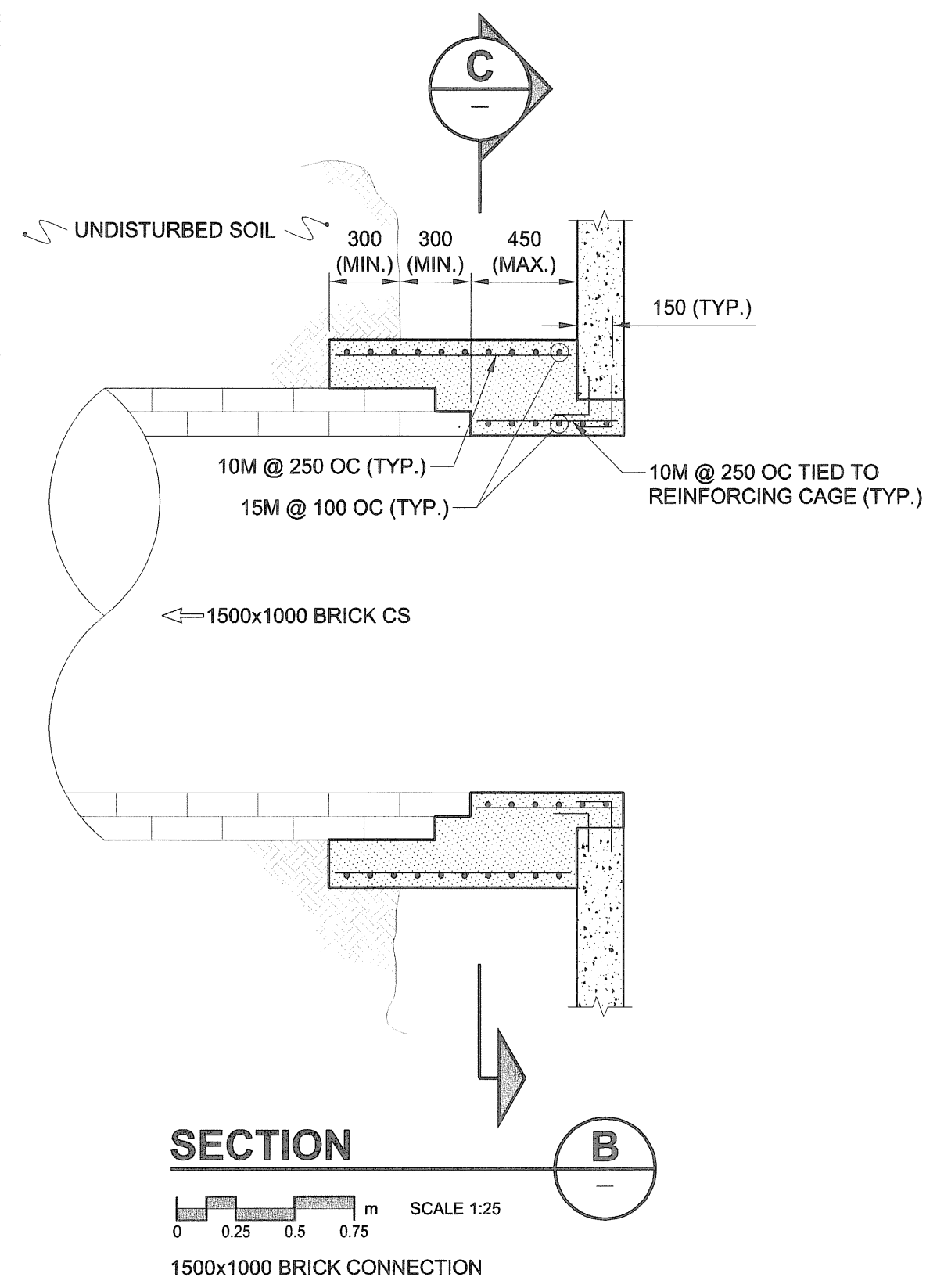
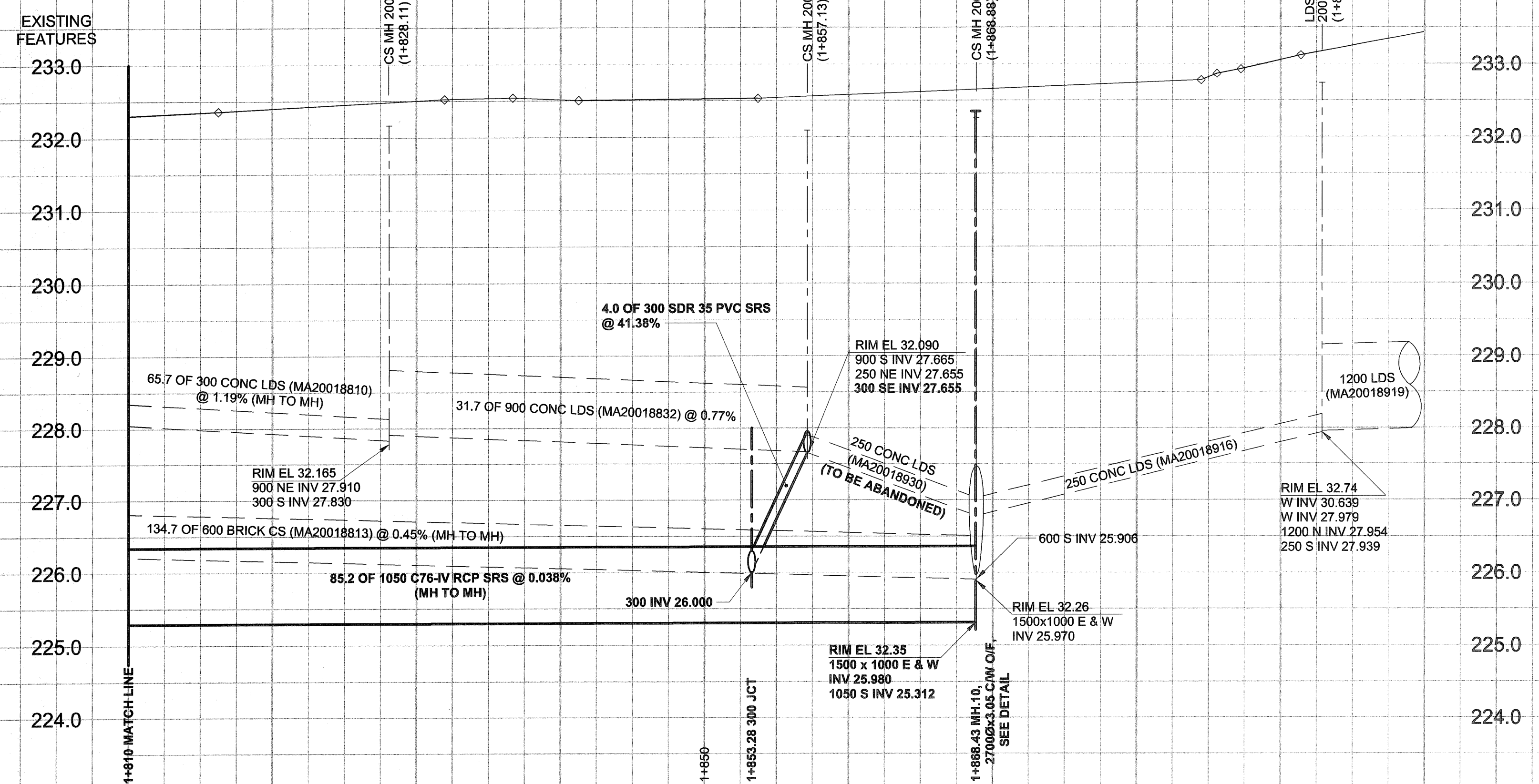


D SIZE 22" x 34" (559mm x 864mm)

PLOT: 07/04/10 9:16:52 AM

UMA FILE NAME: D265-177-03\_01-C-1005\_RX.dwg Saved By: kberand c



- CONSTRUCTION NOTES:
- FOR DETAILED TEST HOLE INFORMATION, SEE SPECIFICATION.
  - THE LOCATION OF ALL SERVICES IS TO BE CONFIRMED IN THE FIELD.
  - INSTALL NEW SEWERS AND CATCHBASIN LEADS BY TRENCHLESS METHODS WHEREVER POSSIBLE.
  - RENEW/REHABILITATE CATCHBASINS & RENEW CATCHBASIN LEADS WHERE NOTED.

METRIC  
WHOLE NUMBERS INDICATE MILLIMETRES  
DECIMALIZED NUMBERS INDICATE METRES

**APEGM**  
Certificate of Authorization  
UMA Engineering Ltd.  
No. 256 Expiry: April 30, 2007

**WARNING**  
IF POWER EQUIPMENT OR EXPLOSIVES ARE TO BE USED FOR EXCAVATION ON THIS PROJECT, THE CONTRACTOR MUST:  
1) NOTIFY THE GAS COMPANY OF THE PROPOSED LOCATION OF EXCAVATION.  
2) TAKE PRECAUTION TO AVOID DAMAGE TO GAS COMPANY INSTALLATIONS.  
SEE PROVINCIAL REGULATION 140/92 FOR DETAILS.

150 mm WM	WATERMAIN	150 mm WM	CURB STOP	150 mm WM	WATERMAIN	150 mm WM	LOCATION APPROVED
	HYDRANT		REDUCER		HYDRANT		UNDERGROUND STRUCTURES
	VALVE		COUPLING		VALVE		SUPR. U/G STRUCTURES DATE COMMITTEE
	LAND DRAINAGE SEWER		ANODE		LAND DRAINAGE SEWER		NOTE: LOCATION OF UNDERGROUND STRUCTURES AS SHOWN ARE BASED ON THE BEST INFORMATION AVAILABLE. BUT NO GUARANTEE IS GIVEN THAT ALL EXISTING UTILITIES ARE SHOWN OR THAT THE GIVEN LOCATIONS ARE EXACT. CONFIRMATION OF EXISTENCE AND EXACT LOCATION OF ALL SERVICES MUST BE OBTAINED FROM THE INDIVIDUAL UTILITIES BEFORE PROCEEDING WITH CONSTRUCTION.
	WASTE WATER SEWER		HYDRO		WASTE WATER SEWER		
	MANHOLE		MTS		PAVEMENT CROWN		
	CATCH BASIN		GAS		N/W PROPERTY LINE		
	CURB INLET		TESTHOLE		S/E PROPERTY LINE		
	CULVERT		LAMP STANDARD		N/W GUTTER		
	PIPE ABANDONMENTS		TREE		S/E GUTTER		
	SURVEY BAR						
EXISTING	LEGEND - PLAN	NEW	EXISTING	LEGEND - PLAN	NEW	EXISTING	LEGEND - PROFILE

NO.	ISSUED FOR CONSTRUCTION	DATE	BY
0	ISSUED FOR CONSTRUCTION	07/04/10	KMB
	REVISIONS	YYMMDD	BY

DESIGNED BY	CHECKED BY
GEB/DME	
DRAWN BY	APPROVED BY
KMB	
HOR. SCALE	VERT. SCALE
1:250	1:50
DATE	DATE
07/24/11	

PROFESSIONAL'S SEAL  
PROVINCE OF MANITOBA  
REGISTERED PROFESSIONAL ENGINEER  
A. NAGY  
April 11, 2007  
CONSULTANT DRAWING NO. 05  
D265-177-03

**THE CITY OF WINNIPEG**  
WATER AND WASTE DEPARTMENT

ALEXANDER/BANNATYNE  
COMBINED SEWER RELIEF  
CONTRACT 3B

ISABEL STREET  
28m NORTH OF ALEXANDER AVENUE  
TO LOGAN AVENUE

SHEET 5 OF 11  
CITY DRAWING NUMBER  
LD-3485  
REV 0

BID OPPORTUNITY NO. 167-2007