

D SIZE 22" x 34" (559mm x 864mm)

PLOT: 07/04/10 9:18:15 AM

UMA FILE NAME: D265-177-03 01-C-1004 RX.dwg Saved By: tberard

EXISTING FEATURES

233.0

232.0

231.0

230.0

229.0

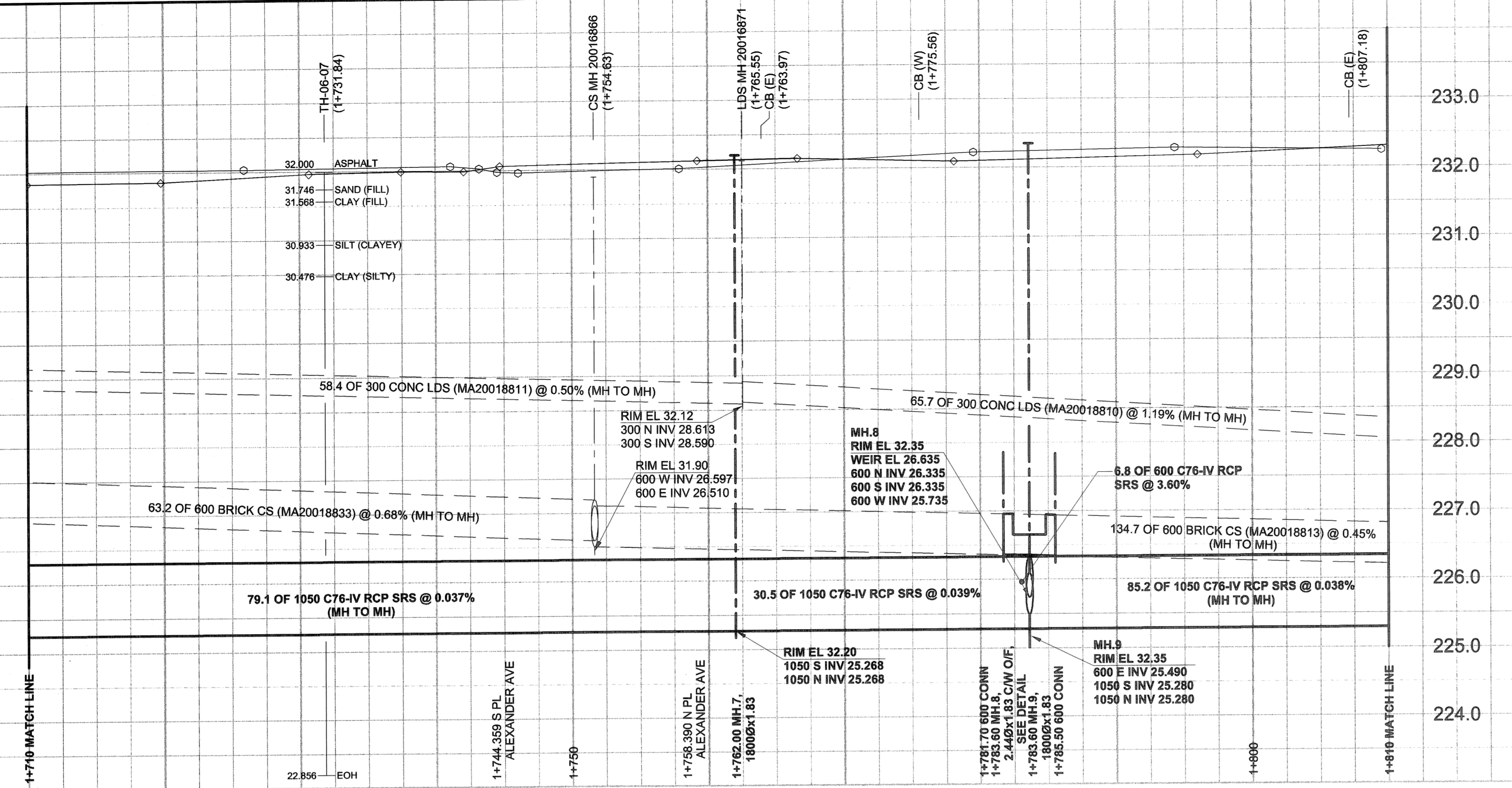
228.0

227.0

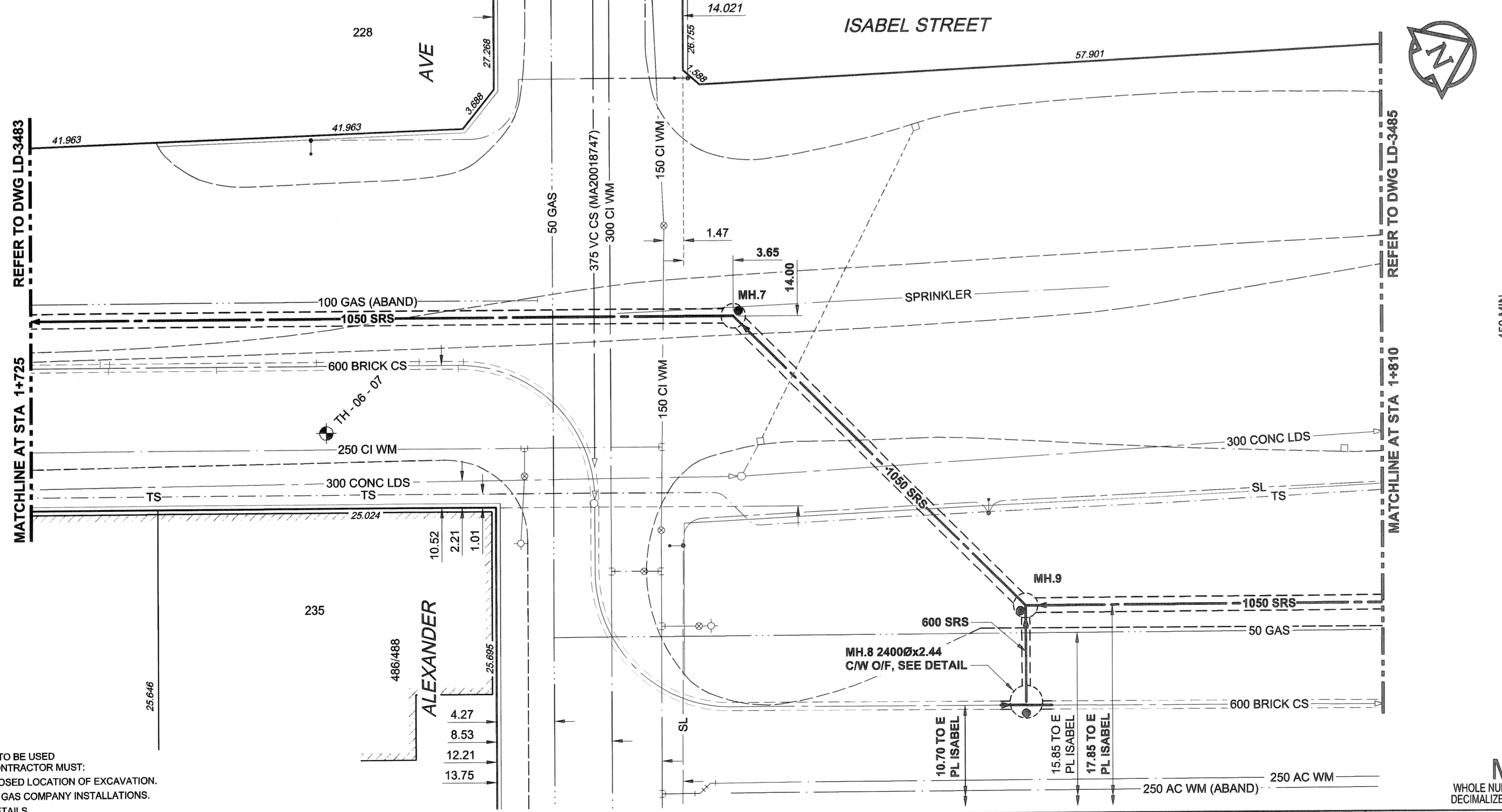
226.0

225.0

224.0



CHAINAGE ALONG E PL



WARNING

IF POWER EQUIPMENT OR EXPLOSIVES ARE TO BE USED FOR EXCAVATION ON THIS PROJECT, THE CONTRACTOR MUST:

- 1) NOTIFY THE GAS COMPANY OF THE PROPOSED LOCATION OF EXCAVATION.
- 2) TAKE PRECAUTION TO AVOID DAMAGE TO GAS COMPANY INSTALLATIONS.

SEE PROVINCIAL REGULATION 140/92 FOR DETAILS

150 mm WM	150 mm WM	150 mm WM	150 mm WM	150 mm WM	150 mm WM	150 mm WM	150 mm WM
WATERMAIN	HYDRANT	VALVE	REDUCER	COUPLING	ANODE	HYDRO	MTS
LAND DRAINAGE SEWER	WASTE WATER SEWER	MANHOLE	CATCH BASIN	CURB INLET	CULVERT	PIPE ABANDONMENTS	SURVEY BAR
EXISTING	NEW	EXISTING	NEW	EXISTING	NEW	EXISTING	NEW

LOCATION APPROVED
UNDERGROUND STRUCTURES

DATE COMMITTEE

NOTE:
LOCATION OF UNDERGROUND STRUCTURES AS SHOWN ARE BASED ON THE BEST INFORMATION AVAILABLE, BUT NO GUARANTEE IS GIVEN THAT ALL EXISTING UTILITIES ARE SHOWN OR THAT THE GIVEN LOCATIONS ARE EXACT. CONFIRMATION OF EXISTENCE AND EXACT LOCATION OF ALL SERVICES MUST BE OBTAINED FROM THE INDIVIDUAL UTILITIES BEFORE PROCEEDING WITH CONSTRUCTION.

BM 36-041
ELEV 232.473m

N. side Elgin Ave., W. of Isabel St., Tbl. In S. Conc. wall No. 515 Elgin Ave., 0.9m E. & 0.3m A.G.L. from S.W. Cor. of Conc. wall.

UMA | AECOM

© 2005 UMA ENGINEERING LTD. ALL RIGHTS RESERVED.

DESIGNED BY: GEB/DME
CHECKED BY: [Signature]
APPROVED BY: [Signature]
RELEASED FOR CONSTRUCTION: [Signature]
DATE: 01/02/11

APEN
Certificate of Authorization
UMA Engineering Ltd.
No. 256 Expiry: April 30, 2007

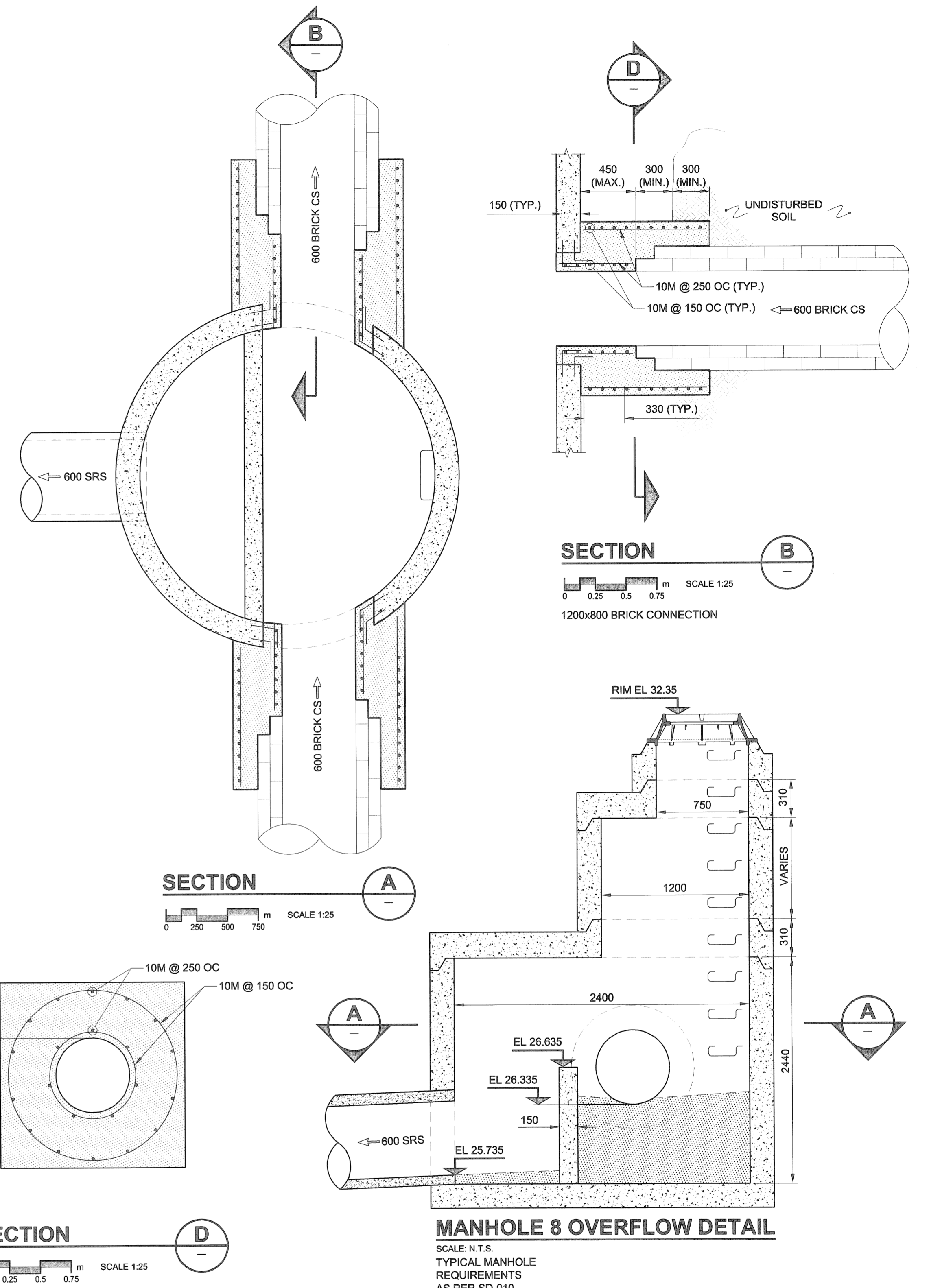
PROFESSIONAL'S SEAL
A. NAGY
REGISTERED PROFESSIONAL ENGINEER
CONSULTANT DRAWING NO. 04
D265-177-03

THE CITY OF WINNIPEG
WATER AND WASTE DEPARTMENT

ALEXANDER/BANNATYNE
COMBINED SEWER RELIEF
CONTRACT 3B

ISABEL STREET
28m NORTH OF PACIFIC AVENUE
40m SOUTH OF LOGAN AVENUE

SHEET 4 OF 11
CITY DRAWING NUMBER
LD-3484



- CONSTRUCTION NOTES:**
1. FOR DETAILED TEST HOLE INFORMATION, SEE SPECIFICATION.
 2. THE LOCATION OF ALL SERVICES IS TO BE CONFIRMED IN THE FIELD.
 3. INSTALL NEW SEWERS AND CATCHBASIN LEADS BY TRENCHLESS METHODS WHEREVER POSSIBLE.
 4. RENEW/REHABILITATE CATCHBASINS & RENEW CATCHBASIN LEADS WHERE NOTED.

BID OPPORTUNITY NO. 167-2007