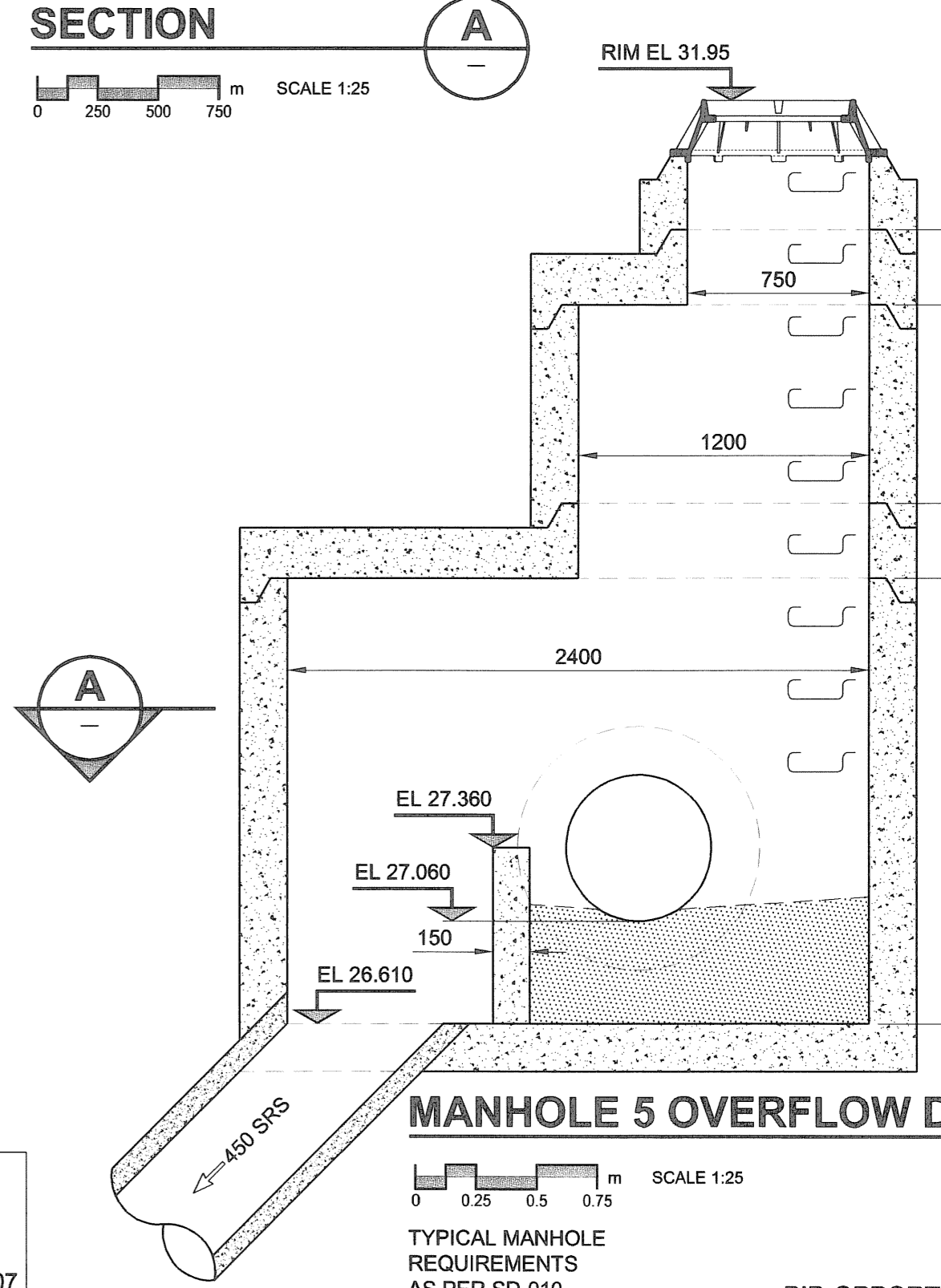
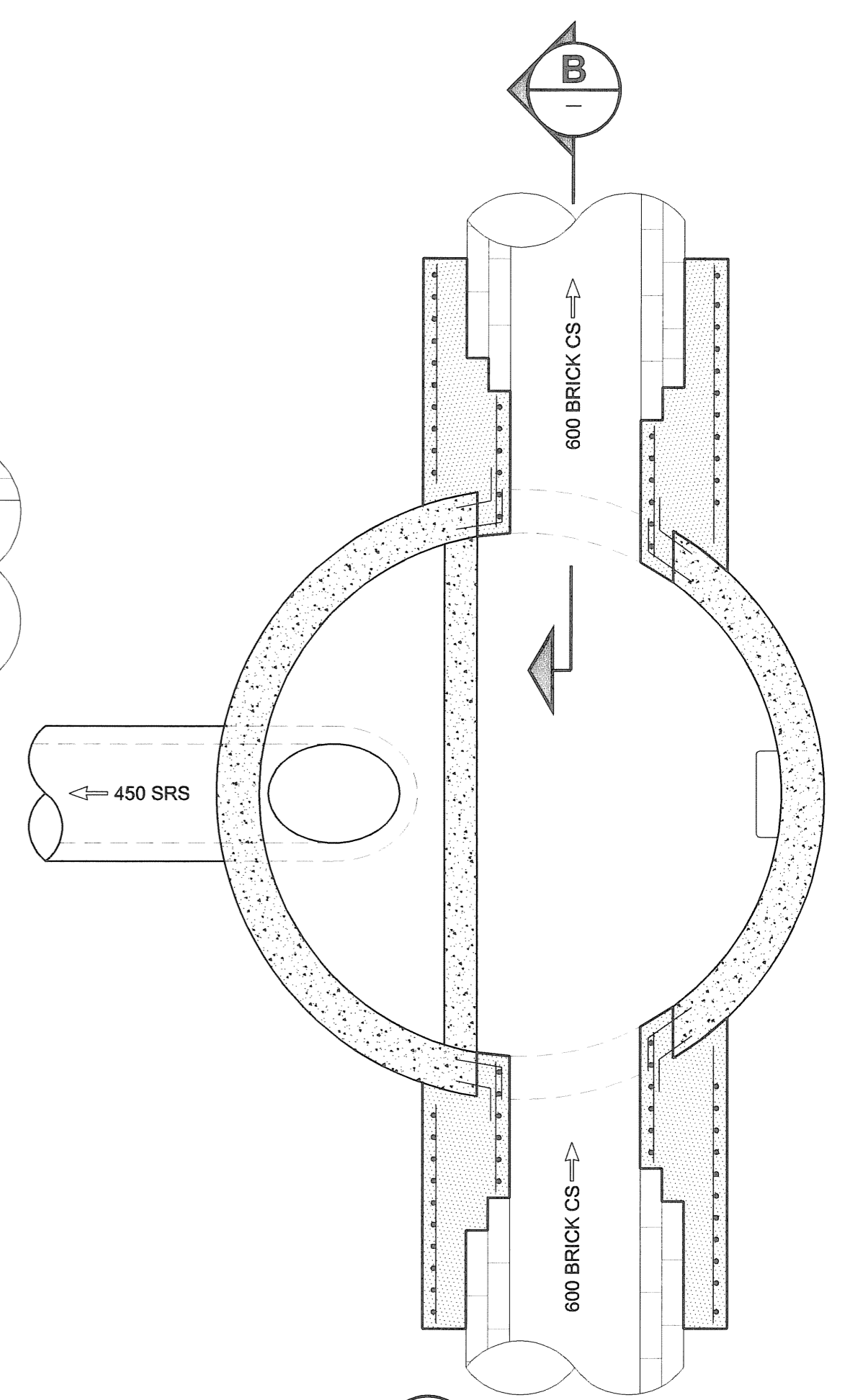
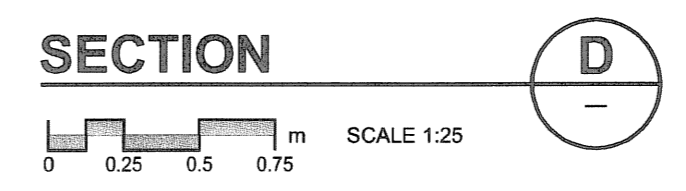
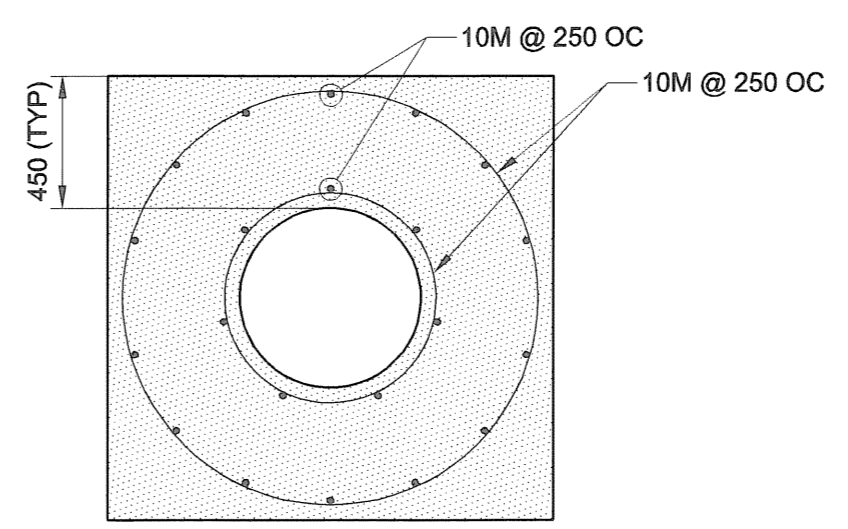
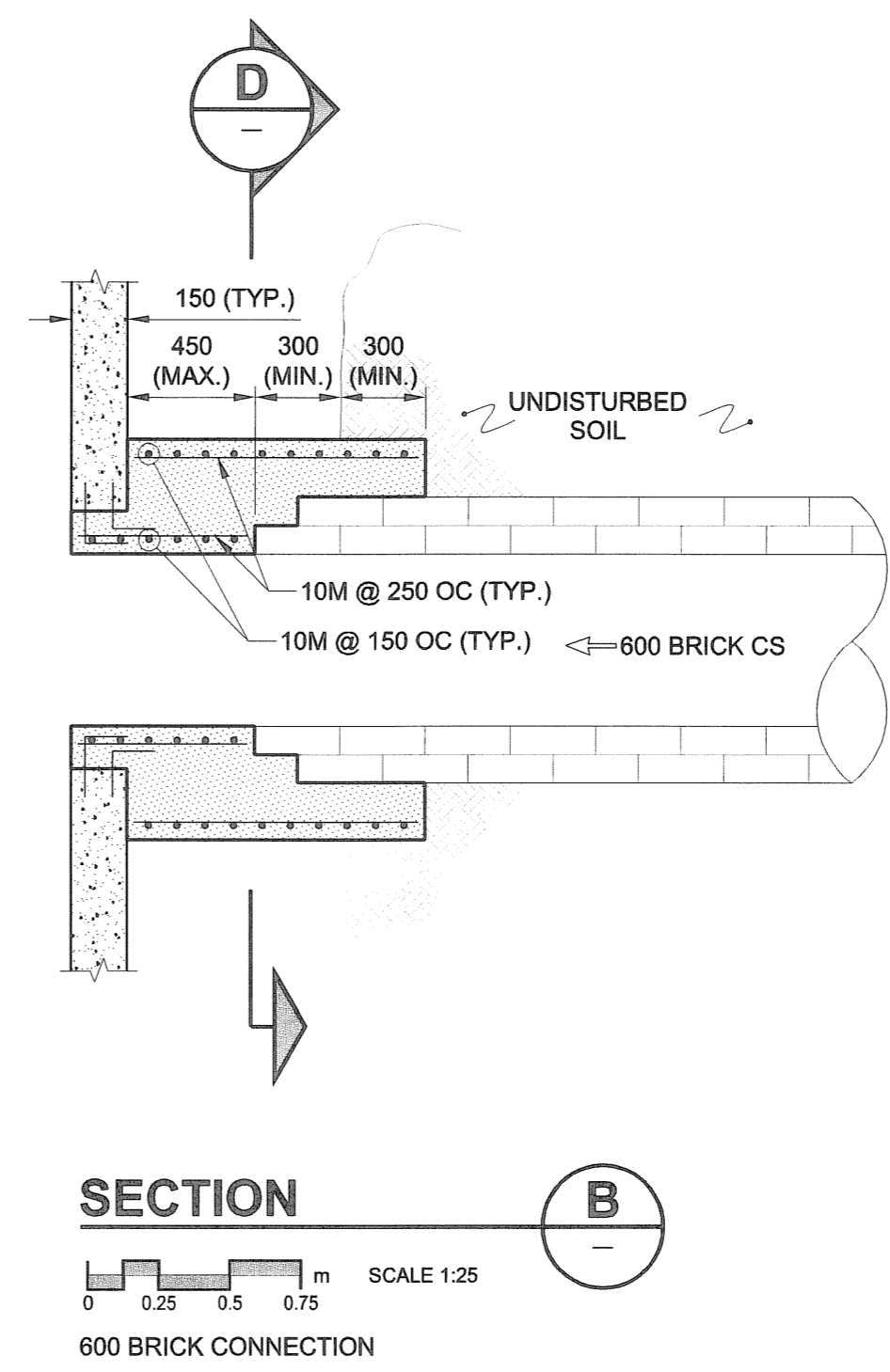
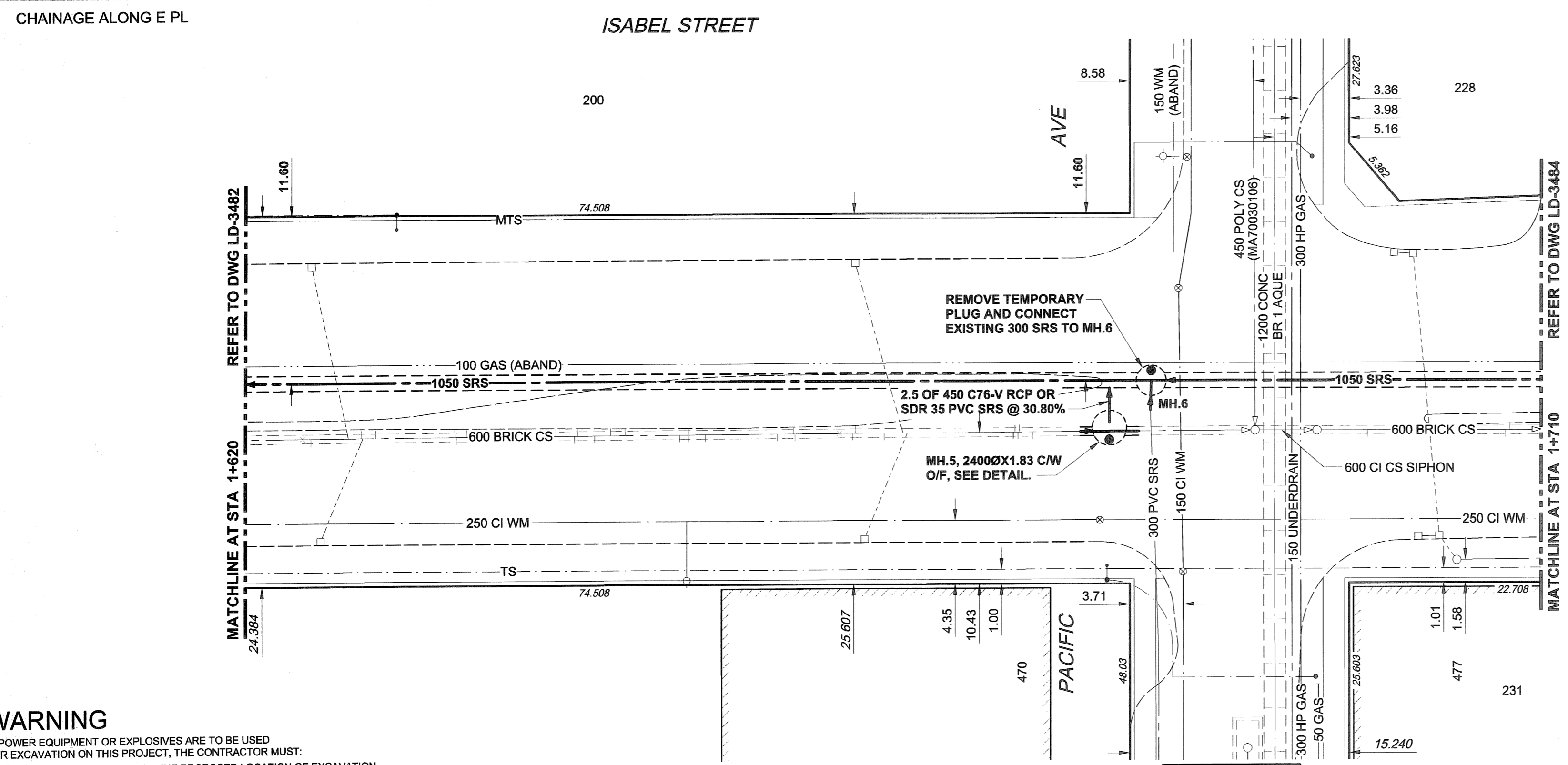
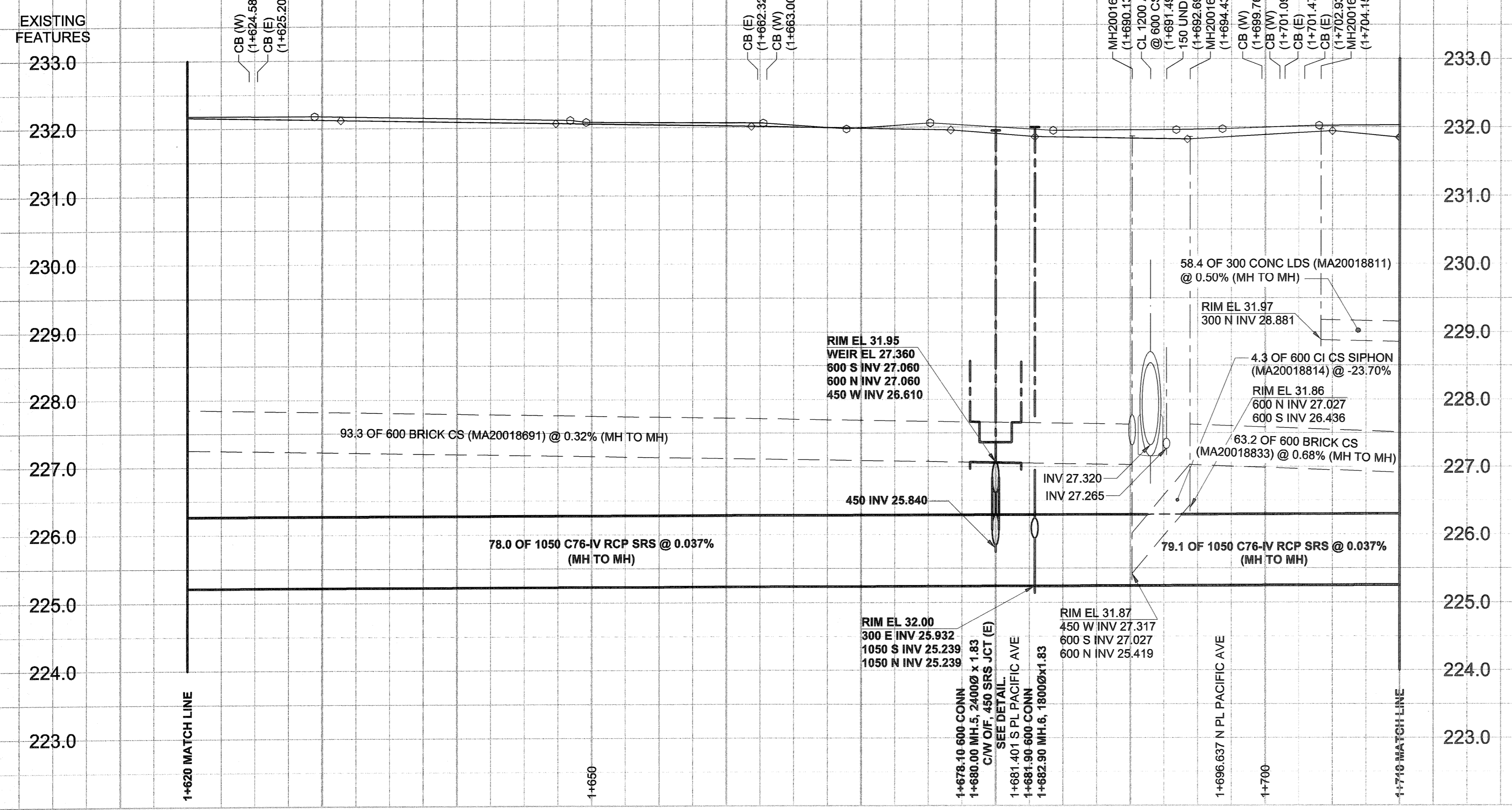


D SIZE 22" x 34" (559mm x 864mm)

PLOT: 07/04/10 3:33:10 PM

UMA FILE NAME: D265-177-03\_01-C-1003\_RX.dwg Saved By: lberard



- CONSTRUCTION NOTES:**
1. FOR DETAILED TEST HOLE INFORMATION, SEE SPECIFICATION.
  2. THE LOCATION OF ALL SERVICES IS TO BE CONFIRMED IN THE FIELD.
  3. INSTALL NEW SEWERS AND CATCHBASIN LEADS BY TRENCHLESS METHODS WHEREVER POSSIBLE.
  4. RENEW/REHABILITATE CATCHBASINS & RENEW CATCHBASIN LEADS WHERE NOTED.
  5. CONTACT THE WATER AND WASTE DEPARTMENT CONSTRUCTION SERVICES CO-ORDINATOR, ANDY VINCENT, AT 986-3823 A MINIMUM OF 7 DAYS PRIOR TO CROSSING OR WORKING ADJACENT TO AQUEDUCT TO ARRANGE FOR INSPECTION.

**WARNING**  
 IF POWER EQUIPMENT OR EXPLOSIVES ARE TO BE USED FOR EXCAVATION ON THIS PROJECT, THE CONTRACTOR MUST:  
 1) NOTIFY THE GAS COMPANY OF THE PROPOSED LOCATION OF EXCAVATION.  
 2) TAKE PRECAUTION TO AVOID DAMAGE TO GAS COMPANY INSTALLATIONS.  
 SEE PROVINCIAL REGULATION 140/92 FOR DETAILS

150 mm WM	WATERMAIN	150 mm WM	EXISTING	LEGEND - PLAN	NEW	150 mm WM	WATERMAIN	150 mm WM	EXISTING	LEGEND - PROFILE	NEW
	HYDRANT						LAND DRAINAGE SEWER				MANHOLE
	LAND DRAINAGE SEWER				CATCH BASIN		CURB INLET		CULVERT		PIPE ABANDONMENTS
	WASTE WATER SEWER		MANHOLE		CATCH BASIN		CURB INLET		CULVERT		SURVEY BAR
	CURB STOP REDUCER		COUPLING		ANODE		HYDRO		MTS		TESTHOLE
	COUPLING		ANODE		HYDRO		MTS		TESTHOLE		LAMP STANDARD
	MTS		GAS		TREE		PAVEMENT CROWN		N/W PROPERTY LINE		S/E PROPERTY LINE
	GAS		TREE		PAVEMENT CROWN		N/W PROPERTY LINE		S/E PROPERTY LINE		N/W GUTTER
	TREE		PAVEMENT CROWN		N/W PROPERTY LINE		S/E PROPERTY LINE		N/W GUTTER		S/E GUTTER

**LOCATION APPROVED UNDERGROUND STRUCTURES**  
 SUPR. U/G STRUCTURES COMMITTEE DATE  
 NOTE: LOCATION OF UNDERGROUND STRUCTURES AS SHOWN ARE BASED ON THE BEST INFORMATION AVAILABLE. BUT NO GUARANTEE IS GIVEN THAT ALL EXISTING UTILITIES ARE SHOWN OR THAT THE GIVEN LOCATIONS ARE EXACT. CONFIRMATION OF EXISTENCE AND EXACT LOCATION OF ALL SERVICES MUST BE OBTAINED FROM THE INDIVIDUAL UTILITIES BEFORE PROCEEDING WITH CONSTRUCTION.

NO.	REVISIONS	YY/MM/DD	BY
0	ISSUED FOR CONSTRUCTION	07/04/10	KMB

**METRIC**  
 WHOLE NUMBERS INDICATE MILLIMETRES  
 DECIMALIZED NUMBERS INDICATE METRES

UMA | AECOM  
 © 2005 UMA ENGINEERING LTD. ALL RIGHTS RESERVED.

DESIGNED BY: GEB/DME  
 CHECKED BY: [Signature]  
 DRAWN BY: KMB  
 APPROVED BY: [Signature]  
 HOR. SCALE: 1:250  
 VERT. SCALE: 1:50  
 DATE: 07/04/11  
 RELEASED FOR CONSTRUCTION: [Signature]  
 DATE: April 12/07

**APECM**  
 Certificate of Authorization  
 UMA Engineering Ltd.  
 No. 256 Expiry: April 30, 2007

PROFESSIONAL'S SEAL  
 PROVINCE OF MANITOBA  
 REGISTERED PROFESSIONAL ENGINEER  
 A. NAGY  
 April 11, 2007  
 CONSULTANT DRAWING NO. 03  
 D265-177-03

**THE CITY OF WINNIPEG**  
 WATER AND WASTE DEPARTMENT

**ALEXANDER/BANNATYNE**  
 COMBINED SEWER RELIEF  
 CONTRACT 3B

ISABEL STREET  
 63m NORTH OF ELGIN AVENUE  
 TO 20m SOUTH OF ALEXANDER AVENUE

SHEET 3 OF 11  
 CITY DRAWING NUMBER  
 LD-3483  
 REV 0

BID OPPORTUNITY NO. 167-2007