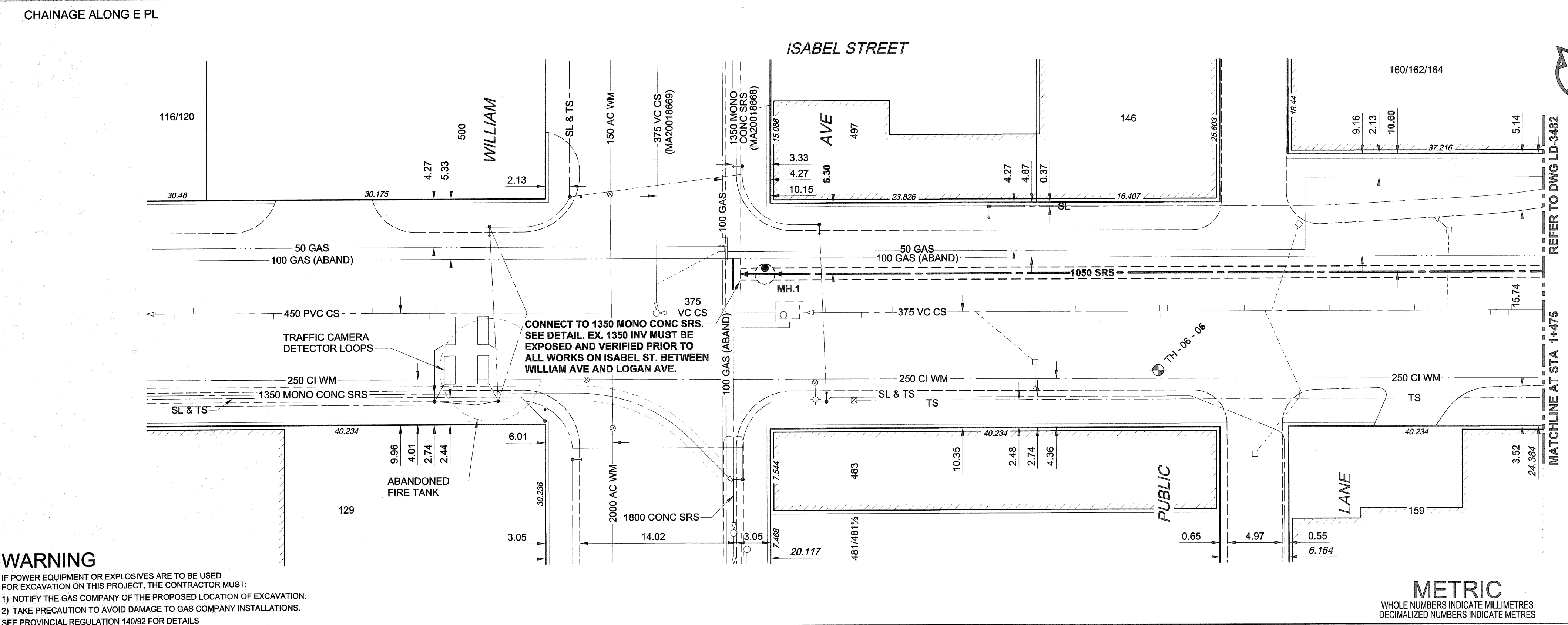
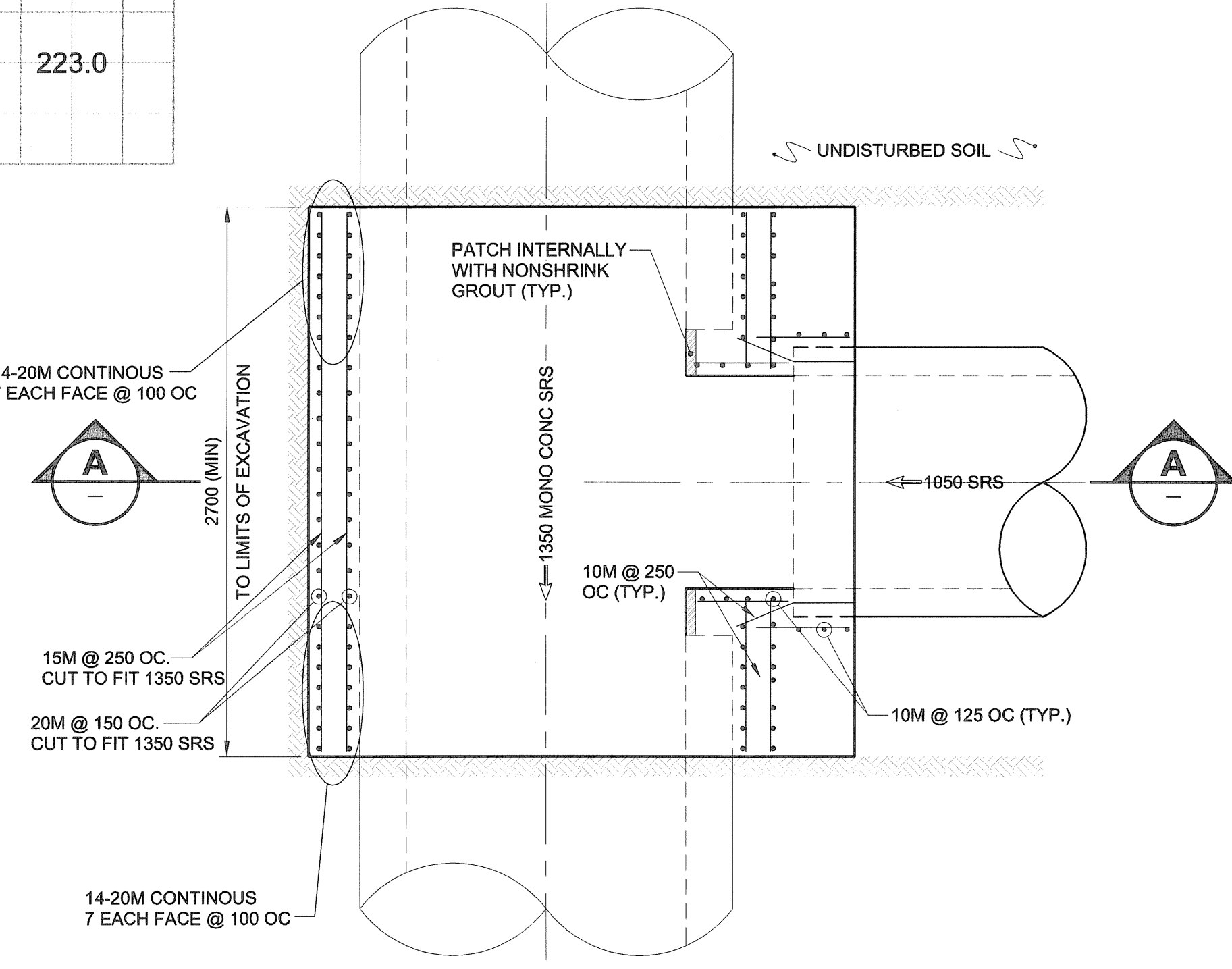
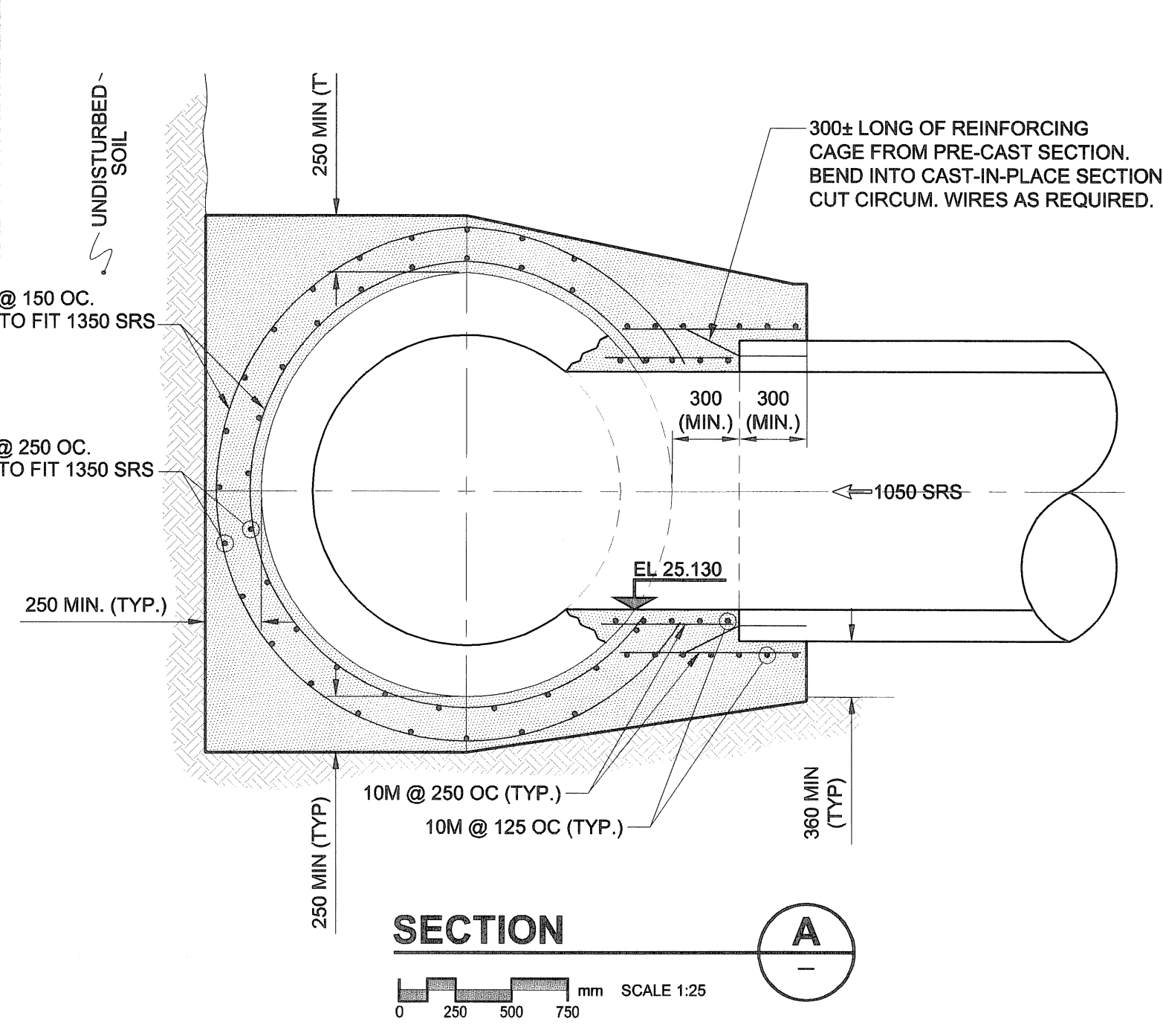
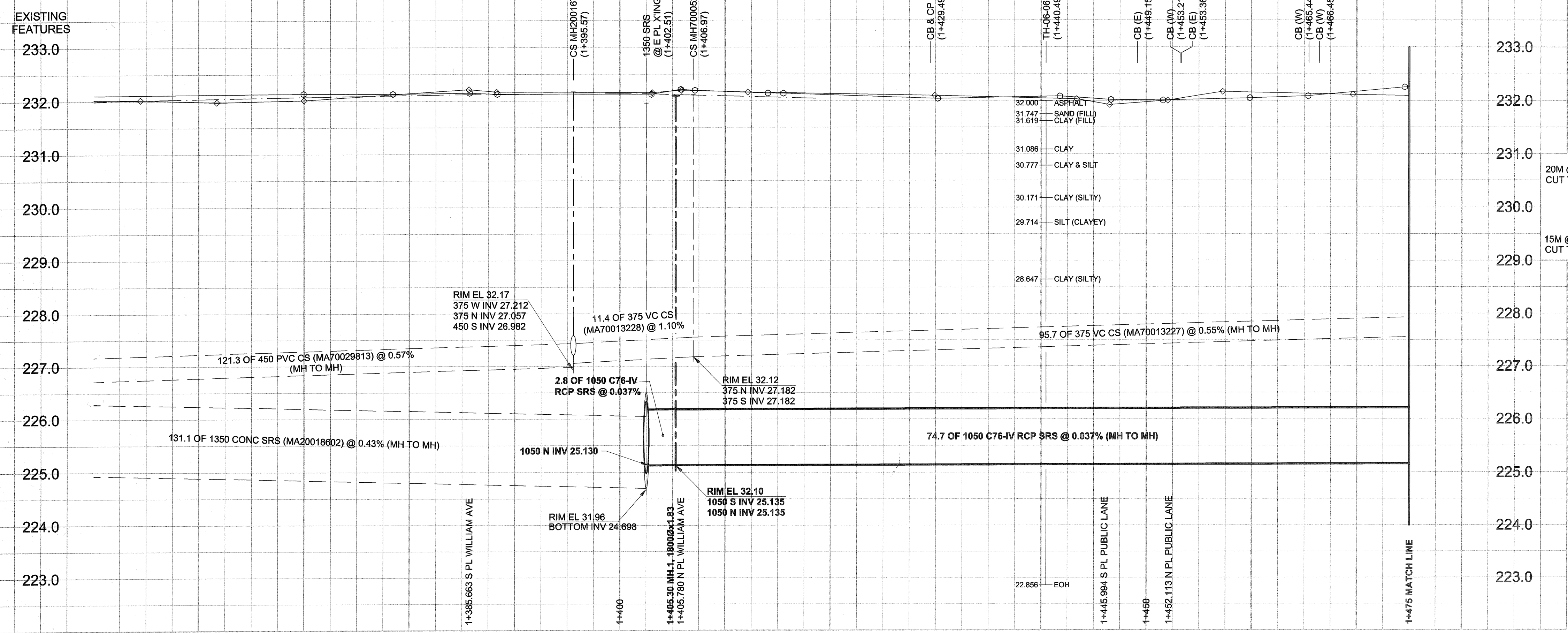


D SIZE 22" x 34" (559mm x 864mm)

PLOT: 07/04/10 9:22:09 AM

UMA FILE NAME: D265-177-03_01-C-1001_RX.dwg Saved By: lberand (H)



150 mm WM	WATERMAIN	150 mm WM	150 mm WM	WATERMAIN	150 mm WM	WATERMAIN	150 mm WM	WATERMAIN	
	HYDRANT		VALVE		COUPLING		ANODE		HYDRO
	LAND DRAINAGE SEWER		WASTE WATER SEWER		MANHOLE		CATCH BASIN		CURB INLET
	CULVERT		PIPE ABANDONMENTS		SURVEY BAR		EXISTING		LEGEND - PLAN
	NEW		EXISTING		LEGEND - PLAN		NEW		LEGEND - PROFILE

LOCATION APPROVED UNDERGROUND STRUCTURES

SUPR. U/G STRUCTURES DATE COMMITTEE

NOTE:
LOCATION OF UNDERGROUND STRUCTURES AS SHOWN ARE BASED ON THE BEST INFORMATION AVAILABLE. BUT NO GUARANTEE IS GIVEN THAT ALL EXISTING UTILITIES ARE SHOWN OR THAT THE GIVEN LOCATIONS ARE EXACT. CONFIRMATION OF EXISTENCE AND EXACT LOCATION OF ALL SERVICES MUST BE OBTAINED FROM THE INDIVIDUAL UTILITIES BEFORE PROCEEDING WITH CONSTRUCTION.

NO.	REVISIONS	DATE	BY
0	ISSUED FOR CONSTRUCTION	07/04/10	KMB

DESIGNED BY	CHECKED BY
GEB/DME	
DRAWN BY	APPROVED BY
KMB	
HOR. SCALE	VERT. SCALE
1:250	1:50
DATE	DATE
07/04/10	07/10/09

UMA AECOM

© 2005 UMA ENGINEERING LTD. ALL RIGHTS RESERVED.

PROFESSIONAL'S SEAL

PROVINCE OF MANITOBA

REGISTERED PROFESSIONAL ENGINEER

A. NAGY

April 11, 2007

CONSULTANT DRAWING NO. 01

D265-177-03

THE CITY OF WINNIPEG

Winnipeg

WATER AND WASTE DEPARTMENT

ALEXANDER/BANNATYNE COMBINED SEWER RELIEF CONTRACT 3B

ISABEL STREET
65m NORTH OF BANNATYNE AVENUE
TO 17m SOUTH OF ELGIN AVENUE

SHEET 1 OF 11

CITY DRAWING NUMBER

LD-3481

REV 0

BID OPPORTUNITY NO. 167-2007